

SOUTH BAY CRUISING CLUB



ELEVENTH YEAR

1961



SOUTH BAY CRUISING CLUB

An organization formed in 1951 to promote cruising under sail on Great South Bay and nearby waters.

OFFICERS

Commodore, Robert L. Paterson
Vice Commodore, John D. Beinert
Rear Commodore, Edmund W. Poor
Corresponding Secretary, Robert Pasch
Recording Secretary, Joseph Young
Treasurer, F. Richard Blue, Jr.
Fleet Captain, Stuart Baldwin
Fleet Surgeon, Dr. Theodore Hangarder
Chanteyman, Freeman Bloodgood

BOARD OF GOVERNORS

Merritt L. Smith	Newton E. Spiess
Julian T. Davies	Richard Boyd
Raymond Miligi	William H. Plauth
William S. Brayshaw	

COMMITTEE CHAIRMEN

Entertainment, Everitt Seidenberg
Handicap, Winslow Palmer
Cruising, Harry N. Klesick
Regatta, Merritt L. Smith
Measurement, Edmund W. Poor
Membership, Stuart Baldwin
Public Relations, John F. Young

YEARBOOK EDITORIAL BOARD

Robert Pasch, Gen Carl, Hervey G. Smith.
Special photographer: Sam Falk.

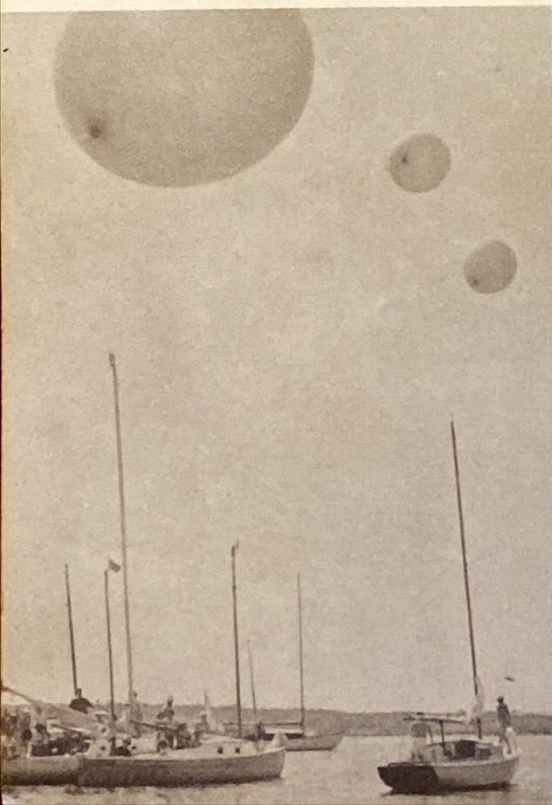
Member Club, Great South Bay Yacht Racing Association and
North American Yacht Racing Union.

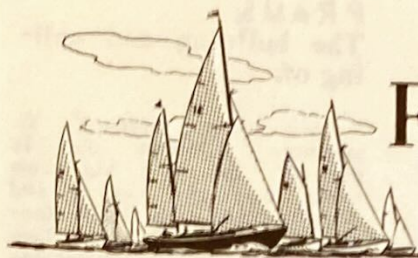


CHILDREN'S DAY

Whirpool Point, Sept. 10, Special: A firm beachhead was established on this almost uninhabited peninsula of Captree Island by the combined forces of S. B. C. C. and B. Y. C. Reminiscent of the Children's Crusades, initial landings were made by minors (see below).

One journalist counted 3,244 children but warns he might have counted some of the most active several times. Helium balloons established high point of the day. At left, Macklin Boetger blows them up. Mack furnished the helium, balloons, and enterprise.





From The Masthead

SOUTH BAY CRUISING CLUB



From the front cover to the last page, this eleventh edition of the SBCC Yearbook is dedicated to the joys of cruising under sail.

Before our racing fraternity breaks out the protest flag, please be sure we mean no disparagement of the sport. Racing is a vital Club activity. But a rabid racer (is there another kind?) needs as much encouragement as a mink in heat. It seems fair this year to put the focus of the Yearbook upon cruising.

In 1960, two of our annual cruises made the public print. The Sunday Times of July 24 carried a picture story by Charlie Palmer and Sam Falk, whose fine photography is the prime ingredient of this yearbook. The September issue of Yachting carried an article on an earlier cruise, written by your Yearbook editor, but saved by Dave Henderson's great pictures.

Sunday Times of July 24 carried a picture story by Charlie Palmer and Sam Falk, whose fine photography is the prime ingredient of this yearbook. The September issue of Yachting carried an article on an earlier cruise, written by your Yearbook editor, but saved by Dave Henderson's great pictures.

But you don't go cruising to make news; more often, you go to get away from it. In the Times, Charlie Palmer called it "Togetherness Afloat." At the risk of infringing on a few copyright laws, let's steal some more of Charlie's words:

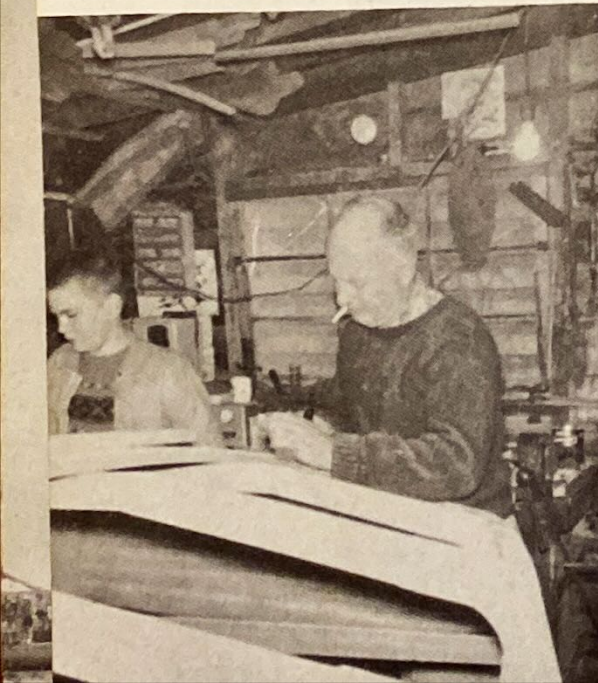
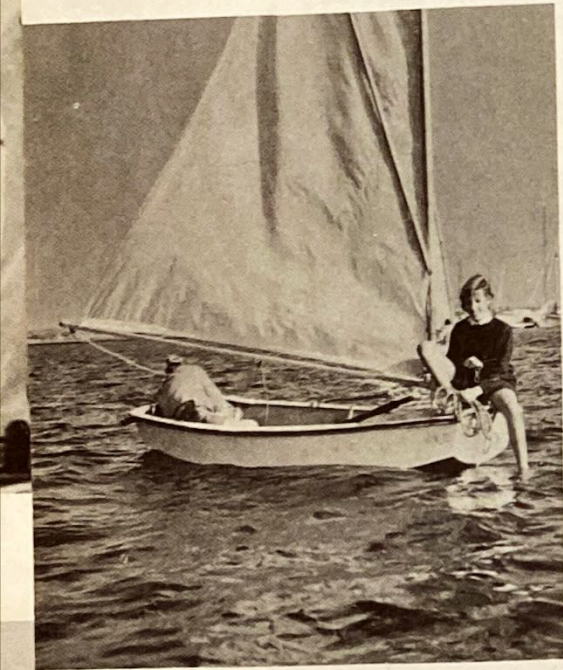
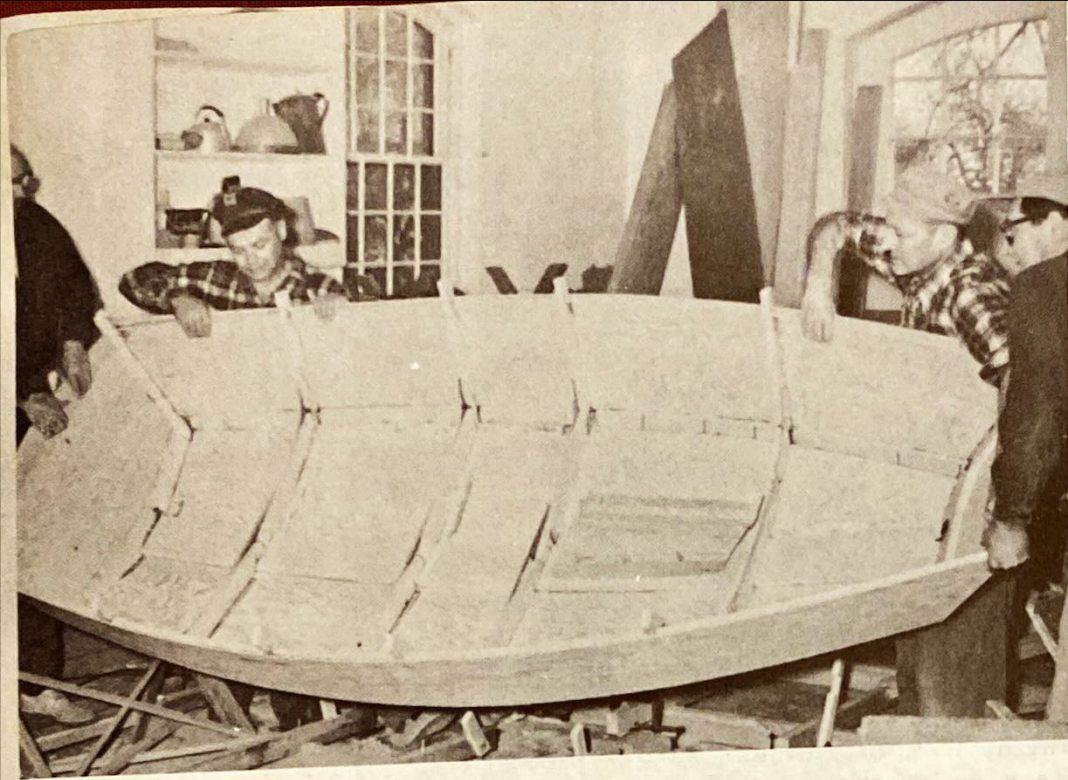
"The South Bay Cruising Club was founded on Long Island just ten (now eleven) years ago with four members and four boats. Today, it has more than 250 members and 150 boats. It has week-end rendezvous and races all summer, but the highlight is the week-long annual cruise, in which informality and relaxation are the keynotes -- sailing together during the day, "rafting up" side by side for evening drinks, pick-up races, beach parties, swimming and fishing."

How about it? Anyone for cruising?

PRAMS:
The building and sailing of.

Each year, more C. C. members blossom out in prams. In 1960, big pram event was the mother and daughter race at Fall Rendezvous, Cedar Beach. Two of the several casualties are recorded in photos at left. That's Leslie Pasch waiting casually on deck for a towline while Fran, in high gudgeon, tries to repair broken pintel. Other photo shows Maureen Boetger who won special Julian Davies award for running aground before the start.

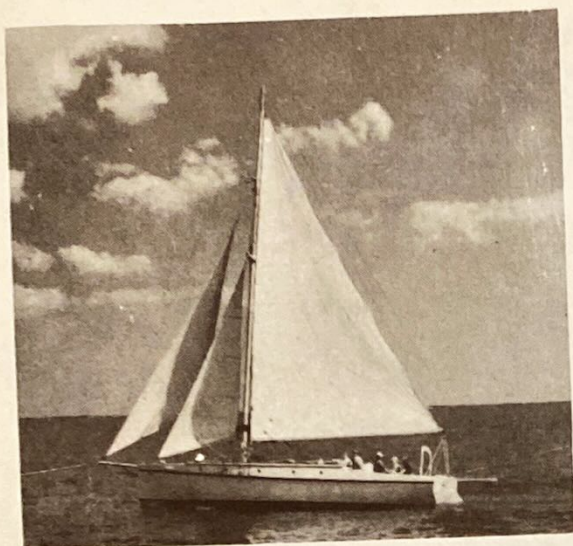
Two pram-building projects will populate Bay this summer. Commodore Paterson and V. C. Beinert organized one project that turned out boats. Meanwhile, in Fred Becker's barn, he, Bill Peck, and Bob Carl built Chick class prams, fast-footing twelve-footers with gunner rig.



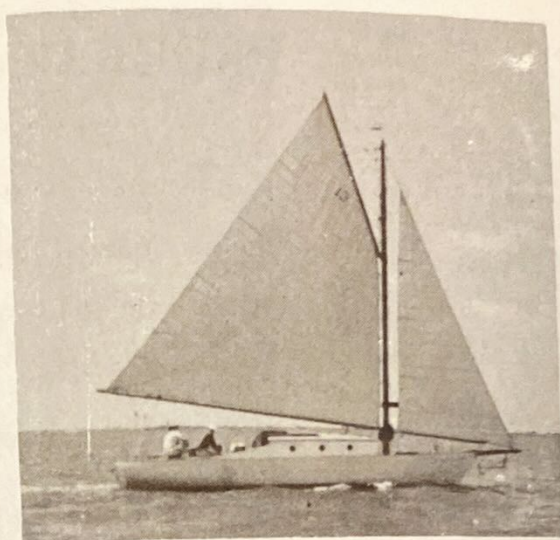
PROGRAM FOR 1961

March 11	Annual Dinner Dance	Southward Ho Country Club
May 13	Spring Cocktail Party	Bay Shore Yacht Club
May 30	Commissioning Day	Babylon Yacht Club
June 9	Opening Meeting	LaGrange Hotel
June 17	Bay Shore Invitation Regatta	Bay Shore Yacht Club
July 1	Babylon Invitation Race	Babylon Yacht Club
July 9	Ladies' Day Race	Long Island Yacht Club
July 15 to July 22	Ninth Annual S. B. C. C. Cruise	
July 29	West Island Race	Nicoll Bay -- West Island
July 31 to Aug. 5	GSBYRA Race Week	Babylon to Westhampton
August 19	Smith Trophy Race	Sayville
August 26	Foulke Trophy Race (Night Race)	Babylon -- Bellport
Sept. 2 to Sept. 4	SBCC Labor Day Children's Cruise, and Commodore's Cup Race	Nicoll Bay to Bellport
Sept. 9	Children's Day	
Sept. 23	Clam Bake and Single-Handed Creepstakes	
Oct. 14	Fall Cruise	
Nov. 11	Fall Cocktail Party and Trophy Presentation	





NO. 33 RANGER



NO. 13 FALCON



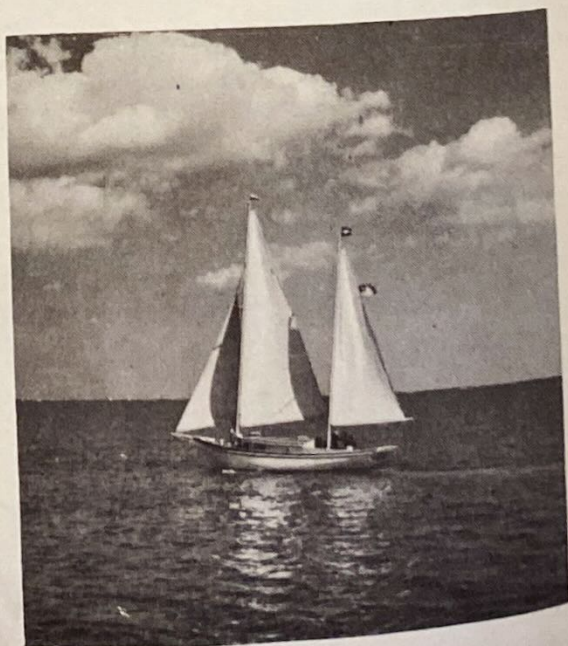
NO. 41 NANCEE



NO. 14 SEAFARER



NO. 29 LIVELY LADY II



NO. 18 MORNING STAR

RACING INFORMATION

The S. B. C. C. handicap consists of a time allowance based on a yacht's measurements as taken by the Off Soundings Club rule of 1960. This rule is comprised of 30 percent of the measurement handicap plus 70 percent of the usual performance factor. The skipper's performance in his last 10 races will determine the performance, or experience, factor. If the skipper has sailed fewer than 10 races, the performance factor will be proportioned accordingly. The Handicap Committee will throw out obvious cases of grounding, severe rigging failure, and other cases which are not typical of normal racing conditions.

The fleet of active racing boats is divided into thirds, based on the size of the time allowance. These thirds are designated classes A, B, and C. Class X will race again this year under a measurement rule handicap alone, without the performance factor which applies to the rest of the fleet.

Skippers not having a class assignment in the Fleet Roster will receive a temporary one from the Committee Boat the first time they race. After performance can be determined by sailing several races, they will be given a permanent class.

As in the past, all races will be sailed under North American Yacht Racing Union rules (with the exception of the regulations which ban burgees and flags and restrict number in crew) these rules provide that a yacht's time will be taken when any part of her hull crosses a finish line.

Starting guns will be fired at five minute intervals, and the start will consist of WARNING Gun; PREPARATORY Gun; STARTING Gun Class C, followed by Class B, Class A, Class X.

Recall and other signals will be flown from the Committee Boat and will consist of two guns, followed by:

Signal flag "N" (blue and white checkered flag) -- race called off.

Signal flag "S" (white flag, blue square) -- course shortened, finish here.

Signal flag "P" (blue flag, white square) -- start postponed. Warning gun will be fired 30 seconds after this signal is lowered. Postponements will be for periods of 15 minutes.

Information on GSBYRA Regatta Week will be contained in their Yearbook.

COURSES

BAY SHORE INVITATION: WARNING Gun -- 1300. Start established by Committee Boat off Lawrence Creek; to Nun No. 6, East of Captree Bridge; to Red Flashing No. 4, off Nicoll Point; return to finish line, leaving Flashing No. 1, off Bayberry Point, Islip, to starboard. Leave all other marks to Port.

LADIES' DAY RACE: Time and course to be announced.

BABYLON INVITATION: WARNING Gun -- 1300. Start established by Committee Boat off the Babylon Yacht Club; through the center span of Captree Bridge to Flashing Red No. 2, South of Champlin Creek, Islip, leaving Nun No. 6 and Flashing Red No. 10 to Starboard; to Black and White S-L Flasher off Great Cove, Bay Shore; return to finish through the center span of the Bridge. Leave all marks to Port.

WEST ISLAND RACE: WARNING Gun -- 1300. Start established by Committee Boat in Nicoll Bay; passing around Red Flashing No. 10 off Bay Shore; Red-Black Quick Flash off Saltaire (keeping North of Flashing Red No. 8, regardless

of which direction course is sailed); Flashing Green No. 15 off Point O'Woods; return to finish line established by Committee Boat in Nicoll Bay. All marks left to Port. Course may be sailed in the opposite direction, will all marks left to Starboard.

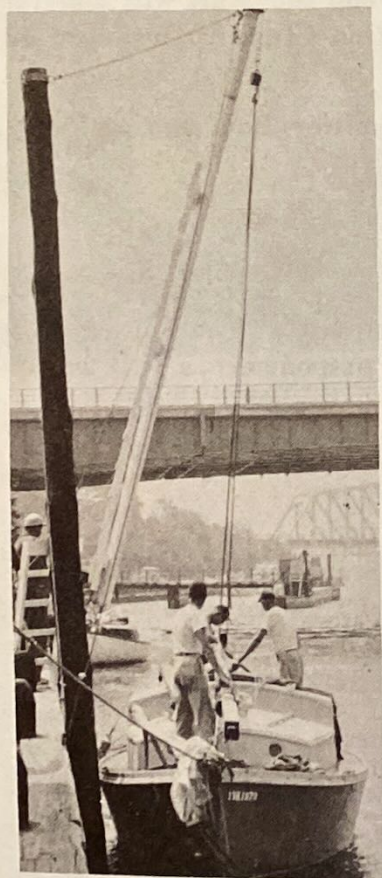
FOULKE TROPHY RACE: WARNING Gun -- 1800. Start established by Committee Boat in proximity of Flashing No. 7 in mid-Bay off Babylon Cove; through center span of Captree Bridge; keeping North of Flashing Red No. 32 off Patchogue Bay; round Flashing Green No. 1 off Howells Point to Port; returning up the Bay, keeping North of Flashing Red No. 32, through center span of Captree Bridge to finish off Babylon Yacht Club. Proper running lights must be observed.

SMITH TROPHY RACE: WARNING Gun -- 1400. Start established by Committee Boat off Sayville; to Flashing Red No. 18 off Point O'Woods; to Flashing Green RB No. 1 off Patchogue Bay; return to finish; leaving all marks to Port.

COMMODORE'S CUP RACE: WARNING Gun -- 1300. Start established by Committee Boat in Nicoll Bay; to Flashing Red No. 4 off Nicoll's Point leaving it to Port; to a finish line established by the Committee Boat in the vicinity of Howells Point.

SINGLE-HANDED CREEPSTAKES: Start and course to be announced.

GSBYRA RACE WEEK: Courses for Cruising Class Races will be in Race Week program.



CRUSING INFORMATION

Again this year, three cruises have been designated as "official" SBCC events. Skippers who participate in all three cruises will be awarded a special medalion for mounting on his craft. The "official" cruises are the Tenth Annual Cruise, the GSBYRA Regatta Week, and the Labor Day Weekend in Bellport Bay.

There will be three varieties of the Annual Cruise. One group of boats will spend the week in and around Peconic Bay. A second group will go through the canal with the first group, but will go on to explore the Connecticut shore line. The third fleet will sail out Shinnecock Inlet to Block Island and beyond. Again this year, children are invited on the Annual Cruise.

All skippers who wish to enter the Club's cruising competition will be required to keep a log on their cruise from Commissioning Day through the Fall Cruise. Awards will be made on the basis of the extend of each skipper's cruising activities.



NO. 4 REVERIE



NO. 149 TALARIA



NO. 48 AMBERJACK



NO. 109 DIANA



NO. 68 MANX



NO. 63 SASSENACH

S. B. C. C. FLEET

NO.	NAME	OWNER	RIG	LOA	DRAFT	DESIGNER
1						
2	Starbright	Brayshaw	Ktch	28	3½	Herreshoff
3	Maumac	Boettger	Ywl	36	3½	Mower
4	Reverie	Young	Ywl	40½	4	Cox & Stevens
5	Cricket	Spear	Ywl	40		
6	Independence	Hard	Schr	50	6¾	A. Mason
7	Katinka Sr.	Smith	Ywl	35	3½	Lawley
8	Gardaloo	S. Baldwin	Ketch	36	2½	Crocker
9	Golden Eagle	Post	Schr	33	3	Smith
10	Teezim	Zimmerman	Cat	24	2½	Schwartz
11	West Indian	Cain	Ktch	28	3½	Herreshoff
12	White Cap	Carl	Slp	32	2½	Mower
13	Falcon	Wyckoff	Slp	36½	¾	Wicks
14	Seafarer	Henderson	Slp	26	3½	
15	Chantey	Baldwin	Slp	30	¾	Stephens
16	Whisper	Brooks	Slp	32	3	Hack
17	Tradewinds	Thall	Ktch	32	3	Munroe
18	Morning Star	Smith	Ktch	33	3	Smith
19	Sea Witch	Tilden	Slp	25	4	Dill
20	Judy	Hansen	Slp	26	2½	Crosby
21	Chico	Braddon	Slp	26	3	Crosby
22	Bear	Becker	Cat	24	2	Crosby
23	Manana II	Holwell	Slp	22	1½	Delorie
24	Mehitabel	Bloodgood	Cat	16	1½	
25	My Fair Lady	Davis	Ywl	24	3	N. E. Marine
26	Lore	Conchal	Ktch	28	3½	Herreshoff
27	Finnisterre	Bennett	Slp	23½	3½	C. McGregor
28	Blue Jacket	Blue	Slp	26	2	White
29	Lively Lady II	Dupree	Slp	23	3	Crocker
30	C'est la Vie	Baxter	Slp	22¾	¾	Schneider
31	Stardust	Klesick	Ketch	28	2	Van Dyke
32	Danza	Loomie	Slp	23½	2½	Carlson
33	Ranger	Plauth	Ctr	34½	4	Atkin
34	Semiramis	deMurias	Slp	26	¾	Bergwall
35	Bay Bee	Wragge	Slp	24	2	N. E. Marine
36	Circe	Greene	Slp	36	3 5/6	Herreshoff
37	Lotus	Jennings	Slp	38	2½	
38	Refrain	Berdolt	Slp	23½	4	Farrell
39	Vixen	Block	Slp	24	2	
40	Shrimp	Faas	Cat	23	2½	Crosby
41	Nancee	Bradt	Slp	26	2	Meyer
42	Snark	Wanser	Slp	26	¾	Eldredge-McInnis
43	Spicy Isles	Hamlin	Slp	23	1½	Hamlin
44	Cygnat	Swan	Slp	26	¾	
45	Windward	Sprague	Slp	24½	¼	Sweisguth
46		Johnson	Slp	20	2½	Bredoinaks

S. B. C. C. FLEET

NO.	NAME	OWNER	RIG	LOA	DRAFT	DESIGNER
47	Portia Too	Jones	Slp	21	2	Crosby
48	Amberjack	Grimes	Slp	24	2	Sprague
49	Sparkling Waters	Pasch	Slp	31	2½	Brockway
50	Compromise	Underhill	Slp	29	3¼	Alden
51	Dervish	Koubek	Slp	23½	2½	(C. C. Senior slp)
52	Halcyon	Davis	Slp	21	2	Wm. Crosby
53	Lady Lou V	Beinert	Cat	22	2½	Sweisguth
54	Cutty Sark	Norton	Ktch	36	3½	Mower
55	Eos	Stickley	Slp	23	2	Dickerson
56	Scamp	S. Paterson	Slp	30	2½	Wicks
57	Tondelayo	Braddon	Cat	26	3	Crosby
58	Snookie	Kent	Slp	25	2	Ketcham
59	Sun-Glo	B. Garben	Slp	23	1½	True
60	Marion K-II	Bernichon	Slp	32	¾	Alden
61	Cataumet	Howell	Cat	22½	2½	Crosby
62	Lively Lady	Moore	Slp	23½	4	Farrell
63	Sassenach	Held	Ktch	33½	2½	Dickerson
64	Hippo	Young	Cat	17	2	Crosby
65	Rete	Gorman	Slp	22	1¾	J. White
66	Harpoon	Wissmann	Ctr	26	3	Wissmann
67	Wooden World II	Streit	Ketch	36	3½	Crocker
68	Manx	Herzeca	Cat	22	¼	Sweisguth
69	Gallant	Hildreth	Ketch	22	2½	Dickerson
70	Lorelei	Lawrence	Slp	32	3	Crosby
71	Roman Holiday	Moran	Slp	30	3	Van de Stadt
72	Southern Cross	Macy	Slp	34	3½	Mower Interclub
73	Naiad	Gauch	Cat	26	2½	Crosby
74	Moonshine	Hayward	Slp	22	3½	Herrschoff
75	Wooden World	Eberle	Schr	32	2½	
76	Trollop II	Ricketts	Cat	18	2	Crosby
77	Chispa	R. Garben	Slp	15		
78						
79	Syren III	Worden	Ywl	26	3	Wetherall
80	Gull	Picken	Ktch	36½	4	Winslow
81	Pipsqueak	Davison				
82	Caprice	Jack	Slp	21	2½	Crosby
83	Flomared	Henkel	Slp	18	1½	Cape Cod
84	Extra Dry	Davies	Slp	24	3½	Davies
85	Rahnee	Fuller	Ywl	39	3	
86	Minx	Berkowitz	Slp	22	2	C. and W.
87	Betty	Ketcham	Slp	18	2½	Ketcham
88	Allegro	Nutzhorn	Slp	23	2	Cox & Stevens
89	Spindrift	Stechert	Slp	25	¾	Van de Stadt
90	Nereid	Kraker	Cat	22	2½	Crosby
91	Blue Dolphin	Ronald	Slp	32	3	Islip One-Design

S. B. C. C. FLEET

NO.	NAME	OWNER	RIG	LOA	DRAFT	DESIGNER
92	Madcap II	Roberts	Slp	25	4	N. E. Marine
93	Whimsey	Wimmerstedt	Slp	28	3	
94	Jeanne	Hangarter	Slp	18	1 $\frac{3}{4}$	Herbulot
95	Mallard	Palmer	Slp	25	2 $\frac{1}{2}$	Hamlin
96	Nancy III	Peterson	Slp	24	2 $\frac{1}{2}$	N.E. Marine
97	Good Girl	Hayward	Slp	31	4	
98	Grayling	Ince	Cat	22	2	Andersoson
99	Tranquil	Bernichon	Slp	34	2	
100	Sacre Bleu	Ellner	Slp	18		
101	Cadenza	Livingston	Slp	23 $\frac{1}{2}$	2 $\frac{1}{2}$	Farrell
102	Renee	Nepo				
103	Tattoo	Hyde	Ctr	30		
104	Rubato III	Schnell	Slp	28	5	Stephansen
105	Blue Teal	Picoli	Slp	23 $\frac{1}{2}$	2 $\frac{1}{2}$	Farrell
106	Brandy	R. Paterson	Ktch	27	3	Royal Navy
107	Quiet Tune	Grauer	Cat	18 $\frac{3}{4}$	2	Wittholz
108	Katydid	Prince	Slp	26	2 $\frac{1}{2}$	Hamlin
109	Diana	Spieß	Slp	27 $\frac{3}{4}$	3 $\frac{1}{4}$	McGregor
110	Sandblower	Berger	Ktch	28	3 $\frac{1}{2}$	Herreshoff
111	Trade Winds	Purcell	Slp	22		
112	Querida	Cameron	Slp	33	2 $\frac{1}{2}$	
113	Ruth	Gottwald	Slp	30	2 $\frac{1}{2}$	Wrieole
114	Sea Rover	Hanaway	Cat	26	2 $\frac{1}{2}$	
115	Southwind	Sparling				
116	Vim	Ciocys	Slp	19 $\frac{3}{4}$	3 $\frac{2}{3}$	
117	Sumaka III	Eggerstedt	Slp	26	2 $\frac{1}{2}$	Hamlin
118	Mijo II	Wornock	Slp	23 $\frac{1}{2}$	4	Farrel
119		Palmer	Slp	19	2 $\frac{1}{2}$	Wingerath & Smith
120	Lorna Dorne	Thorne	Slp	33	3	Sparkman & Stephens
121	Marita	Shoemaker	Slp	23 $\frac{1}{2}$	4	Farrell
122	Chance	Merry	Ktch	26	2 $\frac{1}{2}$	Monomoy Whaler
123	Vivace	Parker	Slp	19 $\frac{1}{2}$	1 $\frac{1}{2}$	Sparkman & Stephens
124	Pools	Schwindt	Slp	28	3 $\frac{1}{2}$	
125	Vi	Yaxis		28	3 $\frac{1}{2}$	Herreshoff
126	Mareca	Whittaker		34	4	
127	Hornpipe	O'Reilly	Schr	32	3 $\frac{1}{2}$	
128	Knot	Miles	Slp	21	1 $\frac{1}{2}$	Mower
129	Three Sisters	Pallas	Cat	21	1 $\frac{1}{2}$	Smith
130	Windblown	Jonas	Ketch	35	3 $\frac{1}{2}$	Dickerson
131	Uni	Rague	Slp	24	3 $\frac{1}{2}$	Lindros
132	Polaris	Vogel	Slp	20	2 $\frac{1}{2}$	Adriatic
133	Blue Peter	Dunckelmann	Slp	23 $\frac{1}{2}$	4	Farrell
134	G-String	Horn	Cat	17	2	
135	Errant	Seidenberg	Slp	26	2	Meyer
136	Ramper	Pullis	Slp	21	2	William Crosby
137	Oriana	Miligi	Yawl	32	31/3	Hunt
138	Edput III	B. Max	Sch	36		

S. B. C. C. FLEET

NO.	NAME	OWNER	RIG	LOA	DRAFT	DESIGNER
139	Aeolus	Haberman	Slp	24		A. R. True
140	Irish Mist	Lyons	Slp	23	1½	True
141	Quest	Bernichon	Slp	23	2½	Cox & Stevens
142	Nor Easter	Boyd	Yawl	34	3½	Mower
143	Prancer	Hamlin	Slp	23	2¾	Mace Eaton
144	Hispaniola	Poor	Sch	37¼	3½	Alden
145	Syren	Levy	Cat Ktch	33½	1	Chapelle
146	Gypsy	Eccleston	Slp	18	1½	
147	Yankee Belle	Getler				
148	Valkyrie	Farrel	Slp	29½	3½	Garden
149	Talaria	Logan	Ktch	28	3	Adams
150	Viking	Spollen	Slp	26	3½	J. Bloess
151	Dutchess	Stamper	Slp	24	22/3	Sweisguth
152	Spindrift	Ramsdell	Slp	23½	2½	Farrell
153	Comet	Dauch	Slp			Comet
154	Fun	Love	Slp	23	2	Ketcham
155	Escape	Palmer				
156	Polymer	Rosenberg	Ktch	32	3	Graves
157	No. 2088	Patch	Slp	19½	1½	Sparkman & Stephens
158	Leander	Martin	Slp	23	1½	A. R. True
159	Vagabond	Luke	Ktch	30	4	Hanna
160		Morris	Catamaran	27	1	Herreshoff
161	Uninvited	Poe	Cat	21	2	Gil Smith
162	Lolly Pop	McCarthy	Slp	28	3½	
163		Morris	Trimaran	24	1	
164	Quartet	Collins	Slp	28	4	Schneider
165	Amphibicon	Saltzman	Slp	25½	2½	Hamlin
166	Dutch Maio	Colleran	Slp	30	4¼	Jachtwerf
167	Renee N	Nepo	Ktch	30	3	Monomoy
168	Neptune	Tegins	Slp	26	3½	
169	Blue Horizons	Beberian	Slp	20	4	Wittholz
170		Frankenfield	Slp	17	4½	Sailstar
171		Flynn	Ctr	30½	3½	Wittholz
172	Fortune Bay	Whitney	Slp	23	3½	Rhodes
173	Merry Ann	Cook	Slp	19	2	Tyler
174	Noche Buena	Symons	Ktch	26	3½	Chapelle
242	Falcon	Heckel	Slp	28½	3½	Al Berg



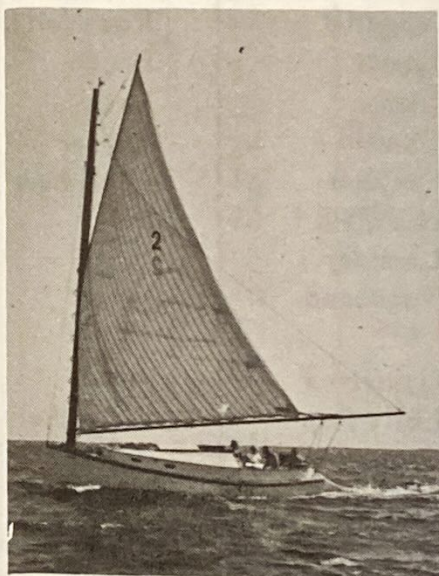
NO. 53 LADY LOU V



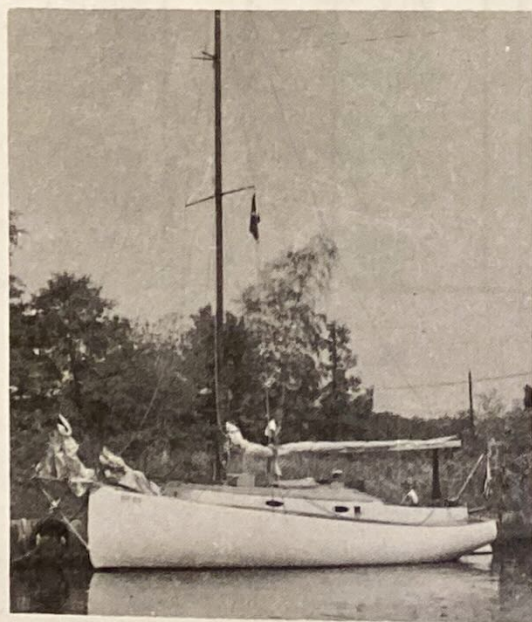
NO. 16 PERIWINKLE



NO. 45 WINDWARD



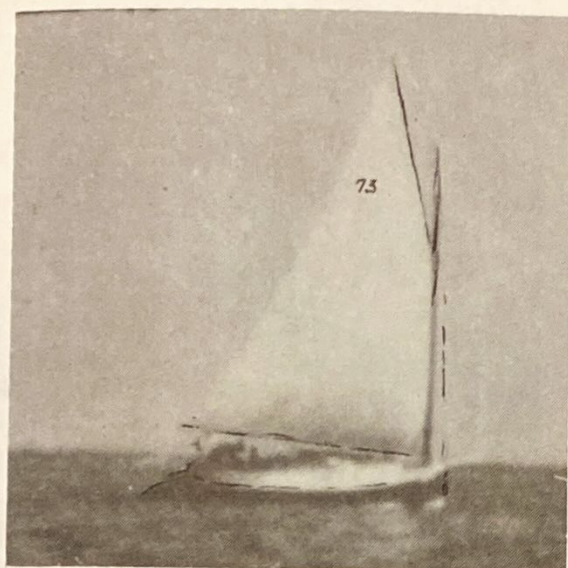
NO. 57 TONDELAYO



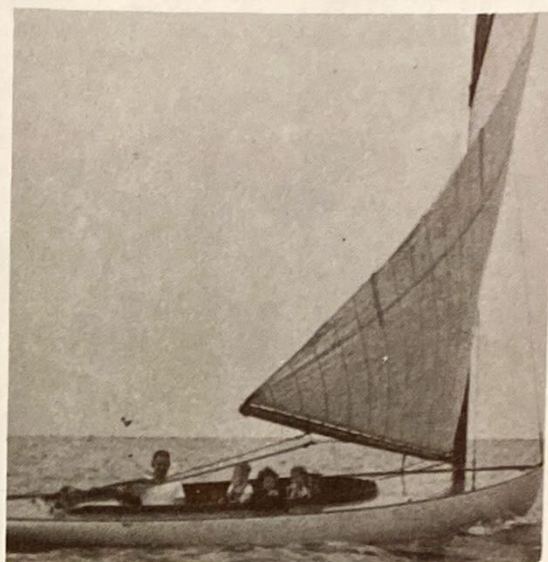
NO. 21 CHICO



NO. 106 BRANDY



NO. 73 NAIAD



NO. 129 THREE SISTERS



NO. 96 NANCY III



NO. 49 SPARKLING WATERS



NO. 89 SPINDRIFT



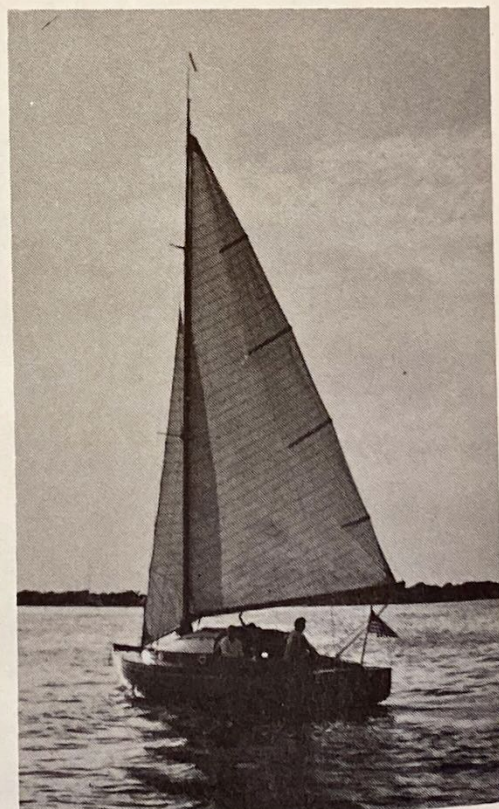
NO. 66 HARPOON



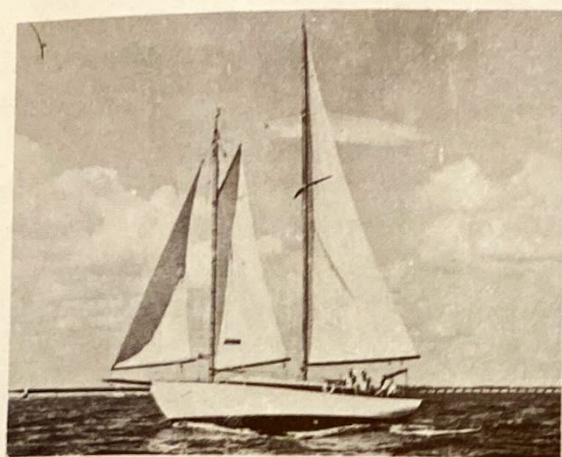
NO. 151 DUTCHESS



NO. 135 ERRANT



NO. 113 RUTH



NO. 144 HISPANIOLA



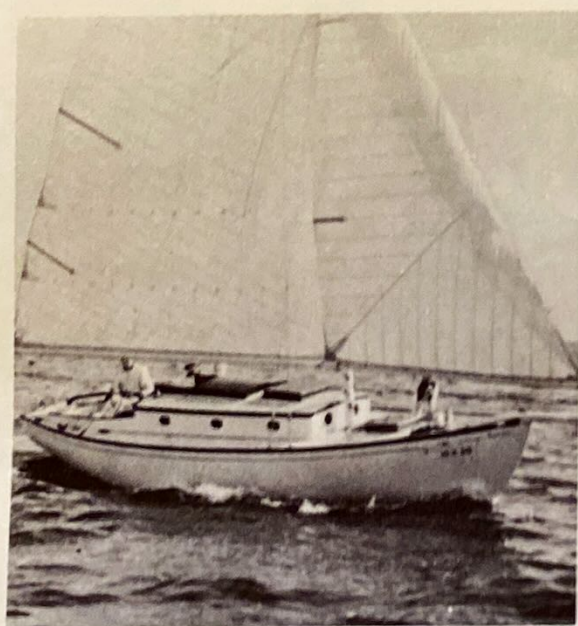
NO. 108 KATYDID



NO. 136 RAMPER



NO. 114 SEAROVER



NO. 42 SHARK



NO. 128 KNOT



S.B.C.C. CRUISE

Young in foreground, includes (from left to right) Carol Peck (we think), Eliza Paterson, Judy Peck, Laird Baldwin, Gail Klesick, Cathie Boyd, Libby Peck.

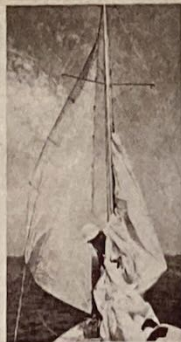
Photo at right shows Amberjack and Spindrift at Sebonic. In the overloaded pram at lower right are Commodore Paterson, Fran Pasch, Maggie Paterson, Bob (Very Nervous) Pasch, with Robbie Paterson at stalled outboard. Harry and Kay Klesick are standing by to pick up survivors. Destination was Harry Jonas' welcome Cocktail Party at Canoe Place Inn.



10:15 HOUR—A younger participant, in carrying chest of dark clothing and drenching gear, sits on a drench pad.



10:45 LEAVE—Perhaps because of the sudden light breeze, the boat is somewhat off the mark. There are a couple of other boats in the area. The people in the dinghy are headed for Commodore Point, Seaboard Inn.



11:00 PROBLEM—Was standing mast of the boat an obstruction here to block their heads or rigging? The crew is a normal while waiting before the wind.



FAMILY STYLE—Mother, father, brother, sister, son, son of the helm and daughter are in a boat on Seaboard in a line with the boat-crewed off the mark. (and take out the helm) during an eight run in the boat of all possible weather.

11:15—A group of people on a boat, with a child at the helm.



SUMMARY OF 1960 ACTIVITIES

The season was officially opened on Monday, May 30th with a flag-raising ceremony at the Babylon Yacht Club. 23 boats made the ceremony, a remarkable record considering the Spring monsoons. Boats in attendance were Whistler, Sea Witch, Mallard, Lady Lou, Golden Eagle, Bear, Pontus, Star Dust, Wooden World, Sparkling Waters, Mehitabel, Katinka, Polymer, Spindrift, Shrimp, Brandy, Wahoo, Swan Song, Errant, and Sea Rover.

BAY SHORE INVITATION REGATTA -- JUNE 18

27 boats started in a light breeze that wandered all over half the compass. On corrected time, boats finished as follows:

Class A: Oriana, Good Girl, Hispaniola, Southern Cross, Golden Eagle, Nor'easter, Lorelie, Poegasus, Gull (DNF).

Class B: Tradewinds, Sumaka III, Amberjack, Morning Star, Windblown, Lady Lou, Spindrift, Sea Witch, Blue Teal.

Class C: Brandy, Halcyon, Sacre Blue, Nancee, Sea Song (no handicap).

LADIES' RACE -- JUNE 17

First race of season and it blew. All the one-design races were called off from Babylon to Bellport. But nobody told Lucille Miligi so she went out and won the race, the only finisher, in Oriana. Polly Grimes, in Amberjack, got first place just for starting. Third place was a tie between Shirley Lawrence in Lorelei, who blew out her jib, and Marie Faas in Shrimp, who reefed down, finally, to her engine.

TENTH ANNUAL CRUISE

Cruise Chairman, Captain Harry Kelesick, reported the following boats in a happy fleet: Spindrift, Amberjack, Brandy, Wooden World II, Katinka, Star Dust, Mallard, Wooden World I, Gardaloo, Adventure, Perriwinkle, Nor'easter, Bay Bee, Windblown, Wahoo, Halcyon, Lively Lady, Southern Cross, Tranquil. Four boats joined the cruise to Cormorant Point, then headed back West on Sunday because their owners ran out of vacation.

Cruise skippers displayed the sailor's traditional independence of spirit by peeling off for different destinations. These included Block Island, Mystic, Hamburg Cove, Sag Harbor. A wild northeast gale on Thursday, July 14th caught Brandy, Amberjack, and Wooden World II in the middle of a white and wicked Peconic Bay, but a little seamanship and a lot of luck saw them through without so much as a missing dink.

Social highlight of a social cruise was the cocktail party at Canoe Place Inn given by Harry and Ruth Jonas, later voted host and hostess of 1960. The refreshments flowed bounteously and hors d'oeuvres got a real going-over, as more than one first mate advised the Captain to, "eat plenty, there may be no dinner tonight."

WEST ISLAND RACE -- JULY 23

The order of finishes on corrected time in each class were:

Class A: Oriana, Hispaniola, Lorelei, Roman Holiday, Ruth, Extra Dry, Pegasus, Edput III, Tolarie.

Class B: Lady Lou IV, Amberjack, Morning Star, Sea Witch, Sumaka II, Sassenach, Semiramis, Tranquil, Spindrift, Whimsey, Quartet, Viking, Lollypop, Tradewinds, Blue Dolphin, Lore.

Class C: Jeanne, Cataumet, Shrimp, Bay Bee, Nancee.

Class X: Vivace, 3 Sisters, Knot.

1960 RACE WEEK -- CRUISING CLASS

Vivace took Class X and the most number of points, 200. In the combined Class ABC, the results were as follows: Jeanie and Hispaniola tied for first, Oriana, Viking, Good Girl, Pools, Roman Holiday, Shrimp, Tranquil, Amberjack, and Naked Maja.

BABYLON INVITATION REGATTA -- JULY 3

This one turned into quite a blow. At least four skippers wished they'd never started. Here's how the boats finished on corrected time:

Class A: Good Girl, Oriana, Golden Eagle, Loma Doone, Hispaniola, Lorelei, Extra Dry.

Class B: Pegasus, Tradewinds, Amberjack, Spindrift.

Class C: Jeanne, Nancee; Class X: Three Sisters; DNF: Lady Lou V, Sparkling Waters, Morning Star, Nor'easter, Bounty, Knot, Tranquil.

FOULKE TROPHY RACE -- AUGUST 13

Miserable race. No breeze. Nobody finished before the 6 a.m. time limit posted on the committee boat. Skippers who disregarded time limit and finished anyway, came in unofficially as follows:

Class A: Oriana, Danza, Maumac, Hispaniola, Southern Cross, Good Girl.

Class B: Star Dust, Spindrift, Harpoon; Class X: Knott Vivace.

SINGLE-HANDED CREEPSTAKES

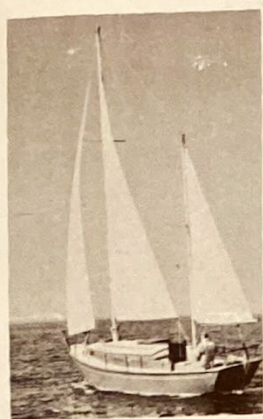
35 boats turned out. Nobody fell overboard or broke anything important. Finish order as follows:

Class A: Good Girl, Oriana, Extra Dry, Maumac, Reverie, Lively Lady, Adventure, Nor'easter, Lorelie, Golden Eagle, Quartet, Valkyrie, Sacre Bleu, Blue Dolphin.

Class B: Amberjack, Lady Lou, Bear, Sumaka II, Sassenach, Lively Lady, Spindrift, Star Dust, Whimsey, Semerant, Harpoon, Spindrift, Escape.







NO. 156 POLYMER



NO. 28 BLUE JACKET



NO. 87 BETTY



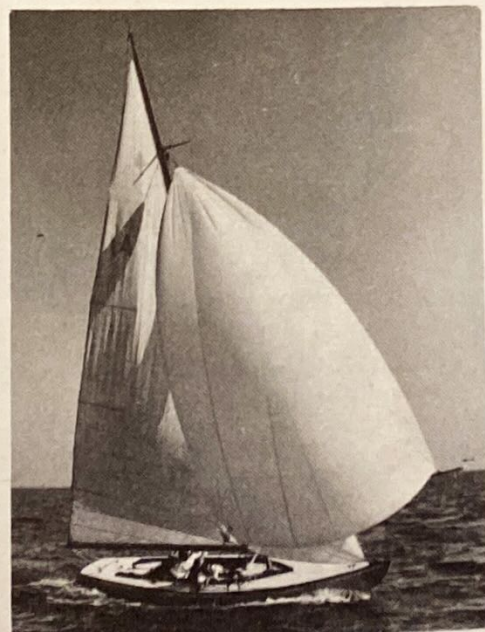
NO. 43 SPICY ISLES



No. 161 UNINVITED



NO. 122 CHANCE



NO. 88 ALLEGRO



NO. 52 HALCYON



NO. 26 GANNETT



NO. 19 SEA WITCH



NO. 84 EXTRA DRY



NO. 2 STARBRIGHT



NO. 15 CHANTEY



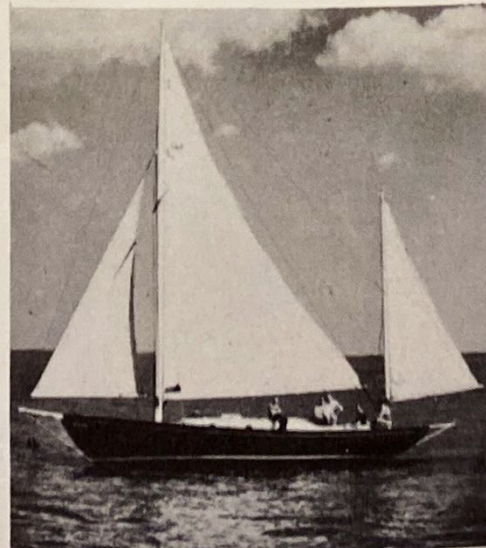
NO. 61 CATAUMET



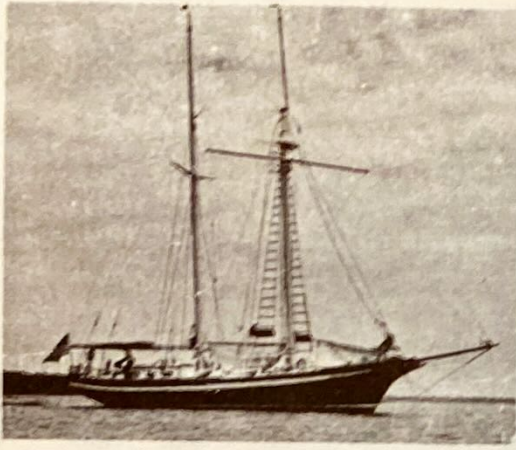
NO. 75 WOODEN WORLD



NO. 127 HORNPIPE



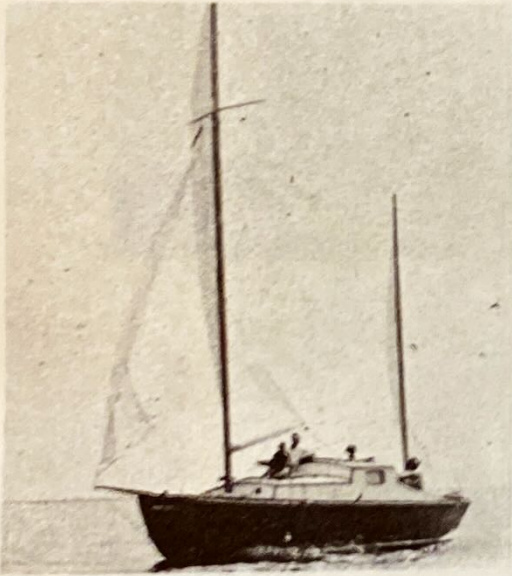
NO. 3 MAUMAC



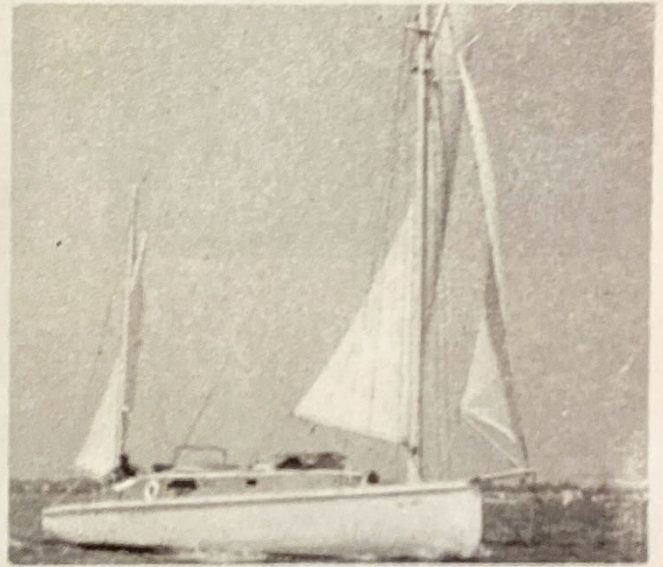
NO. 6 INDEPENDENCE



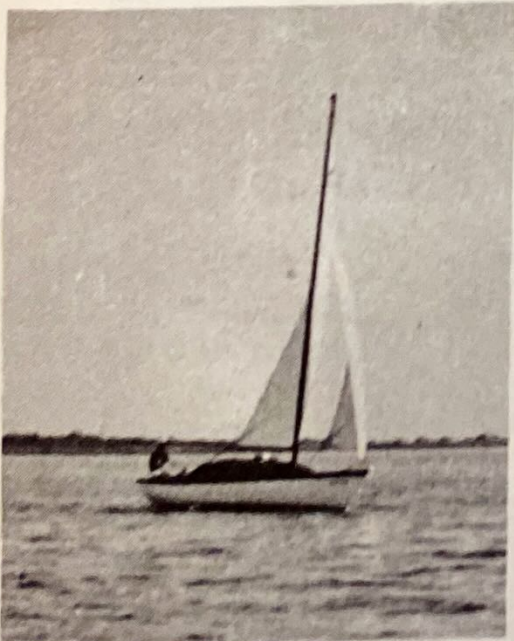
NO. 22 BEAR



NO. 93 WHIMSEY



NO. 7 KATINKA SR.



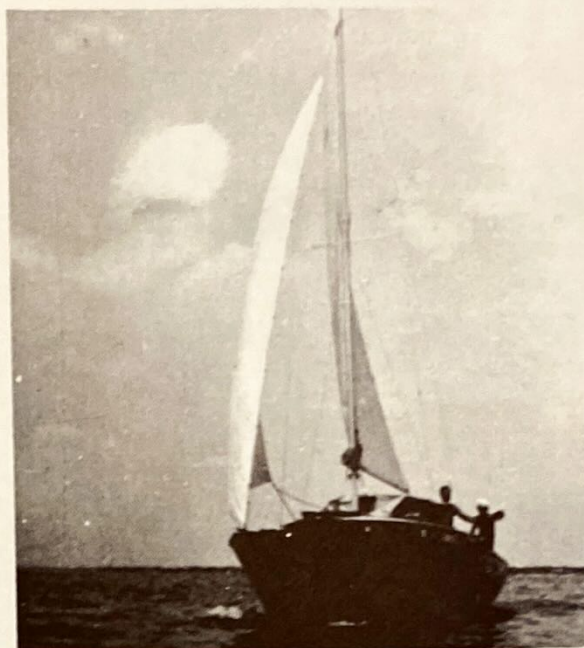
NO. 92 MADCAP II



NO. 85 RAHNEE



NO. 9 GOLDEN EAGLE



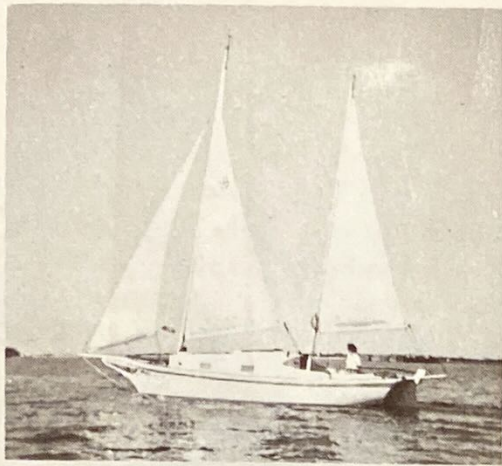
NO. 95 MALLARD



NO. 89 SPINDRIFT



NO. 70 LORELEI



NO. 31 STAR DUST



NO. 79 SYREN III



NO. 65 RETE



NO. 35 BAYBEE



NO. 148 VALKYRIE



NO. 62 LIVELY LADY



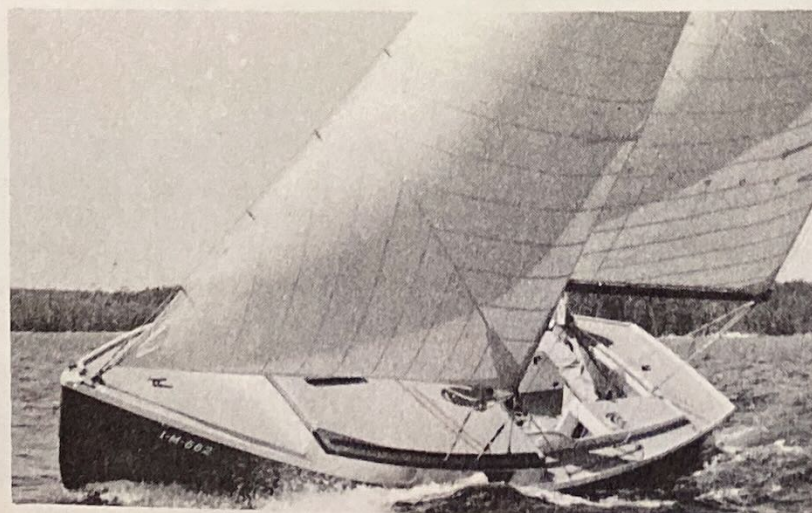
NO. 130 WINDBLOWN



NO. 120 LORNA DOONE



NO. 152 SPINDRIFT



NO. 117 SUMAKA III

MEMBERS

John R. Adams	(Bobbie)	5301 Pine Terrace	Ft. Lauderdale
Donald M. Armstrong	(Mary)	32 Village Line Rd.	Babylon
John P. Atherton		145 West Islip Rd.	West Islip
G. Gorton Baldwin	(Florence)	84 West Islip Rd.	Babylon
G. Gorton Baldwin, Jr.	(Sarah Lee)	188 West Islip Rd.	Babylon
Stuart Baldwin	(Sarah)	146 Araca Rd.	Babylon
Walter F. Batten	(Reba)	93 Lakeland Ave.	Babylon
Arthur E. Baxter	(Anita)	21 Totten Place	Babylon
David C. Becker		27 Lawrence Lane	Bay Shore
Frederic A. Becker	(Pat)	64 Cormack Court	Babylon
William Beckett	(Dorthea)	144 Annuscamonica Rd.	Babylon
John D. Beinert	(Helen)	32 Robert Street	Babylon
R. H. Bennett	(Louise)	132 Exeter Rd.	Massapequa
Harold Beberian		74 Oakwood Ave.	Bayport
John P. Berdolt	(Margaret)	5 Barry Road	Amityville
Francis N. Berger		126 Broadway	Amityville
Sidney Berkowitz	(Harriet)	119 Elm Street	Woodmere
Clay Bernichon	(Marion)	98 Sequams Lane, West	West Islip
John Bernichon	(Lois)	84 Lincoln St.	Babylon
Chester Blakelock	(Marjorie)	Belmont State Park	Babylon
Winthrop R. Block		837 East Bay Drive	West Islip
Freeman Bloodgood	(Rose)	154 Cedar Lane	Babylon
F. Richard Blue	(Florence)	153 Eaton Lane	Babylon
F. Richard Blue, Jr.	(Molly)	324 Fire Island Ave.	Babylon
Macklin Boettger	(Maureen)	123 Araca Rd.	Babylon
William Borneman		508 Avon Pl.	West Islip
Richard Boyd		57 South Bay Ave.	Islip
Fred Braddon	(Evelyn)	70 Village Line Rd.	Babylon
William F. Bradt	(Penny)	179 Sequams Lane	West Islip
W. S. Brayshaw	(Ruth)	100 Peninsula Drive	Babylon
Owen E. Brooks	(Marilyn)	70 Grand Central Ave.	Amityville
Richard E. Brown	(Dot)	11 Wagstaff Lane	West Islip
Joseph G. Bruchner	(Lorraine)	40 Monroe St.	Massapequa Pk.
A. Duncan Cameron		31 Mowbray Ave.	Bay Shore
Robert Carl	(Gen)	206 Woodsome Rd.	Babylon
Clayton R. Carmen		133 Sequams Lane	Babylon
Austin J. Cate	(Evie)	156 Cedar Lane	Babylon
Edward A. Chamber	(Eleanor)	94-31 59th Ave.	Rego Park, N.Y.
H. W. Chapman, Jr.	(Bera)	445 Richland Blvd.	Brightwaters
Harry S. Colleran	(Marilyn)	16 Amherst Dr.	Massapequa
David H. Collins	(Gerry)	75 S. Carll Ave.	Babylon
Jerome Collins	(Claire)	2 Legend Lane	Westbury
Robert T. Concha	(Eleanore)	175 Peninsula Drive	Babylon
Ralph C. Condit	(Joan)	202 Arnold Avenue	West Babylon
William H. Cook	(Mary Ann)	16 East Orowoc Ave.	Islip
Edward F. Dannemiller	(Jean)	175 Woodsome Rd.	Babylon
J. D. Darnell	(Jo)	116 Peninsula Drive	Babylon
Thomas E. Dauch	(Janet)	161 Montgomery Ave.	North Babylon
Julien T. Davies, Jr.	(Janet)	45 Montrose Avenue	Babylon
Raymond Davis, Jr.	(Anna)	Bergen Lane	Bluepoint
William H. Deale	(Florence)	40 Parkwood Rd.	Babylon
Ramon DeMurias	(Carlin)	74 Douglas Avenue	Babylon

Lloyd Dobkin	(Betty)	57 Franklin St.	Amityville
D. Cary Dodd	(Jeanne)	140 Cadman Avenue	Babylon
Peter H. Dunckelmann		81 Bedford St. (5B)	New York City 14
Lansing T. Dupree	(Carolyn)	110 West Islip Rd.	Babylon
Robert C. Eberle	(Mary)	250 Fire Island Ave.	Babylon
Robert S. Eccleston	(Helen)	45 DeForest Ave.	West Islip
Fred C. Eggerstedt, Jr.		1553 Kenneth Ave.	Baldwin
Charles W. Faas, Jr.	(Marie)	84 Eaton Lane	West Islip
Edward E. Farrell	("Pete")	504 Avon Place	West Islip
George W. Fear	(Helen)	51 Village Line Rd.	Babylon
Harry P. Fishel	(Lorraine)	41 Eaton Lane	West Islip
Laurence Paul Fishel		P.O. Box 1032	Easton, Md.
Arthur J. Flynn	(Elizabeth)	4 Neptune Place	Massapequa
Robert K. Frankenfield	(Sally)	11 Muncie Rd.	Bay Shore
Frank Freeman	(Beverly)	20 East 93rd St.	New York City
Fernley Fuller	(Norma)	39 Jones Drive	Sayville
Robert L. Garben		Candlewood Path, RFD 1, Dix Hills	Huntington
Joseph Gettler, Jr.	(Dixie)	142 Browers Lane	Roslyn Heights
Walter H. Gibson	(Jessie)	74 Marion Place	Rockville Centre
Barrett C. Gilbert	(Evelyn)	43 Lawrence Lane	Bay Shore
Robert N. Gilmore, Jr.	(Ann)	41 Parkwood Rd.	West Islip
Francis deS. Gorman	(Margaret)	4 Bayside Place	Amityville
H. W. Gottwald	(Ruth)	114 Shinnecock Ave.	Massapequa
Edwin Grauer		9 William St.	Babylon
Stewart Green	(Iris)	214 Woodson Rd.,	Babylon
Millard F. Griffith	(Jessica)	55 Sequams Lane	West Islip
Francis E. Grimes	(Polly)	153 Melbury Rd.	Babylon
James R. Grover	(Mary)	185 Woodsome Rd.	Babylon
H. Haab		1238 Garden Place	Wantagh
Robert Haberman		95 Araca Rd.	Babylon
Joseph Hack		260 East Shore Drive	Amityville
Gilbert Haight	(Marion)	183 Ocean Avenue	Amityville
Cyrus Hamlin			Manset, Maine
Marston L. Hamlin	(Charlotte)	251 Rocklyn Ave.	Lynbrook
Thomas E. Hanaway	(Nan)	56 Kingsland Pl.	Babylon
Theodore Hangarter	(Judith)	300 Willets Lane	West Islip
William G. Hansen	(Frances)	444 Deer Park Ave.	Babylon
Fred Hard	(Hildegard)	87 South Saxon Ave.	Bay Shore
Charles F. Hayward	(Betty)	40 Cormack Ct.	Babylon
Alfred H. Heckel	(Joan)	183 West Islip Rd.	West Islip
Jack Held	(Jo Anne)	70 Hewlett Court	Babylon
David Henderson	(Ann)	68 Araca Rd.	Babylon
Elmer G. Hery		96 Peninsula Dr.	Babylon
Walter R. Heyman	(Hilda)	269 Lakeview Ave. W.	Brightwaters
Pierson Hildreth	(Kathryn)	176 Riverside Ave.	Amityville
M. Hoagland		251 Willetts Lane,	West Islip
Sidney G. Holand	(Sara)	25 Caledonia Ave.	Babylon
F. S. Holwell	(Doris)	88 Purdy Lane	Amityville
Robert G. Holzmacher	(Ardith)	24 Lafayette Ave.	Amityville
Herbert E. Horn		25 Nancy Dr.	Sayville
Elmer B. Howell, Jr.	(Suzanne)	138 Mansfield	Darien, Conn.
Rogers Howell	(Mary)	20 Dorset Lane	Babylon

Sidney R. Huey		40 Skookwams Ct.	West Islip
R. C. Hunt	(Dolly)	Station B	Poughkeepsie, N.Y.
Carl Huus, Jr.	(Kay)	47 Hamilton St.	Sayville
John B. Hyde	(Katherine)	15 Old Tree Lane	Great Neck, N.Y.
G. R. Ince	(Isabel)	115 Sackville Rd.	Garden City
Livingston Jennings	(Helen)	235 Secatogue Lane	West Islip
Harry Jonas	(Ruth)	165 W. 72 (18L)	New York City
Richard P. Kent, Jr.	(Dorothy)	125 So. Merrick Ave.	Merrick
Paul Ketcham	(Muriel)	62 New Point Place	Amityville
Harry N. Klesick	(Catherine)	145 Baylawn Ave.	Copiague
H. Berkeley Knox	(Eleanor)	27 Sumpwams Place	Babylon
Edward Koubek		Great River Rd.,	Great River
John Kraker	(Anita)	113 Vesper Court	Babylon
Joseph D. Larmor		18 West Lane	Bay Shore
Bryan Lawrence	(Sue)	1 Virginia Avenue	Babylon
Robert T. Lawrence	(Shirley)	West Islip Rd.	West Islip
Rollins LeSavage	(Gerry)	62 Oak St.	Babylon
Ira W. Levy	(Olive)	180 Ocean Avenue	Bayport
J. W. Livingston	(Elizabeth)	Great River Rd.	Great River
Robert A. Locke	(Helen)	139 Sequams East	West Islip
Ralph W. Logan	(Norma)	28 Secatogue Lane	West Islip
Robert A. Love		38 Bellport Lane	Bellport
Harry B. Luke	(June)	Box 152	W. Brentwood
Frank Lyons	(Jeanne)	256 Crowell St.	Hempstead
Edward Macy	(Marie)	Trebar Road	Amityville
John Maltese	(Gail)	218 Woodson Rd.	Babylon
Robert Mayer	(Thor)	245 West 11th St.	Deer Park
Boyd C. Max		12 Brightwaters Pl.	Massapequa
Daniel D. McCarthy	(Pat)	5 Glenwood Rd.	Rockville Centre
George A. Merry	(Lois)	61 New Point Place	Amityville
Francis T. Miles	(Bingie)	44 Bergen Lane	Bluepoint
Raymond Miligi, Jr.	(Lucille)	193 Tahlulah Lane	West Islip
Robert A. Moore	(Lee)	42-11 Cpl. Kennedy	Bayside
Eugene F. Moran		235 Lake View Ave. W.	Brightwaters
C. W. Morch	(Mary)	521 S. Dyre	West Islip
John H. Morris	(Marion)	19 Secatogue Lane	West Islip
Carl Muller		Oak Neck Lane	Babylon
John M. Murphy	(Margaret)	147 Melbury Rd.	Babylon
Morris Nepo	(Renee)	144 Pacific St.	Massapequa Park
Roger G. Nichols		3960 John Lane	Seaford
Nathaniel Norton		230 Seamon Ave.	Bayport
Carl Nutzhorn		23 Sherwood Rd.	Rockville Center
Bryan M. O'Reilly		112 Saxon Ave.	Sayville
Louis H. Orr, Jr.	(Libby)	40 Sequams Lane E.	West Islip
J. Vincent O'Shea, Jr.	(Helen)	40 Paumanake Ave.	Babylon
Frederick Pallas	(Adele)	60 Everett St.	North Patchogue
Charles B. Palmer	(Lois)	Ivy Lodge-Clock Blvd.	Amityville
Winslow Palmer	(Marion)	8 Stuart Ave.	Amityville
Christopher J.A. Parker	(Patricia)	228 Water Lane S.	Wantagh
Robert Pasch	(Fran)	42 Dundee Ave.	Babylon
Robert L. Paterson	(Maggie)	43 Cornack Court	Babylon
Stuart Paterson	(Charlotte)	165 Annuskemunica Rd.	Babylon
Alex Pearson		6 Flower Hill Lane	Bay Shore

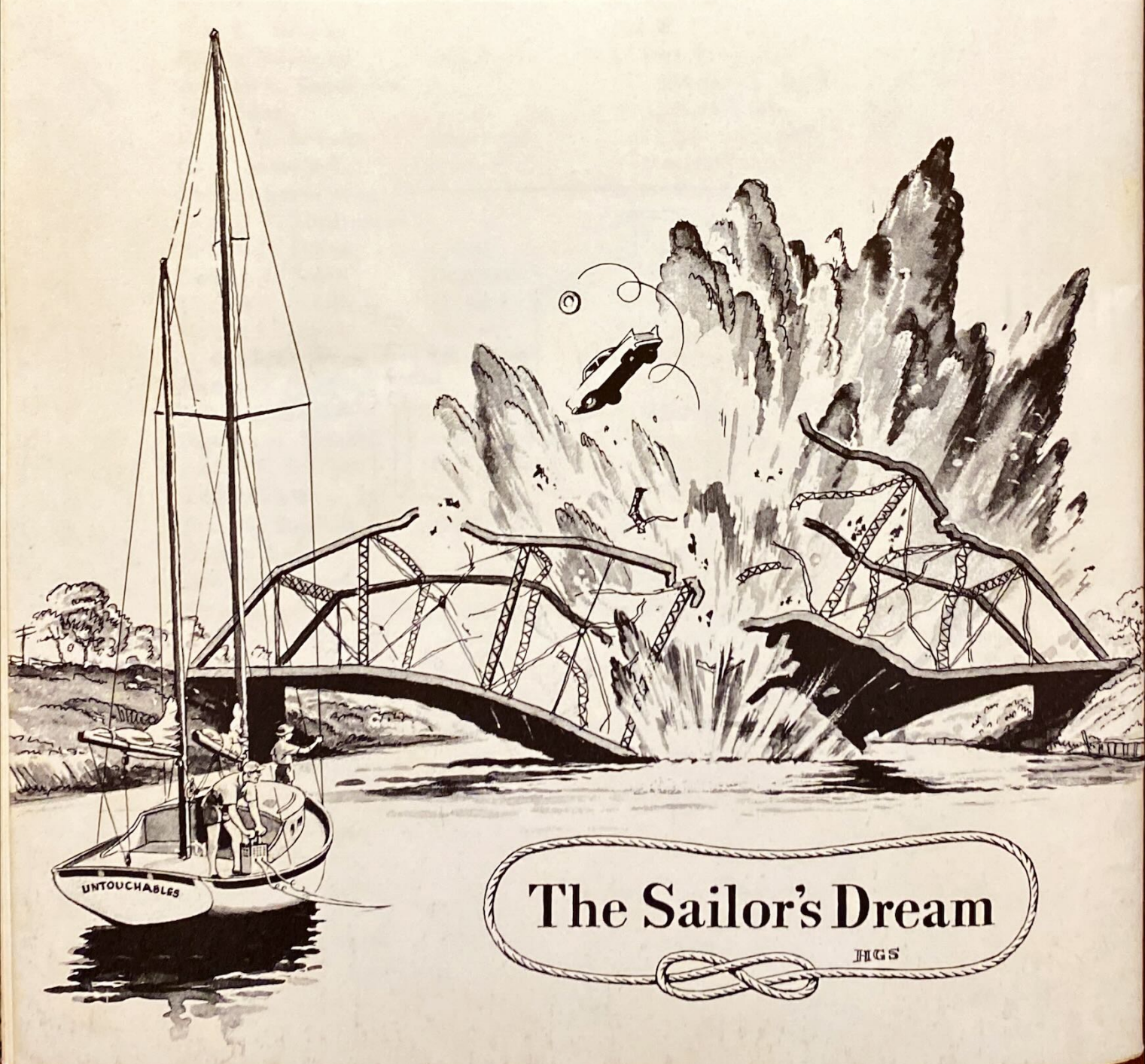
Eugene W. Peck	(Eleanor)	9 Montrose Ave.	Babylon
Albert J. Peterson	(Eleanor)	101-13 Jamaica Ave.	Richmond Hill
Raymond B. Petry		175 Cedar Ave.	Rockville Centre
Marshall W. Picken	(Barbara)	58 Thompson Ave.	Babylon
Robert C. Picoli	(Donna)	55 First St.	Garden City
William H. Plauth	(Esther)	19 Hildreth Rd.	Amityville
Lester Poe		195 Woodson Rd.	Babylon
Edmund W. Poor	(Fannie)	28 Garner Lane	Bay Shore
Henry A. V. Post	(Molly)	42 Dorset Lane	Babylon
Edward Prince	(Kay)	24 Talley Ho Lane	Alexandria, Va.
Robert E. Purcell		3 Glen Road	Massapequa Park
Roger G. Ramsdell, Jr.		28 Walnut Ave.	Rockville Center
Peter Rhodes	(Helen)	14 Parkdale Drive	Babylon
William John Roberts	(Winifred)	78 Wagstaff Lane	Babylon
John G. Robb		21 Parkdale Drive	Babylon
Theodore K. Ronald		6 Prassan Ave.	Patchogue
Bud Rosenberg	(Harriet)	34 Secatogue Lane, E.	West Islip
Wallace C. Ross	(Ann)	13 Academy Lane	Bellport
Robert Roth	(Aileen)	81 Highland Ave.	West Islip
John L. Ruseau		101 W. 23rd St.	New York City 11
Elliott Saltzman	(Natalie)	17 Bay View Ave.	Amityville
John McE. Sanderson		142 Sequams Lane W.	West Islip
Jack Saxe		30 Hollins Lane	East Islip
Robert W. Schafer	(Nanette)	113 Lighthouse Rd.	Babylon
C. L. Scharfe Jr.	(Helen)	83 Peninsula Dr.	Babylon
Everett Seidenberg	(Teddy)	South Carll Ave.	Babylon
Kensel W. Shoemaker		2414 Jackson Ave.	Seaford
Robert F. Simes	(Ann)	247 Tahlulah Lane	West Islip
George J. Smith	(Margaret)	57 Melbury Road	Babylon
Hervey G. Smith	(Elsie)	76 Hampton St.	Sayville
Merritt L. Smith	(Janet)	169 Sequams Lane	Center West Islip
Howard Snyder	(Betty)	72 Shore Rd.	Babylon
Barrie D. Sparling		124 Hilton Ave.	Garden City
John Spear, Jr.		Wyandanch Lane	Amagansett
Newton E. Spiess	(Dess)	Fernwood Ave.	Oakdale
Arthur J. Spollen	(Marguerite)	26 River St.	Sayville
Ted Sprague		2144 Hudson- Aurora Rd.	Hudson, Ohio
Fred W. Stechart	(Nancy)	475 County Line Rd.	Amityville
W. Strecker		10 Larkspur Dr.,	West Islip
Don Streit	(Phyllis)	Brown's Lane	Bellport
Stewart Strong		175 West Islip Rd.	Babylon
James A. Swan, Jr.	(Nancy)	31 Willow Street	Babylon
William Symons	(Ricki)	South Clocks Blvd.	Amityville
Robert J. Tarr	(Janet)	123 Peninsula Drive	Babylon
John M. Tegins	(Mary Alice)	79 Nassau Ave.	Babylon
Richard Thall		273 Windsor Ave.	Brightwaters
M. Whiting Thayer, Jr.	(Joyce)	232 Ocean Ave.	Amityville
William E. Thomas	(Mary)	10 Cabot Rd. W.	Massapequa
William P. Thorn	(Barbara)	51 Coles Ave.	Amityville
Edwin Thorne		108 E. Bayberry Pt. Rd.	Islip
Trygre Thygesen		Cedar Lane Boatyard	Babylon
Henry G. Tilden	(Ruth)	48 Foster Lane	Babylon
Charles S. Trattler	(Honey)	7 Locust Cove Lane	Kingspoint

Richard W. Trumble	(Lucy)	15 Dorset Lane	Babylon
Thomas Underhill	(Kate)	14 White Birch Drive	Babylon
Charles A. Voso	(Margaret)	114 Peninsula Drive	Babylon
A. G. Wambach	(Helen)	203 Melbury Rd.	Babylon
Frank E. Wanser	(Betty)	100 Ocean Ave.	Amityville
Joseph Warnock	(Mildred)	27 North Plaza	Amityville
Walter Waterman	(Alberta)	61 Grand Blvd.	Massapequa Park
Robert G. Webb		16 Wingra Ave.	Rutherford, N.J.
Oliver H. Whitney	(Lillian)	2 Grace Court Alley	N. Y. C.
Edward C. Wimmerstedt	(Eleanor)	848 East Bay Drive	Babylon
Ronald S. Wishart		90 Cedar Ave.	Rockville Centre
Robert Wissmann	(Charlotte)	20 Brown Blvd.	Wyandanch
Judson F. Wordon	(Phyllis)	14 Robin Lane	Levittown
John B. Wragge	(Alma)	25 Lake End Drive	Merrick
Ferdinand Wyckoff	(Dot)	Box 174	Babylon
Alexander G. Yaxis		29 Hamilton St.	Amityville
John F. Young	(Jenni)	106 West Islip Rd.	West Islip
Joseph F. Young	(Jean)	35 Village Line Rd.	Babylon



"So that's where you kept yourself all winter!"

THE AMERICAN HOME, MAY, 1961



The Sailor's Dream

HGS



