

South Bay Cruising Club
1970



PHOTO CREDITS

Cover, Bob Morsut; pages 1, 32 (top), Herb Glover; page 2, Douglass & McLeod; pages 16 and 36, John Woodward; page 25, Dick Milligan; pages 26 and 44, Ken Kondor; page 31, NASA photo; pages 32 (bottom) and 33, Mickey Walsh; page 34, Ed Johnson; page 35, Grumman; inside back cover, Peter Barlow.



CONTENTS

From the Masthead	2
1970 Officers	3
Certificate of Incorporation	4
Constitution / By-Laws	6
Committee Functions	11
SBCC Story	13
1970 Schedule	14
Racing Information	16
Cruising Information	26
Radio Communication	27
1969 Activities Review	31
SBCC Fleet by Sail Numbers	39
Members	45
Zip Codes	53
Alphabetical Yacht List	54

CONSTITUTION

*Adopted Sept. 19, 1951
(with subsequent amendments)*

Article I

NAME: The organization shall be known as the "South Bay Cruising Club".

Article II

CLUB DEVICE: The club device, insignia and flag shall be a truncated pennant similar in proportions to the International Signal Code "Answering" and "Numeral" pennants. The upper portion of the flag shall be white to represent the fresh salt air, the lower portion shall be green to represent the water; the water shall silhouette two stylized uniformly diminishing waves, the largest being at the staff. The flag's proportions are to be: Hoist 9 inches, Length 21 inches, Height outboard end 4 inches, Wave height, top to bottom, maximum end $6\frac{3}{4}$ inches, minimum end 3 inches.

Article III

OBJECT: The object of the South Bay Cruising Club is to promote cruising under sail on Great South Bay and nearby waters.

Article IV

MEMBERSHIP: The membership shall comprise two classes: regular members, and honorary members.

Article V

SECTION 1. (Amended 1956)

Government: The officers of the club shall consist of a Commodore, Vice Commodore, Rear Commodore, Corresponding Secretary, Recording Secretary, Treasurer, Fleet Captain, Fleet Surgeon and Chanteyman.

SECTION 2. *Management:* The general management and control of the affairs of the club shall be vested in a Board of Governors consisting of the officers of the Club; the chairman of each active committee, and seven members of the club, who shall be duly elected to the Board.

Article VI

SECTION 1. *Amendments:*

This constitution may be amended only by the affirmative vote of two thirds of all members in good standing present at a regular or special meeting. Amendments are to be read at one meeting and voted on at the next meeting.

SECTION 2. No proposition to amend this constitution shall be acted upon at any meeting of the South Bay Cruising Club, unless it shall have been presented in writing to the Secretary, signed by at least three active members. A notice embodying the purport of the proposed amendment shall have been sent to each active member of the club in the call for such a meeting, which notice shall be sent at least fifteen calendar days prior to the date thereof.

BY-LAWS:
Adopted May 2, 1952
(with subsequent amendments)

Chapter I
Meetings

SECTION 1. There shall be no less than four general meetings in each year, one of which shall be held in January and be known as the Annual Meeting. Notice of the time and place of holding same shall be sent to each member at least ten days prior thereto.

SECTION 2. Meetings, other than the Annual Meeting, may be called by the Commodore or by the Board of Governors. Notice of time and place of holding of such meeting must be sent to each member at least five days prior thereto. The Commodore or Board of Governors must call a special meeting of the Club when so requested in writing and signed by at least five members of the Club and at such meeting only the special business for which the meeting was called shall be considered. The notice shall refer to said special business.

SECTION 3. At all meetings of the Club twenty five members shall constitute a quorum.

SECTION 4. If a quorum be not present, the presiding officer may adjourn the meeting to a day and hour fixed by him, suitable notices to be sent to every member on the roster ten days or more prior to the meeting. Should the meeting again fail to constitute a quorum, the matter for which the meeting was called may either be brought up at the next general meeting under the heading of *new business* or ruled *of no consequence* but the presiding officer of the special meeting that has failed to constitute a quorum for the second time and if so ruled, the matter is to be considered closed unless reopened by petition of ten members for a special meeting.

SECTION 5. At all regular meetings the order of business, except as ordered by the Club, shall be:

1. Reading and Correction of Minutes
2. Report of Officers
3. Report of Committees
4. Elections
5. Unfinished Business
6. General Business

SECTION 6. Stated meetings of the Board of Governors shall be held at such times and places as the said Board shall designate from time to time. Seven members of the Board of Governors shall constitute a quorum.

SECTION 7. Special meetings of the Board of Governors may be called by the Commodore, and shall be called by him on the written request of any member of the Board.

Chapter II
Membership

SECTION 1. There shall be two classes of members:

Regular Members—Regular members shall be members elected by the Board of Governors and in good standing.

Honorary Members—An Honorary member is to be any person unanimously elected as such by the Board of Governors. This status is reserved for such persons who have made unusual contributions to the Club. Such a member shall enjoy all privileges of active membership and shall be exempt from dues and assessments.

SECTION 2. A member shall be considered a member in *good standing* if his dues are paid for the period up to the next annual meeting. If a new member pays his dues after Columbus Day his membership shall be extended through the next year.

SECTION 3. No award, trophy, or office may be received by or conferred on any member not in good standing.

SECTION 4. A member in good standing may resign his membership by delivering a written notice hereof to the Secretary, who shall report same at the next meeting of the Board of Governors.

SECTION 5. In order to be eligible for election to regular membership every candidate must be the owner of a cruising auxiliary or cruising sailboat and must be sponsored by two members in good standing. A two thirds majority vote of the Board of Governors shall be required for election to membership.

SECTION 6. An election to membership shall not be valid until the candidate shall have paid to the Treasurer the initiation fee and dues.

Chapter III

Elections

SECTION 1. The Commodore, Vice-Commodore, Rear Commodore, Recording Secretary, Corresponding Secretary, Fleet Captain and the seven elected governors shall be chosen by ballot at the Annual meeting of the Club. Each member in good standing shall be entitled to cast one vote for each office and a majority of the votes so cast shall be necessary to elect a candidate. Tellers shall be appointed by presiding officer.

SECTION 2. Nominations of candidates for the foregoing offices shall be proposed by a Nominating Committee consisting of the following:

- The current Commodore
- Two members of the Board of Governors
- Three members of the Club, appointed by the Commodore, who shall not be members of the Board of Governors.

SECTION 3. At least one month prior to the annual meeting, the nominating committee shall mail to all members of the club a proposed slate to be voted upon. Additional names may be added to this slate if submitted to the nominating committee in writing ten days prior to the annual meeting by any five members of the club in good standing.

SECTION 4. The Flag Officers may not hold the same office for more than two terms.

SECTION 5. In the event of a vacancy occurring in any office or in the Board of Governors, such vacancy may be filled by a majority vote at a meeting of the Board of Governors and the term of such officer or Governor shall expire at the time of adjournment of the next annual meeting and the vacancy, if any thus created shall be filled by election at that annual meeting in the manner hereinbefore provided.

Chapter IV

Duties and Powers of the Board

SECTION 1. The Board of Governors shall have the general management and control of the affairs and funds and property of the Club and all rights and powers connected therewith shall be vested in them.

SECTION 2. At each annual meeting or within thirty days thereafter the newly elected Commodore will appoint such committee chairmen and committees as he deems necessary. Committee chairmen thus appointed become additional members of the Board of Governors unless otherwise provided in the appointment.

SECTION 3. The Board of Governors shall perform the following specific duties:

- a. Manage all the affairs of the Club and take charge of Club property.
- b. Hold meetings at which a quorum shall consist of at least the following seven members of the Board:
 - One of the Commodores
 - One of the Secretaries, or the Treasurer
 - Five other members of the Board.
- c. Keep minutes of their proceedings and present a written report at each annual meeting.
- d. Reprimand or otherwise discipline any member whose conduct is detrimental to the welfare of the Club.

Chapter V

Duties of Flag Officers

SECTION 1. The Commodore shall command the fleet, preside at meetings of the Club and Board of Governors, enforce the rules and regulations and appoint chairmen of necessary committees.

SECTION 2. He may call special meetings of the Club and he shall do so at the written request of three members of the Board of Governors or of five members of the Club. He may call informal meetings during a regatta or cruise but no business shall thereby be transacted unless it be of a temporary nature.

SECTION 3. The Vice Commodore shall assist the Commodore in discharging his duties, and his absence shall succeed to the functions and perform the duties which would devolve upon the Commodore if present.

SECTION 4. In the absence of the Commodore and the Vice Commodore, the Rear Commodore shall succeed to the functions and perform the duties which would devolve upon the Commodore if present.

SECTION 5. In the absence of the three Commodores, Treasurer, Recording Secretary, Corresponding Secretary, or the senior elected member of the Board shall succeed to the above mentioned duties in that order.

Chapter VI

Duties of The Corresponding and Recording Secretaries

SECTION 1. The Corresponding Secretary shall furnish each member with a roster of club members and their addresses, including names and ratings of vessels of the club fleet. He shall notify each member of each meeting of the club and shall send out to the members such notices as are herein prescribed. He shall be in charge of the club's official correspondence.

SECTION 2. The Recording Secretary shall keep a true record of all proceedings at all meetings in a book provided for that purpose. Upon request, a new member shall be entitled to a copy of the Constitution and By-Laws which copy shall be furnished by the Recording Secretary.

Chapter VII

Duties of the Treasurer

SECTION 1. The Treasurer shall be custodian of the Club funds and shall maintain an accurate balance sheet of same. He shall make a Treasurer's Report at each meeting and shall advise the Board of Governors on all expenditures and disbursements. He shall, when so directed by the Board of Governors furnish a list of those members in arrears and make recommendations thereon. He shall receive all dues and make report of same to the Secretary.

SECTION 2. The Treasurer shall make all disbursements authorized by the Commodore and shall so maintain his records of same that an accounting may be ordered by the Board of Governors at any time on ten days notice.

SECTION 3. The Treasurer shall notify each member elect of his election and upon membership being perfected shall furnish him with a membership card.

SECTION 4. The Treasurer will prepare the Annual Treasurer's Report.

SECTION 5. The Treasurer will keep the Master list of racing numbers, assign numbers and keep the necessary chairman promptly informed.

Chapter VIII

Duties of the Fleet Captain

SECTION 1. The Fleet Captain shall be the Chairman of the Cruising Committee and shall be in charge of all logistics in connection with fleet activities.

Chapter IX

Duties of the Fleet Surgeon

SECTION 1. The Fleet Surgeon will make available his professional skill and knowledge when an emergency so requires. He shall advise the Board of Governors on matters of health and sanitation which might arise out of a proposed Club activity.

Chapter X

Duties of the Chantyman

SECTION 1. The Chantyman will lead in the singing of appropriate ballads when so requested by the Commodore and may from time to time render such original compositions which the moment might demand. He shall be a permanent member of the Entertainment Committee.

Chapter XI

Dues and Assessments

SECTION 1.

a. Regular members shall be assessed ten dollars per year.

b. Members who wish to race in Club events shall pay a racing fee, which if imposed, will be set by the Board of Governors each year.

- c. New members shall pay an initiation fee of ten dollars in addition to the annual dues.
- d. Honorary members will not be required to pay any dues during the period of their honorary membership but shall pay the racing fee if they race.

Chapter XII

SECTION 1. To qualify as a vessel in the Club Fleet the yacht in question must be a sailing yacht or auxiliary equipped for cruising under sail or a power boat equipped for cruising. Questions of doubt will be resolved by the Board of Governors.

Chapter XIII

Nautical Etiquette and Flags

SECTION 1. Nautical customs and traditions shall be observed at all times, particularly while cruising.

- a. Flag officers, including the Fleet Captain will fly the appropriate signal on their own yachts unless cruising with another club.
- b. All members may fly the club burgee unless participating in a cruise or regatta sponsored by another organization to which they belong.
- c. Other authorized flags and pennants may be flown when appropriate.

Chapter XIV

Committee Chairmen

SECTION 1. The Chairmen of the following standing committees shall be members of the Board of Governors and shall perform the duties assigned to them by the Commodore:

Cruising
Entertainment
Handicap
Measurement
Membership
Public Relations
Regatta
Year Book

Chapter XV

Amendments to By-Laws

SECTION 1. Amendments to the By-Laws may be adopted at any meeting by a two thirds vote provided that the notice of the meeting shall have contained such amendments in full.

COMMITTEE FUNCTIONS

The number of committees vary slightly from year to year. However, the club generally has 15 to carry out the many facets of our activities. Sometimes, our members are not clear on the purpose of each (maybe the committees, too) and this section is intended to help all to understand each committee's job, responsibility, i.e., function.

Cruising Committee: Under our By-Laws the elected Fleet Captain becomes the chairman of this committee. The committee participates in planning the season's activities schedule with the Commodore and Regatta Chairman. It sets itineraries and leadership for groups in the mid-July Annual Club Cruise, coordinates the May-October week end rendezvous points with the racing and entertainment program and confirms arrangements for the official fall cruise in early October. When the cruise schedule has been accomplished, the Fleet Captain and his committee compiles the record of the fleet from rendezvous reports and logs. This information is used to present awards for outstanding off shore cruises, annual cruise and high number of week-end rendezvous. This committee arranges for all purchase of awards, necessary engraving and makes the presentations during the winter general membership meeting of the club.

Entertainment Committee: To this group fall the problems of organizing and conducting the social events of our club. A typical year's program will include an informal spring cocktail party, Commissioning Day, champagne breakfast, summer dinner dance, fall cocktail party, Christmas party, and a winter dinner dance. All planning and implementing of the year's social program is handled by this committee.

Handicap Committee: Establishes and maintains a Scale of Time Allowances for every active yacht in the SBCC Fleet, as calculated from past performance or estimates of yacht potential; whereby every member of the Club desiring to participate in Club races may compete for Fleet Trophies on an equitable basis regardless of type of yacht or quality of equipment.

Maintains separate listings of Time Allowances calculated by the MORC and CCA Measurement Rule for those yachts with official ratings under the particular Class Rule.

Maintains an archive of racing performance by accumulating records of all possible time data from member yachts racing on Great South Bay, from which ratings can be developed, modified or projected, and tested for validity.

Compiles listings of yacht ratings under the Rating Rules adopted by the Fleet Classes.

Issues tentative performance ratings for yachts which have not yet established performance.

Publishes periodic lists of Performance and Measurement Time Allowances for each yacht active in the racing program.

Receives all race results for re-check and final determination of standings. This committee is the final judge of results subject only to the decisions of the Protest Committee. Constantly reviews both results and procedures to assure Club aims are being met and that methods allow other committees to operate effectively.

Measurement Committee: Formed to qualify and employ measurers to secure ratings for handicap racing. The committee serves as a counselling group to racing skippers who wish to secure a qualified measurement rating. In addition, all questions relating to the eligibility of a particular yacht in meeting club standards as a cruising auxiliary sailboat as required for membership or numbering are referred to this committee for investigation and recommendation back to the membership committee.

Membership and Numbering Committee: This committee drafts and distributes an application form for prospective members. The committee receives and processes applications for membership according to the Constitution, By-Laws, and guidelines established by the Board of Governors. Assures that sponsors are members in good standing and that the applicant's yacht is a cruising sailboat. Completed applications are submitted to the Board with recommendations for action and reports Board's decision to the applicants. The Membership Committee also maintains the boat list (of cruising sailboats) and either assigns sail numbers or records numbers assigned by N.A.Y.R.U. Copies of the boat list are furnished to the Year Book, Regatta, Cruise and Handicap Committees as required.

Racing Protest Committee: This committee adjudicates all protests received by the club. Appeals are referred to the Great South Bay Yacht Racing Association Appeals Committee. The group normally operates under a listed chairman who upon receiving a protest will assemble at least two SBCC members for his committee.

Public Relations Committee: Prepares releases of newsworthy items of public interest for distribution to periodicals and newspapers. These include lists of newly elected officers, social events, race results, and recipients of club awards. As items are published it is desirable for the chairman to obtain clippings and prepare a binder for the club archives. On occasion it may be possible to obtain special feature articles on club activities in Sunday supplements or yachting magazines.

Regatta Committee: Establishes all rules and regulations for the season's official races, prepares a written description of course instructions for each race, and establishes racing committee(s) to conduct each race. This committee establishes the club's racing program and then implements it throughout the season.

Trophy Committee: Obtains corrected lists of race results from the Handicap Committee and determines who will receive trophies. With the approval of the Board of Governors, the committee will select and purchase suitable trophies and have them engraved. The committee will arrange with the Commodore and Program Chairman for a suitable presentation date.

Year Book Committee: This committee is responsible for publishing the SBCC Yearbook for delivery to the members prior to the opening of the official season. All material and its format in the final published form is the responsibility of this committee.

THE SBCC STORY

The saga of the South Bay Cruising Club, which has evinced much interest in other areas of the American Yachting world, had its start a quarter century ago in the dawn of the current boating boom. Great South Bay presented quite a different picture in those days, with relatively few power boats and only a handful of cruising sailboats, mostly of "early" vintage. Overnight anchorages were more numerous and pleasant, some were downright isolated. The yacht clubs of the GSBYRA continued their pre-war emphasis on small one-design racing and usually ignored the interests of their cruising members.

The need for an organization of cruising skippers was imperative since their needs and problems differed substantially from their one-design brothers. No one man or event can be credited with the SBCC idea. It just seemed to evolve among the small impromptu fleets that anchored those nights at Smith Point, Whale Path and Connetquot River, thus serving as the beginning of our story.

In the Spring of 1951 Ted Zimmerman, as temporary chairman, spread the first rumors and later convened the first meeting in a smoke-filled Babylon Yacht Club. Parliamentary procedure took a setback as 28 opinionated, cantankerous individualists each tried to force through his own version of a cruising club. One skipper wanted to ban all "Establishment" trappings such as mailing lists, dues, flag officers, etc. Others were strongly in favor of building a clubhouse.

More moderate minds prevailed and the first slate was elected, headed by Commodore Bill Carl, and Ted Zimmerman "rated" our heterogeneous fleet for the first West Island Race. The years that followed were very successful, when measured in terms of membership and fleet improvement. But this success did not seem to alter or dilute the basic ingredients of our Story. The same comraderie of the old 3 boat rafts still prevailed at 30 or 40 boat rendezvous. Nowadays, it just takes longer for a new member to meet 300 members than it did with only thirty. Much of the credit for this "magic" must be assigned to the Club's founders. For them, fellowship was not something that needed to be prescribed in our By Laws . . . it was the sole reason for forming our Club.

The Story is also full of paradoxes. Our "open" membership policy, a relaxed and philosophical cruising attitude, a casual disregard for certain yachting amenities and flag etiquette, all seem incompatible with our efficient central administration that provides a unique year round social program, an extensive racing and cruising schedule, newsletters, yearbooks, and cruising guides enough to rival the publishing output of many more prestigious clubs.

Our files are filled with members who have served us well. Here is the list of former commodores and present life members.

Former Commodores:

Organizational Chairman June 1951 — Ted Zimmerman

1951 — Bill Carl	1962-3 — John Beinert
1952-3 — Jamie Swan	1964-5 — Ev Seidenberg
1954-5 — Jack Young	1966-7 — Roger Ramsdell
1956-7 — Henry Post	1968-9 — Alex Pearson
1958-9 — Merritt Smith	1970 — Fred Eggerstedt, Jr.
1960-1 — Bob Paterson	

Life Members:

Hervey G. Smith
Merritt Smith
John Beinert

SBCC SCHEDULE FOR 1970

Racing

Cruising

MAY

<p>9 Sat. 10 Sun.</p> <p>16 Sat. Early Bird Race—Bay Shore 17 Sun. Early Bird Race—Bay Shore</p> <p>23 Sat. Early Bird Race—Babylon 24 Sun. Early Bird Race—Babylon</p> <p>30 Sat. 31 Sun.</p>	<p>9 Sat. 10 Sun.</p> <p>16 Sat. SPRING COCKTAIL PARTY—BAY SHORE YC Committee Boat: Highland Fling 17 Sun.</p> <p>23 Sat. Rendezvous at Hemlock 24 Sun. Committee Boats: Vi, Bonny Lass</p> <p>30 Sat. Rendezvous at Great River Committee Boat: Syren 31 Sun. COMMISSIONING DAY—BABYLON Y.C.</p>
--	---

JUNE

<p>6 Sat. Bay Shore Invitation 7 Sun.</p> <p>13 Sat. Smith Trophy Race 14 Sun.</p> <p>20 Sat. Ladies' Day Race 21 Sun.</p> <p>27 Sat. Narrasketuck Invitation 28 Sun.</p>	<p>6 Sat. Rendezvous at Great River 7 Sun. Committee Boat: Tamb</p> <p>13 Sat. Rendezvous at Watch Hill; Weather 14 Sun. port, Great River; Committee boat: Dulcinea</p> <p>20 Sat. Rendezvous at Sailor's Haven; 21 Sun. Weather port, Great River; Committee Boat: Orca</p> <p>27 Sat. Hemlock Rendezvous with Polly Bee 28 Sun. Watch Hill Rendezvous with Sea Cloud</p>
---	---

JULY

<p>3 Fri. 4 Sat. Babylon Invitation 5 Sun.</p> <p>11 Sat. Ocean Race—I 12 Sun.</p> <p>18 Sat. Sayville Invitation 19 Sun. Sayville Invitation</p> <p>25 Sat. Bay Race 26 Sun.</p>	<p>3 Fri. Evening at Hemlock—Orca 4 Sat. Evening Sail to Great River—South Wind 5 Sun.</p> <p>11 Sat. 12 Sun.</p> <p>18 Sat. 19 Sun.</p> <p>25 Sat. 26 Sun.</p>
---	---

A
N
N
C
U
R
A
U
L
I
S
E

SBCC SCHEDULE FOR 1970

Racing

Cruising

AUGUST

<p>1 Sat. GSBYRA—Bay Shore 2 Sun. GSBYRA—Bay Shore 8 Sat. GSBYRA—Babylon 9 Sun. 15 Sat. West Island Race 16 Sun. Character Boat Race 17 Mon. GREAT RIVER WEEK Begins 22 Sat. 23 Sun. 29 Sat. Foulke Trophy Race 30 Sun.</p>	<p>1 Sat. Great River—Whisper 2 Sun. 8 Sat. Hemlock—Bonny Lass 9 Sun. 15 Sat. 16 Sun. Champagne Breakfast—Great River 17 Mon. Great River—Skylark 22 Sat. SUMMER DINNER DANCE— LAND'S END RESTAURANT 23 Sun. 29 Sat. 30 Sun.</p>
---	---

SEPTEMBER

<p>5 Sat. Commodore's Cup 6 Sun. 7 Mon. 12 Sat. Ocean Race II Scandinavian Cruise Race 13 Sun. Babylon Y.C. Fall Series 19 Sat. Single-Handed Creepstakes 20 Sun. Babylon Y.C. Fall Series 26 Sat. Cruising Committee Invitation 27 Sun. Cruising Committee Invitation</p>	<p>5 Sat. Forge River Rendezvous—Vi 6 Sun. Great River—Orca 7 Mon. 12 Sat. Sore Thumb—Lena 13 Sun. 19 Sat. CLAMBAKE—BABYLON Y.C. 20 Sun. Committee Boat: Puritan 26 Sat. 27 Sun.</p>
---	--

OCTOBER

<p>3 Sat. Babylon Y.C. Fall Series 4 Sun. Babylon Y.C. Fall Series 10 Sat. 11 Sun. 17 Sat. Discoverer's Race 18 Sun. Wind-up Races 24 Sat. Wind-up Races 25 Sun. Wind-up Races 31 Sat.</p>	<p>3 Sat. Watch Hill—Adelaide S. and Dulcinea 4 Sun. 10 Sat. Cedar Beach—Polly Bee and Vi 11 Sun. 17 Sat. 18 Sun. 24 Sat. 25 Sun. 31 Sat.</p>
--	---

NOVEMBER

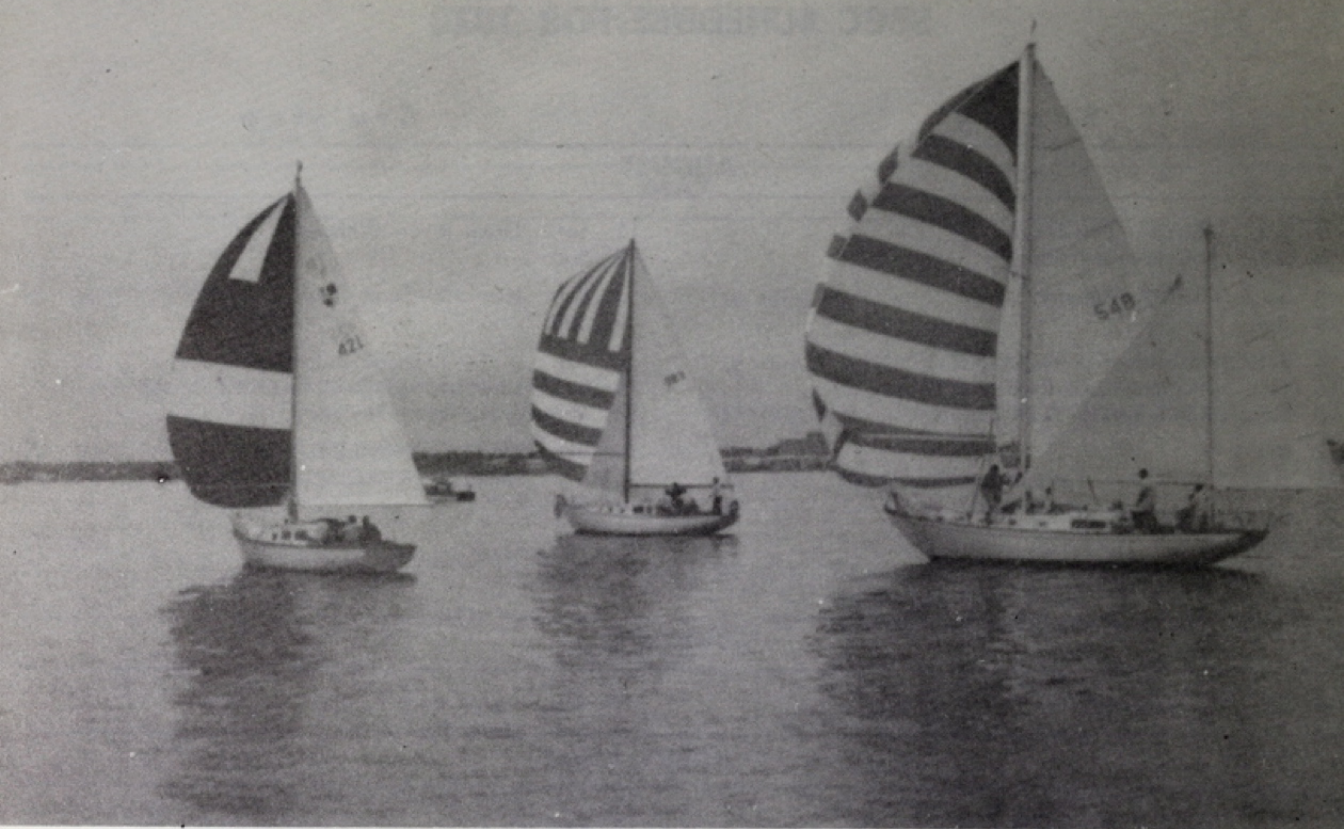
<p>7 Sat. FALL COCKTAIL PARTY—CULLEN'S BOATYARD 18 Wed. 8:30 p.m.—Film Lecture by Capt. I. Johnson—"Yankee Sails Scandinavia"</p>

DECEMBER

<p>12 Sat. CHRISTMAS PARTY—LONG ISLAND Y.C.</p>

FEBRUARY

<p>13 Sat. SPRING DINNER/DANCE—LA GRANGE</p>
--



RACING INFORMATION

ELIGIBILITY

All proper cruising sailboats owned or chartered by SBCC members are eligible and welcome to participate in Club races. Any such yacht properly sailing the course will have her time taken and her finish position calculated. However, the Club has established a racing fee to help defray the cost of this portion of its program. No SBCC racing trophy will be awarded to a yacht which has not paid this fee prior to the start of the race in which the trophy was won. Trophies for cruising, cruise-races and character boat races are not subject to the preceding restriction.

HANDICAPS

The SBCC Fleet includes many widely differing types of cruising sailboats. In order to make participation in Club races attractive to as many members as possible, the Club offers both Performance Handicap and Measurement Rule racing. Under this dual system, every yacht in the fleet is automatically given a Performance Rating based upon its past racing performances. All permanent or fleet-wide trophies are awarded under this rating system because it is the only system which covers all of the yachts in the club fleet. In addition, members may elect to obtain measurement certificates for their yachts, qualifying them to race under the MORC or Storm Trysail rules.

Performance Handicap Classes

The Performance Handicap system encourages participation by cruising skippers, particularly those with yachts not designed to a measurement rule, by providing handicaps reflecting the actual performance of the yacht and by keeping red tape

Racing Information (Continued)

to a minimum. The performance system assumes that a particular boat usually tends to sail about the same percent faster or slower than the average of the fleet regardless of the conditions of the day, so that inherent differences between boats can be equalized by multiplying elapsed time by a Handicap Factor expressing how much faster or slower than average the particular boat can be expected to sail.

The Handicap Factor of a particular yacht is determined by a weighted average of past performances, minimizing the influence of old data and biased toward good performances, so that a better-than-average performance is required to win. The Handicap Factor so obtained is converted to a seconds-per-mile rating relative to a standard of about 800 seconds per mile, which has been found to be about the average speed of the fleet in Club events. The rating of each yacht is then converted to a time allowance in seconds per mile relative to a Scratch Boat (fastest boat in the fleet) which has zero time allowance. A yacht's corrected time in a race is then calculated by multiplying its time allowance by the course distance and subtracting the result from the yacht's elapsed time in the event.

Prior to racing a yacht in the fleet for the first time, the owner should contact the Handicap Chairman, Win Palmer. Mr. Palmer will provide an initial time allowance based on comparison with other boats in the fleet. As racing experience accumulates, this initial handicap will be replaced by an allowance calculated from performance. The initial handicap is only necessary in order to be eligible for a prize in the first race that a yacht sails.

Yachts racing under the Performance Handicap system will be assigned to Class A, B or C by the Handicap Committee on the basis of their time allowances.

Measurement Rule Classes

Measurement Rule racing is based on the assumption that the maximum speed potential of a yacht can be calculated on the basis of its physical measurements. Because such calculations do not take into account the condition of the yacht, variations in skippers, or historical performance, measurement racing lays heavy emphasis on boat speed relative to the calculated potential. Its special appeal is to the owners of yachts of modern design, equipped with a full complement of racing gear.

Yachts under 30 ft. LOA with a valid Midget Ocean Racing Club measurement certificate may elect to race in Class M, and those 30 ft. and over with a valid Storm Trysail Club 1965 Rule measurement certificate may elect to race in Class S. To race in one of these classes, it is the responsibility of the individual yacht owner to obtain a measurement certificate from a professional measurer recognized by the certificating organization. To assist in this matter, the Fleet Measurer, George Bouloukos, will arrange for boats to be measured in groups. These groups are formed during the Spring of each year and measuring is usually done on Saturdays, at some mutually convenient location.

All new yachts whose owners elect to race under a measurement rule, or previous measurement class yachts whose owners have made some change that would affect their measurement certificate, must be measured. The boat should be in the water, fully rigged and in racing condition in accordance with the rule under which the boat is to race.

It is the individual owner's responsibility to see that his up-to-date measurement certificate is on file with the Fleet Measurer. A yacht failing to comply with this requirement cannot be scored in the Measurement Classes.

Racing Information (Continued)

Handicaps in Class S and M are computed on the basis of a time allowance in seconds per mile obtained from the North American Yacht Racing Union tables for the certified rating of the yacht. All Class S and M yachts automatically acquire Performance Ratings in addition to and distinct from their Measurement Rule ratings. They are eligible for the permanent and fleet trophies on the basis of their Performance Ratings, as well as for the Class M or Class S trophies awarded to their particular classes under the Measurement Ratings.

IDENTIFICATION

Racing numbers are required on mainsails, spinnakers and overlapping headsails, in accordance with current NAYRU rules. The Regatta Committee has waived the headsail requirement for the 1970 season only. The requirement that offshore racing yachts carry NAYRU numbers has also been waived. Racing skippers are reminded, however, that such numbers are usually required for racing off the Bay.

Racing yachts are requested to fly streamers of the following colors from their standing backstays or the leach of their mainsails:

<i>CLASS</i>	<i>COLOR</i>
A	Red
B	Green
C	Yellow
S	White
M	Blue

Absence of a streamer will not be cause for disqualification, but in the event of any confusion resulting from such absence, the yacht will be assumed to have started with the first class to start. A finish gun for first to finish in class will not be given unless streamer is visible to the Race Committee.

STARTING SCHEDULE

Signals will be made at five-minute intervals with each signal lowered 30 seconds before the hoisting of the next. The visual signal governs; the gun merely calls attention to it. As noted in the course instructions below, classes will start as follows:

<i>Time</i>	<i>Shape</i>	<i>Regular Start</i>	<i>Combined Start</i>
:00	White	Warning	Warning
:05	Blue	Preparatory	Preparatory
:10	Red	Start, S	Start, S
:15	White	Start, M	Start, M
:20	Blue	Start, C	Start, A, B, C
:25	Red	Start, B	
:30	White	Start, A	

RECALL

Recall signal will be one blast of a horn or whistle for each yacht recalled. A yacht failing to hear or heed such signal will be penalized by having one-half hour added to her elapsed time.

Racing Information (Continued)

TIME LIMIT

Regardless of time of start, the time limit for each class will expire at 1800 for all races *except as noted otherwise in the course instructions*. If any yacht finishes within the time limit, it is a race for her class. Yachts finishing after the committee boat has left its station should take their own time and report it to the Race Committee as soon as possible.

SPECIAL SIGNALS

Code flags A through G are used to designate Great River Week courses; see

COURSE INSTRUCTIONS.

A — White and blue vertical bars, swallowtail shape

B — Red swallowtail

C — Blue, white, red, white, blue horizontal bars

D — Yellow, blue, yellow horizontal bars

E — Blue and red horizontal bars

F — Red diamond on white field

G — Yellow and blue alternating vertical bars

Code flags L through S apply to all SBCC-conducted races.

L — (yellow and black checks) — One of the designated course marks is missing; come within hail for instructions.

M — (white X on blue field) — Round or pass the object displaying this signal instead of the mark it replaces.

O — (red and yellow diagonal) — accompanied by two guns — Race called off.

P — (white square on blue field) — accompanied by two guns — Starts postponed 15 minutes. Warning signal will be made 30 seconds after P is lowered.

R — (yellow cross on red field) — Sail the designated course in the reverse direction.

S — (blue square on white field) — Sail the short course prescribed in the course instructions. When flown after the start (accompanied by two guns) means finish between the nearby mark and the committee boat.

PRIZES

Perpetual trophies are awarded for one year only. Scoring for these trophies is under the Performance Handicap system. All club yachts are eligible, Class S and M yachts being scored on a performance basis for these awards.

Trophies for individual SBCC races (when not part of a series), and for SBCC series, will be awarded to each group receiving a separate start signal, according to the following schedule:

<i>Number of Starters</i>	<i>Trophies</i>
1 through 3	1st
4 through 6	1st and 2nd
7 through 9	1st, 2nd and 3rd
10 or more	1st, 2nd, 3rd and 4th

In SBCC series, the greatest number of starters in any one race will govern the number of trophies awarded for the series. In addition, the winner in each group receiving a separate start signal will receive a Daily First trophy.

Racing Information (Continued)

SERIES SCORING

Points for each race will be awarded on the basis of $\frac{3}{4}$ -point for first, two points for second, three points for third, etc. DNF boats will receive 1 point more than the number of boats that started. DNS and DSQ boats will receive 2 points more than the number of boats that started. Series position will be determined by the total points accumulated by each yacht, in inverse order. Ties will be broken in favor of the boat which has beaten the other the greater number of times.

Early Bird Series

This series will be scored on the basis of a yacht's best three races.

Great River Week

This series will be scored on the basis of a yacht's best five races. In addition, the last three races (August 20, 21 and 22) will be scored as a separate three-race series.

Wind-up Series

These races will be scored as a three-race series. However, any yacht sailing the Discoverer's Race may use her finish position in the Discoverer's Race instead of one of the Wind-up races.

RULES

Racing rules of the NAYRU shall govern except as otherwise specified in these instructions. Burgees and other flags may be flown when racing. Government navigation buoys not stated to be marks of the course may be disregarded at the discretion of the skipper.

PROTESTS

All protests must be made in accordance with NAYRU Rule #68.

In particular:

- A protest flag shall be displayed until the protesting yacht has finished.
- An attempt shall be made to notify the protested yacht as soon as possible after the incident.
- The Race Committee shall be notified upon finishing.
- A written protest shall be filed with the Race Committee within 24 hours of the finish of the race, stating:
 - Name and racing number of yacht(s) being protested.
 - Date, time and whereabouts of the incident.
 - Rule or rules allegedly infringed.
 - Statement of facts.
 - Diagram of incident.

EQUIPMENT

The equipment required by NAYRU for Category 4 races is strongly recommended.

Racing Information (Continued)

COURSE INSTRUCTIONS

Early Bird Races: May 16 and 17. Warning gun—1300. Combined Start sequence. Start established by committee boat off Lawrence Creek; through center span of Captree Bridge to Flasher No. 7 off Oak Beach Channel; returning through center span of bridge to Flashing Green No. 1 off Bayberry Point; to finish line off Lawrence Creek. Leave all marks to port. Course distance—9.5 nautical miles. Race chairman May 16: Bill Bradt, May 17: Ralph Logan.

Early Bird Races: May 23 and 24. Warning gun—1300. Combined Start sequence. Start off Babylon Yacht Club; to Flasher No. 7 off Oak Beach Channel, leaving it to port; through center span of Captree Bridge to Flashing Green No. 1 off Bayberry Point, leaving it to port; to Black and White Flasher in Great Cove, leaving it to port; return through center span of bridge to finish line off Babylon Yacht Club (which should NOT be used as a rendezvous point for these and other solely SBCC functions, unless specifically instructed). Course distance—10.5 nautical miles. Race chairman May 23: Fred Becker, May 24: Roger Ramsdell.

If short course is signalled, omit Flasher No. 7 and proceed directly to the center span of bridge. Course distance—10.0 nautical miles.

Bay Shore Invitation: June 6. Warning gun—1300. Combined Start sequence. Start established by committee boat off Lawrence Creek; to Nun No. 6, east of Captree Bridge, leaving it to port; to Flashing Green No. 1 off Bayberry Point, leaving it to starboard; to Flashing Red No. 4 off Nicoll Point, leaving it to port; return to finish line off Lawrence Creek. Course distance—12.0 nautical miles.

Smith Trophy Race: June 13. Warning gun—1300. Combined Start sequence. Start established by committee boat off Port of Call Marina, Sayville; to Flashing Red No. 18 off Point O'Woods; to Red and Black Interrupted Quick Flashing Green off Patchogue Channel; return to finish line off Port of Call Marina. Leave all marks to port. Course distance—12.5 nautical miles.

Smith Trophy for first boat on corrected time in overall fleet.

Ladies' Day Race: June 20. Warning gun—1400. Combined Start sequence. Start established by committee boat off Brightwaters Canal; to Nun No. 6 east of Captree Bridge; to Flashing Green No. 1 off Bayberry Point; to Black and White Flasher in Great Cove; to finish line off Brightwaters Canal. Leave all marks to port. Course distance—5.5 nautical miles. Race chairman: Gene Reardon.

Broadsides Trophy for first boat with all-girl crew on corrected time in overall fleet. Yachts eligible for this trophy must so advise the Race Committee prior to their Warning Signal.

Narrasketuck Invitation: June 27. Warning gun—1000. Modified Start sequence. Shapes are alternating black and yellow. Classes S and M start together on the third signal (black shape) and Classes A, B, and C start on the fourth signal (yellow shape). Start established by committee boat off Amityville Creek; through center span of Captree Bridge to Flasher No. 31 off Blue Point, leaving it to port; return through center span of bridge to finish line off Amityville Creek. Course distance—36.0 nautical miles. Time limit is 2200.

If short course is signalled, the turning mark is Flashing Green No. 1 off Bayberry Point, leaving it to port, instead of Flasher No. 31. Course distance—19.5 nautical miles.

Racing Information (Continued)

Babylon Invitation: Saturday, July 4. Warning gun—1300. Regular Start sequence. Start established by committee boat off Willett Creek; to Flasher No. 7 off Oak Beach Channel, leaving it to port; through center span of Captree Bridge to Flashing Green No. 1 off Bayberry Point, leaving it to starboard; to Can No. 3 off Heckscher State Park, leaving it to port; to Black and White Flasher in Great Cove, leaving it to port; return through center span of bridge to finish line off Willett Creek. Course distance—13.5 nautical miles.

If short course is signalled, omit Flasher No. 7 and proceed directly to center span of bridge. Course distance—12.5 nautical miles.

Note: Trophies will be awarded at the Babylon Yacht Club on Sunday afternoon, July 5th.

Ocean Race I: July 11. Harbor start from Sore Thumb—0800. Warning gun—0900. Combined Start sequence. Start between Committee Boat and Buoy No. "4 Fl" off Fire Island Inlet; to Black and White Gong Buoy No. "J 1" off Jones Inlet and return, leaving No. "J 1" to port. Course distance—26.5 nautical miles. Race chairman: Al Heckel.

If short course is signalled, course is to Nantucket Sea Lane Lighted Buoy "NB" and return, leaving Buoy "NB" to port. Course distance—22 nautical miles.

Sayville Invitation: July 18 and 19.

July 18: Warning gun—1300. Combined Start sequence. Starting line between committee boat and Green Flasher No. 1 off Bayberry Point; to Nun No. 6 east of Captree Bridge; to Black Flasher No. 31 off Blue Point; to finish off Sayville Yacht Club. Leave all marks to port. Course distance—14.5 nautical miles.

If short course is signalled, omit Nun No. 6 and proceed directly from start to Flasher No. 31. Course distance—9.5 nautical miles.

July 19. Warning gun—1100. Combined Start sequence. Start established by committee boat in Patchogue Bay; to Flasher No. 31 off Blue Point; to Can No. 33 off East Patchogue; to Nun No. 4 off Patchogue; course sailed twice around; starting mark not a mark of course the second time around; finish off Sayville Yacht Club. Leave all marks to port. Course distance—12.0 nautical miles.

Scoring will be on the basis of a yacht's total corrected time for both days.

Bay Race: July 25. Warning gun—1300. Combined Start sequence. Start established by committee boat in Nicoll Bay; to Flashing Red No. 4 off Nicoll Point, leaving it to port; to Can No. 1 off Brown Creek, leaving it to starboard; to Flashing Red No. 18 off Point O'Woods, leaving it to starboard; return to finish line in Nicoll Bay. Course distance—13.5 nautical miles. Race chairman: Mickey Walsh.

GSBYRA Race Weekends: Races for cruising sailboats August 1 and 2 at Bay Shore, August 8 at Babylon. Warning gun—1300. Combined Start sequence. Courses to be announced by GSBYRA.

West Island Race: August 15. Warning gun—1300. Regular Start sequence. Start established by committee boat in Nicoll Bay; to Flashing Red No. 10 off Bay Shore; to Red and Black Quick Flasher off Saltaire; to Flashing Green No.

Racing Information (Continued)

15 off Point O'Woods; return to finish line in Nicoll Bay. Leave all marks to port. Course may be sailed in opposite direction with all marks left to starboard. Yachts must pass to the north of Flashing Red No. 8 SE of West Fire Island regardless of which direction the course is sailed. Course distance—15.0 nautical miles. Time limit is 1900. Race chairman: Ev Seidenberg.

Deale Trophy for first boat on corrected time in overall fleet. Schnur Trophy for last boat to finish.

Character Boat Race and Beauty Contest: Sunday, August 16. Yachts eligible for these events will be sent invitations by the Selection Committee in accordance with the Deed of Gift of the Character Boat Perpetual Trophy, the "Cruising Club Crock". Entries will sail by the Committee Boat at the mouth of Great River from 1230 to 1300 EDT for Beauty Contest judging. (Trophy to be awarded.)

Character Boat Race: All yachts at anchor, sails furled. Warning gun—1345; Preparatory gun—1350; all yachts start together at 1355. Start established by Committee Boat in mouth of Great River; to Nun No. 30 south of Green Point; to Flashing Green No. 5 off Nicoll Point; to finish in Great River. Leave all marks to starboard. First to finish is race winner. Race chairman: Bud Rosenberg.

Great River Week: August 17 through 22. Warning gun—1300. Combined start sequence. Start established by committee boat in Nicoll Bay. Race chairman: John Beinert.

Courses designated by flags of the International Code as follows:

A (white and blue vertical bars, swallowtail shape)—To Flashing Red No. 18 off Point O'Woods; to Flashing Green No. 1 north of shoal off Barrett Beach; return to finish line in Nicoll Bay. Leave all marks to port. Course distance—9.5 nautical miles.

B (red swallowtail)—To Flashing Red No. 18 off Point O'Woods; to Flasher No. 31 off Blue Point; return to finish line in Nicoll Bay. Leave all marks to port. Course distance—12.0 nautical miles.

C (blue, white, red, white, blue horizontal bars)—To Flashing Red No. 4 off Nicoll Point; to Flasher No. 31 off Blue Point; return to finish line in Nicoll Bay. Leave all marks to port. Course distance—12.0 nautical miles.

D (yellow, blue, yellow horizontal bars)—To Flashing Green No. 5 off Nicoll Point, leaving it to starboard; to Flashing Red No. 2 off Champlin Creek, leaving it to port; to Flasher No. 3 off Point O' Woods, leaving it to port; to Nun No. 28 in Nicoll Bay, leaving it to port; return to finish line in Nicoll Bay. Course distance—10.0 nautical miles.

E (blue and red horizontal bars)—West Island Race course.

F (red diamond on white field)—Bay Race course.

G (yellow and blue alternating vertical bars)—To Flashing Red No. 4 off Nicoll Point, leaving it to port; to Red and Black Interrupted Quick Flashing Green off Patchogue channel, leaving it to starboard; to finish line ½ mile north of Sailor's Haven. Course distance—14.0 nautical miles.

Foulke Trophy Race: August 29. Warning gun—1800. Regular Start sequence. Starting line between committee boat and Flasher No. 7 off Oak Beach Channel;

Racing Information (Continued)

through center span of Captree Bridge; to Flashing Green No. 1 off Howell Point, leaving it to port; return through center span of bridge to the finish line between the committee boat and the flagpole at the end of the Babylon Yacht Club dock. Course distance—34.0 nautical miles. No time limit for this race. All yachts welcome to lay over at Babylon Y. C. dock. Race chairman: Howard Hamstra.

The International Rules of the Road will be used instead of the Racing Rules between the hours of sunset and sunrise. All required lights must be shown.

Foulke Trophy for the first boat on corrected time in overall fleet. Sympatico Cup for last boat to finish.

Commodore's Cup: September 5. Warning gun—1300. Regular Start sequence. Start established by committee boat in Nicoll Bay; to Flashing Red No. 2 off Champlin Creek, leaving it to port; to finish line established by committee boat off Howell Point. Course distance—16.2 nautical miles. Time limit is 1900. Commodore's Cup is for first boat on corrected time in overall fleet. Race chairman: Whitey Thayer.

Ocean Race II: September 12. Instructions same as for Ocean Race I. Race chairman: Harry Colleran.

Scandinavian Cruise Race: September 12. Yachts start from any point in the Bay at 1300 EDT, sailing the maximum possible distance to finish off Saxon Arms at 1700 EDT. Two points are awarded per mile sailed, one point subtracted per minute late and one point subtracted per two minutes early. Yacht with most points is winner. Course sailed to be submitted to Committee Boat upon finishing. It is considered poor sportsmanship to slow one's boat intentionally by luffing or by any other means; one should sail a greater distance instead. All Club yachts are eligible. Race chairman: Bud Rosenberg.

Babylon Y. C. Fall Series: Sunday, September 13 and Sunday, September 20. Four-race series. Warning gun—1300. Combined Start sequence. Courses and scoring system to be announced.

Single-Handed Creepstakes: September 19. Warning gun—1400. Regular Start sequence. Start established by committee boat off Willett Creek; to Flasher No. 7 off Oak Beach Channel; through center span of Captree Bridge to Nun No. 6; return through center span of bridge to finish line off Willett Creek. Leave all marks to port. Course distance—4.6 nautical miles. Race chairman: Bill Cook.

Cruising Committee Invitation: September 26 and 27. Two separate two-day series will be raced, one from the eastern part of the Bay to Great River, returning the following day, and one from the western part of the Bay, returning the following day. Separate trophies for yachts from the east and west will be awarded on the basis of combined corrected time for the two days. Rules require yachts to tow a dinghy, not to set spinnakers, and to have crews sleep aboard on Saturday night. All Club yachts are eligible. Race chairmen: Bill Bracco, Ed Neale, Sr.

Eastern Bay: September 26. Warning gun—1300. Combined Start sequence. Start established by Committee Boat off Sayville Yacht Club; to Flashing Red No. 32 in Patchogue Bay; to Nun No. 30 south of Green Point; to finish in Nicoll Bay. Leave all marks to starboard. Course distance—8.0 nautical miles.

Racing Information (Continued)

Eastern Bay: September 27. Warning gun—1300. Combined Start sequence. Reverse the course sailed the previous day.

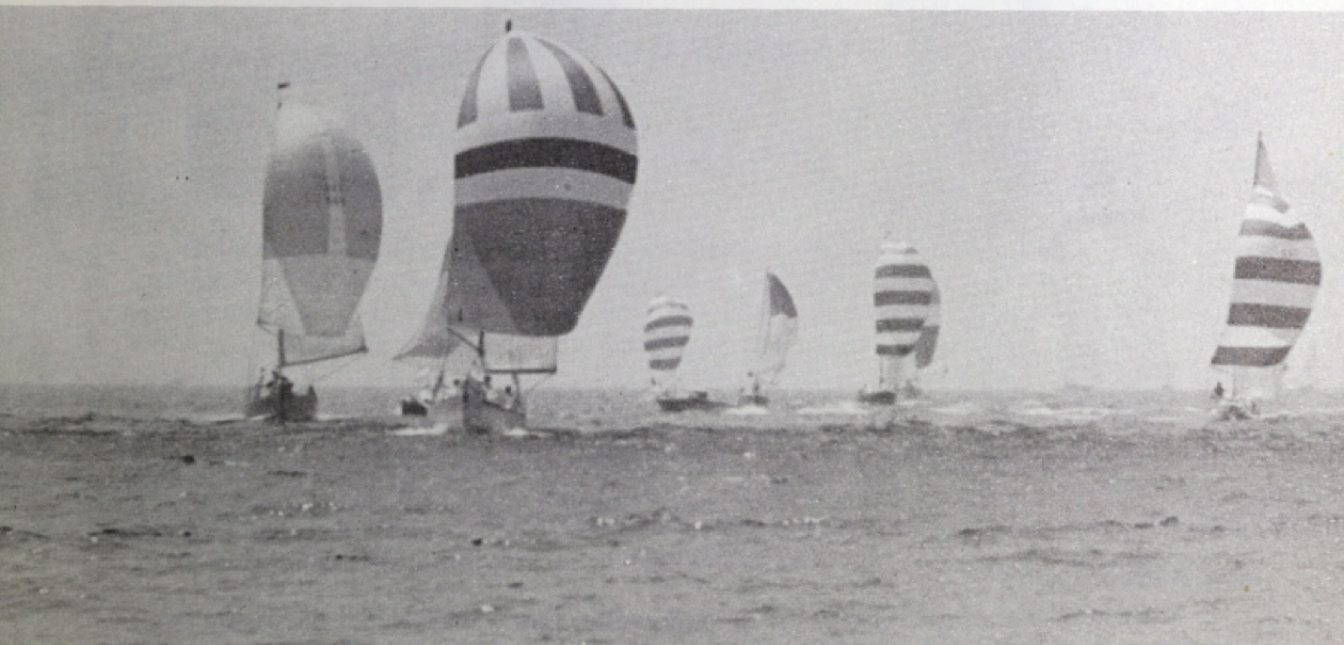
Western Bay: September 26. Warning gun—1300. Combined Start sequence. Start established by Committee Boat off Lawrence Creek in Bay Shore; to Nun No. 6 east of Captree Bridge, leaving it to port; to Flashing Green No. 1 off Bayberry Point, leaving it to starboard; to Flashing Green No. 29 south of Nicoll Bay, leaving it to port; to finish in Nicoll Bay. Course distance—10.5 nautical miles.

Western Bay: September 27. Warning gun—1300. Combined Start sequence. Start established by Committee Boat in Nicoll Bay; to Flashing Green No. 29 south of Nicoll Bay; to Flashing Green No. 1 off Bayberry Point; to finish off Lawrence Creek. Leave all marks to starboard. Course distance—7.5 nautical miles.

Continuation of Babylon Y. C. Fall Series: Saturday, October 3, and Sunday, October 4. Same instructions as first two races.

Discoverer's Race: Sunday, October 17. Warning gun—1300. Combined Start sequence. Start established by committee boat off Lawrence Creek; through center span of Captree Bridge to Flasher No. 7 off Oak Beach Channel; returning through center span of bridge to Flashing Green No. 1 off Bayberry Point; to finish line off Lawrence Creek. Leave all marks to port. Course distance—9.5 nautical miles. Race chairman: Pat Kelly.

Wind-Up Races: October 18, 24, and 25. Warning gun—1300. Combined Start sequence. Courses same as May 23 and 24 Early Bird Races (start off Babylon). Race chairman October 18: Fred Becker; October 24: Murray Greenbaum; October 25: Ed Neale.



Note: In the event that any of the preceding Race Chairman is unable to fulfill his commitment, one of the following gentlemen, each of whom has agreed to serve as a stand-by Race Chairman, may be expected to officiate: John Crimaldi, Dick Daytz, Bill Simonson, Don Zimmer.

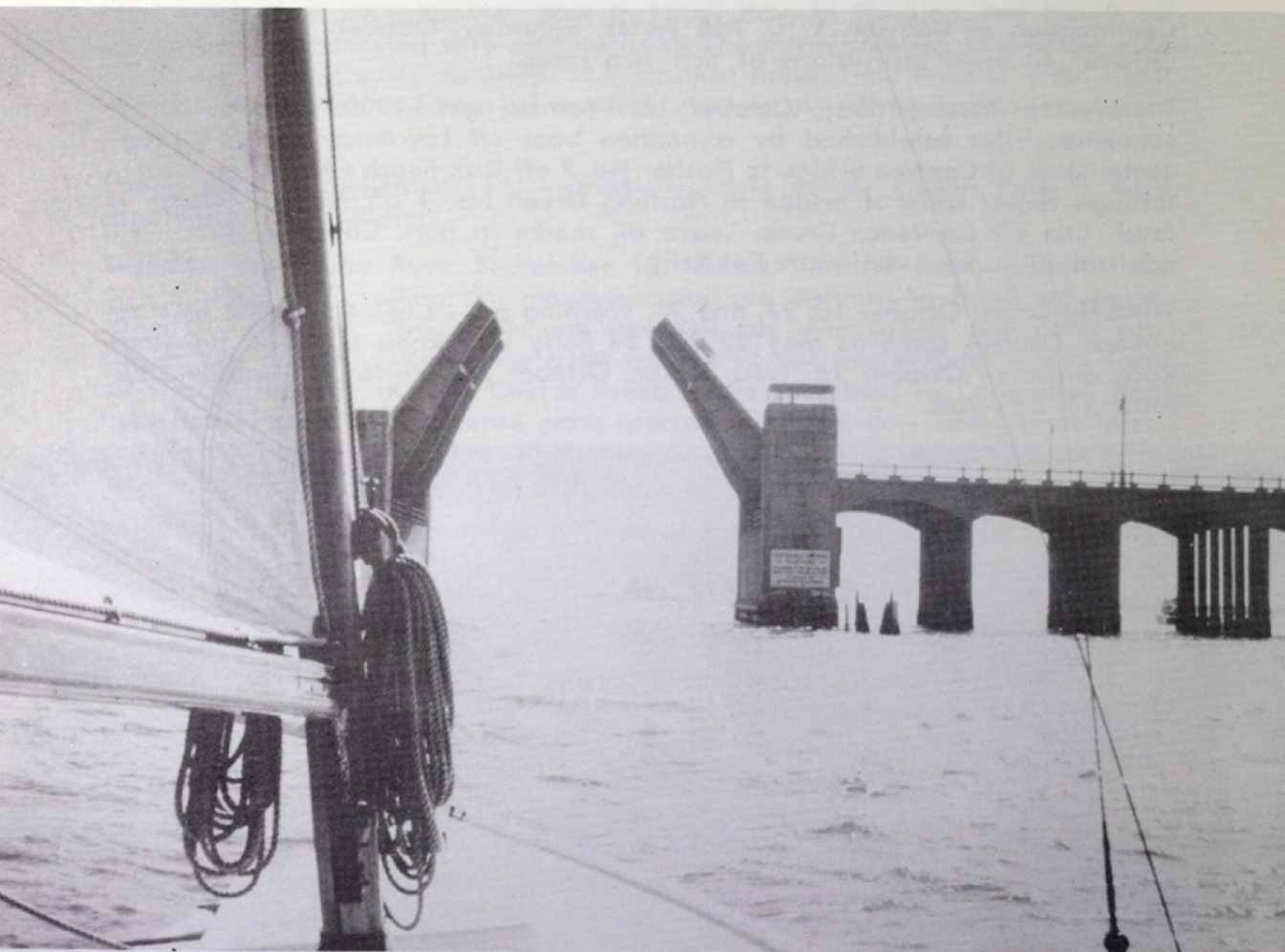
CRUISING INFORMATION 1970

Week-end Cruising

Between the Spring and Fall Cocktail Parties there are 25 weekends. Planned cruising activities will take place somewhere on the Bay on almost every one of them.

Each year we welcome aboard many new members to whom our activities are new and it is to them that the following is directed. The Cruising Guide of the S.B.C.C. has a good deal of information useful to you. It will tell you how to get into the ports and what you will probably do there. What it doesn't tell is on which particular night a wind shift will cause a Chinese Fire Boat Drill in the anchorage; nor, more to the point, will it tell of the fast friendships formed through shared experiences.

For those who choose to attend the scheduled rendezvous, a Committee Boat is listed on the schedule and its skipper may be contacted for further information. This year, the Bay Cruising Trophies (Green Water Awards) will be given to active cruising boats on the basis of log sheets submitted to the Cruising Committee.



The Annual Cruise

Each year more boats attend the annual cruise. Last year we had 65. Aside from the foregathering on Friday night, July 10, at Smith's Point and Great River and the next night at Cormorant Point, no detailed cruise itinerary will be published in this volume.

Instead, skippers' meetings will be held to finalize plans. If this year is like years past, there will be an inside cruise, the so-called "lazy-dazey" cruise, through

Cruising Information (continued)

Shinnecock Canal to Shelter Island and Connecticut ports. One or more groups will go "outside" through Shinnecock Inlet and on to Rhode Island and Massachusetts. Some boats having speed, daring, and time will explore as far as Maine.

A memento of the annual cruise will be given to all participants.

Great River Week

Starting with the West Island Race on Saturday, August 15, the Champagne Breakfast on August 16, the assembled fleet can witness the hectic start and finish of the Character Boat Race. Then six days of racing for those inclined, and beach parties for the non-racers. Evening cook-outs, an auto excursion to the Suffolk Marine Museum, and our own "Razor Clam Chorale" Recital of rip-roaring chanteys are planned. Many club yachts will be cruising the Bay during this week and will rendezvous in the river or the beach to take part in the festivities. The whole week will be climaxed by the Summer Dinner Dance at Land's End.

In addition, the cruising schedule includes:

Two day cruise-racing (September 26 and 27) starting simultaneously from Bayport and Bay Shore with the two fleets converging for the night at Great River and returning to home ports the following day. See race instructions for details.

A Scandinavian Cruise Race on September 12 and an evening sail from Hemlock to Great River on July 4 are popular events repeated this year.

Skippers who make extended offshore cruises are urged to submit logs to the Cruising Committee for consideration for the SBCC's prestigious "Blue Water Award".

RADIO COMMUNICATION

A radio telephone is an equipment every boat should have for safety and to provide intercommunication with other Cruising Club vessels, especially while on the annual cruise.

To avoid difficulties due to low performance, it is suggested that a spring performance check be made by an authorized service man. Because equipment seemed to perform well last year is no assurance it will do so this year. For best performance the check should be made after the boat is in the water.

Radio Contact Periods:

Specific periods of the day have been designated when SBCC vessels should carry on communications with other SBCC vessels. Vessels should endeavor to monitor the calling frequency 2182 KC during these periods. Beginning on Saturday, May 16, 1970 and continuing until Sunday, October 11, 1970 the periods are as follows:

<i>Fridays</i>	<i>Saturdays and Sundays</i>
7:10 p.m.	9:10 a.m.
	12:10 p.m.
	5:10 p.m.
	6:10 p.m.
	8:10 p.m.

Radio Communication (continued)

During good weather on Club sponsored cruises at least a 10-minute radio watch on 2182 KC should be maintained during the following periods:

10:10 a.m. to 10:20 a.m.
1:10 p.m. to 1:20 p.m.
4:10 p.m. to 4:20 p.m.
6:10 p.m. to 6:20 p.m.
8:10 p.m. to 8:20 p.m.

During bad weather, SBCC vessels underway should maintain continuous watch on 2182 KC to be of possible assistance to other vessels.

Radio Contacts:

1. SBCC skippers should review the Federal Communications Commission's Rules and Regulations pertaining to the operation of Marine Radio Telephones. All transmissions should be made in accordance with its booklet entitled "Marine Radio Telephony-Radio Technical Commission for Marine Services".

2. No specific wording to be used when making a call to another vessel is given here but one of the important provisions is that the call should be brief and directed to a specific vessel. The 2182 KC emergency channel may be used in attempting to establish a contact. When this is made both vessels should immediately shift to either the 2638 KC or 2738 KC channel.

3. When attempting to "raise" a vessel make attempts no more frequently than every three minutes.

4. On cruises the need sometimes arises to contact a nearby vessel which is a bit too far away to hail by voice. To alert such a vessel of your desire to communicate by radio, hoist the code flag "H" as a signal to listen on 2738 KC.

5. When making reports to other vessels after safely reaching a destination, radio equipped vessels should include advice about the safe arrival of non-radio equipped vessels to the extent known.

6. Week-end rendezvous committee boats should endeavor to keep a radio watch at the specified contact periods to furnish information about the rendezvous and to be of any assistance.

7. Boats expecting to navigate in outside waters should have a radio direction finder. As in many situations the direction finder is needed out on deck while navigating it is suggested that as a protection from rain and humidity the set be placed inside a loosely fitting plastic bag such as a Glad Bag. The set can be tuned through the plastic cover.

8. If you have no radio telephone but plan to get one for operation on the present low frequencies (2 to 3 MC) it should be purchased and a license registration secured before January 1, 1971. After this date no more low frequency equipments will be licensed by the Federal Communications Commission.

Some SBCC Radio-Equipped Boats

Following are most of the SBCC vessels expected to be equipped with radio telephones during the 1970 season. Owners of vessels equipped but not listed should notify Phil Wainwright (phone AM 4-2571) so that a supplementary listing can be distributed.

Vessel	Call Letters	Owner	Sail No.
Adelaide S.	WX 9024	Philip B. Wainwright	252
Ali Baba III	WZX 3649	William Zajac	312
Alice-Ann	WX 6345	John O. Zimmerman	318
Allegro II	WZT 5530	John Palmaro, Jr.	370
Aloha	WX 5930	Charles Ehlers, Jr.	158
Aries	WT 7130	Paul Schwindt	124
Altair	WI 8553	Harvey Ottenstein	101
Barcarolle	WY 7187	Dr. Morris Goldsmith	203
Beachcomber	WZZ 9612	Bryan Lawrence	Power
Bellwether	WV 2653	Edward S. Smith	332
Bounty	WX 6325	Henry H. Seabrook	202
Chantey	WY 6352	Mark Barton	133
Chantey	WZY 6841	Gilbert L. Haight	
Chasseur	WV 6302	F. Richard Blue, Jr.	Power
Courtesan	WV 9488	John F. Young	1090
Dartoo	W2W 3033	Arthur M. Sternberg	351
Dulcinea	WY 3659	Dr. Bernard Curtis	81
Dulcinea	WO 7455	John D. Woodward	666
Fay-Zee	WF 7094	Charles O. Jackson	Power
Fibre Tigre	WZW 9403	G. Wesley Stone	30
Flicka	WS 8502	Robert E. Stuhler	Power
Flip Flop	WV 2012	Daniel Friedman	Power
Funny Mink	WY 6497	John R. Rieger	1156
Gambry	WL 7372	Jay Lethin	235
Gardaloo	WV 2346	Stuart Baldwin	8
Ghost	WK 2332	Ralph Logan	74
Golden Spur	WH 2420	Livingston Jennings	37
Good-Wind	WL 3773	Harold Goodwin	232
Hildegarde	WO 8375	Fred B. Hard	6
Ichiban	WV 3009	John Kapus	287
Iona	WD 9146	Eric B. Forsyth	1189
Isdon	WE 7399	August Klesick, Jr.	Power
Jan Matt	WS 9700	Vance L. Sailor	153
Kirsty	WZU 6945	Arnold W. Golfman	2521
Lena	WG 8689	Dimitri Stephani	275
—	WT 4068	Boyd C. Max	1
Loon	WZY 8703	Louis H. Orr, Jr.	983
Long Horn	WK 4269	C. Robert Horn	199
Margarita II	WL 3599	Peter Squiccarini	1149

Some SBCC Radio-Equipped Boats (continued)

Mistress	WL 5812	Peter Hilgendorff, Jr.	1843
Morning Star	WK 5269	Hervey G. Smith	18
Nancee II	WY 7185	William F. Bradt	41
North Star	WZV 7477	Fred C. Poppe	Power
Orca	WY 6709	Bud Rosenberg	156
Osprey	WZW 2080	Carl B. Stoye	194
Panacea	WD 9030	John P. Hammes	269
Panacea	WG 6206	Seymour J. Herman	271
Pecoca	WL 4754	Cadman H. Frederick	368
Peregrinator II	WD 6163	Chester D. Phipps	171
Periwinkle	WJ 7854	Joseph F. Hack	16
Puritan	WY 6995	Roger Ramsdell	152
Pyewacket	WB 3675	Warren A. Brey	Power
Rebel VI	WV 7899	Harold Atwood	193
Reliance	WP 7110	Dr. Robert H. Glinick	197
Road Runner	WL 9236	Peter Christensen, Jr.	Power
Scamper	WR 8495	Elliot Saltzman	401
Seafarer	WD 4062	Charles Hakim	Power
Sewan.	WD 4977	Donald G. Lockhart	250
Shelley	WO 4024	Irving H. Herman	466
Skylark	WX 8025	M. Whiting Thayer	45
Southwind	WV 3119	William T. Konz	226
Sport	WJ 2271	Roy A. Duffus, Jr.	Power
Starward	WP 2883	John R. Moore	548
Syren	WE 5759	Judson F. Worden	119
Tally Ho	WS 6782	Gustav A. Moldestad	221
T'ing Hao	WY 2001	William F. Milligan, Jr.	1186
Tranquilizer	WZT 5488	Richard M. Daytz	281
tuxn	WZU 6046	George N. Boulukos	2885
Vela II	WO 2012	Albert E. Rising	182
Venus	WY 3534	Dolf Iurillo	276
Watermelon	WE 3212	Paul S. Rosensweig	668
Widgeon	WE 9645	Frederick A. Becker	22
Wooden World	WT 9663	Don Streit	67

REVIEW OF 1969 ACTIVITIES



Our spacemen traveled a quarter of a million miles to reach the moon—and their elapsed time just about matched the time our skipper took to journey from Smith's Point to Block Island. What exciting times we live in . . . we can find solitude in our sport, in a world that is growing so small that astronauts can encircle it in 90 minutes. Our club's activities remind us, now more than ever, of the hours of pleasure we are privileged to

enjoy in this fast but troubled world. The year just passed was one of unprecedented success for the South Bay Cruising Club. Here is the latest chapter of its activities for the history book.

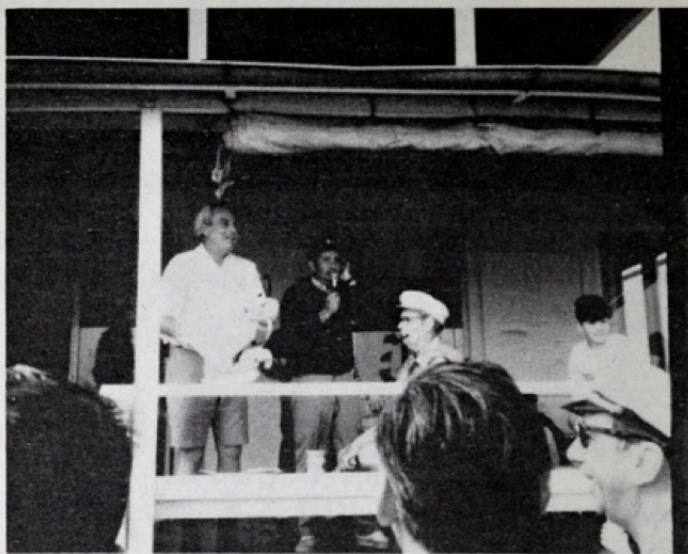
Power boats were allowed to fly the SBCC burgee for the first time, in 1969. It was also the year in which eligible prospective members would be accepted for membership only if they owned a cruising sailboat. Officially, 1969 began with the re-election of Alex Pearson and his flag officers and governors at the January annual meeting at La Grange. The Spring Dinner Dance there in March seemed like the merriest yet.

The first Early Bird spring series, on May 17, was marked with the usual cloudiness and blustery, cool winds that gusted to over 30 knots . . . whitecaps even in the Bayshore Yacht Club cove. Twenty entries for the race, followed by the SBCC spring cocktail party. About eight boats came, including Nancee II, which lost a rudder, and Highland Fling, which lost a centerboard (although Alex didn't know it at the time — he thought he'd trussed it up after the pennant broke). Roger Ramsdell's new Privateer, Puritan, made her debut. Skylark came all the way from New Jersey.

Art Bertapelle's entertainment committee introduced a new feature — an accordionist — which made for a fun noisy crowd, and there was plenty of eats: meatballs, wee weiners, and clam chowder. We heard several say that they intended to start in the Early Bird race today, but they gave up. The four Early Bird spring series races had 68 entries. At the end of the series, 15 boats cruised to Snapper Inn for lobster dinner.

Commissioning Day was preceded by a shakedown cruise on Friday, May 30, in a light SW wind. About 26 boats made the Hemlock rendezvous, including some brand new ones: Art Flynn's and the Ottenstein's Pearson 35's, and Ed Neale's Tartan. Very hot afternoon. Night so clear and dry, and so enchanting with its jumbo size, white, full moon, that everyone stayed on deck until after midnight drinking in the beauty more than the grog. Next day, May 31, a fine, gentle sail to Great River where a big raft gathered (about 25 boats). Polly Bee took a load of teen-agers for a quiet power ride out into the bright moonlight of the wide calm bay. 'Twas like skimming across quicksilver.

With that much activity under our pelts, we were now prepared for Commissioning Day at Babylon Yacht Club. So . . . on June 1, with its gusts to mebbe 30 by early afternoon . . . everyone — or so it seemed — reefed one way or another, sailed to Babylon Y.C. for Commissioning Day and Salty Same Auction. We had 30 boats at dockside while our seasoned auctioneers, Bud Rosenberg and Boyd Max, once again dazzled a hungry crowd and auctioned off \$456.85 worth of junk, with \$54.65 profit to the club.



The Bay Shore Invitation race, on June 7, had the year's most fickle wind . . . first light NW, then lighter NW (or was it N), then S or E . . . anyway, finally, from SW. This race offers racing skipper a good opportunity to observe the committee boat signal which signifies reverse course. Always a well-attended race, and this year we had 35 entries, which represents the fourth largest entry fleet of all the races. Another big rendezvous at Great River that night.

The Narrasketuck Invitation on June 14 broke the spell of previous years . . . this year we enjoyed gentle winds instead of last year's traumatic experiences. Memories of last year's dismasting may have caused many to sit this one out, resulting in only nine entries. The long range weather forecast for this year's (1970) Narrasketuck Invitation is "seasonal." The weatherman made up for it on June 21, the Ladies' Day Race, by having puffy NE and E winds gusting to 28 knots. Not very enticing for our gals—but they showed us! Fifteen boats entered and no less than four had all girl crews!

The Smith Trophy Race, on June 28, sponsored by the Wet Pants Association, encountered some difficulty, with the fleet split in half. Sixteen boats entered. The race was followed by the SBCC's first rendezvous at Watch Hill. The following weekend included the two day race series at Babylon Y.C. and a cruise race to Smith's Point.

Once again the charm and peace of Great River lured the skippers of about 14 boats into remaining there instead of sailing to Smith's Point, as planned . . . but, it turned out to be so blowy in the morning that they said t'hell with it. That evening, the cool breeze made for comfortable viewing of the fireworks from the Islip Raceway area.



The annual cruise started with a muggy, hazy night rendezvous at Smith's Point on Friday, July 11. Moriches Bay lived up to its reputation by providing some groundings. The laughingly anticipated rendezvous, to greet old friends, to meet new cruising families, and to ask their cruise chairmen for instructions, was accomplished in a downpour. Sunday, the inside group, led by Captain Demetri Stephani,

motored to the ginpoles to dismast for the passage through Shinnecock Canal.

With the weather overcast and a northwest wind of 12 knots, the outside group began pulling out at 0700; 33 craft sailed or motored out of Shinnecock Inlet. Some, like Polly Bee and Windjammer, met towering breakers head-on in the inlet, which caused consternation and questions such as "Is it going to be like this all the way to Block Island?" A rogue wave swept one boat, Periwinkle, smashed a mahogany helmsman's seat and doused the engine. (Joe Hack said he got sail up so fast the boat never lost way). The ocean group soon settled on gentle swells and watched the skies darken. Off Montauk Point, the rain dropped the visibility to zero and the wind went to NE. With a head tide and head wind, most craft motored into Block Island by 1800 for well deserved rest and recreation. A rain squall, just as Great Salt Pond was approached, looked more ominous than it turned out to be. Two SBCC boats were towed in by their cruisemates, and at Block Island, two more were found with such damage as a broken fuel line and a broken boom bail. Brisk NE wind at about 2200 broke up a friendly raft. Rained hard during the night.

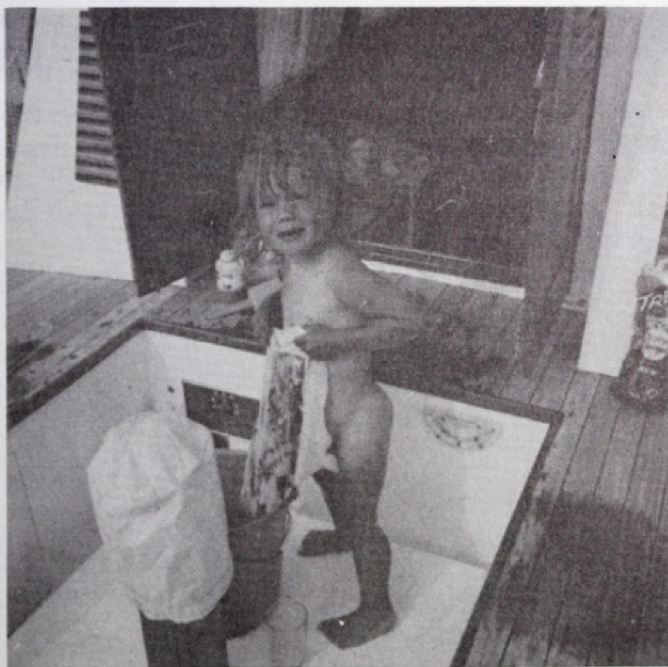
Next day, Monday, some minor repairs to starters and batteries, much drying of gear and sailing of dinks, while most toured the island on foot or by taxi. Block Islanders are proud of their 365 ponds and modern airport. Some natives have never left the island and talk about the 1938 hurricane and World War II ship sinkings as if it were only yesterday.

A calm evening for the long dink rides to Dead Eye Dick's and the traditional SBCC dinner . . . the place was mobbed with our families singing "Happy Birthday" to Marie Macy. After dinner, the fleet planned to split up into three groups with Newport, Martha's Vineyard and Marblehead as destinations.

Meanwhile, the inside group was enjoying the rain in the Peconic and Noyac Bay areas. Actually, your editor has very little info on this leg of the cruise — but then, as once was said: "I can't see and enjoy and writ too." We do know that visits were made to West Neck, Sag Harbor, Three Mile Harbor and Sterling Harbor. Two notable events occurred in Greenport: an enjoyable art show, and a whopping big dinner and an equally whopping big bill at Mitchell's.

For the outside group, the next day, Tuesday, was clear, sunny and with light NE winds. The Martha's Vineyard fleet sailed for Cuttyhunk, had a delightful trip, and arrived at 1600. The crowded anchorage proved to be a bonus for the Canadian geese, which were well fed by the children while the local seaplane had to taxi around swinging sterns to get a clear takeoff. Cuttyhunk was explored and found to have fresh baked bread (Mildred's famous bake shop), big ice cream cones, and a paved road that led to nowhere. A white settlement was on Cuttyhunk long before the Pilgrims landed at Plymouth.

Wednesday morning, July 16, was bright and sunny, but a hard SW wind was still blowing. Some walked across the fragrant moors to the gun emplacements overlooking the rugged northwest coast. Wild roses everywhere . . . roosters crowing . . .



fog blowing across the water, and the Buzzard's horn blowing. With a cold, hard wind still blowing, the group sailed the entire stretch to Hadley Harbor under shortened sail. The seas were confused off Quick's Hole and Robinson's Hole. Hadley so small that not more than four boats could collect in one raft . . . but beautiful, with lots of close-winded little sloops sailing hard among the anchored fleet and very casual about it.

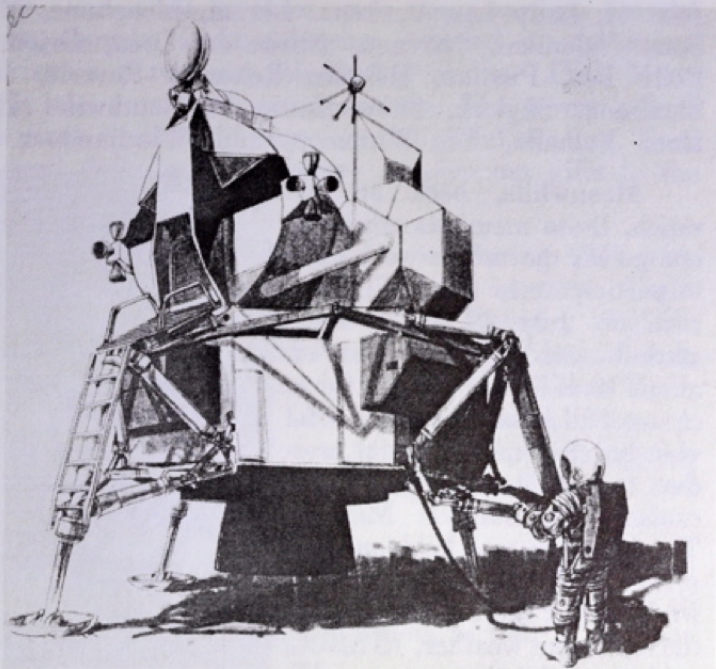
Thursday, several craft put in at Woods Hole for supplies, laundry, and visits to the oceanographic museums. The hot, sunny day led some skippers to the corner saloon's tap beer. Since the time of the rip tide was the all important factor, each skipper chose his own time to make the next passage. Some craft returned to Hadley Harbor, some went to Falmouth, and two remained at Woods Hole.

Friday, a day of wind at calm, poor visibility, due to fog. But with a strong helping tide, most craft motored into Edgartown. The fleet anchored near the big Mystic Whaler, which sailed out majestically and was replaced by the brigantine Shenandoah, her bowsprit swarming with youngsters handling the fores'ls. Great preparations were made for a feast on board the SBCC flotilla. The bumboat (Windjammer) went for ice with a crew of 18, all topside. Dodging the goldplaters anchored in the harbor during the annual Edgartown race week proved to be an interesting feat. After ice loading, sightseeing and watching Ted Kennedy's Winano tying to Windjammer, the group returned to the raft. Joyce Thayer baked a cake and roasted a 20 pound turkey for a big buffet dinner aboard Pilgrim, Skylark, Sea Cloud, Antigua, Flipper, and Polly Bee. The crews of Bonny Lass, Charisma, Puritan and Tern were dinked over. Lots of singing. Edgartown boats put out from shore to see what all the fuss was about. Never before had Edgartown seen such a raft. After the feast, complete with ice cream and liquor, the ancient mariner, Dick Luckner, adorned with an albatross, prophesied strange happenings. An outstanding evening, July 18th!



On Saturday, the fleet chartered its own bus for a tour of Martha's Vineyard, stopped at Oak Bluffs for a ride on the nation's oldest carousel, and visited Menemsha and Gay Head, where a family of Indians served lunch. Back in Edgartown, everyone was talking about Senator Kennedy's driving off the Chappaquidick Bridge.

Sunday, sadly, the fleet headed west, the tide being a strong factor. Many craft enjoyed Menemsha Pond anchorage with its gulls, courteous people, and solitude. Enroute to Menemsha, sailing through rain squalls, listening to the first moon landing, on the radio . . . ringing bells and shouting to passing boats off West Chop: "They're on the moon!" Rainy, windy night at Menemsha, but who cared! One portable TV set aboard Skylark for the kids, another aboard Sea Cloud for the adults; we stayed up far into the night watching the moon landing broadcasts: astronauts setting foot on the moon for the first time. Or-



chestra seats on the cabin sole, balcony seats draped over the main boom, in the rain, and the audience peering down in to the companionway at the TV set.

Monday and Tuesday, the splinter groups picked their ways to Block Island, Point Judith, Fishers Island, Montauk and Shelter Island. Wednesday, a rendezvous at Three-Mile Harbor for a lobster feast attended by yachts from the other cruise areas. The stores were told of all the luck and fortune made up to that time. A flotilla was planned to land at Gardiner's Island to off-load 80 Boy Scouts and their leaders on Thursday. Due to severe NE winds, only Skylark was able to plow into the seas to pick up half of the campers, including Bob Gardiner, complete with pirate treasure of gold, precious stones and artifacts.

Thursday, West Neck was as perfect as ever. A good part of the outside group joined the inside group, and, on Friday, sailed reluctantly before the wind through Peconic Bay, with dismasting and stepping completed by 1600. At Cormorant Point, a glorious rendezvous of returning craft, with weary but happy voyagers telling and retelling the events of the cruise. Saturday was overcast with light breezes . . . most yachts headed west down the Fire Island Inland waterway to their individual destinations.

One cruise log concluded: "It was one of the saltiest, best, annual cruises yet, we thought, even though the weather, on the whole, was rainy and mean."

Despite the unusually damp weather, 65 yachts enjoyed the annual cruise. Some cruised to Narragansett Bay area under the guidance of Captain Hervey E. Smith. The largest group cruised to Cuttyhunk, Martha's Vineyard, and Buzzards Bay. Barcarolle cruised through the Cape Cod Canal to Provincetown, Gloucester, and other ports in that area. Judd Worden was with a group that went to Nantucket. Phil Wainwright singlehanded all the way to Marion, Massachusetts and back.

The 1969 annual cruise souvenir, a nautical mile measurer, was presented to skippers at the annual meeting. The following yachts were on the cruise:

Adelaide S, Aequanimitas, Ali Baba III, Andromeda II, Antigua, Longhorn, Avalon, Awiki II, Barcarolle, Bellwether, Bonny Lass, Broadbill, Charisma, Chippendale, Drifter, Dulcinea, Dulcinea, Eventide, Fancy Free, Fibre Tiger, Flipper, Funny Milk, Good Wind, Highland Fling, High Life, Ichiban, Imp, Isdon, Jan Maat, Joed II, Lady Lou V, Lena, Lorien, Menhune, Merri-Mac, Miss Betty, Morning Star, Nalanikai, Nirvana, Noreaster, Orca, Orion, Pecoca, Periwinkle, Pilgrim, Polly Bee, Puritan, Release, Reliance, Reverie, Rose, Sea Cloud, Sea Tanzer, Shoshana, Skylark, Snow Goose II, Southwind III, Syren, Tamb, Tern, Ting Hao, Valhalla, Vi, Whimsey, and Windjammer.

Meanwhile, back at the ranch, those members who did not go on the cruise were able to participate in the SBCC Bay race on July 19. The race started with a NE wind of about 10 to 15 knots, and, for a change, all hands returned. Obviously, the small turnout was due to activists being on the cruise. The Babylon Mayor's Trophy Race was held on Saturday, July 26, the second week-end of the cruise. Despite the inclement weather, 15 SBCC yachts made the scene. All



sailed under performance handicaps and Mayor Askoff awarded three prizes shortly after the race was over.

Next, we had the Character Boat Race—this is a race by invitation only, and prizes are awarded on the basis of the boat-for-boat race results, and, for the boat with the most character. It's possible that, in the future, the prize for the boat with most character may go to one made of cement.

The West Island race on August 9 had the largest entry — 52 boats, 33 of which were in the ABC classes. We heard that several sails were torn in the warm, 20 knot breeze. The rendezvous which followed in Great River attracted 75 boats for the overnight stay and champagne breakfast next morning. By late morning, most yachts had formed a single raft, to enjoy their visits and champagne. In the afternoon, the wind veered to W and picked up, causing the raft to break up in a flurry of excitement, accompanied by revving of motors and hastily weighed anchors. Smaller rafts of four or five boats were formed.

The SBCC Summer Series occupied a number of racing skippers for the next week and wound up with a luau at Land's End, on Friday, August 15. The luau featured swimming in the pool, before dinner, cocktails all night, gay costumes, dancing, and a real live hula girl for entertainment, hula lessons, and prizes, a Hawaiian dinner, and Hawaiian music all evening.

Eight yachts had a good time in the new Scandinavian Cruise event. Syren was the winner, followed by Orca and Gin. Vi and Nalanik tied for fourth, followed by Stryker, Puritan and God Speed. Yachts were given five points per mile, sailed, and penalized one point per minute that they finished before or after 1700 hours.

The Singlehanded Creepstakes on September 20 had 34 entries. It was brisk E to SE winds up to 30 knots, and many captains came in exhausted from trying to accomplish alone what their wives and children usually do for them. Three hundred twenty dinners of clams, lobster, fried chicken, and watermelon were served . . . the

largest ever. (The number of dinners, not the watermelons). Somebody counted 52 sailing yachts, not including powerboats, which were rafted five deep in places.

The traditional Fall Cocktail Party at Cullen's Boatyard featured an accordionist for some dancing and sing-alongs. The usual trophies were not awarded, but the crowd was as large as ever. Clams, chowder and sandwiches rounded out the enjoyment. This year, the annual Christmas party was reinstated at the LIYC. Many delicious appetizers were made by the entertainment committee. The seven gallons of egg nog plus Judy Goldsmith's piano music made for very delightful evening. Even Santa Claus came by (superbly well done by F. Engerer) to give out gifts to the guests.

Yachts which logged the greatest number of cruise rendezvous during 1969 were presented with Green Water Awards (Revere bowls). The awards went to: Altair, Avalon, Barcarolle, Dulcinea, Godspeed II, Polly Bee, Puritan, Reverie, Skylark, Syren, and Vi. Tankards were presented to: Adelaide S, Andromeda II, Antigua, Ark, Aequanimitas, Bellwether, Bonny Lass, Broadbill, Falcon II, Flighty Mist, Fibre Tiger, Flicka, Flipper, Ghost, Gin, Highland Fling, High Life, Ichiban, Isdon, Memory, Morning Star, Nalanikai, Nirvana, Orca, Outcast, Pecoca, Periwinkle, Pilgrim, Sea Cloud, Southwind III, Stardust, Stryker, Tamb, Tern, Tangarora, Valhalla, and Windjammer.

The Blue Water Award for outstanding cruising achievement in the highest tradition of our Club went to Chet Phipps' Peregrinator, which cruised and race all the way to Isla Mujeres off Yucatan and to New England waters as well . . . an iron man in a wooden boat.

J. Young piloted his Courtesan in the Marblehead—Halifax Race. And, in the fall off soundings, in which 30 boats participated, he got a third in Class A-2.

So ends our 1969 chapter of SBCC activities for the history book. It's been said many times: "Our Club is unique in that it provides something for everyone!"

RACE WINNERS — 1969

(Class, first, second, third place)

Early Bird Race:

ABC Staryker, Watermelon, Salty
Ghost, Bellwether, Kirsty
A Shoshana, Odyssey, La Mamselle

Early Bird Race II:

ABC Red Fox, Windsong
Ghost, Etoile, Venus
A Odyssey, Leprechaun

Early Bird Race III:

ABC Orient Star, Godspeed, Nalani Kai
Ghost, Merry Ann, Falcon
A Broadbill, La Mamselle, Odyssey

Early Bird Race IV:

ABC Orient Star, Flipper, Nalani Kai
Falcon, Ghost, Merry Ann
A Shoshana, Broadbill, Leprechaun

May Shore Invitation:

ABC Sea Tanzer, Banshee, Godspeed
Merry Ann, Gull, T'ing Hao
A Menehune, Odyssey, Broadbill

Marasketuck Invitation:

ABC Merri-Mac, Sandpiper, Godspeed
Ghost
A Shoshana, Odyssey
Winner on overall performance—Shoshana

Girls' Day Race:

ABC Tranquilizer, Orient Star, Banshee
Barcarolle, Ghost, Gull
A Leprechaun, Odyssey, Slim
Broadside Award (all girl crew)—Tranquilizer

Smith Trophy:

A Panacea, Banshee
Ark, Sea Tanzer
Windsong, Orient Star, Interim
Kirsty, Venus
A Odyssey, Shoshana, Phoebe Snow
Overall Winner on Performance—Panacea

Babylon Invitation I:

A Valkyrie, Highland Fling, Flighty Mist
B Nalani Kai, Salty, Judylin
C Lenore
S Falcon, Loon, Nancee II
M Jeannie, Broadbill, Sumaka IV

Babylon Invitation II:

A Sandpiper, Banshee, Flighty Mist
B Winds Rush, Stymie, Salty
S Merry Ann, Falcon, Fiber Tiger
M Broadbill, Jeannie, Leprechaun

BAY RACE

ABC Orient Star, Interim, Flighty Mist
S Merry Ann, Falcon, Ghost
M Manatuck, Phoebe Snow, Kandy Bar

Character Boat Race:

Scrimshaw, Sea Cloud, Lady Lou V
Character Prize: Scrimshaw

West Island Race

A Winds Rush, Circe, Sandpiper
B Ark, Tranquilizer, Salty
C East of Schoodic, Lena, Windsong
S Falcon, Etoile, Merry Ann
M Manatuck, Jeannie, Circe
Deale Trophy: East of Schoodic
Schnurr Trophy: Nirvana

SBCC Summer Series V:

ABC Unicorn, Godspeed, Banshee
S Merry Ann, Falcon, Ghost
M Broadbill, Sumaka IV, Phoebe Snow

SBCC Summer Series VI:

ABC Lenore, Puritan
S Falcon, Nancee, Ghost
M Phoebe Snow, Broadbill, Sumaka IV

Summer Series Overall Scores:

ABC Banshee, Unicorn
S Merry Ann, Falcon, Nancee
M Broadbill, Phoebe Snow

Foulke Trophy:

A 4 C's, Circe, Winds Rush
B Ark, Stymie, Marmanee
C Orient Star, Lena, Interim
S Merry Ann, Barcarolle, Loon
M Odyssey, Godspeed, Shoshana
Foulke Trophy: Merry Ann
Sympatico Trophy: Pilgrim

Commodore's Cup:

A Flighty Mist, Colleen, Sandpiper
B Ark, Puritan
C Orient Star, Windsong
S Barcarolle, Loon, Ghost
M Manatuck, Phoebe Snow, Leprechaun
Commodore's Cup: Barcarolle
Tartan Cup: Manatuck

Ocean Race II:

ABC Orient Star, Watermelon, Flipper
S Merry Ann, Barcarolle, Starward
M Manatuck, Odyssey

Babylon Fall Series I:

ABC Lenore, Salty, Banshee
S Falcon, Merry Ann, Loon
M Broadbill, Slim, Leprechaun

Babylon Fall Series II:

ABC Salty, Banshee, Fat Cat
S Merry Ann, Falcon, Loon
M Broadbill, Circe, Leprechaun

Babylon Fall Series III:

ABC Fat Cat, East of Schoodic, Unicorn
S Falcon, Merry Ann, Loon
M Broadbill, Slim, Leprechaun

Single-Handed Creepstakes:

A Flighty Mist, Winds Rush, Vi
B Ark, Judylin
C Ilona, Happy Talk II, East of Schoodic
S Falcon, Ghost, Barcarolle
M Manatuck, Broadbill, Odyssey

Discoverer's Race:

ABC Tranquilizer, Lorien, Flighty Mist
S Merry Ann, Loon, Allegro II
M Slim, Manatuck, Broadbill

Wind Up Series I:

ABC Sea Dawn, Ark, East of Schoodic
S Merry Ann, Ghost, Venus
M Sumaka IV, Godspeed, Slim

Wind Up Series II:

ABC Winds Rush, Scrimshaw, Ark
S Merry Ann, Starward, Venus
M Odyssey, Godspeed, Slim

Wind Up Series III:

ABC Race protested for lack of proper instructions.
Upheld.
S Merry Ann, Starward, Loon
M Manatuck, Sumaka IV, Slim

Wind Up Series IV:

ABC East of Schoodic, Lady Lou V, Tranquilizer
S Falcon, Merry Ann, Loon
M Broadbill, Slim, Godspeed

SOUTH BAY CRUISING CLUB FLEET — SAILING AUXILIARIES
As of April 1, 1970

No.	Yacht	Owner	Rig	LOA	Designer or Bldr.	Class
1		B. Max	Sloop	38	Morgan	Morgan 38
2	Tondelayo	W. Braddon	Cat	26	Crosby	
4	Reverie	E. Macy	Yawl	40	Cox & Stevens	
6	Hildegarde	F. Hard	Sloop	46	S & S	
7	Katinka Sr.	M. Smith	Yawl	35	Hanley	
8	Gardaloo	S. Baldwin	Ketch	36	Crocker	
10	Teezim Too	F. Zimmerman	Ketch	32	Graves	Dickerson 32
12	Filibuster	W. Brayshaw	Sloop	30	Morgan	Morgan 30
16	Periwinkle	J. Hack	Sloop	36	Hack	P-36
17	Tradewinds	R. Thall	Ketch	32	Munroe	
18	Morning Star	H. G. Smith	Ketch	33	H. G. Smith	
20	Aquila	W. Plauth	Sloop	27	S & S	Tartan 27
21	Chico	F. Braddon	Sloop	26	Crosby	
22	Widgeon	F. Becker	Ketch	32	Graves	Dickerson 32
23	Manana II	F. Holwell	Sloop	22	Delorie	
25	Scrimshaw	P. Callahan	Ketch	26	Monomy Whaleboat	
30	Fibre Tigre	W. Stone	Sloop	31	C & C	Corvette
R30	Querida	R. Dunkerley	Sloop	33	Gil Smith	R Class
31	Star Dust	H. Klesick	Ketch	28	Van Dyke	Bay Mate
32	Pilgrim	J. Berdolt	Ketch	34	Richardson	
34	Semiramis	R. deMurias	Sloop	26	Bergwall	
37	Golden Spur	L. Jennings	Cutter	36	Wells	
39	Vixen	W. Block	Sloop	24		
40	Shrimp	C. Faas	Cat	23		
41	Nancee II	W. Bradt	Sloop	31	Irwin	Irwin 31
45	Skylark	W. Thayer	Ketch	40	Thayer	Motor Sailer
49	Sparkling Waters II	R. Pasch	Sloop	30	Morgan	
51	Judylin	R. Brown	Sloop	22	S & S	Kestrel
52	Halcyon	R. Davis	Sloop	21	Crosby	Mallard
53	Lady Lou V	J. Beinert	Cat	22	Sweisguth	
54	Cutty Sark	N. Norton	Ketch	36	Mower	Bay Interclub
59	Snow Goose II	R. Garben	Sloop	35	McLear-Harris	Sea Breeze
60	Marion K II	C. Bernichon	Yawl	32	Alden	
R61	Elbo	R. D. Schultz	Sloop	30	Gil Smith	R Class
62	Slim	H. Hamstra	Sloop	27	S & S	Tartan 27
63	Arabesque	W. Brady	Ketch	34	Dickerson	Simplissima
64	Decatur	R. Schafer	Ketch	34	Van Dyke	
65	Dutch Maid	D. Holsclaw	Cutter	22	White	
66	Dragoneer	R. Wissman	Ketch	30	Wissman	Viking
67	Wooden World II	D. Streit	Ketch	36	Crocker	Sea Dawn
68	Memory	F. Heess	Sloop	33	Rhodes	Swiftsure
71	Broadbill	W. Simonson	Sloop	27	S & S	Tartan 27
72	Bobcat	R. Roth	Cat	17		
73	Antigua	F. Gauch	Ketch	33	H. G. Smith	
74	Ghost	R. Logan	Sloop	36	Creekmore	Creekmore 36
75	Athena	F. Pallas	Sloop	24		Viking
77	Charisma	R. Parker	Sloop	24	Coble	Corsair
78	Highland Fling	Pearson	Sloop	27	S & S	Tartan 27
81	Dulcinea	B. Curtis	Sloop	35	McLear-Harris	Sea Breeze 35
82		J. Mackston	Sloop	23		Viking
83	Winds Rush	P. Rhodes	Yawl	34	H. G. Smith	
84	Extra Dry	J. Davies	Sloop	24	Davies	Monomoy
87	Betty	P. Ketcham	Sloop	18	Ketcham	
89	Patty Wagon	D. Wood	Sloop	31	Irwin	Irwin 31
90	Kraker Barrel	J. Kraker	Cat	22	Crosby	
91	Miss Gwen	R. H. Schultz	Sloop	25	Shaw	Commander
92	Fat Cat	G. Giffords	Cat	19	Witholz	Cat
93	Whimsey	E. Wimmerstedt	Yawl	28	Wimmerstedt	
94	Unity	J. Titterington	Sloop	25	Hamlin	Amphibicon 25
95	Stymie	R. Simes	Sloop	24	Wayfarer	Islander 24
96	Valhalla	B. Kleisler	Sloop	28	Borodoimpeks	Valkyrie
97	Windsong	B. Rawlings	Sloop	22		Tyler 22

South Bay Cruising Club Fleet (Continued)

No.	Yacht	Owner	Rig	LOA	Designer or Bldr.	Class
98	Grayling	H. Glover	Cat	22	Anderson	
100	Caliban	R. Ellner	Sloop	26	Alberg	Aerial
101	Altair	H. Ottenstein	Sloop	35	Shaw	Pearson 35
102	Jeanie	T. Hangarter	Sloop	24	Lapworth	Cal 24
103	Keewatin	P. Roeser	Yawl	36	Mower	
104	Avenger II	B. Thole	Sloop	26	Tripp	Polaris
105	Glass Slipper	P. Reiser	Sloop	24	Tyler	Tylercraft
106	Brandy	R. Paterson	Ketch	27	Royal Navy	
107	Horizon	F. Atwood	Ketch	45	Wiley	Motor Sailer
108	Evader	G. Seaman	Sloop	28	Crosby	Tern
109	Diana	N. Spiess	Sloop	28	McGregor	
110	Teal	J. Baker	Sloop	28		Holiday Victor
111	Polly Bee	J. Ryan	Ketch	34	Dickerson	Simplissima
112	Marela II	W. Gibson	Sloop	28		Holiday
113	Ruth II	H. Gottwald	Ketch	35	Dickerson	Dickerson 35
114	Sea Rover	T. Hanaway	Cat	26		
115	Idlewile	F. Wile	Sloop	25	Hamlin	Amphibicon
116	Staryker	D. McPherson	Sloop	26	Tripp	Polaris
117	East of Schoodic	D. Keough	Sloop	26	Hamlin	Controversy 26
118	Magic	D. McClure	Sharpie	36	Chapelle	
119	Syren	J. Worden	Sloop	34	Morgan	Morgan 34
120	Lorna Doone	L. Van Nostrand	Sloop	33	S & S	
121	Anache	P. Savoca	Cutter	27		
122	Chance	G. Merry	Ketch	26	Monomy Whaler	
123	Ark	G. Walsh	Sloop	30	Garden	Valkyrie
124	Aries	P. Schwindt	Sloop	33	Rhodes	Swiftsure
125	Vi	A. Yaxis	Ketch	28	Herreshoff	H-28
126	Tim-De-Rin II	P. Stark	Yawl	29	Alberg	Triton
127	Wanderlust II	R. Holzmacher	Sloop	23	S & S	Olympic
128	Fledermaus	F. Miles	Sloop	26	Tripp	Polaris
129	Moon Beam	F. Hard Jr.	Sloop	21	Herreshoff	Fish
130	Windblown	H. Jonas	Ketch	35	Dickerson	Dickerson 35
131	Mood Indigo	J. Brunning	Sloop	31	C & C	Corvette
132	Eventide	E. Nielsen	Ketch	28	Herreshoff	H-28
133	Chantey	M. Barton	Yawl	33	Glander	Tavana
134	Windjammer	H. Horn	Ketch	28		
135	Majapez	A. Zanetti	Sloop	31	Irwin	Irwin 31
136	Sea Tanzer	F. Engerer	Ketch	31	Gilmer	Privateer
137	Oriana	G. Lamdin	Yawl	32	C. Hunt	Melody
138	Dorothy V	E. Vilander	Sloop	23	Schneider	Pennant
139	Sea Cloud	R. Luckner	Ketch	35	Chapelle	Bugeye
140	Gannet	E. Malinka	Sloop	20	Kaufman	Signet 20
141	Soicette II	T. Bolger	Sloop	23	Ted Herman	
142	Nor'Easter	R. Boyd	Yawl	34	Mower	
143	Seadawn	D. Greatsinger	Ketch	36	Crocker	Seadawn
144	Winky II	B. Hesse	Sloop	20	Brodoupeks	
145	Hydra	R. Carey	Sloop	26	S & S	New Horizons
146	Joy Sea	M. Brass	Sloop	24	Irwin	Irwin 24
147	Windbag	W. Warm	Sloop	23	S & S	Kestrel
148	Valkyrie	E. Farrell	Sloop	29	Garden	Valkyrie
149	Guppy	J. Sartain	Sloop	20	Kaufman	Signet 20
150	Viking	A. Spollen	Sloop	26	Bloess	
151	Horizons	J. Caliri	Sloop	27	Crosby	
152	Puritan	R. Ramsdell	Ketch	30	Gilmer	Privateer
153	Jan Matt	V. Sailor	Sloop	30	Dekker	Dutch Maid
154	Fun	R. Love	Sloop	23	Ketcham	
155	Peggy	J. Regan	Cat	37	G. Smith	
156	Orca	B. Rosenberg	Sloop	36	Alden	Zephyr
157	MacFinn	R. Korhonen	Sloop	30		Holiday
158	Aloha	C. Ehlers	Yawl	35	Alden	
159	Vagabond	H. Luke	Ketch	30	Hanna	Tahiti
160	Curfew	T. Elwell	Sloop	35	Hand	
161	Snorri	A. Abrahamson	Cutter	31	Wiley	
162	Lorien	E. Buyer	Sloop	34	Morgan	Morgan 34

South Bay Cruising Club Fleet (Continued)

No.	Yacht	Owner	Rig	LOA	Designer or Bldr.	Class
163	Three Belles	J. Morris	Sloop	24	Piver	Nugget Trimaran
164	Makaira	G. Carter	Sloop	20		Signet 20
165	Shoshana	S. Ladd	Sloop	35	Morgan	Morgan 35
166	Pequod	R. Angliss	Cat	21		Cape Cod Cat
167	Lively Lady	M. S. Fleming	Yawl	40	H. Johnson	
168	Neptune	J. Tegans	Sloop	26		
169	Tangaroa	R. Brunnen	Ketch	33	H. G. Smith	
170	Awiki II	R. Wendt	Sloop	28	McCarthy	Soverel 28
171	Peregrinator II	C. Phipps	Sloop	30	Wittholz	
172	A-Head	H. Schiff	Sloop	23	S & S	Kestrel
173	Rose, The	E. Jennings	Sloop	24		Columbia Contender
174	Deliana	W. Symons	Ketch	35		Trimaran
176	Manx	R. Dunlop	Cat	22	Sweisguth	
177	Lodestar	W. Stevens	Ketch	35	Piver	Trimaran
178	Southwind	G. W. Bell	Sloop	26	Concordia	
179	Pied Piper	C. Hamlin	Sloop	27	Hamlin	Pied Piper
180	West Wind	M. Griffiths	Sloop	23	Hamlin	Whistler
181	Ondine	W. Clarke	Sloop	26	Hamlin	Amphibicon
182	Vela II	A. Rising	Sloop	30	Shaw	Wanderer
183	Release	R. Webb	Sloop	31	C & C	Corvette
184	Sea Chantey	I. Polk	Sloop	28	Soverel	Soverel 28
185	Drifter	B. Spivack	Sloop	24		Viking
186	Dail	W. Dreher	Sloop	22	Pearson	Pearson 22
187	Orion	J. Alloy	Sloop	30	Langanberg	
188	Alma K	E. Wall	Sloop	22	Westerley	Nomad
189	Chippendale	D. Metcalf	Sloop	22	Hermann	H20
190	Aequanimitas	J. Canning	Sloop	30	Shaw	Pearson 300
191	Bear	G. Benedict	Gaff Sloop	24	Paige	Cat
192	Strega	P. D'Agrosa	Ketch	28	Herreshoff	H-28
193	Rebel VI	H. Atwood	Ketch	35		Dickerson 35
194	Osprey	C. Stoye	Sloop	31	C & C	Corvette
195		J. A. Wirth	Sloop	26	Tripp	Polaris
196	Spoondrift	W. Batty	Sloop	37		Friendship
197	Reliance	R. Glinick	Sloop	30	Shaw	Wanderer
199	Long Horn	C. Horn	Sloop	38	Morgan	Morgan 38
200	Wish	F. Jones	Sloop	21	Baltzer	Quoddy
201	North Star	K. Shoemaker	Sloop	28	Sunden	Kings Cruiser
202	HHS Bounty	H. Seabrook	Ketch	36	Bellenger	
203	Barcarolle	M. Goldsmith	Sloop	41	Morgan	Morgan 41
205	Mai Tai	A. McGeary	Sloop	22	Alberg	Sea Sprite
206	Aeolus	E. Shipman	Sloop	22		Sea Witch
207	Valkyrie	L. S. Cyr	Sloop	30	Garden	Valkyrie
208	Whisper	F. Schneider	Sloop	26	Luders	L-16
209	Caprice	W. Podesta	Sloop	23		
210	The Hollandia	J. Pless	Sloop	23	Alberg	Electra
211	Bonny Lass	R. Thomson	Sloop	27	S & S	Tartan 27
212	Steady Eddy	H. Wilburger	Sloop	23		Viking
213	Cricket	M. McLeod	Sloop	24	Tyler	Tylcraft
214	Tia Maria	T. Cohill	Ketch	28	Alden	
215	Liebchen	J. Perry	Sloop	30	Vodopiza Ivasreko	Valkyrie
217	Chief, The	R. S. Davison	Sloop	27	Crocker	
219	Red Baron	C. Kaiser	Sloop	30	Brennan	Easterly 30
220	Merry Ann	W. Cook	Sloop	30	Morgan	Morgan 30
221	Tally Ho	G. Moldestad	Sloop	29	Pearson	Triton

South Bay Cruising Club Fleet (Continued)

No.	Yacht	Owner	Rig	LOA	Designer or Bldr.	Class
222	Utopia	D. Zimmer	Sloop	34	Morgan	Morgan 34
223	Tiki	J. W. Livingston	Sloop	26	Tripp	Polaris
224	Lady Lynn	K. Kondor	Sloop	25	Coble	Corsair
225	Ilona	G. Evans	Sloop	28	Holiday	
226	Southwind III	W. Konz	Sloop	34	Morgan	Morgan 34
227	Tomahawk	G. Schoen	Sloop	25		
228	Dixie	J. Boyajian	Sloop	26	Rhodes	Meridian
230	Blue Turtle	W. Steinhard	Sloop	18		Book
231	Nirvana	J. Saxe	Sloop	26	Tripp	Polaris
232	Good Wind	H. Goodwin	Sloop	31	Morgan	Columbia 31
233	Valkyrie	A. Webb	Sloop	23	Sailing USA	Viking
234	Ladybugs	W. Cummins	Sloop	24	Farrell	Duet
235	Gambry	J. Lethin	Sloop	27	S & S	Tartan 27
236	Here I Am	C. Abrams	Sloop	22	Pearson	Electra
237	Tern	R. Williams	Sloop	24	Morgan	Morgan 24
238	Nalani Kai	J. French	Sloop	24	S & S	Dolphin
239	Menehune	D. Gardner	Sloop	24	O'Day	Dolphin
240	Quincy Rose	Alfred Nelson	Sloop	23	Crosby	Osprey
241	Sea Dream	B. Cooper	Sloop	23	Carlson	Harbor Gull
242	Falcon II	A. Heckel	Sloop	30	Shaw	Wanderer
243	Happiness Is	N. Heckel	Sloop	22	S & S	Sailmaster
244	Wind Quest	M. Vincel	Sloop	24	Nilrop	Kingfisher 20
245	Alley Cat	A. Salazar	Cat	24		
247	Follow Me Two	R. Campbell	Sloop	25	Coble	Corsair
249	Procyon	C. H. Eiser, Jr.	Sloop	23	Alberg	South Coast
250	Sewan	D. Lockhart	Sloop	36	Hack	Periwinkle
251	Carina	T. McClone	Sloop	20	Alberg	Corinthian
252	Adelaide S.	P. Wainwright	Sloop	24	Mallet	
253	Opus IV	A. J. Deming	Sloop	24	Farrell	Duet
255	Ruthless	D. Thomas	Sloop	26	Thames Marine	Snapdragon 26
257	Happy Talk Too	R. Allyn	Sloop	28	Sunden	Kings Cruiser
258	Jabberwock II	D. Weiss	Sloop	24	Tyler	Tylercraft
264	Avalon	A. Flynn	Sloop	35	Shaw	Pearson 35
265	Dolce Fa Niente	L. Dobkin	Sloop	21		Viking
266	Queen E	J. C. Reilly	Sloop	31	C & C	Corvette
267	Patience	P. DeSaix	Sloop	26		
268	Teal	S. Goldsmith	Cat	23	Crosby	
269	Panacea	J. Hammes	Ketch	19	Hammes	
270	Marmanee	W. Lorence	Sloop	22	S & S	Kestrel
271	Panacea	S. Herman	Sloop	28	McCarthy	Soverel 28
272	Lazy Eight	J. Nolan-Hoagland	Sloop	26	Tripp	Polaris
273	Mouse	R. Le Sauvage	Sloop	16		
274	Unicorn	L. Casey	Sloop	22	Alberg	Electra
275	Lena	D. Stephani	Ketch	26	Stephani	
276	Venus	D. Iurillo	Sloop	33	Rhodes	Swiftsure
277	Sumaka IV	F. Eggerstedt	Sloop	27	S & S	Tartan 27
278	Mele Kai	Palmer	Yawl	27	S & S	Tartan 27
279	Windsong	A. Bertapelle	Sloop	30	Creekmore	Creekmore 30
280	High Life	G. Miller	Sloop	30	Creekmore	Creekmore 30
281	Tranquilizer	R. Daytz	Sloop	31	C & C	Corvette
282	Tovarich	R. Scheuing	Sloop	28	Alberg	Triton
286	Barbara	L. Wexler	Sloop	22	Alberg	Ensign
287	Ichiban	J. Kapus	Sloop	30	Shaw	Wanderer
288	Scrimshaw	H. Kahn	Sloop	25	Crosby	Wianno Sr.

South Bay Cruising Club Fleet (Continued)

No.	Yacht	Owner	Rig	LOA	Designer or Bldr.	Class
290	Kandy Bar	W. Dwyer	Sloop	25	C & C	Red Line 25
292	Feather	T. E. Dauch, Jr.	Sloop	24	Cobles	Corsair
299	Sea Fever	E. Henkel	Sloop	30	Morgan	Morgan 30
300	Merri Mac	B. MacGill	Sloop	24		Corsair
301	Sea Gull	W. Matthews	Sloop	22	Herman	Herman 20
302	Gypsy III	L. Lieb	Sloop	25		Westerly 25
303	Fury	M. W. Teta	Sloop	23	True	Rocket
304	Irish Mist	G. Buetow	Sloop	27	S & S	Tartan 27
309	Bahama Mama	R. Kersey	Sloop	19	Rhodes	Mariner
311	Terry II	E. Becker	Sloop	28		Holiday
312	Ali Baba III	W. Zajac	Sloop	30	Pearson	Wanderer
318	Alice Ann	J. Zimmerman	Yawl	45	Creekmore	Creekmore 45
320	Jolie Madame	G. Whisenhunt	Sloop	31	C & C	Corvette
322	Leprechaun	H. Post	Sloop	28	Alberg	Triton
330	Pangerbane	A. Edwin	Sloop	20	Hurley Marine	
332	Bellwether	E. S. Smith	Sloop	30	Shaw	Wanderer
333	Banshee	P. Kelly	Sloop	24		Greenwich 24
335	Colleen	F. Horn	Sloop	27	Irwin	Irwin 27
340	Djinn	W. Strecker	Sloop	22	S & S	Sailmaster 22
344	All Aloan	R. Ernst	Sloop	27		Bristol 27
347	Onda	J. Crowe	Sloop	27	S & S	Tartan 27
351	Dartoo	A. Sternberg	Sloop	26	Wells	Snapdragon
357	Joed II	M. Feldman	Sloop	23	S & S	Kestrel
360	Circe	C. Hayward & J. Sheffield	Sloop	28	Herreshoff	H-28
368	Pecoca	C. Frederick	Sloop	30	Shaw	Wanderer
369	Andromeda II	R. Reid	Sloop	35	Shaw	Pearson 35
370	Allegro II	J. Palmaro	Sloop	37	McCurdy & Rhodes	Knutson 37
379	Comet	R. A. Wirth	Sloop	22	Morgan	
395	Is II	G. Hildebrand	Sloop	25	Coble	Corsair
400	Finesse	W. Applegate	Sloop	25	Morgan	Morgan 25
411	4 C's	C. Carpenter	Sloop	24		West Wind
414	Trinket	J. W. Millard	Sloop	24	Ted Hood	West Wind
421	Godspeed II	E. Neale, Jr.	Sloop	27	S & S	Tartan 27
427	Mirage	W. Tauby	Sloop	20	Alberg	Corinthian
450	Sandpiper	R. Nehring	Sloop	34	Alden	
452	Sea Gypsy	C. Mignerey	Sloop	27	S & S	Tartan 27
466	Shelley	I. Herman	Sloop	28	Alberg	Triton
469	Magic Dragon	D. Milne	Sloop	24	Irwin	Irwin 24
548	Starward	J. Moore	Yawl	40	Tripp	Block Is. 40
557	Miss Betty	W. Menger	Sloop	29	Kinney	
661	Whimbrel	J. Goodale	Sloop	19	Rhodes	Mariner
665	Deirdre-L	H. McTeague	Sloop	28	Alberg	Triton
666	Dulcinea	J. Woodward	Sloop	30	Shaw	Wanderer
668	Watermelon	P. Rosensweig	Sloop	33	Rhodes	Swiftsure
802	Gull	S. Rague	Sloop	34	Morgan	Morgan 34
813	Honey	J. Wight	Cat	18	Marshall	
844	Imp	M. Taylor	Sloop	25	Wesco	Coronado 25
930	Odyssey	J. Crimaldi	Sloop	27	S & S	Tartan 27
983	Loon	L. Orr	Sloop	33	Rhodes	Swiftsure
1036	Whistler	H. Tilden	Sloop	36	Rhodes	Whistler
1090	Courtesan	J. Young	Yawl	43	Cuthbertson	
1126	Lenore	M. Greenbaum	Sloop	22	S & S	Kestrel
1142	Red Fox	E. Ricketts	Sloop	24	Tavata	

South Bay Cruising Club Fleet (Continued)

No.	Yacht	Owner	Rig	LOA	Designer or Bldr.	Class
1149	Magharita II	P. Squicciarini	Sloop	26	Rhodes	Meridan
1156	Funny Mink	J. Rieger	Ketch	32	Graves	Dickerson 32
1189	Iona	E. R. Forsyth	Sloop	35	KOK	Amuthon 35
1223	Frolic	R. D. Schultz	Sloop	24	Morgan	Morgan 24
1258	Chiripa	R. de Murias	Sloop	35	McClear/Harris	Seabreeze 35
1271	Gin	R. Seidenspinner	Sloop	33	Rhodes	Swiftsure
1320	Wind Song	R. Peterson	Sloop	20	Alberg	Corinthian
1441	Orient Star	W. Casazza	Ketch	30		
1676	Cobe du Vent	R. Hunt	Yawl	28	Alberg	Triton
1843	Mistress	H. Hilgendorff	Sloop	36	Lapworth	Cal 36
1886	T'ing Hao	W. Milligan	Yawl	37	McCarthy	Soverel 36
1887	Pinkletink IV	A. Flowers	Sloop	35	Allied	Sea Breeze
2020	Golden Days	M. Silbert	Sloop	26	Sailstar	Courier
2097	Black Hawk III	P. Saccio	Yawl	40	Tripp	Bermuda 40
2420	Whisper	D. Brown	Sloop	30	Morgan	Morgan 30
2521	Kirsty	A. Golfman	Sloop	30	Shaw	Wanderer
2540	Scamper	E. Saltzman	Sloop	25	Hamlin	Amphibicon
2790	Legend	F. Taussig	Yawl	35	McLear-Harris	Sea Breeze
2823	Flighty Mist	H. Colleran	Sloop	35	Shaw	Pearson 35
2885	tuxn	G. Boulukos	Sloop	40	Morgan	Columbia 40
2904	Manatuck	E. Reardon	Sloop	27	S & S	Tartan
3688	Phoebe Snow	C. Ferenbach	Sloop	28	Soverel Marine	Soverel 28
3884	Dove	S. Greene	Sloop	43	S & S	P. J. 43



MEMBERS — South Bay Cruising Club — as of April 1, 1970

Member	Wife's Name	Address	Yacht No.
Abrahamsen, Arthur N.		Carman Boulevard	Brookhaven 161
Abrams, Charles F.	Jean	P. O. Box 291	Syosset 236
Allen, Robert S.	Jean	151 South Windsor Avenue	Brightwaters Pwr.
Alloy, John A.	Lois	224 Secatogue Lane	West Islip 187
Allyn, Robert	Doris	124 Washington Street	Freeport 257
Andrews, Clifford	Barbara	8 Park Circle	E. Farmingdale Pwr.
Angliss, Robert J.	Phyllis	178 So. Bayview Avenue	Amityville 166
Applegate, William H.	Barbara	30 Marion Place	Massapequa 400
Atwood, Frederick L.	Elizabeth	272 Ocean Avenue	Islip 107
Atwood, Harold O.	Charlotte	71 Bayside Place	Amityville 193
Baker, John M.		Beaverdam Road	Brookhaven 110
Baker, Seward J.	Ruth	254 Melbury Road	Babylon
Baldwin, G. Gorton	Florence	84 West Islip Road	West Islip
Baldwin, G. Gorton, Jr.	Sarah Lee	188 West Islip Road	West Islip Pwr.
Baldwin, Stuart	Sarah	164 Columbia Heights	Brooklyn 8
Baroni, Anthony E.		47 Phipps Avenue	East Rockaway
Barton, Mark Q.	Lois	30 Colonial Drive	East Patchogue 133
Batty, Walter H.	Vi	15 Sumpwams Place	Babylon 196
Baxter, Arthur E.	Anita	28 Shore Road	Babylon Pwr.
Becker, David C.	Doris	27 Lawrence Lane	Bay Shore
Becker, Edwin M.	Terry	20 Christopher Court	Babylon 311
Becker, Frederic A.	Pat	64 Cormack Court	Babylon 22
Beinert, John D.	Helen	32 Robert Street	Babylon 53
Bell, G. Warren	Ethel	136 S. Penataquit Avenue	Bay Shore 178
Benedict, George E.	Joan	122 Colton Avenue	Sayville 191
Berdolt, John P.	Margaret	20 West Islip Road	West Islip 32
Berliner, Dr. Stanley D.	Marion	41 Nassau Drive	Great Neck
Bernichon, Clay	Marion	98 Sequams Lane West	West Islip 60
Bertapelle, Arthur H.	Fran	25 Leaside Drive	Great River 279
Block, Winthrop R.		299 Middletown Avenue	Wethersfield, Conn. 39
Bloodgood, Freeman	Rose	154 Cedar Lane	Babylon
Blue, F. Richard		153 Eaton Lane	West Islip
Blue, F. Richard, Jr.	Ann	27 Trask Lane	Babylon Pwr.
Blumenstetter, Aloysius	Amanda	81 Laurel Hill Road	Northport Pwr.
Boettger, Macklin	Maureen	123 Araca Road	Babylon
Bolger, Thomas W.	Alice	8 Dahill Road	Old Bethpage 141
Boulukos, George N.	Kathy	862 So. Grove Street	Freeport 2885
Boyajian, John	Dixie	51 Bay Way Avenue	Bay Shore 228
Boyd, Richard F.	Fran	57 South Bay Avenue	Islip 142
Bracco, William	Mildred	28 Burnage Lane	Babylon Pwr.
Braddon, Fred	Evelyn	70 Village Line Road	Babylon 21
Braddon, William B.	Dutch	Pamoqua Lane	West Islip 2
Bradt, William F.	Penny	179 Sequams Lane	West Islip 41
Brady, Warren B.	Mel	Mattituck Hills	Mattituck 63
Brass, Melvin J.	Joyce	62 Craig Road	Islip Terrace 146
Brayshaw, W. S.	Ruth	100 Peninsula Drive	Babylon 12
Brey, Warren	Dorothy	10 Sutton Court	West Islip Pwr.
Brooks, Owen E.	Marilyn	70 Grand Central Avenue	Amityville
Brown, Donald P.	Robin	12 Livingston Road	Bellport 2420
Brown, Elmo Pope	Madeline	4 Hollins Lane	East Islip
Brown, Richard E.	Dot	118 Sequams Lane Center	West Islip 51

MEMBERS — South Bay Cruising Club — (continued)

Member	Wife's Name	Address		Yacht No.
Brunnen, Ronald R.	Edna	26 Woodlawn Avenue	Oakdale	169
Brunning, John	Ruth	180 Anchorage Drive	West Islip	131
Buetow, Dr. Gerald W.	Ann	169 Secatogue Lane West	West Islip	304
Buyer, Edward M.	Marilyn	74 Oak Road	Bayport	162
Cain, William C.	Gloria	1310 Nashville Avenue	New Orleans, La.	
Caliri, Joseph L.	Dorothy	24 Davison Lane, West	West Islip	151
Callahan, Paul	Ginny	850 East Bay Drive	West Islip	25
Campbell, Robert W.	Ardith	66 Greenhills Road	South Huntington	247
Canning, John A., M.D.	Pearle	117 So. Fairview Avenue	Bayport	190
Carey, Robert C.	Anne	1 Grace Court	Brooklyn	145
Carl, Robert W., Jr.		Box 99	East Islip	Pwr.
Carpenter, Charles	Milly	90 Elm Street	Sayville	411
Carter, George R.	Hazel	Lopez Drive	West Hempstead	164
Casazza, Warren	Virginia	121 Concourse West	Brightwaters	1441
Casey, Louis H.	Marion	382 Central Park West	New York, N. Y.	274
Chandler, Richard R.	Mary	20 Wenman Avenue	Bay Shore	Pwr.
Christensen, Peter J., Jr.	Wilma	45 Lighthouse Road	Babylon	Pwr.
Clarke, William P. O., Jr.	Gene	47 Norfolk Lane	Glen Cove	181
Cohill, Thomas W.	Toni	113 Bennett Place	Amityville	214
Colleran, Harry J.	Marilyn	31 Cutter Court	West Islip	2823
Cook, William H.	Mary Ann	45 Elder Road	Islip	220
Cooper, Bernard	Grace	115 Taylor Avenue	Roosevelt	241
Cox, George R.	Emma	Box 225	Brookhaven	
Crimaldi, John A.	Louise	108 Drake Court	West Islip	930
Crowe, John E.	Lee	54 Swan Drive	Massapequa	347
Cummins, William R.	Karen	22 Myrtle Avenue	Keyport, N. J.	234
Curtis, Bernard M., M.D.	Barbara	1538 Earl Road	Wantagh	81
Cyr, Larry S.		55 Franklin Place	Oceanside, N. Y.	207
Darnell, John D.	Jo	116 Peninsula Drive	Babylon	218
Dauch, Thomas E., Jr.	Janet	45 Evelyn Road	West Islip	292
Davies, Julien T., Jr.	Janet	45 Montrose Avenue	Babylon	84
Davis, Raymond, Jr.		28 Bergen Lane	Blue Point	52
Davison, Don W.	Marjorie	16 Lewis Circle	Babylon	Pwr.
Davison, Russell S., Jr.	Jeanne	5 Atlantic Avenue	East Rockaway	217
Daytz, Richard M.	Sheila	12 Larkspur Drive	West Islip	281
Deale, Mrs. Florence R.		16 Stuart Avenue	Babylon	
Deale, William H., Jr.	Jeanette	16 Stuart Avenue	Babylon	Pwr.
D'Agrosa, Peter D.	Barbara	75 West Lane	Sayville	192
deMurias, Ramon	Carlin	74 Douglas Avenue	Babylon	1258
DeSaix, Pierre	Margery	906 Hudson Street	Hoboken, N. J.	267
Dobkin, Lloyd	Betty	80 Bennett Place	Amityville	265
Deming, A. Jay	Gail	104 Euclid Avenue	Massapequa	253
Dreher, Warren F.	Dail	967 Gardiner Drive	Bay Shore	186
Duffus, Roy A., Jr.	Phyllis	7 Swartwout Place	Amityville	Pwr.
Dunkerley, Roger B.	Patricia	46 Cleveland Avenue	Sayville	R30
Dunlop, Robert F.	Peggy	82 Sequams Lane, West	West Islip	176
Dwyer, William J.	Barbara	73 Elder Road	Islip	290
Edwin, Arthur	Joyce	89 Irmisch Avenue	Lindenhurst	330
Eggerstedt, Fred C., Jr.	Ethel	8 Davison Lane	West Islip	277
Ehlers, Charles H., Jr.	Mildred	365 Stewart Avenue	Garden City	158
Eiser, Carl H., Jr.	Bunny	597 Everdell Avenue	West Islip	249

MEMBERS — South Bay Cruising Club — (continued)

Member	Wife's Name	Address		Yacht No.
Ellner, J. Robert		500 East 83rd Street	New York, N. Y.	100
Elwell, Tom	Peg	711 Gregory Place	Riverhead	160
Engerer, Frederick O.	Avalon	140 Roxbury Avenue	Oakdale	136
Ernst, Robert S.	Dorothy	26 Haymaker Lane	Levittown	344
Evans, George H.	Janet	196 Peninsula Drive	Babylon	225
Faas, Charles W., Jr.	Marie	84 Eaton Lane	West Islip	40
Farrell, Edward E.	Pete	504 Avon Place	West Islip	148
Feldman, Martin H.	Dorothy	340 Eastwood Road	Woodmere	357
Ferenbach, Colin C.	Hannah		Point O'Woods	3688
Fishel, Laurence		41 Eaton Lane	West Islip	
Fleming, Malcolm J.	Marion	25 Academy Lane	Bellport	Pwr.
Fleming, Malcolm S.	Donna	12 Frog Lane	Oakdale	167
Flowers, Adolphus	Rose	22 Matilda Court	Bayport	1887
Flynn, Arthur J.	Betty	4 Neptune Place	Massapequa	264
Forman, Robert S.	Jacqueline	33 Trask Lane	Babylon	
Forsyth, Eric B.	Edith	Bond Lane	Brookhaven	
Frederick, Cadman H.	Peep	117 Handsome Avenue	Sayville	368
French, Joe F.	Betty	509 Corbin Place	West Islip	238
Friedman, Daniel	Loyce	5 Bradish Lane	Bay Shore	Pwr.
Garben, Robert L.	Marguerite	RFD No. 6, Dix Hills	Huntington	59
Gardner, Donald W.	Elizabeth	141 No. Brewster Lane	Bellport	239
Gauch, Frederick, Jr.	June	11 Connetquot Drive	Oakdale	73
Gibson, Walter H.	Jessie	97 Sequams Lane East	West Islip	112
Giffords, Gene	Sandy	206 Pennsylvania Avenue	Island Park	92
Glaseroff, Dr. Daniel	Celentha	105 West Conklin Street	Farmingdale	
Glinick, Dr. Robert H.	Norma	811 Main Street	Islip	197
Glover, Herbert B., Jr.	Carol	28 Kingsland Place	Babylon	98
Goldsmith, Morris	Judith	25 Fairwater Avenue	Massapequa	203
Goldsmith, S. L., Jr.	Beatrice	3 Peter Cooper Road	New York, N. Y.	268
Golfman, Dr. Arnold W.	Christina	308 Woodland Drive	Brightwaters	2521
Goodale, James O.	Ruth	281 Bayview Avenue	Massapequa	661
Goodwin, Harold E.	Betty	154 Greystone Road	Rockville Centre	232
Gottwald, Heinz W.	Ruth	175 Peninsula Drive	Babylon	113
Greatsinger, Dayton H.	Helen	41 Lake Drive South	West Islip	143
Greenbaum, Murray L.	Lenore	25 Sunset Boulevard	Massapequa	1126
Greene, Stewart	Iris	1815 Heritage Way	Manhasset	3884
Gregory, Robert H.	Evie	9 Pembroke Road	Darien, Conn.	
Griffiths, Millard F.	Jessica	55 Sequams Lane West	West Islip	180
Grover, Hon. James R.	Mary	185 Woodsome Road	Babylon	
Hack, Alfred G.	Jane	Oak Neck Lane	West Islip	
Hack, Joseph		260 East Shore Drive	Massapequa	16
Haight, Gilbert L.	Dot	216 Ocean Avenue	Amityville	
Hakim, Charles	Hildegarde	123 Peninsula Drive	Babylon	Pwr.
Hamlin, Cyrus	Jean	18 Dane Street	Kennebunk, Me.	179
Hammes, John P.	Catherine	387 Clock Boulevard	Amityville	269
Hamstra, J. Howard	Elizabeth	1 Harbour Road	Babylon	62
Hanaway, Thomas	Nan	56 Kingsland Place	Babylon	114
Hangarter, Theodore, M.D.	Judy	300 Willets Lane	West Islip	102
Hard, Frederick B.	Hildegarde	87 South Saxon Avenue	Bay Shore	6
Hard, Frederick B., Jr.	Gretchen	24 Mowbray Avenue	Bay Shore	129
Harris, Daniel S., Jr.	Eleanor	118 Elder Road	Islip	Pwr.

MEMBERS — South Bay Cruising Club — (continued)

Member	Wife's Name	Address		Yacht No.
Hayward, Charles	Betty	278 Fire Island Avenue	Babylon	360
Heckel, Alfred H.	Joan	183 West Islip Road	West Islip	242
Heckel, Nancy J.		403 Massapequa Avenue	Massapequa	243
Hess, Fred A.	Mary Elizabeth	9 Harbour Road	Babylon	68
Henderson, David	Ann	53 Araca Road	Babylon	
Henkel, Edward E.	Florence	Widgeon Court	Great River	299
Henry, Patrick	Terry	43 Thompson Avenue	Babylon	
Herman, Irving H.		401 Broadway	New York, N. Y.	466
Herman, Seymour J.	Doris	146 Island Parkway	Island Park	271
Hesse, Burt L.	Mary Ellen	31 Mahan Road	Old Bethpage	144
Heymann, Walter R.	Hilda	91 South Clinton Avenue	Bay Shore	
Hildreth, Hon. Pierson R.	Kathryn	2655 Calves Neck Road	Southold	69
Hilgendorff, Hugo A., Jr.	Alice	21 Boylan Lane	Blue Point	1843
Hoagland, Melvin R., Jr.	Arlene	92 Drake Court	West Islip	272
Holland, Sydney G.		25 Caledonia Avenue	Babylon	
Holsclaw, Donald V.	Mary Lou	50 Kingsland Place	Babylon	65
Holwell, F. S.	Doris	88 Purdy Lane	Amityville	23
Holzmacher, Robert G.	Ardith	176 Peninsula Drive	Babylon	
Horn, C. Robert	Harriet	9 Western Concourse	Amityville	199
Horn, Frederick L.	Bobby	401 Greene Avenue	Sayville	335
Horn, Herbert E.	Gae	25 Nancy Drive	Sayville	134
Howell, Elmer B.	Suzanne	29 Gardner Lane	Bay Shore	
Howell, Rogers	Mary	20 Dorset Lane	Babylon	Pwr.
Hunt, Robert G. M.	Audrey	53, Route 306	Suffern, N. Y.	1676
Iurillo, Dolf	Mary Lee	34 Belton Road	Babylon	276
Jawans, Robert C.	Allene	32 West Lane, O'Co-Nee	Bay Shore	
Jackson, Charles O.	Fay	8 Meadow Farm Road	East Islip	Pwr.
Jennings, Dr. Eugene, Jr.	Mims	503 Devon Place	West Islip	173
Jennings, Livingston S.		5 Boston Post Road	East Lyme, Conn.	37
Jensen, Borge	Catherine	802 14th Street	West Babylon	
Johnson, Edward S.	Betty	256 Denton Avenue	Lynbrook	
Jonas, Harry	Ruth	62 West 14th Street	New York, N. Y.	130
Jones, Frank R.	Claire	165 Candee Avenue	Sayville	200
Kahler, Carl H.	Sally	288 McConnell Avenue	Bayport	
Kahn, Hans	Lilli	83-83 118th Street	Kew Gardens	288
Kaiser, Edmund A.	Grace	160 Franklin Road	Oakdale	219
Kapus, John K.	Louise	55 Brockmeyer Drive	Massapequa	287
Kelly, Miss Patricia		64 Mowbray Avenue	Bay Shore	333
Kent, Richard P., Jr.	Dot	125 South Merrick Avenue	Merrick	
Keough, J. David	Victoria	214 Tahlulah Lane	West Islip	117
Kersey, Roger C.	Betty	164 Grand Central Avenue	Amityville	309
Ketcham, Hayden F.	Billie	32 Church Lane	West Islip	
Ketcham, Paul	Muriel	62 New Point Place	Amityville	87
Kimmel, C. Robert	Maria	Meadow Farm Road	East Islip	
Kleisler, W. Bruce	Kathleen	22 Cockonoe Avenue	Babylon	96
Klesick, August	Eileen	51 Barberry Court	Amityville	Pwr.
Klesick, Harry N.	Cathy	72 Lighthouse Road	Babylon	31
Knox, H. Berkeley	Eleanor	27 Sumpwams Place	Babylon	
Kondor, Kenneth A.	Lynn	102 Jackson Avenue	Rockville Centre	224
		596 Broadway	Lynbrook	
Konz, William T.	Eunice	122 South Brush Drive	Valley Stream	226

MEMBERS — South Bay Cruising Club — (continued)

Member	Wife's Name	Address		Yacht No.
Korhonen, Reino O.	Lillian	33 Prentice Road	Levittown	157
Kraker, John	Anita	75 Strong Avenue	Babylon	90
Ladd, Dr. Saul	Rosalie	513 Devon Place	West Islip	165
Lamdin, N. Gist, Jr.	Betty	41 Sequams Lane, East	West Islip	137
Larmor, Joseph D.		18 West Lane	Bay Shore	
Lawrence, Bryan	Sue	1 Virginia Road	Babylon	Pwr.
Lawrence, Robert T.	Shirley	87 West Islip Road	West Islip	Pwr.
Lethin, Jay E.	Maria	99 Lighthouse Road	Babylon	235
LeSavage, Rollins	Gerry	62 Oak Street	Babylon	273
Lieb, Leonard	Dorothy	12 Wenwood Drive	Massapequa Park	302
Livingston, J. Warner	Elizabeth	Box 477	Great River	223
Lockhart, Donald G.	Bette Ann	Montgomery Lane	Bay Shore	250
Logan, Ralph W.	Norma	28 Secatogue Lane, East	West Islip	74
Lorence, William A.	Joan	130 Wampum Lane	West Islip	270
Love, Robert A.	Jody	38 Bellport Lane	Bellport	154
Luckner, Richard P., III	Helen	36 Burnage Lane	Babylon	139
Luke, Dr. Harry B.	June	Pilgrim State Hospital	W. Brentwood	159
Lyons, Frank G.	Jeanne	117 Greenlawn Road	Huntington	Pwr.
MacDonald, Morgan B., Jr.	Sally	38 Kingsland Place	Babylon	
MacGill, Bruce E.	Ethel	39 Stuart Avenue	Amityville	300
Mackston, Jack	Sandra	90 Curley Street	Long Beach	82
Macy, Edward	Marie	15 Unqua Place	Amityville	4
Malinka, Edward J.	Irene	97 South Ketcham Avenue	Amityville	140
Mann, Miss Paula		152 Tahlulah Lane	West Islip	
Matthews, William J.	Carol	336 No. Allegheny Avenue	Lindenhurst	301
Max, Boyd C.	Dottie	11 Clearwater Avenue	Massapequa	1
McClone, Thomas A., Jr.	Chris	80 Wavecrest Avenue	West Islip	251
McClure, Dean	Joan	30 Bethune Street	New York, N. Y.	118
McGeary, Austin J.	Bobbi	240 Middle Road	Blue Point	205
McGeehan, John R.	Marilyn	161 Wampum Lane	West Islip	Pwr.
McLeod, Milton K.	Barbara	Orowoc Landing	Islip	213
McPherson, David L.	Grace	19 Montrose Avenue	Babylon	116
McTeague, Hugh		12 Wilson Avenue	Amityville	665
Menger, William M.	Beryl	416 Fire Island Avenue	Babylon	557
Merry, George A.	Lois	61 New Point Place	Amityville	122
Metcalfe, David M.	Audrey	43 West 93 Street	New York, N. Y.	189
Mignerey, Charles A.	Helen	38 Gladstone Avenue	West Islip	452
Miles, Francis T.	Binky	4 Shore Road	Bellport	128
Miligi, Raymond, Jr.	Lucille	122 Tahlulah Lane	West Islip	
Millard, J. Wallace	Esther	47 LeBrun Avenue	Amityville	414
Miller, Edward E.	Jacqueline	27 Little East Neck Road So.	Babylon	
Miller, Glenn	Rita	65 North Boulevard	East Rockaway	280
Milligan, William F., Jr.	Priscilla	479 Smith Avenue	Islip	1886
Milne, Douglas D.	Dorothy	256 Sequams Lane	West Islip	469
Moldestad, Gus A.	Tudy	98 Wagstaff Lane	West Islip	221
Moore, John R.	Marie Ann	140 Cadman Avenue	Babylon	548
Morch, William	Mary	227 West Islip Road	West Islip	
Morris, John H.	Marian	48 So. Montgomery Avenue	Bay Shore	163
Myers, Munn D.	Connie	7 Cumberland Path	Setauket	
Neale, Edmund, Sr.	Winifred	1384 East Fork Road	Bay Shore	Pwr.
Neale, Edmund J., Jr.	Janet			421

MEMBERS — South Bay Cruising Club — (continued)

Member	Wife's Name	Address		Yacht No.
Nehring, Richard C.	Jinie	163 Clock Boulevard	Amityville	450
Nelson, Alfred	Alice	Beaverdam Road	Brookhaven	240
Nelson, Arthur B.		3417 Manchester Road	Wantagh	Pwr.
Nielsen, Einer A.	Agnes	P. O. Box 203, Valley Road	Stony Brook	132
Nolan, James A.		251 Willetts Lane	West Islip	272
Norton, John M.		19 Irving Road	Amity Harbor	
Norton, Nathaniel	Helen	230 Seaman Avenue	Bayport	54
Oglesby, C. Scott	Grace	120 Massapequa Avenue	Massapequa	
Orr, Louis H., Jr.	Libby	40 Sequams Lane East	West Islip	983
O'Shea, J. Vincent, Jr.	Helen	13 North Carll Avenue	Babylon	
Ottenstein, Harvey	Sandy	2391 Legion Street	Bellmore	101
Pallas, Frederick	Adele	60 Everett Street	Patchogue	75
Palmaro, John, Jr.		175 South Broadway	Lindenhurst	370
Palmer, Winslow	Marion	68 Lucinda Drive	Babylon	278
Parker, Rev. Richard S.	Grace	22 Slate Hill Drive	Poughkeepsie	77
Pasch, Robert	Fran	42 Dundee Avenue	Babylon	49
Paterson, Charlotte R.		165 Annuskemunnica Road	Babylon	Pwr.
Paterson, Robert L.	Maggie	43 Cormack Court	Babylon	106
Pearson, Alex	Ann	6 Flower Hill Lane	Bay Shore	78
Peck, Eugene W.	Eleanor	9 Montrose Avenue	Babylon	Pwr.
Perry, Jack R.	Joan	78 Gillette Avenue	Sayville	215
Peterson, Ronald B.	Jean	344 Seville Boulevard	Sayville	1320
Petry, Raymond B.	Betty Jeane	175 Cedar Avenue	Rockville Centre	
Phipps, Chester D.	Dorothy	1891 North Grand Avenue	Baldwin	171
Plauth, William H.	Esther	19 Hildreth Court	Amityville	20
Pless, John A.	Helene	St. Mark's Lane	Islip	210
Podesta, William F.	Jeanne	255 So. Little E. Neck Road	Babylon	209
Polk, Irving	Natalie	236 Jayne Avenue	Patchogue	184
Poppe, Fred C.	Inez	133 Tahlulah Lane	West Islip	Pwr.
Post, Henry A. V.	Molly	42 Dorset Lane	Babylon	322
Rague, Sanford	Joan	21 Deering Wood Lane	Babylon	802
Ramsdell, Roger G., Jr.		28 Walnut Avenue	Rockville Centre	152
Rawlings, Bernard W.	Cecile Elaine	355 Kilburn Road So.	Garden City	97
Reardon, Eugene M.		31 West Lane	Bay Shore	2904
Regan, John J.	Peggy	3 Chase Lane	Sayville	155
Reid, Ralph A.	Joan	16 Amboy Road	Oakdale	369
Reilly, James C.	Ethel	92 Johnson Avenue	Sayville	266
Reiser, Paul H.	Marie	77 Stillwater Avenue	Massapequa	105
Rhodes, Peter	Helen	6 Christopher Court	Babylon	83
Ricketts, Edward M.	Grace	47 Dundee Avenue	Babylon	1142
Rieger, John R.	Dore	138 Anchorage Drive	West Islip	1156
Rising, Albert E., Jr.	Niel	103 West Concourse	Brightwaters	182
Robb, Arthur T.	Peggy	210 Wallace Street	Freeport	
Roesser, George	Anne	30 Browns Lane	Bellport	103
Rosenberg, Bud	Harriet	34 Secatogue Lane East	West Islip	156
Rosensweig, Paul S.		40 E. 34th Street	New York, N. Y.	668
Ross, Wallace C.	Ann	13 Academy Lane	Bellport	
Roth, Robert A.	Aileen	72 Montgomery Avenue	Bay Shore	72
Ruppe, Dr. John P., Jr.	Rosetta	48 Lawrence Lane	Bay Shore	
Ryan, Jack R.	Peggy	206 Woodsome Road	Babylon	111
Saccio, Archie F.	Lilyan	141 Wampum Lane	West Islip	

MEMBERS — South Bay Cruising Club — (continued)

Member	Wife's Name	Address		Yacht No.
Saccio, Philip W.		141 Wampum Lane	West Islip	2097
Sailor, Vance L.	Marguerite	100 Durkee Lane	East Patchogue	153
Salazar, Alfred M.	Helen	251 Tahlulah Lane	West Islip	245
Saltzman, Elliot	Natalie	95 Reid Avenue	Port Washington	2540
Sands, Frederick W., Jr.	Jeanne	8 Tompkins Avenue	Babylon	
Sartain, Judson B.	Irene	250 Belmont Parkway	Hempstead	149
Savoca, Paul		58 Saxon Avenue South	Bay Shore	121
Saxe, John R.	Kathleen	16 Elder Road	Islip	231
Schafer, Robert W.	Nonette	172 West Islip Road	West Islip	64
Scheuing, Richard A.	Doris	37 Quaker Path	Cold Spring Harbor	282
Schiff, Howard M.	Muriel	15 Hemlock Drive	Roslyn	172
Schneider, Fred	Frances	218 Mosher Avenue	Woodmere	208
Schoen, Gerard H.	Peg	3514 Colony Drive	Baldwin	227
Schultz, Robert D.	Vi	1 Eastgate Drive	Sayville	1223
Schultz, Russell H.	Doris	249 Shady Brook Lane	West Islip	91
Schwindt, Paul	Molly	240 West 11 Street	New York, N. Y.	124
Seabrook, Henry H.	Dot	36 Branch Avenue	Freeport	202
Seaman, Gordon L.	Teddi	71 Willow Avenue	Islip	108
Searby, Harold W.	Ruth-Jeanne	West Meadow Road	Setauket	
Seidenberg, Everett	Teddy	61 South Carll Avenue	Babylon	Pwr.
Seidenspinner, Ralph	Pat	185 Secatogue Lane West	West Islip	1271
Shaw, Skip	Dot	549 South Green Avenue	Lindenhurst	
Sheffield, Jerry	Kay	22 Neelen Drive	Wyckoff, N. J.	360
Shipman, Ernest	Claire	151 East Palisade Avenue	Englewood, N. J.	206
Shoemaker, Kensel	Bev	14 Ketcham Avenue	Amityville	121
Silbert, Dr. Mitchell	Shirley	16 Highwater Avenue	Massapequa	2020
Simes, Robert F.	Ann	247 Tahlulah Lane	West Islip	95
Simonson, William H.	Liz	122 Wagstaff Lane	West Islip	71
Smith, Dr. Edward S.	Kitty	229 Snedecor Avenue	Bayport	332
Smith, Hervey G.	Elsie	76 Hampton Street	Sayville	18
Smith, Merritt	Janet	169 Sequams Lane Center	West Islip	7
Spieß, Newton E.	Dess	46 Fernwood Avenue	Oakdale	109
Spivack, Boris M.	Lois	84 Handsome Avenue	Sayville	185
Spollen, Arthur J.	Marguerite	17 Guildford Park Drive	West Babylon	150
Squicciarini, Peter	Margaret	19 Kwebler Street	Blue Point	1149
Stark, Dr. Paul J.		264 East Shore Drive	Massapequa	126
Stechert, Fred	Nancy	182 Hope Street, N.W.	Marietta, Ga.	
Steinhard, Walter		25 Wigtel Lane	Bellport	230
Stephani, Dmitri	Helen	174 Sears Road	West Islip	275
Sternberg, Arthur M., M.D.	Marilyn	7 Richmond Road	Rockville Centre	351
Stevens, Walter B.	Marianne	230 West 79th Street	New York, N. Y.	177
Stone, G. Wesley	Hildegarde	501 Devon Place	West Islip	30
Stoye, Carl B.	Grace	41 No. Ocean Avenue	Bayport	194
Strecker, William V.	Bernice	10 Larkspur Drive	West Islip	340
Streit, Donald D.	Phyllis	49 Brown's Lane	Bellport	67
Stuhler, Robert E.	June	22 Brightwater Place	Massapequa	Pwr.
Symons, William	Ricki	312 South Clock Boulevard	Amityville	174
Tauby, William C.	Lynn	12 Po Lane	Hicksville	427
Taussig, F. F.	Julie	35 Jones Road	Englewood, N. J.	2790
Taylor, Marvin	Muriel	18 Thorpe Lane	Plainview	175
Tegins, John M.	Mary Alice	15 Woodcliff Road	Great River	168

MEMBERS — South Bay Cruising Club — (continued)

Member	Wife's Name	Address	Yacht No.
Teta, W. Michael	Virginia	414 Deer Park Avenue	Babylon 303
Thall, Richard	Vera	273 North Windsor Avenue	Brightwaters 17
Thayer, M. Whiting	Joyce	33 Wardell Circle	Oceanport, N. J. 45
Thole, Bruce W.	Ilse	117 LeBrun Avenue	Amityville 104
Thomas, David	Ruth	56 Lakeland Avenue	Sayville 255
Thomas, William T.	Nancy	75 Stillwater Avenue	Massapequa Pwr.
Thomson, Robert C.	Marcia	61 Ocean Avenue	Amityville 211
Tilden, Henry G.	Ruth	48 Foster Lane	Babylon 1036
Titterington, John S.	Ann	14 Bailey Avenue	Babylon 94
Trumble, Richard W.	Lucile	15 Dorset Lane	Babylon
Underhill, Thomas	Katie	14 White Birch Drive	Babylon
Van Nostrand, LeRoy	Peggy	76 Towne Street	Amityville 120
Vilander, Everett L.	Dorothy	4 Prescott Street	Garden City 138
Vincel, Michael R., Jr.	Mildred	130 Willowood Drive	Wantagh 244
Voso, Charles A.	Marguerite	114 Peninsula Drive	Babylon Pwr.
Wainwright, Philip B.	Lydia	6 Braham Avenue	Amityville 252
Wall, Einar F.	Margaret	37 Bayview Lane	Amityville 188
Walsh, George F.	Joyce	35 Tide Court	Oakdale 123
Wanser, Frank E.	Betty	19 White Birch Drive	Babylon Pwr.
Warm, William F.	Leidy	68 Stuart Avenue	Amityville 147
Webb, Alan F.	Elizabeth	Box 369	Southampton 233
Webb, Robert G.	Dorothy	63 Wingra Avenue	Rutherford, N. J. 183
Weiss, Daniel	Annabelle	75 Irmisch Avenue	Lindenhurst 258
Wendt, Robert L.	Ruth	1 Hillcrest Lane	Woodbury 170
Wexler, Leonard D.	Barbara	810 Main Street	Islip 286
Whisenhunt, Gene L.	Jeannie	2 Buoy Lane	West Islip 320
Wieda, Alfred	Flo	186 Clock Boulevard	Amityville
Wight, John		29 Gilgo Beach	Babylon 813
		Winter: Box 58	Wantagh
Wilburger, Harry W.	Edna	1162 Tulsa Street	Uniondale 212
Wile, Fred D.		536 West 111th St., Apt. 75	New York, N. Y. 115
Wilensky, Harold T.	Ada	95 Shore Road	Manhasset
Williams, Richard S.	Mary Charles	8 Raeburn Court	Babylon 237
Wills, Richard	Anna Mae	24 Smith Street	Babylon Pwr.
Wimmerstedt, Edward C.	Eleanor	848 East Bay Drive	West Islip 93
Winter, Warren F.	Marilyn	2 Christopher Court	Babylon Pwr.
Wirth, John A.		316 So. Bayview Avenue	Amityville 195
Wirth, Robert A.	Mary	46 Swan Drive	Massapequa 379
Wishart, Ronald S.		4047 South 7th, Apt. 3	Abilene, Texas
Wissmann, Robert	Charlotte	41 Cutter Place	Babylon 66
Wood, David, Jr.	Pat	26 Secatogue Lane East	West Islip 89
Woodward, John D.	Nona	7 Neptune Place	Massapequa 666
Worden, Judson F.	Phyllis	14 Robin Lane	Levittown 119
Wragge, John B.	Caroline	27 Bayview Lane	Amityville
Yaxis, Alexander G.	Vi	29 Hamilton Street	Amityville 125
Young, John F.	Jenni	106 West Islip Road	West Islip 1090
Zajac, William	Alice	158 Franklin Road	Oakdale 312
Zanetti, Alex	Matina	64 Lucinda Drive	Babylon 135
Zimmer, Donald J.	Laurette	3470 Homestead Avenue	Wantagh 222
Zimmerman, Fred	Barbara	10 Sequams Lane North	West Islip 10
Zimmerman, John O.	Alice	138 Ocean Avenue	Amityville 318

MEMBERS' ZIP CODES

Abilene, Texas 79605
Amity Harbor and Amityville 11701
Babylon 11702
Baldwin 11510
Bayport 11705
Bay Shore 11706
Bayside 11360
Bellmore 11710
Bellport 11713
Blue Point 11715
Brentwood 11717
Brightwaters 11718
Brookhaven 11719
Cold Spring Harbor 11724
Darien, Conn. 06820
East Farmingdale 11735
East Islip 11730
East Lyme, Conn. 06333
East Patchogue 11772
East Rockaway 11518
Englewood, N. J. 07631
Farmingdale 11735
Freeport 11520
Garden City 11530
Glen Cove 11542
Glen Head 11545
Great Neck 11020
Great River 11739
Hempstead 11550
Hicksville 11801
Hoboken, N. J. 07030
Huntington 11743
Island Park 11558
Islip 11751
Islip Terrace 11752
Kennebunk, Me. 04043
Kew Gardens 11415
Keyport, N. J. 07735
Levittown 11756
Lindenhurst 11757
Long Beach 11561
Lynbrook 11563
Manhasset 11030
Marietta, Ga. 30060
Massapequa 11758
Massapequa Park 11762
Mattituck 11952
Merrick 11566
New Orleans, La. 70115
North Bellmore 11710
North Haven, Conn. 06473
Northport 11768
Oakdale 11769
Oceanport, N. J. 07757
Oceanside 11572
Old Bethpage 11804
Patchogue 11772
Plainview 11803
Point O'Woods 11775
Port Washington 11050
Poughkeepsie 12603
Richmond Hill 11419
Riverhead 11901
Rockville Centre 11570
Roosevelt 11575
Roslyn 11576
Rutherford, N. J. 07070
Sayville 11782
Setauket 11785
South Huntington 11746
Southampton 11968
Southold 11971
Stony Brook 11790
Suffern 10901
Summit, N. J. 07901
Uniondale 11553
Valley Stream 11580
Wantagh 11793
West Babylon 11703
West Brentwood 11717
West Brookhaven 11719
West Hempstead 11552
West Islip 11795
Wethersfield, Conn. 06109
Woodbury 11797
Woodmere 11598
Wyckoff, N. J. 07481

Members' Yachts Alphabetically — Including Power Vessels

Adelaide S.	252	Wainwright	Curfew	160	Elwell
Aeolus	206	Shipman	Cutty Sark	54	N. Norton
Aequanimitas	190	Channing			
A-Head	172	Schiff	Dail	186	Dreher
Ali Baba III	312	Zajac	Damnation	Power	G. Baldwin
Alice Ann	318	J. Zimmerman	Dartoo	351	Sternberg
All Aloan	344	Ernst	Decatur	64	Schafer
Allegro II	370	Palmaro	Deirdre-L	665	McTeague
Alley Cat	245	Salazar	Deliana	174	Symons
Alma K	188	Wall	Diana	109	Spies
Aloha	158	Ehlers	Dixie	228	Boyajian
Altair	101	Ottenstein	Djinn	340	Strecker
Anache	121	Savoca	Dolce Fa Niente	265	Dobkin
Andromeda II	369	Reid	Dorothy V	138	Vilander
Antigua	73	Gauch	Dove	3884	Greene
Aquila	20	Plauth	Down the Hatch	Power	Harris
Arabesque	63	Brady	Dragoneer	66	Wissman
Aries	124	Schwindt	Drifter	185	Spivack
Ark	123	Walsh	Dulcinea	81	Curtis
Athena	75	Pallas	Dulcinea	666	Woodward
Avalon	264	Flynn	Dutch Maid	65	Holsclaw
Avenger II	104	Thole			
Awiki II	170	Wendt			
			East of Schoodic	117	Keough
Bahama Mama	309	Kersey	Elbo	R61	R. D. Schultz
Banshee	333	Kelly	Evader	108	Seaman
Barbara	286	Wexler	Evaine	200	Jones
Barcarolle	203	M. Goldsmith	Eventide	132	Nielsen
Beachcomber	Power	B. Lawrence	Extra Dry	84	Davies
Bear	191	Benedict			
Bellwether	332	E. Smith	Falcon	242	A. Heckel
Bess	Power	Chandler	Fay-Zee	Power	Jackson
Betty	87	P. Ketcham	Feather	292	Dauch
Big Dipper	Power	Paterson	Fibre Tigre	30	Stone
Black Hawk III	2097	Saccio	Filibuster	12	Brayshaw
Blue Turtle	230	Steinhard	Finesse	400	Applegate
Bobcat	72	Roth	Fledermaus	128	Miles
Bonnie Lassie	Power	Baxter	Flicka	Power	Stuhler
Bonny Lass	211	Thomson	Flighty Mist	2823	Colleran
Brandy	106	R. Paterson	Flip Flop	Power	Friedman
Broadbill	71	Simonson	Follow Me, Two	247	Campbell
			Four C's	411	Carpenter
Caliban	100	Ellner	Frolic	1223	R. D. Schultz
Calyпсо	216	Kimmel	Fun	154	Love
Caprice	209	Podesta	Funny Mink	1156	Rieger
Carina	251	McClone	Fury	303	Teta
Chance	122	Merry			
Chantey	133	Barton	Gambry	235	Lethin
Chantey		Haight	Gannet	140	Malinka
Charisma	77	Parker	Gardaloo	8	S. Baldwin
Chasseur	Power	F. Blue, Jr.	Ghost	74	Logan
Chico	21	F. Braddon	Gigi	Power	Wanser
Chief, The	217	R. Davison	Gin	1271	Seidenspinner
Chippendale	189	Metalf	Glass Slipper	105	Reiser
Chiripa	1258	deMurias	Godspeed II	421	E. Neale, Jr.
Circe	360	Hayward-Sheffield	Golden Days	2020	Silbert
Circe	91	R. H. Schultz	Golden Spur	37	L. Jennings
Clara-Hayes	Power	M. J. Fleming	Good Wind	232	Goodwin
Cobe du Vent	1676	Hunt	Grayling	98	Glover
Colleen	335	F. Horn	Gull	802	Rague
Comet	379	Wirth	Guppy	149	Sartain
Cosset	Power	W. Deale	Gypsy III	302	Lieb
Courtesan	1090	Young			
Crest	Power	Thorn	Halcyon	52	Davis
Cricket	213	McLeod	Happiness Is	243	N. Heckel

Members' Yachts Alphabetically — Including Power Vessels

Happy Talk Too	257	Allyn	Marela II	112	Gibson
Here I Am	236	Abrams	Marietta II	Power	Scharfe
HHS Bounty	202	Seabrook	Marion K II	60	Bernichon
High Life	280	Miller	Marmanee	270	Lorence
Highland Fling	78	Pearson	Meb	Power	Voso
Hildegarde	6	Hard	Mele Kai	278	Palmer
Hollandia, The	210	Pless	Memory	68	Heess
Honey	813	Wight	Menehune	239	Gardner
Horizon	107	F. Atwood	Merri-Mac	300	MacGill
Horizons	151	Caliri	Merry Ann	220	Cook
Hydra	145	Carey	Mirage	427	Tauby
			Miss Betty	557	Menger
Ichiban	287	Kapus	Miss Gwen	92	Giffords
Idlewile	115	Wile	Mistress	1843	Hilgendorff
Ilona	225	Evans	Mood Indigo	131	Brunning
Imp	844	Taylor	Moon Beam	129	Hard, Jr.
Iona	1189	Forsyth	Morning Star	18	H. G. Smith
Irish Mist	304	Buetow	Mouse	273	LeSavage
Isdon	Power	A. Klesick	Mutual	Power	Blumenstetter
Island Woman	Power	Seidenberg			
			Nalani Kai	238	French
Jabberwock	258	Weiss	Nancee II	41	Bradt
Jan Maat	153	Sailor	Nauti-Lass	Power	Allen
Jeanie	102	Hangarter	Neptune	168	Tegans
Joed II	357	Feldman	Nirvana	231	Saxe
Jolie Madame	320	Whisenhunt	Nor'Easter	142	Boyd
Joy Sea	146	Brass	North Star	Power	F. Poppe
Judylin	51	R. Brown	North Star	201	Shoemaker
Kandy Bar	290	Dwyer	Odyssey	930	Grimaldi
Katinka Sr.	7	M. Smith	Old Salt	Power	Carl
Keewatin	103	Roeser	Old Squaw	Power	D. Davison
Kirsty	2521	Golfman	Onda	347	Crowe
Kraker Barrel	90	Kraker	Ondine	181	Clarke
			Opus IV	253	Deming
Lady Lou V	53	Beinert	Orca	156	Rosenberg
Lady Lynn	224	Kondor	Oriana	137	Lamdin
Ladybugs	234	Cummins	Orion	187	Alloy
Lazy Eight	272	Nolan-Hoagland	Orient Star	1441	Casazza
Legend	2790	Taussig	Osprey	194	Stoye
Lena	275	Stephani	Outcast	Power	E. Neale, Sr.
Lenore	1126	Greenbaum			
Leprechaun	322	Post	Panacea	269	Hammes
Les Girls	Power	Andrews	Panacea	271	S. Herman
Liebchen	215	Perry	Pangerbane	330	Edwin
Lief the Lucky	Power	Wills	Patience	267	DeSaix
Lively Lady	167	M. S. Fleming	Patty Wagon	89	Wood
Lodestar	177	Stevens	Pecoca	368	Frederick
Long Horn	199	C. Horn	Peggy	155	Regan
Loon	983	Orr, Jr.	Pequod	166	Angliss
Lorelei	Power	R. Lawrence	Peregrinator II	171	Phipps
Lorien	162	Buyer	Periwinkle	16	J. Hack
Lorna Doone	120	Van Nostrand	Phoebe Snow	3688	Ferenbach
			Pied Piper	179	Hamlin
MacFinn	157	Korhonen	Pilgrim	32	Berdolt
Magharita II	1149	Squicciarini	Pinkletink	1887	Flowers
Magic	118	McClure	Polly Bee	111	Ryan
Magic Dragon	469	Milne	Pontus	Power	R. Howell
Mai Tai	205	McGeary	Procyon	249	Eiser
Majapez	135	Zanetti	Puritan	152	Ramsdell
Makaira	164	Carter	Pyewacket	Power	Brey
Manana II	23	Holwell			
Manatuck	2904	Reardon	Queen E	266	Reilly
Manx	176	Dunlop	Querida	R30	Dunkerley
			Quincy Rose	240	Nelson

Members' Yachts Alphabetically — Including Power Vessels

Rebel VI	193	H. Atwood	Teal	110	J. Baker
Red Baron	219	Kaiser	Teal	268	S. L. Goldsmith
Red Fox	1142	Ricketts	Teezim Too	10	F. Zimmerman
Release	183	R. Webb	Tern	237	Williams
Reliance	197	Glinick	Terry II	311	E. Becker
Reverie	4	Macy	Three Belles	163	Morris
Road Runner	Power	Christensen, Jr.	Tia Maria	214	Cohill
Rose, The	173	E. Jennings	Tiki	223	Livingston
Ruth	113	Gottwald	Tim-De-Rin II	126	Stark
Ruthless	255	D. Thomas	T'ing Hao	1886	Milligan
			Tomahawk	227	Schoen
Sandpiper	450	Nehring	Tondelayo	2	W. Braddon
Scamper	2540	Saltzman	Tovarich	282	Scheuing
Scrimshaw	25	Callahan	Tradewinds	17	Thall
Scrimshaw	288	Kahn	Tranquilizer	281	Daytz
Sea Chantey	184	Polk	Trinket	414	Millard
Sea Cloud	139	Luckner	tuxn	2885	Boulukos
Sea Dream	241	Cooper			
Sea Fever	299	E. Henkel	Unicorn	274	Casey
Sea Gull	301	Matthews	Unity	94	Titterington
Sea Gypsy	452	Mignerey	Utopia	222	Zimmer
Sea Rover	114	Hanaway			
Sea Sprite	205	McGeary	Vaaabond	159	Luke
Sea Tanzer	136	Engerer	Valhalla	96	Kleisler
Sea Wind	Power	F. Zimmerman	Valkyrie	207	Cyr
Seadawn	143	Greetsinger	Valkyrie	148	Farrell
Seafarer	Power	Hakim	Valkyrie	233	A. Webb
Semiramis	34	deMurias	Vela II	182	Rising
Sewan	250	Lockhart	Venus	276	Iurillo
Shelley	466	I. Herman	Vi	125	Yaxis
Shoshana	165	Ladd	Viking	150	Spollen
Shrimp	40	Faas	Virainia Lee	Power	McGeehan
Skylark	45	Thayer	Vixen	39	W. Block
Slim	62	Hamstra			
Snorri	161	Abrahamsen	Wahoo II	Power	Peck
Snow Goose II	59	Garben	Wanderlust II	127	Holzmacher
So What	Power	McClelland	Watermelon	668	Rosensweig
Soicette II	141	Bolger	West Wind	180	Griffiths
Southwind	178	Bell	Whimbrel	661	Goodale
Southwind	226	Konz	Whimsey	93	Wimmerstedt
Sparkling Waters II	49	Pasch	Whisper	2420	D. Brown
Spoondrift	196	Batty	Whisper	208	Schneider
Sport	Power	Duffus	Whistler	1036	Tilden
Spray	Power	A. B. Nelson	Widgeon	22	F. Becker
Star Dust	31	H. Klesick	Wind Quest	244	Vincel
Starward	548	Moore	Wind Song	1320	Peterson
Staryker	116	McPherson	Windbag	147	Warm
Steady Eddy	212	Wilburger	Windblown	130	Jonas
Strega	192	D'Agrosa	Windjammer	134	H. Horn
Stymie	95	Simes	Winds Rush	83	Rhodes
Sumaka IV	277	Eggerstedt	Windsong	279	Bertapelle
Syren	119	Worden	Windsong	97	Rawlings
			Winky II	144	Hesse
Tally Ho	221	Moldestad	Wooden World II	67	Streit
Tamb	Power	Bracco			
Tangaroa	169	Brunnen	Yahoo	Power	W. Winter

THE END

