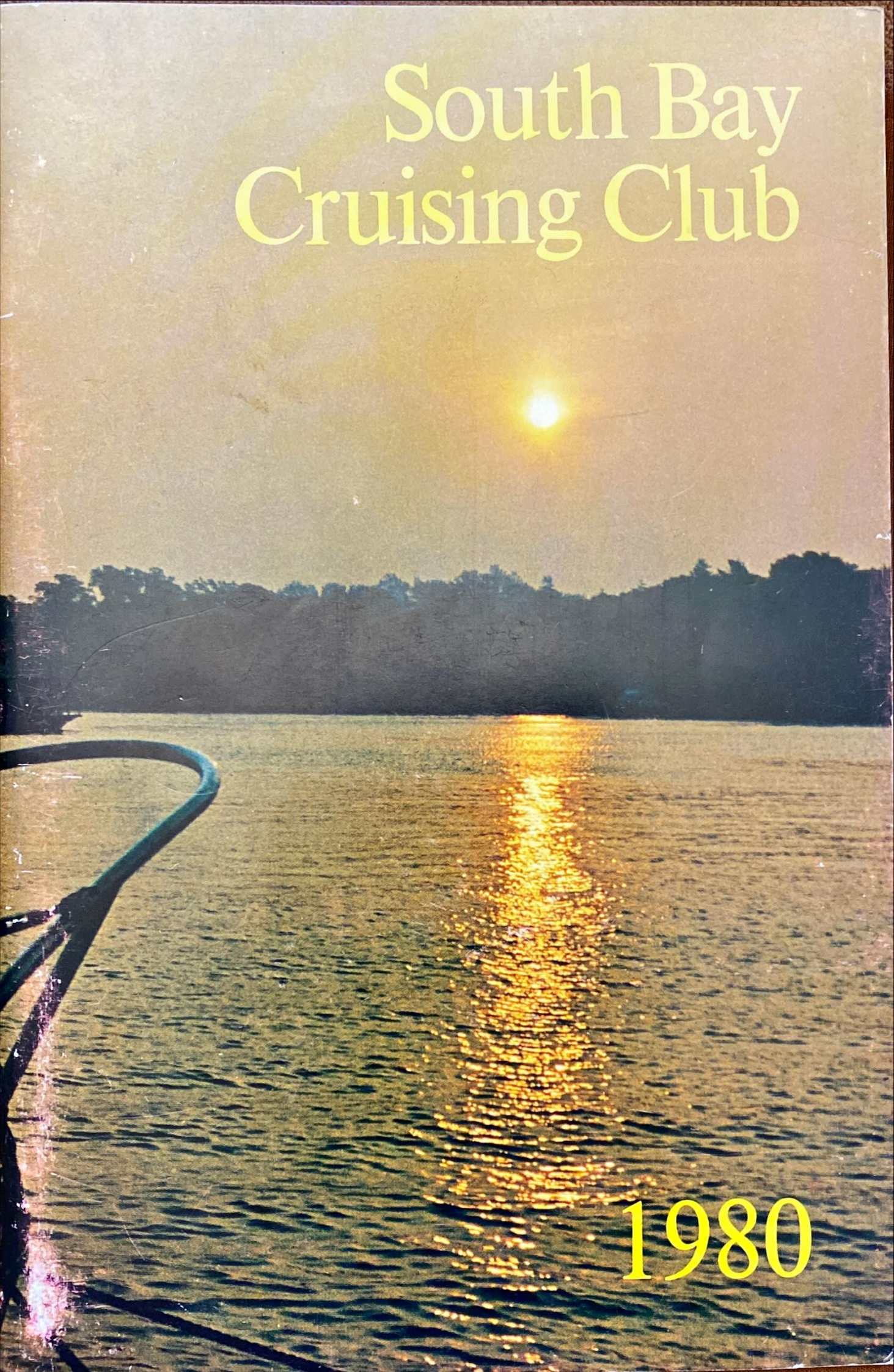


# South Bay Cruising Club



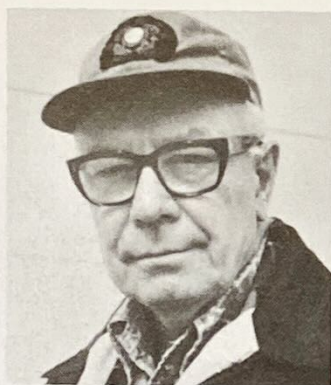
1980

## TABLE OF CONTENTS

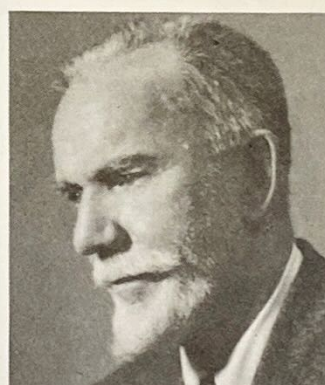
Honorary Life Members .....	2
Past Commodores .....	3
Commodore's Message .....	4
Members, Board of Governors & Committees .....	5
Social & Cruising Schedule .....	6
Racing Schedule .....	7
Notes to Racing Schedule .....	12
Notes to Social Schedule .....	14
Racing Program .....	15
Racing Eligibility .....	15
Handicaps & Classes .....	15
Race & Series Scoring .....	16
Trophies .....	17
Rules & Protests .....	18
Race Procedure .....	19
Race Courses .....	23
The Year in Review .....	30
1980 Trophies .....	50
Members SBCC 1980 .....	52
SBCC Fleet .....	61
Member Yachts .....	69
Members' Zip Codes .....	74
Flag Etiquette .....	75
Cruise Song .....	77
International Code Flags & Pennants .....	81

## HONORARY LIFE MEMBERS

Honorary Life Members have been elected to this position by the Membership for their unselfish and outstanding contributions to the Club. They have served in various capacities and each has been instrumental in giving guidance to this South Bay Cruising Club which we enjoy so much. Many pleasures you derive from the Club are directly attributable to one of these men.



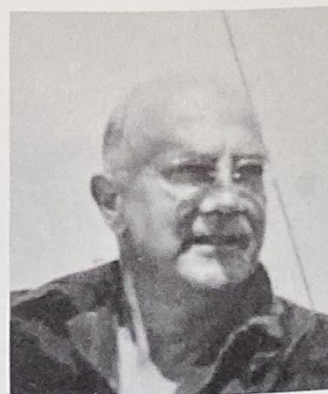
**JOHN D. BEINERT**  
*1st Handicap Chairman  
Cruise Chairman, Fleet Captain  
Corresponding Secretary, Yearbook  
Chairman, Vice Commodore, Commodore*



**DR. MARSTON L. HAMLIN\***  
*Board of Governors  
Early Cruiser & Singlehander*



**HERVEY G. SMITH\***  
*1st Vice Commodore, 1st Regatta Chairman  
1st Fleet Captain, Yearbook 1956-1962  
Devised the reversible West Island Race  
Author, Artist, Marine Historian of  
International Reputation*



**MERRITT L. SMITH**  
*1st Cruise Chairman  
Vice Commodore, Commodore  
Regatta Chairman 1956-1965*

*\*Deceased*

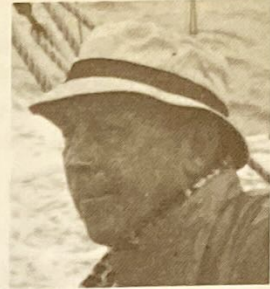
## PAST COMMODORES



**WILLIAM CARL**  
1951



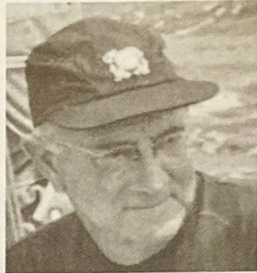
**JAMES A. SWAN, JR.**  
1952-1953



**JOHN F. YOUNG**  
1954-1955



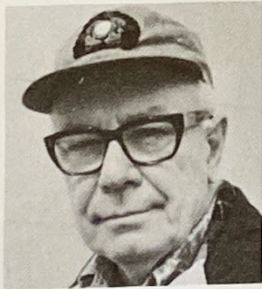
**HENRY A.V. POST**  
1956-1957



**MERRITT L. SMITH**  
1958-1959



**ROBERT L. PATERSON**  
1960-1961



**JOHN D. BEINERT**  
1962-1963



**EVERETT SEIDENBERG**  
1964-1965



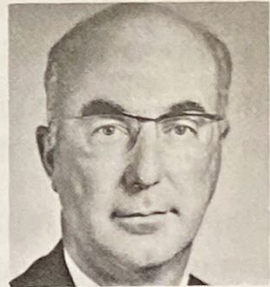
**ROGER G. RAMSDELL**  
1966-1967



**ALEX PEARSON**  
1968-1969



**FRED C. EGGERSTEDT, JR.**  
1970-1971



**WILLIAM F. BRADT**  
1972-1973



**M. WHITING THAYER**  
1974-1975



**BUD ROSENBERG**  
1976-1977



**RICHARD C. NEHRING**  
1978-1979



## COMMODORE'S MESSAGE

The special "1980's Committee" composed of the 200-man Planning Committee, the entire Membership Committee and the top-secret Zimmerfaction of 222 Utopians has issued an exciting paper charting our course into the next decade. All the data indicate a spectacular future. They predict that we'll experience everything from partying to protesting, dancing to dallying and cussin' to churchin'. And, of course, we'll be doing these things with some of the world's greatest people.

Almost invariably there's a reward connected with Cruising Club activities. It may only be a pewter tankard or a plaque, but it could be something as valuable as a memorable experience, a beautiful sunset, increased competence, or, best of all, friends, new and old.

Perhaps you'll remember best the wallowing, then winning, losing and laughing or rafting and relaxing, but I assure you that whatever you like, your enjoyment of our activities will increase as the square of your involvement.

Now, if you think this is all just preaching and promising, then bear a hand, get involved, and soon you'll be gunkholing, reefing and reaching, feuding and friendlying and you'll *LOVE* it!

*Have a great year!*

BILL



# SOUTH BAY CRUISING CLUB

An organization formed in 1951 to promote cruising under sail on Great South Bay and nearby waters.

## OFFICERS

*Commodore*, William J. Dwyer                      *Vice Commodore*, Kenneth A. Kondor  
*Rear Commodore*, Earl W. Murray, Jr.                      *Fleet Captain*, Robert J. Sheppard  
*Treasurer*, Robert S. Forman, Jr.                      *Recording Secretary*, Carl Herrforth  
*Corresponding Secretary*, Robert O. Smith                      *Chanteyman*, Jack E. Layton  
*Fleet Surgeon*, Theodore Hangarter, M.D.

## BOARD OF GOVERNORS

Louis J. Casey, William H. Cook, Patricia Kelly, John J. McInerney,  
William H. Menger, Richard C. Nehring, Boris M. Spivack

## COMMITTEES

- Championship* . . . . . Eugene M. Reardon, Chairman — 968-5082  
William J. Dwyer, Louis H. Orr, Bud Rosenberg
- Cruising* . . . . . Robert J. Sheppard, Chairman — 427-0099  
Brendan Brownyard, Dr. John Canning, Richard Daytz, Lowell Deutsch, William J.  
Dwyer, Kenneth A. Kondor, Earl W. Murray, Jr., Ronald Peterson, Richard C. Nehring,  
Roger Ramsdell, Ralph Scharr, Michael C. Smith, Robert O. Smith, Boris M. Spivack,  
Jens J. Stammnitz, Richard Stephens, Donald Zimmer
- Education* . . . . . Lowell A. Deutsch, Chairman — 589-3875  
Jeanette Deutsch, William & Barbara John, Dave & Marie King, Richard & Diane LaBella  
Robert & Carole Sheppard, Robert Snyder
- Entertainment* . . . . . Mike & Ginny Smith, Chairmen — 957-8222  
Charlie & Linda Parker, Co-Chairmen — 968-8632  
Art & Fran Champagne, John & Lorraine Classen, Bill & Rita Dobbelaer, Ed & Janet  
Fisher, Tom & Joyce Gotard, Colin & Eunice Harris, Phil & Denise Horbert, Walt &  
Diana Kachel, Lee & Mary Moreland, Dick & Jinie Nehring, Bob & Carole Olsen, Jules &  
Rita Rosen, Charlie & Connie Sagarese, Art & Blanche Schnapp, Ted & Mary Schwarting,  
Mark & Karen Stott, Bob & Judi Van Tassel
- GSBYRA Representative* . . . . . Eugene M. Reardon, Chairman — 968-5082
- Handicap* . . . . . Edward E. Miller, Chairman — 661-4862  
William H. Cook, Robert S. Forman, Richard Graham,  
William Grauer, Richard LaBella, Jack Layton
- Historian* . . . . . Everett Seidenberg, Chairman — 669-4903
- Measurement & Safety* . . . . . Volker Kind, Chairman — 661-4070
- Membership* . . . . . Leo Fring, Jr., Chairman — 785-6989
- Planning* . . . . . Kenneth A. Kondor, Chairman — 536-3213
- Program* . . . . . Donald J. Zimmer, Chairman — 785-5246  
John P. Berdolt, John H. Bogan, William P. Dunleavy, Joseph B. Schneider,  
Robert J. Sheppard, Robert O. Smith, Jens J. Stammnitz
- Protest* . . . . . Dick T. Graham, Chairman — 581-5412  
Richard LaBella, Al Mielenhausen, Louis Orr,  
Eugene Reardon, Jack Saxe, Ted Schwarting
- Race Scorer* . . . . . William Grauer, Chairman — 587-8799  
Richard Graham, Richard LaBella
- Regatta* . . . . . Richard J. LaBella, Chairman — 277-4725  
Brendan Brownyard, William Dwyer, Jack Layton, Edward Miller, Eugene Reardon,  
Louis Casey, Joel Becker, Richard Graham, Lowell Deutsch, William Grauer
- Storekeeper* . . . . . Robert G. Van Tassel — 669-7344
- Trophy* . . . . . Stephen W. DeLise, Chairman — 587-7154  
Jacqueline Forman, Bill Rottkamp
- Welcoming* . . . . . Anthony Baroni, Chairman — 667-6758  
Kathy Baroni, Lee & Mary Moreland, Hale & Claire Smith
- Yearbook* . . . . . Anton F. Davies, Chairman — 587-0736  
Thomas & Delores Burke, Evelyn Davies, Ted & Mary Schwarting

**SBCC IS A MEMBER OF THE GREAT SOUTH BAY YACHT RACING ASSOCIATION AND  
UNITED STATES YACHT RACING UNION**

## SOUTH BAY CRUISING CLUB 1980 SOCIAL AND CRUISING SCHEDULE

<u>Date</u>	<u>Day</u>	<u>Event</u>	<u>Location</u>	<u>Vessel</u>	<u>Captain</u>
Apr. 26	Sat.	Spring Cocktail Party	Bay Shore Y. C.		
May 17	Sat.	Rendezvous	Hemlock Heading	Caprioie	J. Stammnitz
May 24	Sat.	Rendezvous	Great River	Magic	R. Sheppard
May 26	Mon.	Commissioning Day	Babylon Y. C.		
May 31	Sat.	Rendezvous	Secret Harbor	West Wind	L. Deutsch
June 7	Sat.	Rendezvous	Robert Moses	Maryanne	R.O. Smith
June 14	Sat.	Rendezvous	Watch Hill	Magic	R. Sheppard
June 21	Sat.	Rendezvous	Hemlock Heading	Lady Lynn	K. Kondor
June 28	Sat.	Rendezvous	Great River	Sinn Fein	E. Murray
July 4	Fri.	Start 3-Week Cruise		Magic	R. Sheppard

## SOUTH BAY CRUISING CLUB 1980 RACING SCHEDULE

<u>Date</u>	<u>Day</u>	<u>Event</u>	<u>Warn- ing Gun</u>	<u>Start- ing Seq.</u>	<u>Notes</u>	<u>Race Chairman</u>	<u>Starting Location</u>	<u>Course</u>
May 17	Sat.	Tune-Ups	1000 1400	Reg.	2,3	R. Van Tassel	Heckscher	A-C
May 25	Sun.	LIYC Invitational	1200	Reg.	8,11	LIYC	Babylon	C,F
May 26	Mon.	Creepstakes	1100	Crpsks.	1	H. Hamstra	Babylon	D,E
May 31	Sat.	Novice Day	1000 1400	NoSp.	2,3,11	A. Davies	Heckscher	A-C
June 8	Sun.	Spring Ocean	0900	Reg.	7	F. Wiedersum	Ocean	A,B
June 10	Tues.	E. Twilight Spring I	1930	Reg.	2,4,8	L. Deutsch	Sayville	A-E
June 11	Wed.	W. Twilight Spring I	1930	Reg.	2,4,8	J. Berdolt	Bay Shore	A-C
June 14	Sat.	Family Race	1100	NoSp.	2,11	(St.) J. Classen (Fin.) T. Schwarting	Bay Shore	J
June 15	Sun.	Family Race	1400	NoSp.	2,11	(St.) T. Schwarting (Fin.) L. Parillo	Watch Hill	A
June 17	Tues.	E. Twilight Spring II	1930	Reg.	2,4,8	M. Portnoy	Sayville	A-E
June 18	Wed.	W. Twilight Spring II	1930	Reg.	2,4,8	C. Sagarese	Bay Shore	A-C
June 21	Sat.	Pursuit Races	1000 1400	Pursuit	1,2,3	R. Graham	Heckscher	A
June 24	Tues.	E. Twilight Spring III	1930	Reg.	2,4,8	S. Jonas	Sayville	A-E
June 25	Wed.	W. Twilight Spring III	1930	Reg.	2,4,8	R. Dunlop	Bay Shore	A-C
June 28	Sat.	SMITH TROPHY	1300	Expd.	1,7,9	W. Grauer	Bay Shore	G
July 5	Sat.	Babylon Y.C. Invitational	1300	Reg.	8,11	Babylon YC	Babylon	A-D

**SOUTH BAY CRUISING CLUB  
1980 SOCIAL AND CRUISING SCHEDULE**

<u>Date</u>	<u>Day</u>	<u>Event</u>	<u>Location</u>	<u>Vessel</u>	<u>Captain</u>
July 12	Sat.	Start 2-Week Cruise		Black Petrel	R. Ramsdell
July 26	Sat.	End of Cruise Rendezvous	Great River	Black Petrel	R. Ramsdell
Aug. 2	Sat.	Rendezvous	Secret Harbor	Wild Thyme	B. Spivack
Aug. 9	Sat.	Rendezvous	Great River	Salty C's	J. Canning
Aug. 10	Sun.	Champagne Breakfast	Great River	Sundowner	M. Smith

## SOUTH BAY CRUISING CLUB 1980 RACING SCHEDULE

<u>Date</u>	<u>Day</u>	<u>Event</u>	<u>Warn- ing Gun</u>	<u>Start- ing Seq.</u>	<u>Notes</u>	<u>Race Chairman</u>	<u>Starting Location</u>	<u>Course</u>
July 8	Tues.	E. Twilight Summer I	1930	Reg.	2,4,8	P. Linker	Sayville	A-E
July 9	Wed.	W. Twilight Summer I	1980	Reg.	2,4,8	S. DeLise	Bay Shore	A-C
July 15	Tues.	E. Twilight Summer II	1930	Reg.	2,4,8	J. Reilly	Sayville	A-E
July 16	Wed.	W. Twilight Summer II	1930	Reg.	2,4,8	P. Knott	Bay Shore	A-C
July 19	Sat.	Summer Series	1000 1400	Expd.	2,3	A. Mielenhausen	Heckscher	A-C
July 22	Tues.	E. Twilight Summer III	1930	Reg.	2,4,8	J. McInerney	Sayville	A-E
July 23	Wed.	W. Twilight Summer III	1930	Reg.	2,4,8	W. Cook, Jr.	Bay Shore	A-C
July 26	Sat.	GSBYRA Invitational	1300	Reg.	11,12	GSBYRA	Babylon	A-C,F
July 29	Tues.	E. Twilight Midsummer I	1900	Reg.	2,4,8	D. Cameron	Sayville	A-E
July 30	Wed.	W. Twilight Midsummer I	1900	Reg.	2,4,8	P. Kelly	Bay Shore	A-C
Aug. 2	Sat.	COMMODORE'S CUP	1300	Reg.	7,9	J. Stammnitz	Nicoll Bay	A
Aug. 3	Sun.	LADIES' RACE	1300	Reg.	1,9	E. Reardon	Bay Shore	A-C
Aug. 5	Tues.	E. Twilight Midsummer II	1900	Reg.	2,4,8	J. Layton	Sayville	A-E
Aug. 6	Wed.	W. Twilight Midsummer II	1900	Reg.	2,4,8	D. Stephani	Bay Shore	A-C
Aug. 9	Sat.	WEST ISLAND	1300	W.Isl.	5,7,9	A. Heckel	Nicoll Bay	B

## SOUTH BAY CRUISING CLUB 1980 SOCIAL AND CRUISING SCHEDULE

<u>Date</u>	<u>Day</u>	<u>Event</u>	<u>Location</u>	<u>Vessel</u>	<u>Captain</u>
Aug. 11	Mon.	G R E A T  R I V E R  W E E K			
Aug. 12	Tues.				
Aug. 13	Wed.		Great River	Magic	R. Sheppard
Aug. 14	Thurs.				
Aug. 15	Fri.				
Aug. 16	Sat.	Great River Blast			
Aug. 23	Sat.	Rendezvous	Hemlock Heading	Sanderling	R. Nehring
Aug. 30	Sat.	Rendezvous	Sayville	Kandy Bar	W. Dwyer
Sept. 6	Sat.	Rendezvous	Robert Moses	Rakama II	R. Scharr

**SOUTH BAY CRUISING CLUB  
1980 RACING SCHEDULE**

<u>Date</u>	<u>Day</u>	<u>Event</u>	<u>Warn- ing Gun</u>	<u>Start- ing Seq.</u>	<u>Notes</u>	<u>Race Chairman</u>	<u>Starting Location</u>	<u>Course</u>
Aug. 11	Mon.	Great River Week I	1300	Reg.	2,8	K. Kondor	Nicoll Bay	A-I
Aug. 12	Tues.	Great River Week II	1300	Reg.	2,8	E. Brooks	Nicoll Bay	A-I
Aug. 13	Wed.	Great River Week III	1300	Reg.	2,8	R. Nehring	Nicoll Bay	A-I
Aug. 14	Thurs.	Great River Week IV	1300	Reg.	2,8	B. Spivack	Nicoll Bay	A-I
Aug. 15	Fri.	Great River Week V	1300	Reg.	2,8	E. Murray	Nicoll Bay	A-I
Aug. 16	Sat.	Race Week Wind-up	1100	Reg.	7	M. Stott	Nicoll Bay	C-H
Aug. 19	Tues.	E. Twilight Midsummer III	1900	Reg.	2,4,8	P. Patin	Sayville	A-E
Aug. 20	Wed.	W. Twilight Midsummer III	1900	Reg.	2,4,8	W. Cook	Bay Shore	A-C
Aug. 23	Sat.	FOULKE TROPHY	1800	Reg.	6,7, 9,10	A. Baroni	Babylon	G
Aug. 26	Tues.	E. Twilight Fall I	1900	Reg.	2,4,8	R. Sheppard	Sayville	A-E
Aug. 27	Wed.	W. Twilight Fall I	1900	Reg.	2,4,8	V. Kind	Bay Shore	A-C
Aug. 30	Sat.	Sayville YC Invitational	1300	SYC	2,8,11	Sayville YC	Nicoll Bay	G
Aug. 31	Sun.	Sayville YC Invitational	1100	SYC	2,8,11	Sayville YC	Sayville	G,SYC
Sept. 2	Tues	E. Twilight Fall II	1900	Reg.	2,4,8	B. Sweeney	Sayville	A-E
Sept. 3	Wed.	W. Twilight Fall II	1900	Reg.	2,4,8	K. Dahl	Bay Shore	A-C
Sept. 7	Sun.	Fall Ocean	0900	Reg.	7	L. Orr	Ocean	A,B

## SOUTH BAY CRUISING CLUB 1980 SOCIAL AND CRUISING SCHEDULE

<u>Date</u>	<u>Day</u>	<u>Event</u>	<u>Location</u>	<u>Vessel</u>	<u>Captain</u>
Sept. 13	Sat.	Rendezvous	Watch Hill	Windquest	R. Stephens
Sept. 20	Sat.	Rendezvous	Great River	Salty C's	J. Canning
Sept. 27	Sat.	Rendezvous	Hemlock Heading	Tranquilizer	R. Daytz
Oct. 4	Sat.	Rendezvous	Unqua Heading	Utopia	D. Zimmer
Oct. 11	Sat.	Rendezvous	Secret Harbor	Capriole	J. Stammnitz
Oct. 18	Sat.	Rendezvous	Watch Hill	Wild Rover	B. Brownyard
Oct. 25	Sat.	Rendezvous	Great River	Solitude	R. Peterson
Nov. 8	Sat.	Fall Cocktail Party	Sayville Y. C.		
Dec. 13	Sat.	Christmas Party	Bay Shore Y. C.		
Feb. 7, 1981		Winter Dinner-Dance	LaGrange		

### NOTES TO RACING SCHEDULE

1. See SPECIAL RACE REQUIREMENTS (page 20).
2. See SERIES Information (page 17).
3. Time Limit 1230 for AM race.
4. Time Limit 2230.
5. Time Limit 1900.
6. No Time Limit.
7. Counts toward season class championship.
8. Alternates counting toward season class championship
9. Winners in races shown in ALL CAPS qualify for Perpetual Trophies. Consult Race Information under TROPHIES for specifics.
10. Finish at Babylon Yacht Club dock.
11. No SBCC racing fee required
12. GSBYRA INVIT. — requires payment of entry fee to GSBYRA. (See GSBYRA yearbook for entry form).

## SOUTH BAY CRUISING CLUB 1980 RACING SCHEDULE

<u>Date</u>	<u>Day</u>	<u>Event</u>	<u>Warn- ing Gun</u>	<u>Start- ing Seq.</u>	<u>Notes</u>	<u>Race Chairman</u>	<u>Starting Location</u>	<u>Course</u>
Sept. 9	Tues.	E. Twilight Fall III	1830	Reg.	2,4,8	R. Piechnik	Sayville	A-E
Sept. 10	Wed.	W. Twilight Fall III	1830	Reg.	2,4,8	R. Coleman	Bay Shore	A-C
Sept. 13	Sat.	Family Race	1100	NoSp.	2,11	(St.) R. Forman (Fin.) B. Brownyard	Bay Shore	J
Sept. 14	Sun.	Family Race	1400	NoSp.	2,11	(St.) B. Brownyard (Fin.) L. Werner	Watch Hill	A
Sept. 21	Sun.	Class Race	1300	Class	1,11	R. Wissman	Bay Shore	D-F
Sept. 27	Sat.	Babylon YC Fall Invitational	1300	Reg.	8, 10,11	Babylon YC	Babylon	A-D
Oct. 11	Sat.	Discoverer's Race	1300	Reg.	7	T. Hangarter	Bay Shore	D
Oct. 25	Sat.	Last Chance	1000	Reg.	7	H. Colleran	Bay Shore	G



# SOUTH BAY CRUISING CLUB NOTES TO 1980 SCHEDULES

## NOTES TO SOCIAL AND CRUISING SCHEDULE

1. Refer to Cruising Guide for directions to Rendezvous location.
2. Details will be provided at a later date.

### AWARDS:

*Cruising Award* is given for cruising off the Bay. A yacht may qualify by making at least one week with the Club Cruise, or by submitting the ship's log to the Fleet Captain for his own cruise.

*Great River Week Award* is given for attending Great River Week. A yacht must be present in Great River Monday through Friday in order to earn this award.

*Blue Water Award* is made only as recognition for an extended cruise off soundings. A select committee, along with the Fleet Captain, will review candidates and make this award only when they deem the cruise to be an outstanding achievement.

A brief history of the *Blue Water Award* is submitted by our club historian Everett Seidenberg:

#### The "Blue Water Cruising Award" of the South Bay Cruising Club

The following are the qualifications for the "Blue Water Cruising Award," as stated in the SBCC yearbooks to date (1953-1978):

In 1952 it was called the "Annual Cruise Award" for the "longest, best-planned and executed cruise" of the year. Also in that year, a "special cruising award" was given to a skipper for an exemplary cruise. The first winner was Jack Young in "Reverie" for extensive cruising as far as Maine.

In 1953 it was referred to as the "Blue Water Trophy" and was awarded to R.W. Bennett in "Bewitched" for a cruise covering as far as the West Indies, so even in those days when our fleet was small, our achievements were notable.

1965 saw the standards set high again, with the "Blue Water Award" going to Stuart Baldwin for his cruise to Bermuda in "Gardaloo," and a special cruising award was given again, for the "Reverie's" cruise again to Maine, this time skippered by Ed Macy.

The 1967 Yearbook stated: "It is the practice of the Club from time to time to award Blue Water or Special cruising awards for especially noteworthy or meritorious cruises," so it is therefore not mandatory for the award to be given each year, as was originally stated in 1952.

In 1969 the definition was restated as "for notable extended cruises offshore" without mentioning an annual basis, and further described in 1970 as "SBCC's most prestigious award, given at the discretion of the Cruising Committee in recognition of an extended cruise off soundings."

Since 1970 it has again been mentioned several times as "given at the discretion of the Cruising Committee."

Everett F. Seidenberg, *Historian*, South Bay Cruising Club

The yearbooks do not provide a complete list of winners over the years and an examination of the newsletter and meeting notes and minutes will be made so that a complete list can be prepared.

#### An Incomplete List:

- |   |   |
|---|---|
| 1952 — Jack Young (Doc Hamlin special award)  | 1968 — Jack Young (Don Streit & Ed Ricketts special awards) |
| 1953 — R.W. Bennett                           |   |
| 1964 — Art Flynn                              | 1969 — Chet Phipps  |
| 1965 — Stuart Baldwin (Ed Macy special award) | 1972 — Arthur Sternberg, M.D.                               |
| 1966 — Ed Macy                                | 1973 — Bill Milligan  |
| 1967 — Ed Forsyth                             | 1979 — Bob Wissman  |



**CAPT. BOB WISSMAN**  
*Holder of "Blue Water Cruising Award"*

## RACING PROGRAM – ELIGIBILITY/HANDICAPS/CLASSES

### ELIGIBILITY

All proper cruising sailboats owned or chartered by SBCC members are eligible to participate in Club races provided they have paid the racing fee and have requested and received a SBCC handicap.

SBCC family races, the Class Day Race, and other Yacht Club invitationals do not require payment of the SBCC racing fee. If members intend to enter these races they must apply for a SBCC handicap.

### HANDICAPS

The SBCC fleet includes many widely differing types of cruising sailboats. In order to make race participation attractive to as many members as possible, SBCC Handicap racing is offered. Under this system, every yacht in the fleet upon request to the Handicap Chairman is given a SBCC Rating based on its maximum speed potential.

The SBCC Handicap System rates each yacht according to its maximum speed potential, thereby encouraging each skipper to get the best performance from his yacht.

Maximum speed potential is established for each yacht through (1) statistical analysis of race data for consistently well-sailed boats of similar design, (2) comparison with data from other racing fleets and (3) speed-trending data from past performances.

Under the SBCC Handicap System all yachts of different design will have distinctive maximum speed characteristics from which individual handicaps are derived. Fine tuning factors are applied to yachts of the same design to account for differences in rig, prop type, sail complement, etc.

Each racing skipper obliged to contact the Handicap Chairman in advance of his first race under the following conditions:

- (a) A particular yacht is to be raced in the SBCC fleet for the first time.
- (b) The skipper has raced another yacht bearing the same sail number during the season.
- (c) The sail complement has been changed.
- (d) The basic design of the yacht is modified in any way which could affect its speed potential.

A skipper who believes his yacht's handicap might deserve correction may request a handicap review by submitting a written request to the Handicap Committee stating the reasons he believes a review is in order.

### SBCC HANDICAP CLASSES

Two classes, Spinnaker and Non-Spinnaker, are scored under the SBCC Handicap System:

- Skippers electing to race in the Spinnaker class may use their full sail complement, and any sail combination consistent with USYRU racing rules or special race instructions.

- It is the intent of the Non-Spinnaker class to restrict sail inventory use to only those sails that can be correctly flown on all points of sail. In the Non-Spinnaker class, only one headsail (either a jib or genoa of a minimum of 3 ounce cloth) may be flown in the foretriangle at any one time. Yachts handicapped as having permanent double head rigs will be permitted to fly their staysail when racing Non-Spinnaker.

## RACING PROGRAM – SCORING/SERIES

- Members may change classes as often as the desire except that no class change is permitted after the warning signal.
- The Novice class is a temporary Non-Spinnaker class designed to encourage new skippers (or others who have never won a trophy) to race in the early races of the season.

### SCORING METHOD

SBCC races will be scored using the Time on Distance method. A yacht's time allowance is calculated by multiplying her SBCC handicap by the race course distance. The time allowance is then subtracted from the yacht's elapsed time yielding corrected time. The yacht with the lowest corrected time is the winner.

Race results are mailed to each participating skipper shortly after each race and official results are printed monthly in the "Masthead."

### SERIES SCORING

Points for each race will be awarded on the basis of  $\frac{3}{4}$ -point for first, two points for second, three points for third, etc. DNF and WDR boats will receive 1 point more than the number of boats in that class that started in the series. DNS and DSQ boats will receive 2 points more than the number of boats in that class that started in the series.

A starter in any one race of the series will be considered to have started in all the races of the series. Series position will be determined by the total points accumulated by each yacht, in inverse order. Ties will be broken in favor of the boat which has beaten the other the greater number of times. If a tie still remains it will be broken in favor of the finish order of the last race of the series.

A Yacht that serves as committee boat for one race of any series will receive credit towards series qualification for that race and points equal to the average of its finish positions in the other races of the series, DNS and DNF races included.

### SERIES INFORMATION

#### Tune-Up Series

This is a two-race series with no throw-outs. There will be a raft-up in Secret Harbor between races. To emphasize tuning, no prizes will be awarded.

#### Novice Series

This is a two-race series with no throw-outs. It is open only to owners who have never previously won a trophy. Experienced crew will be available by request. Non-Spinnaker class only. Raft-up and critique in Secret Harbor between races.

#### East and West Twilight Series

These are three-race series. They will be scored on the basis of a yacht's best two races. (Except committee boat, as noted above.)

## RACING PROGRAM — SERIES/CHAMPIONSHIP/TROPHIES

### Family Series

Trophies awarded on total corrected time for two-day series. Crews must sleep aboard Saturday night. Non-Spinnaker class only.

### Pursuit Races

This is a two-race series with no throw-outs. There will be a raft-up in Secret Harbor between races. Non-Spinnaker class only.

### Summer Series

This is a two-race series with no throw-outs. There will be a separate start for Novices (see Expanded start sequence). There will be a raft up in Secret Harbor between races.

### Great River Week

This is a five-race series. It will be scored on the basis of a yacht's best four races. Racers traditionally join the Great River Week raft up after each race.

### Sayville Yacht Club Invitation

See SYC start sequence (Page 20). No streamers required for catboats. No throw-outs. On Saturday, all boats will sail Nicoll Bay Course G.

On Sunday, Sp and NS classes will sail Sayville Course G; catboats will follow SYC instructions.

### SBCC CLASS CHAMPIONSHIP

Class Championship chevrons and trophies will be awarded to the yachts with the lowest scores in 10 races. The races selected are designated with note 6 in the racing schedule, except that a maximum of any three Twilight races, a maximum of any three Great River Week races and a maximum of three Yacht Club Invitationals may be used.

### RACE TROPHIES

Perpetual trophies are awarded for one year only. They are awarded to the yacht with the best corrected time based on the SBCC Handicap rule.

Each year the club awards nine perpetual trophies, as follows:

*Commodore's Cup* — Best corrected time in the Commodore's Cup Race.

*Foulke Trophy* — Best corrected time in the Foulke Trophy Race (night race).

*Sympatico Cup* — Last yacht to cross the finish line in the Foulke Trophy race.

*Smith Trophy* — Best corrected time in the Smith Trophy Race.

*Deale Trophy* — Best corrected time in the West Island Race.

*Schnur Trophy* — Last yacht to cross the finish line in the West Island Race.

*Governor's Cup* — Best total score for the Commodore's Cup, West Island and Foulke Trophy races.

*Broadside Trophy* — Best corrected time in the Ladies' Race by a yacht with an all-girl crew.

*Cruising Club Crock* — Best corrected time in the Around Long Island Race.

Keeper cups are given to winners of these trophies and their names are engraved on the perpetual trophy. It is the responsibility of the winner of a perpetual trophy to return it by November 1 to the Trophy Chairman for engraving of the following year's winner.

## RACING PROGRAM – RULES/PROTESTS

Trophies for individual SBCC races (when not part of a series) will be awarded to each class, according to the following schedule:

Number of Starters	Trophies for
2 or 3	1st
4 through 6	1st and 2nd
7 or more	1st, 2nd and 3rd

In SBCC series, the greatest number of starters in any race will govern the number of trophies awarded for that series.

### RULES

Racing rules of the USYRU shall be observed except as otherwise specified in these instructions. Burgees and other flags may be flown when racing. Government navigation buoys not stated to be marks of the course may be disregarded at the discretion of the skipper.

The Inland Rules will replace Part IV of the Racing Rules between the hours of sunset and sunrise. All required lights must be shown.

### IDENTIFICATION

Racing numbers, either USYRU or SBCC, are required on mainsails, spinnakers and overlapping (LP greater than 130% J) headsails, in accordance with current USYRU rules.

Racing yachts are required to fly class streamers of the following colors from their standing backstays or the leach of their mainsails. Streamers should measure 4" x 18".

Class	Color
Spinnaker	Red
Non-Spinnaker	Yellow
Novice (no spin only)	Blue

#### West Island Race Only

Class	Color
Spinnaker #1	White
Spinnaker #2	Red
Non-Spinnaker #1	Yellow
Non-Spinnaker #2	Blue

Absence of a streamer or racing numbers will be cause for disqualification.

### EQUIPMENT

The equipment required by USYRU for category 4 races and the minimum USCG safety equipment is strongly recommended for all races.

### PROTESTS

The SBCC Protest Committee operates under Racing Rules of the USYRU, supplemented by published decisions of the USYRU Appeals Committee. In addition, it shall hear all protests arising from violation of the Inland Rules which replace Part IV of the USYRU Rules between sunset and sunrise.

## RACING PROGRAM — RACE PROCEDURE

It will only entertain protests made in conformity to the USYRU rules including:

- Display of protest flag
- Notification of protested yacht
- Notification of Race Committee
- Submission of written protest within 72 hours
- Citation of rule or rules allegedly infringed

Protest must be addressed to the Chairman of the Protest Committee and hand-delivered or postmarked within 72 hours of the conclusion of the race in question.

### SPECIAL RACE REQUIREMENTS

**Single-Handed Creepstakes** — Only Skipper is allowed on boat during race.  
Two Classes: 30 foot LOA and over; and under 30 foot LOA.

**Novice Race** — Open only to owners who have never previously won a trophy. Experienced crew will be available on request. There will be a raft up in Secret Harbor between races.

**Pursuit Races** — This is a special “staggered start” series where “slower” yachts get a head start over “faster” yachts. Theoretically, all yachts should finish together, but the first yacht to finish wins. Start sequence lists will be mailed to racers prior to the race. The list will give each yacht’s start time and detailed instructions covering the conduct of this race.

**Smith Trophy** — There will be a separate start for Novices after the Spin and No-Spin classes. (see expanded start sequence)

**Family Race** — Non-Spinnaker race to and from Watch Hill. Crews must sleep aboard Saturday night.

**West Island Race** — The Spin and No-Spin classes will be split into divisions for this race: Spin #1, Spin #2, No-Spin #1 and No-Spin #2. Low handicap yachts will be assigned to Spin or No-Spin Division #1 and high handicap yachts will be assigned to Spin or No-Spin Division #2. The handicap determining the split point for each class will be published prior to the race.

**Ladies’ Race** — Skipper must be a lady. Broadside Trophy for best in fleet with all-girl crew. Yachts eligible for this trophy must advise Race Committee prior to first warning signal.

**Class Race** — A one-design race for any class with three or more entries. Each class will be considered as racing in Spin class unless the class agrees beforehand to sail inventory limitations.

# RACING PROGRAM – RACE PROCEDURE

## STARTING

Signals will be made at five minute intervals with each signal lowered one minute before the hoisting of the next. The visual signal governs; the gun merely calls attention to it.

## START SEQUENCE

Abbreviations:

warn - warning signal  
 prep - preparatory signal  
 S/ - start signal

Sp - Spinnaker Class  
 NS - Non-spinnaker Class  
 Nov - Novice (No Spin only)

Time	Shape	Regular	West Island	SYC	Expanded
:00	White	Warn	Warn	Warn	Warn
:05	Blue	Prep	Prep	Prep	Prep
:10	Red	S/SP	S/NS #2	S/sp	S/sp
:15	White	S/NS	Prep	S/NS	S/NS
:20	Blue		S/NS #1	S/Catboats	S/Nov
:25	Red		Prep		
:30	White		S/Sp #2		
:35	Blue		Prep		
:40	Red		S/Sp #1		

Time	Shape	No Spin	Class Race	Creepstakes
:00	White	Warn	Warn	Warn
:05	Blue	Prep	Prep	Prep
:10	Red	S/NS	S/Morgan 38	S/30 foot LOA and over
:15	White		S/Corvette	S/Under 30 foot LOA
:20	Blue		S/Wanderer	
:25	Red		S/Others	

When, after a starting signal, all the yachts of the class or classes involved have properly started, the Race Committee will, if practicable, announce "all clear".

## RECALLS

The Race Committee will endeavor to notify any yacht starting early by means of a Recall signal. The signal will be one blast of a horn or whistle for each yacht over early. The committee will also hail the yachts being recalled individually. Nearby yachts are requested to pass the hail. Any yacht failing to hear or heed such a recall will be penalized by having one-half hour added to her elapsed time.

**General Recall:** If there should be a number of unidentified premature starters, or if an error is made in the starting procedure such as significant inaccuracy in the interval between signals, the Race Committee will make the General Recall signal. The starting sequence will resume with the Warning signal for the class that was recalled.

## RACING PROGRAM – RACE PROCEDURE

### STARTING LINE ETIQUETTE

Racing skippers are reminded to stay clear of the starting line until the Preparatory Signal for their class. Failure to do so may result in disqualification.

The Preparatory Signal for each class is the Starting Signal for the preceding class (except in the West Island Race). Yachts starting with the wrong class may be disqualified.

Skippers electing to change class after arriving in the starting area (but before the warning signal) *must* notify the race committee of that change.

### TIME LIMIT

Regardless of time of start, the time limit for each class will expire at 1800 for all races except as noted below:

Eastern & Western Twilights — 2230

Foulke Trophy — No time limit

West Island — 1900

Tune up, Novice, Summer & Pursuit Morning Race — 1230

If any yacht finishes within the time limit, it is a race for her class. Yachts finishing after the committee boat has left its station should take their own time and report it to the Race Committee as soon as possible.

### SPECIAL SIGNALS

Code flags A through J are used to designate courses (see Course Instructions).

Code flags below apply to all SBCC-conducted races:

**L** — One of the designated MARKS is missing; come within hail for instructions.

**M** — ROUND or pass the object displaying this signal instead of the mark it replaces.

**N** — ABANDONMENT, race called off (accompanied by three guns).

**R** — Sail the designated course in the REVERSE direction, Leave all marks to opposite hand.

**S** — Sail the SHORT course prescribed in the course instructions. When flown after the start (accompanied by two guns), finish between the committee boat and the nearby mark of the course.

**T** — Sail the designated course TWICE around.

**Answering Pennant** - POSTPONEMENT signal (accompanied by two guns). Starts postponed fifteen minutes. Warning signal will be made 1 minute after Answering Pennant is lowered.

**1st Repeater** - GENERAL RECALL signal (accompanied by two guns). Starting sequence resumes with the Warning signal for the class being recalled.

### VHF COMMUNICATIONS

VHF radio communications may be maintained during a race utilizing channel 16 for calling and channels 9, or 68 thru 72 for communication. Radio communications may be utilized to relay information on unusual situations during races such as postponements, recalls, withdrawals, etc. However, Race Committees are not required to use radio. Racers should **not** communicate with the Race Committee from the time of the Warning gun to the time of the last class start.

## RACING PROGRAM – RACE PROCEDURE

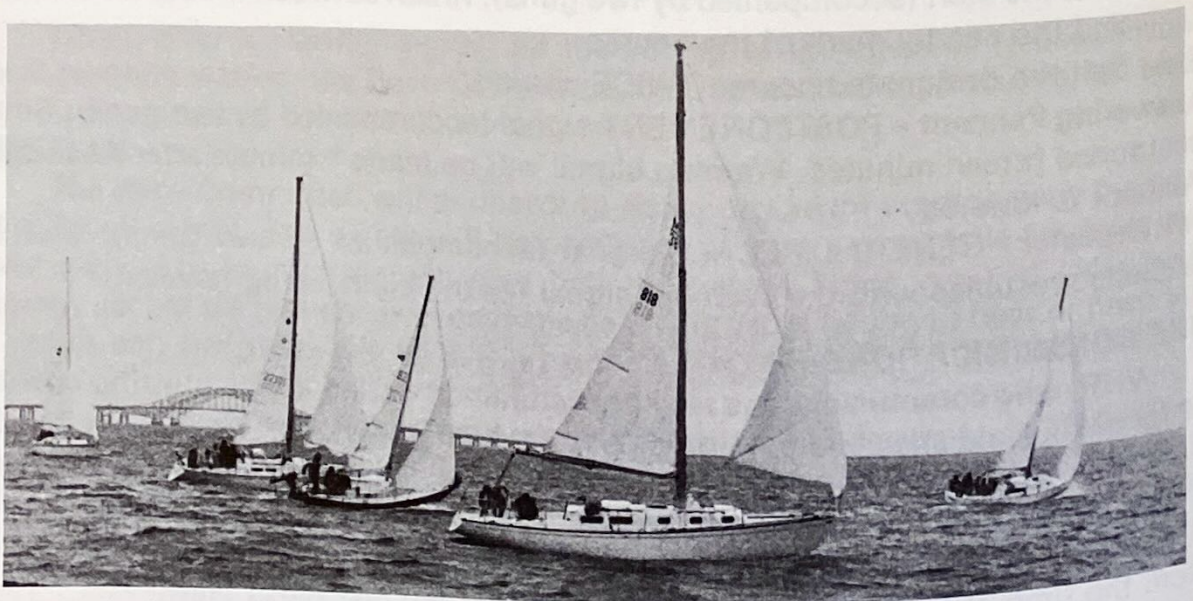
### COURSE INSTRUCTIONS

SBCC courses in the Bay have been grouped by starting area as follows:

Babylon	Ocean
Bay Shore	Sayville
Heckscher Park	Watch Hill
Nicoll Bay	

For each of these areas, a variety of courses is described below, each bearing a distinguishing letter. The choice of course available to the Race Committee on any given day is shown in the Race Schedule. The course selected will be signaled from the Committee Boat by the appropriate letter code flag. (Letters A through J may be used).

Any course can be reversed by code Flag "R" or shortened by code flag "S" as described under "SPECIAL SIGNALS" above.



## RACING PROGRAM – RACE COURSES

### BABYLON COURSES

**Course A:** Start established by committee boat off Willetts Creek; to Flasher No. 7 off Oak Island Channel, leaving it to port; through the center span of Robert Moses Causeway to Flashing Green No. 11, leaving it to starboard; to Flashing Green No. 1 off Bayberry Point, leaving it to starboard; to Flashing Green No. 5 off Nicoll Point, leaving it to port; to Black and White Mo(A) in Great Cove, leaving it to port; return through center span of the Causeway to finish line off Willetts Creek. Course distance: 16.5 nm. Short Course \* distance: 15.6 nm.

**Course B:** Start established by committee boat off Willetts Creek; to Flasher No. 7 off Oak Island Channel, leaving it to port; through the center span of Robert Moses Causeway to Flashing Green No. 11, leaving it to starboard; to Flashing Green No. 1 off Bayberry Point, leaving it to starboard; to Can No. 3 off Hecksher State Park, leaving it to port; to Black and White Mo(A) in Great Cove, leaving it to port; return through center span of Causeway to finish line off Willetts Creek. Course distance: 13.2 nm. Short Course \* distance 12.3 nm.

**Course C:** Start established by committee boat off Willetts Creek; to Flasher No. 7 off Oak Island Channel, leaving it to port; through the center span of the Robert Moses Causeway to Flashing Green No. 11, leaving it to starboard; to Flashing Green No. 1 off Bayberry Point, leaving it to port; to Black and White Mo(A) in Great Cove, leaving it to port; return through center span of the Causeway to finish line near Willetts Creek. Course distance 9.7 nm. Short course \* distance: 8.8 nm.

**Course D:** Start established by committee boat off Willetts Creek; to Flasher No. 7 off Oak Island Channel, leaving it to port; through the center span of the Robert Moses Causeway to Nun No. 6, leaving it to port. Return through center span of the Causeway to finish line off Willetts Creek. Course distance: 4.3 nm. Short Course \* distance 3.4 nm.

**Course E:** Start established by committee boat off Willetts Creek; to Flasher No. 7 off Oak Island Channel leaving it to port; through the center span of Robert Moses Causeway to Nun No. 6, leaving it to port; Return through center span of the Causeway to the starting line stake boat, leaving it to port; to Flasher No. 7 leaving it to port; to finish line off Willetts Creek. Course Distance: 6.0 nm. Short Course \* distance: 5.0 nm.

**Course F:** Start established by committee boat in vicinity of Willetts Creek to Flasher No. 7 off Oak Island Channel, leaving it to port; through center span of the Robert Moses Causeway to Flashing Green No. 11, leaving it to starboard; to Flashing Red No. 2 off Champlin Creek, leaving it to port; to Flashing Green No. 1 off Bayberry Point; leaving it to port; to Black and White Mo(A) in Great Cove, leaving it to port; return through center span of the Robert Moses Causeway to the finish line off Willetts Creek. Course distance: 10.9 nm. Shore Course \* distance: 10.0 nm.

## RACING PROGRAM – RACE COURSES

**Course B:** Start established by committee boat in the vicinity of Can No. 3 off Heckscher State Park; to Nun No. 10 off Bay Shore; to BW Mo(A) in Great Cove; to finish line near Can No. 3. Leave all marks to starboard. Course distance 6.4 nm.

If short course is signalled, substitute Flashing Green No. 1 off Bayberry Point for BW Mo(A). Short course distance: 5.6 nm.

**Course C:** Start established by committee boat in the vicinity of Can No. 3 off Heckscher State Park; to Flasher No. 3 in the Range Channel; to Nun No. 30 off Green Point; to finish near Can No. 3. Leave all marks to port. Course distance: 7.5 nm.

If short course is signalled, substitute Flashing Green No. 5 off Nicoll Point for Nun No. 30. Short course distance: 4.5 nm.

### NICOLL BAY COURSES

**Course A:** Start established by committee boat in Nicoll Bay; to Flashing Green No. 15 off Point o'Woods, leaving it to starboard; to Flashing Green No. 5 off Nicoll Point, leaving it to port; to Nun No. 10 off Bay Shore, leaving it to starboard; to finish line in Nicoll Bay. Course distance: 15.4 nm.

**Course B:** West Island Course. Start established by committee boat in Nicoll Bay; to Nun No. 10 off Bay Shore, leaving it to port, to Red and Black Quick Flasher off Saltaire, leaving it to port; to Flashing Red No. 8, leaving it to starboard; to Flashing Green No. 15 of Point o'Woods, leaving it to port; to finish line in Nicoll Bay. Course distance: 14.2 nm.

This course may be sailed in the opposite direction with all marks left on the opposite hand. For the West Island Race itself, there is a special starting sequence.

**Course C:** Start established by committee boat in Nicoll Bay; to Flashing Red No. 4 off Nicoll Point, leaving it to port; to Red and Black Interrupted Quick Flashing Green south of Patchogue Channel, leaving it to starboard; to finish line  $\frac{1}{2}$  mile north of Sailor's Haven. Course distance: 13.8 nm.

**Course D:** Start established by committee boat in Nicoll Bay; to Flashing Red No. 18 off Point o'Woods; to Flasher No. 31 off Blue Point; to finish line in Nicoll Bay. Leave all marks to port. Course Distance: 11.7 nm.

**Course E:** Start established by committee boat in Nicoll Bay; to Flashing Red No. 4 off Nicoll Point; to Flasher No. 31 off Blue Point; to finish line in Nicoll Bay. Leave all marks to port. Course distance: 11.9 nm.

**Course F:** Start established by committee boat in Nicoll Bay; to Flashing Green No. 5 off Nicoll Point, leaving it to starboard; to Flashing Red No. 2 off Champlin

## RACING PROGRAM – RACE COURSES

Creek, leaving it to port; to Flasher No. 3 off Point o'Woods, leaving it to port; to Nun No. 28 in Nicoll Bay, leaving it to port; to finish line in Nicoll Bay. Course distance: 9.5 nm.

**Course G:** Start established by committee boat in Nicoll Bay; to Flashing Red No. 18 off Point o'Woods, leaving it to port; to Red and Black Interrupted Quick Flashing Green south of Patchogue Channel, leaving it to starboard; to Flashing Green No. 1 off Howells Point, leaving it to port; to finish line east of Blue Point off Sayville YC. Course distance: 15.7 nm.

If short course is signalled proceed directly from Red and Black Quick Flasher to the finish line. Course distance: 9.2 nm.

**Course H:** Start established by committee boat in Nicoll Bay; to Flashing Red No. 4 off Nicoll Point, leaving it to port, to Nun No. 30 off Green Point, leaving it to starboard; to Flashing Red No. 18 off Point o'Woods, leaving it to starboard; to Flashing Red No. 2 off Champlin Creek, leaving it to starboard; to finish line in Nicoll Bay. Course distance: 12.9 nm.

**Course I:** Start established by committee boat to Nicoll Bay; to Flashing Green No. 5 off Nicoll Point, leaving it to starboard; to Flashing Red No. 2 off Champlin Creek, leaving it to starboard; to Flasher No. 31 off Blue Point, leaving it to port; to finish line in Nicoll Bay. Course distance: 16.2 nm.

**Course J:** Start established by committee boat in Nicoll Bay; to Flashing Green No. 5 off Nicoll Point to Flashing Green No. 29 in Nicoll Bay; return to finish line in Nicoll Bay. Leave all marks to port. Course distance: 3.3 nm.

## OCEAN COURSES

**Ocean Course A:** Start between committee boat and Buoy No. "4FI" off Fire Island Inlet; to Black and White Gong Buoy No. "J1" off Jones Inlet and return, leaving No. J1 to port. Course Distance: 26.5 nm.

**Ocean Course B:** Start between committee boat and Buoy No. "4FI" off Fire Island Inlet; to Nantucket Sea Lane Lighted Buoy "NB" and return, leaving Buoy "NB" to port. Course distance: 22 nm.

### *Notes on Ocean Race:*

1. Harbor start from Sore Thumb one hour prior to Warning Gun.
2. If adverse weather conditions necessitate cancellation of the Ocean Race the committee boat will signal abandonment at Sore Thumb one hour prior to the Warning Gun.

3. If the Ocean Race is abandoned, there will be a "Bay Race" if wind and weather conditions permit.

## RACING PROGRAM – RACE COURSES

**Bay Race Course A:** To Red and Black Quick Flasher off Saltaire; to Flashing Red No. 8, leaving it to starboard; to Flashing Green No. 15 off Point o'Woods; to Flashing Red No. 5 off Nicoll Point; to finish line between committee boat and Flashing Red No. 2 off Champlin Creek. Leave all marks except No. 8 to port. Course distance depending on start locale.

**Bay Race Course B:** Through Snakehill Channel to Nun No. 6; to Mo(A) to Great Cove; to Can No. 3 off Heckscher Park; to finish line between committee boat and Flashing Green No. 11 off Brightwaters. Leave all marks to starboard. Course distance depending on start locale.

### SAYVILLE COURSES

**Course A:** Start established by committee boat  $\frac{1}{2}$  mile South-East of Brown Point; to Flashing Green 29 in Nicoll Bay, leaving it to port; to finish line off Brown Point. Course Distance: 5.6 nm.

**Course B:** Start established by committee boat  $\frac{1}{2}$  mile South-East of Brown Point; to Red and Black interrupted Quick Flashing Green in Patchogue Bay, leaving it to port; to finish line off Brown Point. Course distance: 4.2 nm.

**Course C:** Start established by committee boat  $\frac{1}{2}$  mile South-East of Brown Point; to Flashing Green No. 1 off Lone Hill; to Flashing Green No. 29 in Nicoll Bay; to finish line off Brown Point. Leave all marks to starboard. Course distance: 7.6 nm.

**Course D:** Start established by committee boat  $\frac{1}{2}$  mile South-East of Brown Point; to Flasher No. 1 off Watch Hill Channel; to Red and Black Interrupted Quick Flashing Green in Patchogue Bay; to finish line off Brown Point. Leave all marks to port. Course distance: 5.8 nm.

**Course E:** Start established by committee boat  $\frac{1}{2}$  mile South-East of Brown Point; to Flashing Green No. 1 off Lone Hill, leaving it to port; to finish line off Brown Point, Course distance: 4.3 nm.

**Course F:** Start established by committee boat  $\frac{1}{2}$  mile South-East of Brown Point; to Flashing Red No. 18 off Point o'Woods; to Flashing Green No. 5 off Nicoll Point; to finish line off Brown Point. Leave all marks to starboard. Course distance: 9.1 nm.

**Course G:** Start established by committee boat East of Blue Point; to Flasher No. 31, leaving it to starboard; to Flashing Green No. 5 off Nicoll Point, leaving it to port; to Flashing Green No. 1 off Lone Hill, leaving it to port; to finish line off Blue Point. Course distance: 12.5 nm.

If short course is signalled, substitute Nun No. 30 for Flashing Green No. 5. Short course distance: 9.4 nm.

## RACING PROGRAM – RACE COURSES

**Course H:** Start established by committee boat in vicinity of Flashing Green No. 1 off Howells Point; to Flashing Red No. 32 off Swan River, leaving it to port; to Flashing Green No. 1 off Lone Hill, leaving it to starboard; to Nun No. 2 off Patchogue River, leaving it to starboard; to finish line off Howells Point. Course distance: 13.5 nm.

**Course I:** Start established by committee boat in vicinity of Flashing Green No. 1 off Howells Point; to Flasher No. 31 off Blue Point, leaving it to port; to finish line off Howells Point. Course distance: 8.4 nm.

### WATCH HILL COURSE

**Course A:** Start in vicinity of North end of channel to Watch Hill; to finish at or near Nun 10 at the entrance to the West Channel. Distance: 10.1 nm.

---

### SBCC SAFETY INFORMATION

The safety of a vessel and her crew is the sole and inescapable responsibility of the skipper, who must do his best to ensure that the yacht is fully found, thoroughly seaworthy, and manned by an experienced and physically-fit crew. He must be satisfied as to the soundness of hull, spars, rigging, sails and all gear. He must ensure that all safety equipment is properly maintained and stowed, and that the crewmembers know where it is kept and how it is to be used. He must have all safety equipment required by the U.S. Coast Guard and, if racing, he must have the racing equipment suggested by the United States Yacht Racing Union (USYRU). The South Bay Cruising Club disclaims any liability for the seaworthy condition or operation of a yacht or the safety of its crew, for which the owner has sole responsibility.

It is the exclusive responsibility of each skipper to decide whether or not to start, continue, or drop out of any event. The South Bay Cruising Club does not assume any liability for the decision of any participant. Because of the increased costs of all vessels and the tendency to litigate all accidents, whether liability exists or not, the Board of Governors of the South Bay Cruising Club recommend that all owners and skippers carry liability as well as hull insurance to protect all parties from the financial consequences of an accident.

The Boat Safety Package which prescribes the minimum U.S. Coast Guard requirements may be obtained by writing:

**Commander, Third Coast Guard District,  
Governor's Island, NY 10004**

The USYRU Offshore Rating Council publication "Special Regulations Governing Minimum Equipment and Accommodations Standards" may be obtained by writing:

**U.S.Y.R.U.  
P.O. Box 209  
Newport, RI 02840**

## THE YEAR IN REVIEW

**Super! SUPER! SUPER!** That's the only way to describe the SBCC's 1979 under the super leadership of Commodore Richard "Super" Nehring. His obvious enjoyment of every social set the pace for the entire membership.

Some of the more noteworthy events of the year included: the significant extension of the Club's cruising ground by 12 hardy yachts who voyaged to the Chesapeake; a Great River week that proved beyond a doubt that while the days of wooden ships may have passed, iron men (and women) can still be found; and the presence of a white whale in the Inlet.

1979 got off to its official start on January 12 at the Annual Meeting with the re-election of all incumbents. Also, Bill Rottkamp and Bruce Kennedy presented beautiful cut-crystal racing trophies to the deserving skippers, while Bill Dwyer presented some other awards to an equally deserving, albeit somewhat more modest, group of captains, i.e.: the Good Shepherd Award, Part A, the Shepherd, to Bob Sheppard, and the Good Shepherd Award, Part B, the sheep to Ron Peterson. Also, the Captain Crunch and the prestigious "Blockhead" awards were assigned.

Finally, four of our sister clubs on the Bay lugged over some silver and we made off with more than our fair share from the Babylon Yacht Club, Great South Bay Yacht Racing Assoc., Long Island Yacht Club, and Sayville Yacht Club.

February slipped by broken only by the Mid-winter Bash at LaGrange. Dinner and dancing were, to coin a phrase, super.

March came in, not with a lion's roar, but a SBCC bash — again at LaGrange for the annual Cruise Meeting. The Cruise Awards were dispensed to the deserving amid the cheers of 350 members and guests. Likewise the Great River Week Race Committee Awards. Following a vicarious sail 'round the world for the Whitbread Trophy (the film supplied by Ken Kondor), we talked and talked far into the night about the upcoming Chesapeake Venture Cruise (a Club first) and the Nantucket Ho Cruise. The most-heard phrase, "C'mon summer!"

April was spent painting and scraping, varnishing and scraping and scraping and scraping in preparation for the summer.

May meant Commissioning Day. But just to get in the right spirit, we held the Spring Cocktail Party at the Bay Shore Yacht Club. This was attended by over 200, strongly committed to food, booze, song and fellowship.

Then, in mid-May, a great program was given at Timber Point by the Education Committee on subjects that ranged from "What a race is" (with some expert commentary on what a race isn't) to "fun on the rode with children."

Commissioning Day was well attended and the Entertainment Committee did their usual superb job with plenty of food, beer, setups, beer, ice, beer, heros, franks, beer, coffee, cake and beer. Father Langley blessed the fleet, Flag Officers were introduced, Commodore Nehring welcomed all members and the new season was officially under way.

June was busting out all over and the serious sailing was now well under way. To date, the racing scene was: eight stalwart souls had braved dirty easterly winds for the Tune-ups. Bill Cook said sailing north *between* the two Robert Moses bridge spans is easy. It's the turning around and sailing south that's the tricky part. The

## THE YEAR IN REVIEW (Cont'd.)

LIYC Invitationals followed. Then the Creepstakes with Volker Kind taking under 30' honors and Bob Dunlap the over 30' class. Next, Novice Day, followed by the Spring Ocean Race, some of whose participants were followed by a white whale. The Smith Trophy was taken by Chanson, Capt. Baldwin in command (Spin.), and Magic, with Bob Sheppard (Non-Spin.)

July will be fully reported via the logs of the Blue Norther (Chesapeake), Nancy II (Nantucket) and Cirrus (between the Forks).

The month of August is Great River Week. And oh! what a week it was!! But the rain and wind and cool (cold?) weather did nothing to dampen anyone's spirits. From the Champagne Breakfast, which despite the rain had 118 boats present and accounted for, to the Great River Blast, it was nothing but "party as usual."

The Entertainment Committee worked and worked serving so much London broil, corn, hot dogs, beer, rolls and other good stuff (did we forget to mention beer?) that no one even noticed the rain and wind and cold.

And here, from the log of the Blue Norther, an official report of Great River Week plus an interesting little piece from Roger Ramsdell about our "little old bay."

**GREAT RIVER WEEK 1979**, is now history, but it certainly proved to be an exciting week for the hardy bunch of sailors who stayed in the River all week.

Some of us arrived in a rather battered state, and again, that little dear called dink, hanging on the stern of most yachts, was the culprit. "Lena" lost hers, only to recover it later from a clammer, and "Capriole's" decided to try to go under the stern of the mother ship. Capt. Jens had to don his life jacket, jump in the water, and retrieve all the loose gear which was floating away. We are sure he gave his guests the impression that all this is really every day routine in the life of a sailor!

All these problems were caused by no less than a 40 to 60 knot squall which came through Friday afternoon, and a steady Nor'Easter Saturday and Sunday which repeatedly sent the needle over 30 knots for 48 hours. Quick action and smart boat handling brought all yachts in safely without serious damage or injuries. This was the same weather front, which in four days moved across the Atlantic, intensified, and raised such havoc with the Fastness Race.

What was nice for the West Island Race, was not necessarily nice for the Champagne Breakfast. We were faced with the prospect of rafting in a 25-30 knot Nor'Easter, on a lee shore. But Champagne Breakfast is Champagne Breakfast, so we did get a few medium-size rafts together, with a weather eye cocked at the anchors. A few "Chinese fire drills" were observed, but that did not keep the champagne corks from flying. By dark the rafts were breaking up to batten down for another stormy night, and many a "charlie noble" had smoke coming up from a cozy fire down below. This certainly must have been a first for Great River Week and August 12th to have to light a fire in the stove to keep warm, (but it sure felt good.)

Monday morning brought a clearing sky with bright patches of blue between white puffy clouds, A perfect morning for hot "Coffee On The Raft", but what do we have but cold, "Bloody Brunch On The Raft." Last year the first mates in the galley nearly wilted cooking all that hot coffee so we decided to have something cool instead. So, what do we have now but a morning with the temperature in the

## THE YEAR IN REVIEW (Cont'd.)

mid fifties! Don't ever try to second-guess the weather machine. Just the same, the Bloody Marys did have it over the coffee by 2 to 1. After the brunch we got down to serious business, with the Racing Skippers' meeting and the first race. The racing for the first four days was nothing less than fantastic. With strong gusty winds from the northerly quadrant on Monday, Wednesday, and Thursday, and even stronger southwesterlies on Tuesday, we had no lack of wind. The Bay was delightfully clear, and the temperature was brisk. It felt more like September than August. Friday was the only light air day, with the leaders falling into a hole right at the finish line. The southwester finally filled in about 1600 hours and enabled the rest of the fleet to enjoy a wing on wing run home. With approximately 17 boats racing every day, all in non-spinnaker class, we had plenty of good boats out there, and the competition was keen.

The competition back in the River for our rowing and sailing dink racing was just as keen as the big boys. With Capt. Ramsdell in charge of rowing on Tuesday, and the Capts. Nehring and Wieda in charge of the sailing on Thursday, everybody had a good time. Prizes were given out to the winners. *Rowing Races*: Class A (Children 0-12) — 1st, Billy Dobbelaer; 2nd, Glenn Graham; 3rd, Peter Davies. Class B (Boys 13-16) — 1st, Voelker Stammnitz; 2nd, Roger Holzmacher; 3rd, Bob Schultz. Class C (Girls 13-16) — 1st, Jackie Layton. Class D (Men 17-90) — 1st, Ollie Davison; 2nd, Dick Nehring; 3rd, Al Wieda. *Sailing Races*: Class A (Men) — 1st, Dick Nehring; 2nd, Bob Schultz; 3rd, Glen LaMartre. Class B (Ladies) — 1st, Gerda Lampe; 2nd, Cathy Layton; 3rd, Jean Deutch. Class C (Boys) — 1st, Dirk Stammnitz; 2nd, Voelker Stammnitz; 3rd, Russell Stott. Class D (Girls) — 1st, Karen Stammnitz; 2nd, Jackie Layton; 3rd, Susan Deutch.

By now the South Bay Cruising Club has perfected the art of the Sing-Along, as witnessed by our Tuesday night session. The first ingredient needed is a clear starlit night — we had it. The second, is talented musicians — we had them. The third, is enthusiastic singers — we had them too. The fourth, is beer to wet the whistle — Marty, did we have beer? (Ed Schecker, please teach Marty the Cruising Club Song.)

Wednesday morning we rounded up the kids for a field day in the park. We had relay races, three and four legged races, wheelbarrow races, egg rolling and throwing (not hard boiled), and a grand Tug-O-War to end it all. The kids were paid off in candy bars. The winners: — 1st, Bill 13; 2nd, Glenn 11; 3rd, Bryan 10; Bonny 10; 4th, Kirk 9; 5th, Glenn 6; 6th, Yvonny 4, David 4, Dirk4; 7th, Nancy 3, Jackie 3; 8th, Pete 2, Andy 2. (Sorry kids, no last names.)

Wednesday night we again headed for the Park loaded with goodies for our Cook-out. We were all well protected against the blustery north winds, and the heat from the cooking fires really felt good. We had corn, hamburgers, hot dogs with many trimmings from the garden. After a small sing-along we abandoned the beachhead without sighting one single enemy, the mosquito. It was too cold for them.

Our Commodore's Dinner Party at the Snapper Inn could not have been more perfect. The weather was one of those clear sparkling evenings with a golden light setting off all the bright colors to perfection. The impressive fleet of yachts

## THE YEAR IN REVIEW (Cont'd.)

anchored in the River can really be appreciated from the Snapper Inn lawn and provided a wonderful background for our evening. We all had a delicious meal, and the evening can only be described as "SUPER". Thank you Commodore Nehring.

We just managed to squeeze in our Canal Dink Ride and the race on Friday before the weather started to deteriorate again! By Saturday morning it looked very threatening, and by race time it was raining. We, the Cruising Committee, herewith apologize to you, the Entertainment Committee, for running out of good weather and sunshine. It did seem a little unfair, but The Blast must go on. We again put on our foul-weather gear, and being the crazy people we are, stood out in the rain and wind to eat our steak and trimmings. Everything was superb (especially the corn) and what's a little water on a sailor?!

### EXCITING MOMENTS ON THE BAY — 1979

The Log says August 10, yes, that was a Friday. The Captain and crew were going to Great River Week or as the old timers still call it, Raceweek.

The sloop, Nancy II, well equipped, left Amityville with Roger and Isabelle Ramsdell, Linda and her friend Anna Louise. We were towing our Dyer Dinghy.

The wind was our usual old South Bay breeze, SW at 15 knots. As we were leaving at 1530, we had all afternoon and evening to make the River. So we rolled out the jib. The jib caught at approximately three quarters open. That is fine in this breeze, forget it.

An so we sailed East. "Look ahead," "Yes, that's the Lady Lynn, under jib alone." "Hey, over to Port, there's Dmitri - full sail I'll bet. Is, I'd like another Martini, please." "Is that the Capriole? Yeh."

But the wind piled up 20 knots, 30, 40, there were later reports of 60. The seas started to mount up, the skies became black and the winds howled. "We can't see the Captree Bridge!" Life jackets were handed to all hands.

Roger was at the tiller holding on for life. Anna Louise was put between him and the knot indicator on the bulkhead. "Read out the speed," he howled. Linda and Isabelle were ably handling the flaying jib sheets. Our jobs were to keep Nancy II upright, pointing East, our hope to get behind Nicoll Point.

The huge seas behind us grew larger, but the dinghy, cleverly held closely astern on a bridle, only loomed up at us, but caused no damage. During it all, a high pitched clear voice called "6 knots, 7 knots, eight my God" and so we sped over wave tops for 20 minutes. Then - whap - and a wave pooped over our transom.

As we approached Nicoll Point, the wind subsided. No damage, we were lucky and so in a lovely Southwest breeze we entered the River. "Is, I would enjoy one of your delightful Martinis." Isabelle, that great lady, broke into her usual lovely smile.

We later learned that Fred Eggerstedt really had trouble. He skillfully beached his boat and saved both vessel and skipper. South Bay Skippers have to have both ability and courage.

It is really surprising just how "wild" our "little old bay" can get sometimes.

## THE YEAR IN REVIEW (Cont'd.)

September and summer wanes. The Family Race — Watch Hill Rendezvous attracted 83 boats and meant an end to 700 hot dogs, 40 lbs. of potato salad, 25 lbs. of Jutta Stammnitz's home cooked sauerkraut and something in excess of a six pack of beer.

The Cruising Club Crock was awarded to Flighty Miss and Harry Colleran for best SBCC corrected time in the Around Long Island Race. The Fall Ocean Race was supervised by the white whale, and the weather (10-18 kt NNE breeze with 5-6' seas) provided some other exciting moments.

October came and there was the U.S. Coast Guard warning us if Halloween was here, could Jan. 1 and the Headless Head be far behind?

A great presentation on marine insurance was put together by Roy Van Nostrand and Marty Kind. In our litigious society it's something we should all know about. Also a great Fall Cocktail Party, with Halloween decor, good food and even better company. A nice time to savor all the wonderful things summer offered.

November and December — Over 200 to the Commodore's Christmas Party at the Bay Shore Y.C. Good Cheer. Then more good cheer. Then even more good cheer. Finally, a great cheer as jolly old St. Nick made his second SBCC appearance. Someone was heard to say that it was a great party.

1979 ended on a somber note with the passing of one of our Honorary Life Members, Hervey Garrett Smith. He was our 1st Vice-Commodore, our 1st Regatta Chairman, and our 1st Fleet Captain. He designed the SBCC Burgee and devised the reversible West Island Race. A marine historian and artist of international repute, a founder of the Suffolk Marine Museum and the author of many books on sailing and sailboats.

*Requiescat in Pace.*



### CHESAPEAKE VENTURE CRUISE

*From the log of Blue Norther, July 1979, Dick and Gerda Lampe*

#### The Way Down

Saturday, June 30.

Weather: Cloudy, wind southeast, 10-15 knots.

0510 — depart Fire Island Inlet. The Chesapeake Venture Cruise started in the pre-dawn hours of Sat., June 30 with seven boats departing from Robert Moses Basin: Juniper, Sea Dream, Courageous, Memory, Karma, Wanderlust and Blue Norther. Four boats departed from Jones Inlet: Capriole, Misty, Barcarolle and Sea

## THE YEAR IN REVIEW (Cont'd.)

Sprite. One boat, Sinn Fein left from Fire Island Inlet on Sunday. Surprisingly, the inlet was quite rough. So we got a good bouncing, a taste of salt water when our bow went through a green wave and a friendly farewell poke from the white whale. Sail to Manasquan was easy and the inlet no problem. By 1330 hours we were all safely secured at the Brielle Yacht Basin.

Sunday, July 1.

Weather: Cloudy, wind south 15-20 knots.

0620 — depart Brielle Yacht Basin. Tide was running at a good clip and getting off the dock was a little tricky, but we all managed o.k. The inlet was again no problem but the Manasquan stinkpotters are crazy. We found the ocean lumpy, the wind right on the nose and the seas confused. We settled into a long, hard day to windward. By early evening we began to pick up the high buildings of Atlantic City, cleared the inlet with no problems and were all tied up or anchored off the State Marina by 2030 hours. We were much too tired to have any interest in the bright lights downtown so we had a quick dinner and hit the sack.

Monday, July 2.

Weather: Again cloudy, wind south 20-25 knots.

0810 — depart Atlantic City Marina. The ocean was rough and choppy and even with the security of a harness it was hard to keep a foothold. The sailing was exciting, but forward progress was slow. By 1500 hours the wind had increased to 25-30 knots with a veering tendency to the north west. Most of the fleet shortened sail and made good progress towards Cape May Inlet. The Inlet was very safe and could probably be negotiated in all but the most severe conditions.

1700 hours found most of the fleet secured at the Cape Island Marina, near Fisherman's Wharf. This is a very pretty section of Cape May Harbor with small houses built right over the water and a large fleet of trawlers tied up to the adjacent docks. We ate a very late dinner at the Lobsterman and passed out.

Tuesday, July 3.

Weather: Bright and clear, wind northwest and fresh.

0610 — depart Cape Island Marina. By this time we were all pretty tired of slogging to windward, and those strong southerlies of the last two days would have looked pretty good to us. But instead we now had strong north-westerlies. The trip through the Cape May Canal was pleasant, but the pleasantness ended as soon as we passed the Ferry Terminal. The chop was short and steep and the going rough. Three boats had stayed in Cape May, four boats turned back to Cape May and three boats made for the Cohansey River on the eastern shore of the Delaware Bay. The four remaining boats continued on. After about three hours, conditions moderated and we were able to continue under more favorable conditions. We found the trip through the D & C Canal interesting as several large ships passed us by.

1900 hours — we anchored in the Chesapeake City Mooring Basin and less than an hour later the very tired but still "courageous" Wiedersums arrived. We wasted no time to heed the call for Happy Hour from Capt. Bob on Wanderlust, and certainly enjoyed the nice relaxed feeling of knowing that the hardest part of the trip was behind us, and the wide Chesapeake before us.

## THE YEAR IN REVIEW (Cont'd.)

### In the Chesapeake Log 290.10

Wednesday, July 4.

Weather: Clear morning with steadily increasing cloudiness.

1050 — depart Mooring Basin. From this location the canal continues to get wider and wider until it runs into the upper reaches of the Chesapeake. By early afternoon the wind was quite strong and a cold rain had begun to fall. In addition to the deteriorating visibility, we were having problems identifying the bouys as the numbers did not agree with the numbers on our chart. In accordance with the numbers, we were already past our destination, and that would have meant a hard beat back. Finally, we were able to identify the headland at the entrance to Stillpond Creek. We knew Barcarolle was already safely inside, but the entrance looked tricky . . . and it was. A close pass to the beach in a very narrow channel, and a sharp turn to port and we were inside the small anchorage just behind the Coast Guard Station. We probably would not try this again, but it was comforting to have the men in blue there.

Thursday, July 5.

Weather: Clear and cool, wind northwest and fresh at 20-25 kts.

1150 — depart Stillpond Creek. Barcarolle, Courageous, Wanderlust and Blue Norther all cleared the entrance without mishap. We joined up with Misty and Capriole right outside the Stillpond Creek entrance, and with the rest of the fleet ahead of us, we had a fantastic romp down the Bay, surfing to 8 knots, but it was a tough job for the helmsman.

1430 hours, we entered Turkey Cove on Gibson Island and dropped our hook in the prettiest cove you would ever want to see. Our fleet was down to ten, as Courageous and Barcarolle left for Annapolis. We took a nice swim, had a fine cocktail hour and then dinner was served for ten aboard Blue Norther, in honor of our crew, Herbie, who was heading north the next day.

Friday, July 6.

Weather: Sunny and bright and a nice cool morning.

1100 — depart Gibson Island. Sinn Fein's senior captain and first mate have departed and headed north for a wedding, and Capt. Bill has taken command, and he is not to be taken lightly.

1800 hours — we made our way into Harness Creek to find that Capt. Bill was there first and securely anchored fairly close to the shore. We stayed out a little further for fear of bugs but once again there were none. This was a beautiful spot in a wide bend of the river with big trees right down to the water's edge. We again enjoyed a nice swim and another quiet night.

Saturday, July 7.

Weather: We woke up to a clear, brilliant morning with a chorus of bird song coming from the trees on the shore. The wind is light and northwest.

1015 — depart Harness Creek. In a hopeful mood we set all sails but found very soon that there just was not enough wind. The wind stirred a little at the river entrance, and we proceeded at a leisurely pace to the Eastern Shore of the Chesapeake Bay.

## THE YEAR IN REVIEW (Cont'd.)

1435 hrs. — we entered the mouth of the Wye River. This is a beautiful, wide, winding river with numerous bays and bends in which to anchor. The shores have many beautiful homes surrounded by tall trees.

1535 hrs. — we anchored at the Wye River Narrows in 8 feet of water near the South bank. The one boat that was there already departed in a hurry at the sight of ten boats suddenly appearing around the bend. We enjoyed another great swim as there was still no sight of the dreaded sea nettles.

Sunday, July 8.

We are awakened by the chuck-chuck of a waterman running up and down his crab lines laid out in the river. The line is anchored at each end by an old automobile engine. Every ten feet or so is tied a piece of eel, and this is run over a small roller attached on the side of the hull, as the boat is slowly eased forward. One man steers the boat, and the other nets the crabs as they appear and just dumps them into the boat. Blue Norther's dinghy was made ready, manned by the first mate, and after some fast rowing and some even faster talking, we managed to talk them into selling us some crabs. We got a dozen of the biggest crabs we ever saw, measuring 12 inches from claw to claw, and are they mean critters to handle. We passed some out among the fleet, and they turned out to be the best jimmies we ever had.

1415 — depart Wye River anchorage.

1630 hrs. we dropped the hook outside the harbor of St. Michaels right near Karma. The rest of the fleet are scattered in and around the harbor. We had a swim with Rudy and Marlene Wiehl, and then we headed for town to have dinner at the Crab Claw. This is really a fun place. Huge trays of blue claws are just dumped in a pile in the middle of the table, and the diners attack these with small wooden mallets. After all the banging cracking and eating, there is quite a mess left on the floor but this is just swept away by the broom man. St. Michaels is a very pretty town with large white houses under big shade trees — a little bit like Edgartown on Martha's Vineyard. The museum is well worth a visit as it houses many interesting items depicting the history of the Chesapeake, the oyster and crabbing industries and the hunting history.

Monday, July 9.

Weather: Another day of clear, sunny weather with a nice cool morning breeze.

1130 — depart St. Michaels Harbor. We are Kent Island bound and looking forward to our arrival. We were welcomed at the dock by Commodore Nehring and his company. All are overwhelmed by the stunning beauty of this place. The large stone house is set in the center of a huge lawn bordering right down to Warehouse Creek. At cocktails we were graciously invited inside to partake in a catered roast beef dinner with all the local trimmings and offered all the drinks we could handle served up by a very charming bartender lady. After supper, we found a piano in the living room and Judy Goldsmith played for three hours while we sang and danced to a good old-fashioned SBCC Sing Along Party in a setting we will never duplicate. To add to the perfection of the evening the moon was full over Warehouse Creek and we wished the night would never end.

## THE YEAR IN REVIEW (Cont'd.)

Tuesday, July 10.

Weather: Partly cloudy, warm.

This was a layover day and we spent the time swimming, eating crabs, shopping and walking around the plantation grounds. Our stay here has certainly been the highlight of our cruise and we will never forget it.

Wednesday, July 11

Weather: Clearing skies, hot, humid and no wind.

0920 hours and we sadly departed Batt's Neck Plantation. We enjoyed a little sailing but when the wind stopped we jumped in for a swim and then continued under power. Proceeded to Trippe Creek on the Tread Avon. This must be one of the most beautiful rivers on the Eastern Shore, but we have found many that fit that description. On almost every channel marker there is an osprey nest boasting one or two nestlings. If you get too close to them the mothers and fathers squawk loudly and fly around in angry circles. Arrived in Trippe Creek at 1745 hours and immediately formed a cocktail raft. Enjoyed a very late dinner in the cockpit under the moon. Since our arrival on the Chesapeake we have taken most of our meals in the cockpit as it was much too hot down below, and we were never bothered by any mosquitoes.

Thursday, July 12.

Weather: The morning is hot and hazy. Thermometer reads 98 degrees in the winch pocket and 82 degrees in the water.

1045 hours — departed Trippe Creek under 170%, sun awning and mizzen. A standard Chesapeake lunch was served in the cockpit with a spot of tea. (to the uninitiated this consisted of crabmeat salad with cool wine.)

1515 hrs. — arrived at La Trappe Creek on the Choptank River. We anchored just inside a small sandy hook and immediately the dinghies were launched and we converged on the beach for a splash and a walk. We then all made for Wanderlust for the Happy Hour call with a total head count of 32 people. We were 11 boats at La Trappe Creek as Memory had gone north.

Friday, July 13.

Weather: The morning was hot and humid.

Several of our dinghies made exploratory trips up the creek which is navigatable for large boats for several miles. Again we found the typical Eastern Shore setting with large estates and farms right down to the water surrounded by many wooded areas.

1315 hrs. — departed La Trappe Creek under a light southwesterly wind. Up until this time we had been watching daily for one of the infamous Chesapeake thunderstorms, but so far we have been lucky. However, it was Friday the 13th, and our luck ran out. The sky turned an ominous copper color which was definitely moving in our direction. We'd read that the Chesapeake strategy for handling line squalls is to strike all sails and power into it, so this is what we did. The storm was not nearly as bad as it looked.

1630 hrs. — arrived at Dunn's Cove as several more storms passed through the

## THE YEAR IN REVIEW (Cont'd.)

area but none of them were a direct hit on us. Sea Dream has proceeded to Chesapeake City and we are 10 boats.

Saturday, July 14.

Weather: Hot, and humid, wind northeast 9 knots.

0935 hrs. — departed Dunn's Cove heading south under power and at 1030 hrs. — cleared Knapp's Narrows. Within this narrow cut through the peninsula are berthed many authentic oyster and crabbing boats, so it is a very picturesque passage as long as the narrowness does not bother you. On the way into the Big Island anchorage we had been hailed by the Beyers aboard Lorien en route from Long Island to their retirement home in North Carolina. After the storm passed we spent an enjoyable hour hearing all about their voyage and their future home. This is a very beautiful anchorage.

Sunday, July 15.

Weather: Cloudy and hot, wind north-northeast, 6 knots.

1010 hrs. — departed Rhode River anchorage on a freshening breeze and we were able to sail along at a nice speed. Entered the Severn River at 1445 hrs. As we proceeded up the river past the Naval Academy we were hailed by a group of sight-seers on the dock. They turned out to be the Capriole crew on shore leave. The Severn River is just spectacular with high rocky banks on which there are many beautiful homes. Off the main river are many small creeks all boasting their own large fleet of sailboats and there was much water-born activity.

1620 hrs. — we dropped our hook in Little Round Bay off St. Helena Island, which reminded us of Lake George or Lake Champlain. We were joined by Courageous and Misty while the rest of the fleet stayed in Annapolis.

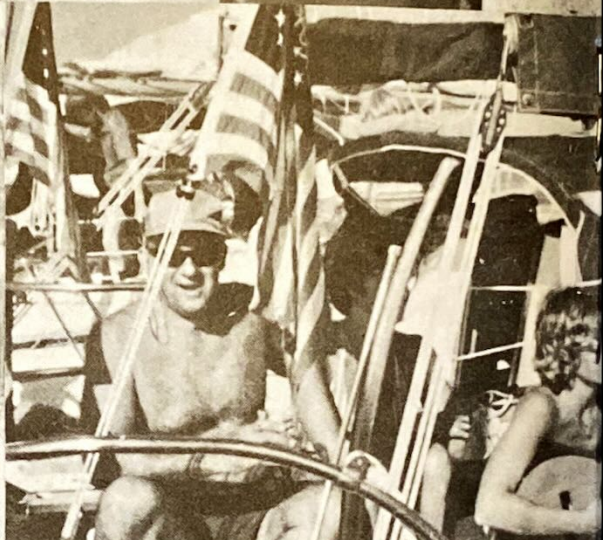
Monday, July 16.

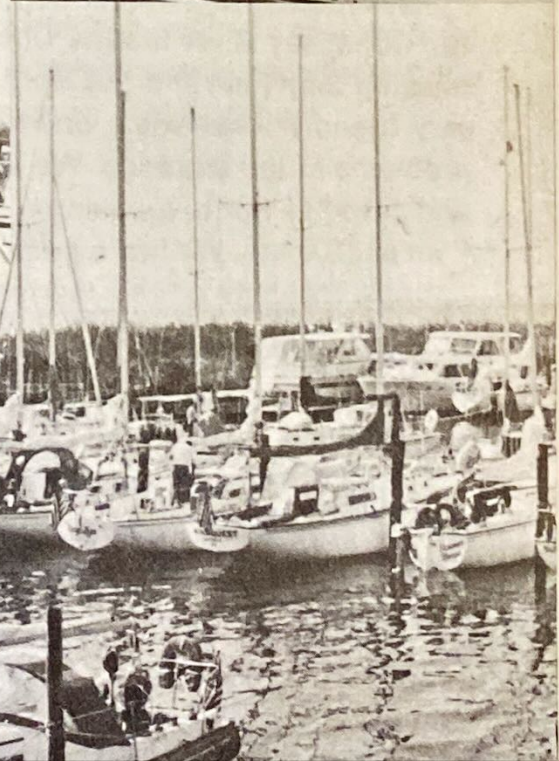
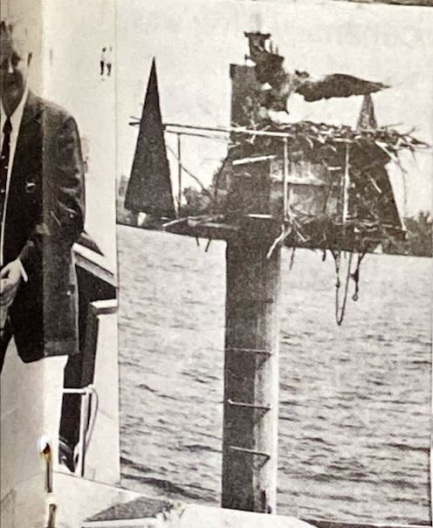
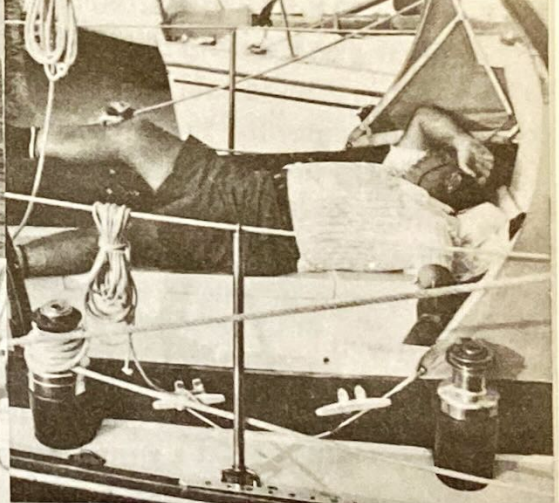
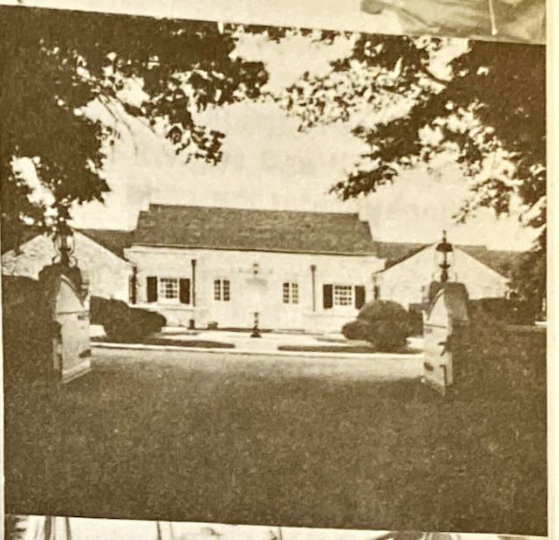
Weather: Sunny and hot.

0910 hrs. — departed Round Bay on the Severn and arrived in Annapolis at 1000 hrs. to take on fuel, ice and water at the dock. We then dropped the hook in the harbor and went to shore by dinghy. (We could have obtained a very reasonable slip at the Municipal Dock, which is metered and available on a first come first served basis.)

1330 hrs. — departed Annapolis. As there was little or no wind, we again had to resort to the iron jib as we had quite a long trip ahead of us to the Chester River.

1950 hrs. — we anchored in the Corsica River, a tributary to the Chester, and is in itself a large river. Here in the Chesapeake there is nothing as small as Great River. We found Barcarolle, Wanderlust, Courageous, while Capriole, Sea Sprite and Sinn Fein entered the Langford Creek on the other side of the Chester. This area is of great interest to Fred and Fairfax Wiedersum as her family's ancestral home stands here on the banks of the Emory Creek. Fairfax has been able to trace much of their history right down to the pews occupied in church, marriage dates and a lot of other interesting information. Sea Dream, Karma, Misty and Juniper have gone ahead in order to gain an extra day for the trip home.





## THE YEAR IN REVIEW (Cont'd.)

Tuesday, July 17.

Weather: Sunny and hot.

0835 hrs. — departed Corsica River under power. At 1030 hours we were able to shut down the engine and carry on under sail at about 3½ to 4 knots on a northeast wind at 10 knots. Entered the Sassafras River at 1600 hrs. Anchored approximately three miles up the Sassafras in a nice sheltered cove behind a sandy point. The time was 1730 hours. Sea Sprite, Sinn Fein and Barcarolle are anchored closer to the mouth of the river and Capriole, Wanderlust and Courageous are here with us. It was time to get the boat squared away for our trip home so we deflated the Avon, bagged it and stuffed it in the locker. We watched Capriole's crew deflate their dinghy under the cone of the spreader lights in which there were thousands of winged creatures flapping around. We hit the sack early as we had a very early departure time the next day.

Log: 659.57

### The Run Home

Wednesday, July 8.

Weather: It was a little hard to tell at 0400 hrs., but it was foggy and hazy, visibility about ½ mile.

0500 hrs. — departed our anchorage on the Sassafras River in the dark and had only the comforting blinking at the end of the channel to guide us. However, we felt good as Wanderlust was in the lead. We were not able to see the boats outside due to poor visibility, but we assumed they would follow the float plan.

0825 hrs. — have Chesapeake City abeam and proceeded through the Canal without any problems. Delaware Bay was not so bad this time and we even had some wind, even though it was southwest, but at least we could get some sailing in. By early afternoon we were beginning to realize that finding Cohansey River was not going to be so easy. After several approaches to the shore, we were finally able to locate the tiny little red thing that the Cruising Guide called a buoy, and now at least we knew we had cleared the shoal. Once inside the River, (it is very deep with curvy winding banks and really a lot of fun to sail in) the current was swift.

By 1700 hours, Wanderlust, Capriole and Courageous were in and we tied up to the Cohansey River Marina Dock. Barcarolle is already there and now we are only missing Sinn Fein and Sea Sprite. We all had our problems finding our way in, but a very friendly local voice on the radio helped our late arrivals to understand the problems at the entrance. We enjoyed a well earned Happy Hour aboard Barcarolle and gave Sea Sprite a welcome cheer when she arrived at 1900 hours. Same to Sinn Fein at 2100 hrs. We had a great dinner at the restaurant on the premises and we can strongly recommend this marina for their friendly service and very clean facilities.

Thursday, July 19.

Weather: Fog, haze, wind 10-15 knots northeast.

0700 hrs. — departed Cohansey River for a great sail down the Delaware Bay.

1400 hrs. — arrived at Cape May Harbor and most of us dropped our anchors in the outer harbor.

## THE YEAR IN REVIEW (Cont'd.)

Friday, July 20.

Weather: Fog and haze, but the sun was trying to burn it off.

0600 hrs. — departed Cape May Harbor. The wind was light from the southwest.

1730 hrs. — we arrived at the State Marina at Atlantic City and made for Sea Sprite for the Happy Hour. After cocktail hour we headed downtown by taxi to have dinner at the Knife and Fork and to take in the Casino sights. The restaurant is an old landmark in Atlantic City in a place where everything is being torn down to make room for more hotels and casinos. It was very charming and we had a lovely dinner, all arranged by Capt. Fred, of Courageous. If you have any romantic notions of Atlantic City, forget them, the romance is gone.

Saturday, July 21.

Weather: Haze and fog with light rain, wind southwest at 5 kts.

0605 hrs. — departed State Marina at Atlantic City. By mid-morning the wind had increased to 10-15 knots and we were making good progress.

1645 hrs. — arrived at Manasquan Inlet and, as we found our planned anchorage just impossible due to boat traffic, we proceeded up the river to the King's Grant Marina in the company of Wanderlust, Courageous and Capriole. The powerboats were three stories high and we felt very small.

Sunday, July 22.

Weather: Sunny and warm, wind light from southwest.

0730 hrs. — departed Manasquan Inlet while we watched in horror as two men in a canoe tried to paddle out the inlet. By late morning we picked up a good breeze and by the time we arrived at Fire Island Inlet we were sailing along at 6 to 7 knots just trying to hold our own and just a little overcanvased with our 170% up.

1700 hrs. — arrived at Fire Island Inlet. By the time we reached Great South Bay we had a gusty southwester blowing and even the 120% was too much. We knew that we were back home and that our light-air sailing was over for a while.

1900 hrs. — arrived at our Home Dock.

**Log: 968.19**

This trip required a lot of planning and a lot of effort on the part of everyone, whether captain, first mate or crew. It was a very rewarding cruise in that we were able to explore a new area to our Club and we all wholeheartedly recommend the Chesapeake Bay for some of the greatest cruising you can find anywhere.

## NANTUCKET HO CRUISE

### *Narrative by Roger and Isabelle Ramsdell of Nancy II*

This cruise began in February! A little early, yes, but it all started at a meeting in the home of the Fleet Captain, Dick Lampe, and his lovely wife, Gerda. The committees were drawn up for the various cruises.

The Nantucket Cruise Committee consisted of Roger and Isabelle Ramsdell, Cruise Captain; Bob and Judi Van Tassle, Executive Cruise Officer; Mike and Ginny Smith and Mark and Karen Stott were the Events Officers; while Chuck and

## THE YEAR IN REVIEW (Cont'd.)

Rosemarie Serra made up the Navigation Committee. Due to a change in employment, Tom and Joyce Gotard reluctantly withdrew from the Committee and were sorely missed.

Meetings followed in the homes of the various officers and a brochure was ready for the Spring Cruising Meeting.

Friday, July 6. The day for the cruise to start. Group Captain, Roger Ramsdell, and his able and beautiful wife, Isabelle, in their newly acquired sloop, Nancy II, cast off from their new berth. But, alas, the vessel was hard aground. Captain Gus Klesick seems always to be on hand and made all the correct moves to get the 31' yacht afloat! And so down the canal they steamed - amid cheers, flags and even a brass band. They were on their way.

The late afternoon trip was sailed by Nancy II in the company of John and Caroline Wragge in the Sea Jay.

Saturday, July 7. The next morning saw dozens of Cruising Club yachts at anchor in Great River. At 8 bells in the forenoon, the fleet up-anchored and proceeded east under main and jib. At 8 bells at the start of the first dog watch, much of the fleet had arrived at Cormorant Point in Shinnecock Bay. The Skippers' Meeting on the beach was called off because of the bugs and the Skippers grouped at the Nancy II for instructions and the most up-to-date cruise itinerary.

Sunday, July 8. Slack water at the Inlet was 0851 and the fleet steamed and sailed through the gentle swells. It was great! By 1730 the fleet was anchored in Great Salt Pond.

Monday, July 9. A lay-over day. Shore visitations, yacht to yacht visitations, dinghy sailing and a day for the "through the canal" group to catch up. There were 55 SBCC vessels in Great Salt Pond. All had the "white side up."

Tuesday, July 10. The fleet departed at 0700 out the narrow inlet to the North Reef Buoy, then 85 degrees. At 1345 sighted Buzzards Bay Tower. 1615 steamed into Cuttyhunk Harbor. The Cruising Guide says this harbor holds only 25 yachts. The SBCC had over 40 that day! It was wall-to-wall boats.

Wednesday, July 11. An overcast day. Fleet under way by 0800 and after a brisk sail up the coast arrived in beautiful, lovely, delightful Hadley Harbor which is believed by many to be the most super location on the coast. Mussels and clams were gathered and then steamed for Nummy-num time. MMM — good. Don Brown reported that Jennifer cut her foot and Dr. Paul Kramer administered stitches.

Thursday, July 12. Very foggy. At 0600 the fleet freed their anchors and proceeded through Wood's Hole at slack tide. (The slack period lasts about 5 minutes and then, wham, the current is racing from the other direction.) The fleet had the current in its favor all the way, as planned. Fog all the way was the rule of the day. The Nauti Nati stood by the We Dew It during Ed's trouble with his engine. Good shipmates and good friends are so valuable in cruising. The fog lifted as the fleet entered the Nantucket Breakwater. Executive Officer, Bob Van Tassel, using his ship-to-shore phone made all the arrangements for the fleet with the Nantucket Harbor Master. Of course, everybody had made reservations by mail. It was a hot day! Cocktails were served aboard the Nancy II at 1700 with Bob and Harriet Luce from Merrick who were vacationing on Nantucket. Another cocktail party aboard the

## THE YEAR IN REVIEW (Cont'd.)

Scotch and Water followed with Wally, Diana, Erik and friends.

Friday, July 13. Lay-over day on Nantucket. That night was Adults Night Out — the teenagers baby-sat while Mom and Pop stepped out. The able Event Officers had made reservations at the new, very elegant Harbor House. A midnight party ended up on the Nancy II. Ginny Smith and children came down with a bug and loyal Dr. Kramer came through again.

35 SBCC yachts with 78 adults, 31 teenagers and over 25 young children were at Nantucket. No tally taken of dogs, cats, birds and hamsters.

Saturday, July 14. Bastille Day in Paris, but departure day from Nantucket. The time was to be 0700. A few brave souls left in the dense fog. But most left at 1100. By the time Nancy II was 4 miles off shore, whap, and the dense fog rolled in again. In company with Sigrid, Magic, Jubiliation, Golden Days and Windquest, steered Northwest and then West missing horn blowing freighters, tankers, ferrys, fishing boats and unconcerned speeding power yachts — whew! The fog then lifted and there was the most beautiful sail to Cape Poge Point. By 1645 moored in Edgartown Harbor rafted with the Gypsy Rose.

Sunday, July 15. All is well. After taking on supplies some of the yachts started for Cape Poge Bay.

Monday, July 16. Saw the fleet slowly peel off and leave Cape Poge Bay at high tide. But, the fog was so thick that 1100 was the actual departure time instead of 0700 for one section of the fleet. This was a hot, powering type day. Steamed west in company with the Carolina. Due to fog, bucked strong currents in Vineyard Sound making for Tarpaulin Cove's alternate Lake Tashmoo. Entered Lake Tashmoo's long winding shallow entrance at 1445, a lovely spot, a combination of Hadley Harbor, Hamburg Cove and our own Great River. This was a paradise for the young folks. The Water Olympics were held as promised.

The Rowing Race was won by the following young salts:

First Place — Peter Davies and Ari Kramer

Second Place — Loren Stott and Jason Stott

Third Place — Lisa Van Tassel and Dean Patone

The Swimming Relay Race was won by these brave tars:

First Place - Ari Kramer and Peter Davies

Dean Patone and Jennifer Kramer

Second Place - Christy Smith and Bobby Van Tassel

Steven Classen and Jason Stott

Third Place - Lisa Van Tassel and Todd Patone

Russell Stott and Kurt Classon

This does not include the water battles with balloons, buckets, hoses and water pistols. This night the Nancy II anchored with the Myriah and Utopia.

Tuesday, July 17. Underway by 1000, another interesting trip in the fog along the Vineyard Shore. 1215 rafted in Menemsha Pond. Fog lifted and a strong north wind broke up the raft. Dr. Dwight Moody of the Bay Fox ran a Scavenger Hunt by dinghy for all the youngsters.

Wednesday, July 18. Anchors raised at 0700. After leaving Menemsha Harbor, bows were pointed west. 0815 off beautiful Gay Head, but not much seen in the

## THE YEAR IN REVIEW (Cont'd.)

haze and fog. A sight on Buzzards Bay Tower started our new course west. As Nancy II steamed along, the Chief Navigator on Gypsy Rose pointed ahead. Impossible to understand her. She then signaled to use the radio. "This is the Gypsy Rose reporting sharks off the bow." With that, the Coast Guard came in asking particulars. After hearing from the C.G. at Block, Menemsha and Brenton Cove, one asked the location of the sighting. Rosemarie came back promptly with the proper latitude and longitude. She then asked, "Do you have any instructions?" After a pause, the United States Coast Guard said, "Don't go swimming." By 1600, after refueling, taking on water and ice and degarbaging anchored in Great Salt Pond.

Thursday, July 19. Lay-over day at Block Island. "Teenagers Night Out" at Dead Eye Dick's.

Friday, July 20. Approached the end of the cruise. 0430 — upped anchor (golly it was early). At 0448, with running lights aglowing, the small ships headed west. More FOG — !! A.D.F. picked up Montauk before Nancy II made visual contact. 0755 the fleet passed Montauk and it was clear to the west. At 1400 entered Shinnecock. Instead of proceeding to Cormorant Point, Nancy II followed some of the yachts west. It was a long haul to Smith Point and for next year . . . Cormorant Point instead.

Saturday, July 21. Tried to sleep late, but rollers from the yachts passing through the Smith Point Bridge spoiled sleep and breakfast. So by 0900 Nancy II was on her way. Steamed westward and anchored in Great River at 1200. The Isdon arrived from Amityville at 1430 and brought Gus, Inge, Steven and Linda. It was HOT!

Sunday, July 22. Sailed home and at 1500 tied up at Jack Robertsons' in Amityville.

This cruise was dedicated to the wives, sweethearts, daughters and sons who are such a vital part of the little ships. Without them, none of this would have ever taken place. *They are just super!*

### BETWEEN THE FORKS CRUISE *The log of Cirrus, Herb Glover, Master*

Saturday, July 7, 1979.

The Cruise Chairman embarked from the Port of Babylon aboard his flagship "Cirrus" at 1315 hrs. EDT. After slatting about Babylon Cove for a frustrating half hour, he at last picked up a favorable breeze (SW of course) for Howell's Point and a short reach to Smith Point and the opening rendezvous. Unfortunately, with his characteristic caution, the chairman elected to drop sail at Howell's Point and power through the narrow and treacherous channel to Smith Point. As the seasoned skipper and his mate were congratulating themselves on successfully dropping sail without dropping each other overboard, something else went overboard, one 1975 Evinrude 9.9 hp. **Splash!** An omen perhaps? Read on!

Eventually Cirrus rafted up, under sail, with Nordlys, Impulse, and Windsong.

## THE YEAR IN REVIEW (Cont'd.)

Two Scotches later financial and towing arrangements had been made for the continuance of Cirrus's cruise.

Sunday, July 8.

Nordlys, Impulse, Windsong, and Cirrus left Smith Point, having noted the passing of Tangerine and KCB. Arrangements had been made for Nordlys to tow Cirrus through the Quogue Canal and the Ponquogue Bridge. At Remsenberg, on the first pick-up, the towline was inextricably jammed in Cirrus's swing keel. This event made rafting at Cormorant Point a rather interesting experience.

Monday, July 9.

Spent the day finding, procuring and installing a new engine and bracket on Cirrus and clearing the fouled line from her swing keel. During this exercise Impulse's engine informed the world that it no longer intended to deliver full power. However, much champagne was consumed celebrating Cirrus's return to full commission. Tangerine and KCB proceeded through the Canal as they were planning a short cruise and could afford to dawdle no longer.

Tuesday, July 10.

Nordlys, Impulse, Windsong and Cirrus proceeded to the gin pole for the traditional dismasting ceremony. During this fiasco the cruise chairman: 1) Dropped the forestay turnbuckle barrel overboard, 2) Dropped the mast on his First Mate, 3) Pulled the lanyard out of his dinghy engine, and 4) Towed Impulse (whose engine had given up the ghost) through the Canal, against the current. Upon arrival at the gin pole, Nordlys decided that she had been polite for too long. Her clutch jammed in forward speed and she wiped out the steps on the string dock. After securing for the night, four crews repaired to the Chart House for a delicious dinner watching powerboats doing the ceremonial whirlpool dance in the Canal.

Wednesday, July 11.

Harry and Judy Kenny and Carol Glover walked to town to procure a new gasoline breeze for Impulse, while Soren Smith and Herb Glover repaired the lanyard on Herb's dinghy engine and Art Champagne repaired the wiring to his masthead lights which were damaged in dismasting. The nearest engine was in Lindenhurst so the whole day was spent waiting for the truck to come. Meanwhile, Soren Smith and Herb Glover took Herb's dinghy across the Canal for ice. The morning's repair job had not been too successful and Soren and Herb soon found themselves in a dinghy overloaded with ice, drifting swiftly South with the locks wide open and ice blocking the use of the oars. Fancy sculling and a borrowed screwdriver soon saved the day and they returned to the fleet in time to celebrate the installation of Impulse's new engine.

Thursday, July 12.

1000 hrs.: Nordlys, Impulse, Windsong and Cirrus departed from Shinnecock Basin, destination: Greenport. Calm sea, no breeze, adverse tide, hot sun, Oy Vey! Passing Robins Island, Windsong's crew dropped anchor for a swim and lunch. Shortly afterward a gentle breeze blew up from the southwest and gave us a pleasant lift all the way to Greenport. The delightful sail around the north side of

## THE YEAR IN REVIEW (Cont'd.)

Shelter Island listening to the gentle murmur of the rip tides made us all forget the problems and difficulties of the last few days. We docked at Townsend Marina for dinner, a walking tour of Greenport, and a noisy night's sleep among the stinkpots.

Friday, July 13.

Around to Preston's Dock early in the A.M. with Nordlys, Impulse, and Cirrus for groceries, laundromat, and delicious browsing at Preston's. Eleanor Smith's local knowledge kept us from taking a bad beating alongside Preston's dock on the east side while several boats on the west side lost large chunks of teak rail when the harbor chopped up. Off for Coecles Harbor after lunch. Calm sea, no wind, hot sun! Met Valhalla and Sea Jay at Coecles.

Saturday, July 14.

Fog at dawn, weather forecasts for thunderstorms late afternoon. Departed Coecles 0900 hrs. as the fog lifted, to beat the thunderstorms to West Neck. Flukey winds and current at the ferry crossing gave the crews mild concern, but the ferries steered clear and no incidents occurred. Arrived at West Neck in time for a swim and a picnic lunch on Shell Beach and a roasting in the hot sun. Thunderstorms never arrived.

Sunday, July 15.

Laid over at West Neck while Smiths and Kennys visited friends ashore. Glovers didn't go, that #\$\$!\*D lanyard again, this time accompanied by a snarled mainspring. This time Herb figured out what he had been doing wrong, it proved to be no more trouble. Before the shore party returned Sea Jay sailed in and invited Carol and Herb over for a little mouthwash to clear the Evinrude Expletives from Herbs mouth. When the shore party returned Soren Smith and John Wragge ran a radio check on Nordlys' radio and we found out why we had been incommunicado for the whole cruise. The radio was not delivering full power. Our apologies to the other boats who tried to call us and thought they were being ignored.

Monday, July 16.

Departed West Neck for Shinnecock, flat and hot, but picked up a spanking breeze east of Robins Island. Nordlys dropped into Sebonic to drop her mast and powered through to Cormorant. Impulse and Cirrus docked in the Basin for a swim and a shower. The swim was fine, but the showers were inoperative. We settled for a shower/hose fight with Harry Kenny's hose on the driveway. All agreed we never felt so clean and refreshed, and we had a heck of a good time.

Tuesday, July 17.

Impulse and Cirrus dismasted and remasted without the use of the gin poles, a procedure to be highly recommended in the smaller boats with tabernacles. (It is best done by the "Buddy System".) They then joined Nordlys at Cormorant. The anchorage was very uncomfortable from the wakes of waterskiers. Herb Glover delivered a learned dissertation on the ancestry, morals and marital status of the skiers' parents. Apparently the lecture had the desired effect, as the skiers pulled alongside, expressed their apologies and resumed skiing, this time at a respectful distance. (Will miracles never cease?)

## THE YEAR IN REVIEW (Cont'd.)

Wednesday, July 18.

A pleasant sail back to Smith Point, cocktails and dinner on the final raft.

Thursday, July 19.

Raft broke up by 0900. Said 'Goodbye' to former acquaintances, now fast friends. Pledge, "Meet you here next year."

Nordlys, Impulse, and Cirrus will cruise again this year. Want to join us? We don't know where we're going or what mishaps and fun we'll have along the way. But if you can see a silver lining in a dark cloud and give and take help without self-consciousness, Welcome Aboard! See you in July.



## SBCB TROPHIES — 1979 SEASON

### PERPETUAL TROPHIES

*Commodore's Cup* — Blaze 14867

*Foulke Trophy* — Warlock 22101

*Sympatico Cup* — C-Bob 689

*Smith Trophy* — Magic 200

*Deale Trophy* — Sunshine 822

*Schnur Trophy* — Strawberry Fields 344

*Governor's Cup* — Sunshine 822

*Broadside Trophy* — Summerwind 66

*Cruising Club Crock* — Flighty Miss 145

### CLASS CHAMPIONSHIPS

*Spin* — Jacqueline II 818

*No-Spin* — Aeolus 297

### TUNE-UPS

*Spin* — Sunshine 822, Warlock 22101

*No-Spin* — Partenope 586, Blithe Spirit 437

### CREEPSTAKES

*Over 30'* — Resistance 176, Kandy Bar 2377  
Loon 983

*Under 30'* — Sunshine 822, Ailanthus 1121

### NOVICE SERIES

*No-Spin* — C-Bob 689, Partenope 586

### SPRING OCEAN

*Spin* — Merry Ann 220, Warlock 22101  
Liebchen 888

*No-Spin* — Harrier 260, Wild Rover 1125  
— C-Bob 689

### SMITH TROPHY

*Spin* — Chanson 4271, Loon 983  
Falcon 242

*No-Spin* — Magic 200  
Friendly Persuasion 742  
Ailanthus 1121

### SPRING FAMILY RACE

*No-Spin* — Loon 983, Jacqueline II 818  
Friendly Persuasion 742

### EASTERN TWILIGHT SPRING SERIES

*Spin* — Queen E 266

*No-Spin* — Magic 200, Blaze 14867  
Westwind 3663

### WESTERN TWILIGHT SPRING SERIES

*Spin* — Esoterica 622

*No-Spin* — Warlock 22101, Chanson 4271  
Ailanthus 1121

### SUMMER SERIES

*No-Spin* — Warlock 22101, Merry Ann 220  
Jacqueline II 818

### EASTERN TWILIGHT SUMMER SERIES

*Spin* — Queen E 266

*No-Spin* — Wild Rover 1125

Daydream Believer 10054

Integrity 215

### WESTERN TWILIGHT SUMMER SERIES

*No-Spin* — Warlock 22101, Blithe Spirit 437  
Chanson 4271

### COMMODORE'S CUP

*Spin* — Blaze 14867, 'Glas Menagerie 320

### LADIES' RACE

*No-Spin* — Kandy Bar 2377, Blithe Spirit 437  
Grey Ghost 227

### WEST ISLAND

*Spin* — Sunshine 822, Kismet 199  
'Glas Menagerie 320

*No-Spin* — Sunriser 346, Magic 200  
Honyak 625

### GREAT RIVER RACE WEEK

*No-Spin* — Merry Ann 220, Kandy Bar 2377  
Aeolus 297

### RACE WEEK WINDUP

*Spin* — Merry Ann 220, Sunriser 346

*No-Spin* — Chasseur 264, Magic 200  
Harrier 260

### EASTERN TWILIGHT MID-SUMMER SERIES

*Spin* — Queen E

*No-Spin* — Blaze 14867, Magic 200  
Summer Breeze 955

### WESTERN TWILIGHT MID-SUMMER SERIES

*Spin* — Warlock 22101

*No-Spin* — Ailanthus 1121, Mandalay 4744  
Warlock 22101

### FOULKE TROPHY

*Spin* — Warlock 22101, Sunshine 822  
Liebchen 888

*No-Spin* — Judi 356, Blithe Spirit 437

## SBCC TROPHIES — 1979 SEASON (Cont'd.)

### FALL OCEAN

*Spin* — Liebchen 888, Loon 983  
Warlock 22101  
*No-Spin* — Summerwind 4823  
Courageous 3813, Honyak 625

### EASTERN TWILIGHT FALL SERIES

*Spin* — Queen E 266  
*No-Spin* — Westwind 3663, Magic 200  
Daydream Believer 10054

### WESTERN TWILIGHT FALL SERIES

*No-Spin* — Sunshine 822, Ailanthus 1121  
Summerwind 4823

### FALL FAMILY RACE

*No-Spin* — Summerwind 4823, Harrier 260  
Esoterica 622

### CLASS RACE

*Corvette* — Queen E 266, Harrier 260  
*Morgan 38* — Summerwind 4823  
Tranquilizer 10207  
*Wanderer* — Resistance 176, Aeolus 297  
*Snapdragon* — Jolly Jack 468

### DISCOVERER'S RACE

*Spin* — Sunshine 822, Falcon 242  
Sunriser 346  
*No-Spin* — Wild Rover 1125, Aeolus 297  
Resistance 176

### LAST CHANCE

*Spin* — Falcon 242, Sunshine 822  
Loon 983  
*No-Spin* — Blaze 14867, Courageous 3813  
Harrier 260



## INVITATIONALS

### LIYC INVITATIONAL

*Spin* — Jacqueline II 818, Chanson 4271  
Falcon 242  
*No-Spin* — Friendly Persuasion 742  
Blithe Spirit 437, Liebchen 888

### BABYLON YC INVITATIONAL

*Spin* — 'Glas Menagerie 320, Sunriser 346  
Chanson 4271  
*No-Spin* — Blaze 14867, Nellie Bly 660  
Friendly Persuasion 742

### GSBYRA INVITATIONAL

*Spin* — Loon 983  
*No-Spin* — Magic 200, Dialectics 131

### SAYVILLE YC INVITATIONAL

*Spin* — Wild Rover 1125, Jeanie 102  
*No-Spin* — Harrier 260, Aeolus 297  
Westwind 3663

---

## THANK YOU

To Herb Klein, Evelyn's father, of Akron, Ohio, who took a picture one evening at Great River which became the cover of this yearbook.

To all the S.B.C.C. committee chairmen who supplied material for this publication.

To Tom Burke, a new member, who volunteered for the committee. His outstanding talent was greatly appreciated.

To all members who sent in pictures — sorry we could not print all we received. Your response to our need was "super."

To Evelyn who created the collage of events on the center page.

To Bay Shore Photo who were very helpful with our photographic prints.

To Steve DeLise for binding the book.

To Dolores Burke, Evelyn, Dick LaBella and Ted and Mary Schwarting for their proofreading efforts.

To Peter of Col-Pal Press who took my hand and led me through the maze of producing a yearbook.

To my son, Peter, who had to share his parents with the publication of a yearbook.

*Thank you all,*  
ANDY

## MEMBERS — South Bay Cruising Club — 1980

Members, Address	Phone No.	Sail No.
Ades, Paul & Jane, 110 The Crescent, Babylon	587-2253	777
Aiken, Donald W. & Peg, 7 Dundee Ave., Babylon	587-8411	2483
Alberi, James & Lynn, 21 Sunset Drive, Sayville	567-2714	238
Aries, Philip M., M.D., & Judith, 11 Compass Court, West Islip	661-8717	463
Attwood, Frederick L. & Elizabeth, 272 Ocean Avenue, Islip		107
Aubin, William M. & Joyce, 9 Pansmith Lane, W. Islip	669-1715	555
August, Barry F., D.D.S. & Iris, 270 E. Main Street, Bayshore	665-2028	1759
Avitable, Matthew & Eileen, 188 Auston Street, Lindenhurst	888-7826	
Baldwin, G. Gorton, Jr. & Sarah Lee, 188 West Islip Road, W. Islip	669-9247	4271
Baroni, Anthony & Kathy, 7 Prescott Avenue, Dix Hills	667-6758	2404
Barton, Mark Q. & Lois, 6 Academy La., Bellport	286-1832	133
Becker, Charles & Barbara, 12 West Lane, Bayshore	666-0194	521
Becker, Frederick A. & Pat, 64 Cormack Court, Babylon	669-3877	140
Becker, Joel E. & Dorothy, 139 Woodbury Rd., Hauppauge	234-4062	5763
Beinert, John & Helen, 32 Robert Street, Babylon	669-3936	53
Belfield, Robert E. & Joan, 104 Benson Avenue, Sayville	589-3635	708
Benedict, Ronald W. & Dotty, 901 Ocean Avenue, Bohemia	589-3751	701
Benith, Benedict R. & Isabel, 92 Prospect St., Babylon	587-1452	214
Berdolt, John P. & Margaret, 20 West Islip Road, West Islip	669-6617	199
Berhannan, Norman A. & Sarah, 3 Hamlin Avenue, Babylon	643-9592	119
Bernard, David & Vivian, 44 Highland Avenue, Patchogue		314
Bernichon, Clay A. & Marion, 98 Sequams Lane West, West Islip	661-0344	60
Bernstein, Bruce H. & Shelia, 41 West 96 St., Apt. 7B, N.Y.C.	*663-3321	787
Bertapelle, Arthur H. & Fran, 25 Leaside Drive, Great River	581-0260	279
Bickford, Newell H. & Janet, 39 Shore Lane, Bay Shore	665-7189	151
Blossom, Beth, 460 East 79 St., New York City	*249-8313	903
Boettger, Macklin, 123 Araca Road, Babylon		
Bogan, John H. & Louise, 245 Richmond Avenue, Amityville	842-1020	263
Bolger, Tom & Alice, 8 Dahill Road, Old Bethpage	249-7017	141
Boulukos, George N. & Kathy, 862 South Grove Street, Freeport	868-4092	2885
Boyd, Donald M. & Lou, 111 South Bayview Avenue, Amityville	264-3518	433
Boyd, Richard F. & Frances, 57 South Bay Avenue, Islip	581-0865	142
Bracco, William & Mildred, 28 Burnage Lane, Babylon	661-2530	Power
Brant, Austin E., Jr. & Jeanne, 78 Stratford Rd., W. Hempstead	481-5907	913
Braverman, Barry & Jane, 81 Stony Run, New Rochelle	*632-9290	253
Brayshaw, William S. & Ruth, 100 Peninsula Drive, Babylon	669-8759	12
Breul, Harry T. & Ruth, 111 Benson Avenue, Sayville	589-4657	
Brice, Steve & Cary, 144 Ocean Avenue, Amityville	264-0872	732
Brink, Robert E., 12 Meade Avenue, Babylon	669-7014	725
Brooks, Edward A., Jr., 131 W. Islip Rd. W. Islip	587-4333	260
Brown, Donald & Robin, 28 Gerard Street, Bellport	286-2272	2420
Brown, James D. & Barbara Ann, 186 Siegel Boulevard, Babylon		435
Brown, Robert Z. & Barbara, 334 Second Avenue, Bayport	472-3056	106
Browne, David G. & Dolores, 131 Sawyer Avenue, West Babylon	669-4382	418
Brownyard, Brendan J. & Bettina, 106 McConnell Ave., Bayport	472-9019	1125
Bundy, George P., 171 Anchorage Drive, West Islip	587-1133	12776
Burke, Thomas & Dolores, 105 Village Line Road, Babylon	587-0448	172

\*Outside 516 Telephone Area

## MEMBERS — South Bay Cruising Club — 1980 (Cont'd.)

Members, Address	Phone No.	Sail No.
Buxton, Irving & Joan, 8 Briarcliff Drive, Merrick	379-8532	301
Cahill, James F. & Mary, 75 Hampton Road, Garden City		204
Cameron, Donald J. & Kathleen, 306 Versal Pl., Sayville	567-1698	776
Canning, John, M.D. & Pearle, 13 Lacy Court, Blue Point	363-2950	190
Cantor, David & Bonnie, 121 Arrandale Ave., Kings Point	466-2875	774
Carl, Robert & Betty, 23 Hewlett Court, Babylon	661-7047	Power
Casey, Louis John & Gail, 118 Center Bay Drive, W. Islip	587-8388	
Ceilly, Ward V., M.D. & Linnea, 1 West Concourse, Brightwaters	666-7082	702
Cervený, William J. & June, 28 Benjamin St., Bay Shore	968-8783	247
Champagne, Arthur & Frances, 981 Manor Lane, Bay Shore	669-7536	358
Chasas, Joseph W. & Daris, 14 Sequams Lane West, W. Islip	669-2689	295
Ciocys, William F. & Peggíe, 3920 Ingraham St., San Diego, CA		14347
Classen, John R. & Lorraine, 1543 Pine Acres Boulevard, Bay Shore	666-8926	11588
Cohn, Bennett L. & Carol, 345 Woodland Drive, Brightwaters	666-8883	345
Coleman, Robert & Myrna, 970 Douglas Avenue, Wantagh	221-6129	689
Coller, Morris & Lisa, 190 East Second St., Mineola	741-4891	1124
Colleran, Harry J. & Marilyn, 31 Cutter Court, W. Islip	669-8689	145
Colombo, Peter & Lorraine, 44 North Pinelake Drive, Patchogue	475-2131	383
Cook, William H. & Mary Ann, 45 Elder Road, Islip	581-5657	220
Cook, William H., Jr. & Suzanne, 3 Moss Place, West Islip	661-6409	227
Cosgrove, William F. & Lee, 6 Greenhill Lane, Huntington	368-5003	254
Culviner, S. Prall & Frances, 770 Anderson Avenue, Cliffside Park, N.J.	*224-3256	1134
Cummins, William R. & Karen, 22 Myrtle Avenue, Keyport, N.J.	*264-5960	234
Cyr, Larry S. & Jo, 73 Rutherford Street, Berkley Heights, N.J.	*665-0586	773
Dahl, Kenneth & Shelia, 7 Scotch Pine Drive, Central Islip	234-3837	540
D'Aleo, John R. & Angela, 3 Susan Court, Plainview	822-4351	372
Dauch, Thomas E., Jr. & Jan, 45 Evelyn Road, West Islip	669-0950	292
Dauzickas, Paul, Jr. & Helen, 173 Melbury Rd., Babylon	587-3484	251
David, Robert T. & Marilyn, 6 Central Avenue, Amityville	691-0613	724
David, Thomas F. & Susan, 28 Namkee Road, Blue Point	363-2427	1403
Davies, Anton F. & Evelyn, 23 Cutter Ct., West Islip	587-0736	2712
Davies, Douglas E., 23 Cutter Court, West Islip	587-0736	532
Davison, Don W. & Marjorie, 16 Lewis Circle, Babylon		Power
Davison, Oliver & Virginia, 28 Annuskemunnica Rd., Babylon	422-0513	256
Davison, Russel & Judy, 252 Belvedere Drive, Oakdale	589-6388	1457
Davison, Russell & Jeanne, 5 Atlantic Ave., East Rockaway	593-8100	Power
Daytz, Richard M. & Sheila, 3 Davison Lane, West Islip	669-6993	10207
Degenhardt, Richard A. & Enid, 37 Eldridge St., Brentwood	273-2250	373
Delise, Stephen W. & Connie, 45 Davison Lane East, West Islip	587-7154	22101
deMurias, Ramon & Carlin, 74 Douglas Avenue, Babylon	669-0034	1258
Desimone, Vincent J. & Joan, 50 West Islip Rd., West Islip	587-8419	587
Deutsch, Lowell A. & Jeanette, 36 Bridle Way, Oakdale	589-3875	3663
Dew, Edward S., Jr. & Frances, 40 Terry Road, Patchogue	475-1714	1714
Dobbelaer, William M. & Rita, 24 Denise Lane, Hauppauge	234-9447	808
Driscoll, Stephen P. & Joan, 11 Mitchell Ave., Babylon	669-5649	3765
Dunleavy, William P. & Barbara, 243 Bay View Drive, Oakdale	567-0594	423
Dunlop, Robert F. & Peggy, 82 Sequams Lane West, West Islip	669-4807	176

\*Outside 516 Telephone Area

MEMBERS — South Bay Cruising Club — 1980 (Cont'd.)

Members, Address	Phone No.	Sail No.
Dwyer, William J. & Barby, 73 Elder Road, Islip	581-3606	2377
Eggerstedt, Fred C., 8 Davison Lane, West Islip	661-7045	277
Ellison, Robert A., 66 Allen Street, New York City	*925-0275	
Ernst, Robert S.C. & Dot, 321 Great River Road, Great River	277-4167	
Falik, Abe & Rena, 535 Fairway Drive, Woodmere	374-0673	1101
Farrell, Edward E. & Pete, 504 Avon Place, West Islip	669-4216	148
Feldman, Arthur R. & Marilyn, 960 Gardiner Drive, Bay Shore	666-5494	705
Feldman, Frank, 78-40 164th St., Flushing	*591-9582	355
Finta, Robert J. & Carol, 9 Baywood Lane, Bayport	472-0305	3131
Fischer, Edward & Janet, 123 Kenwood Drive, Bohemia	567-4873	166
Fishman, Manny & Yetta, 2890 Bayview Avenue, Wantagh	826-4251	309
Fitzpatrick, Frank X. & Lois, Box 155, Yaphank Avenue, Brookhaven	286-0462	718
Flegenheimer, B., 61 Braham Ave., Amityville	598-0028	147
Folks, Robert L. & Rose Mary, 11 Fairview West, Sayville	589-2840	528
Forman, Robert S., Jr. & Jacqueline, 33 Trask Lane, Babylon	587-3904	818
Forsyth, Eric B. & Edith, 2 Bond Lane, Brookhaven	286-9721	
Frederick, Cadman H. & Peep, 117 Handsome Avenue, Sayville	589-1218	368
French, Joe F. & Betty, 86 Wagstaff Lane, West Islip	587-2936	2700
Freudenthal, Hugo D., Dr. & Anita, Dr., 13 Iroquois Place, Massapequa	798-2545	544
Fring, Leo, Jr. & Lorraine, 3950 Taft Avenue, Seaford	785-6989	3924
Fuchs, Aaron, 43 South Penataquit Ave., Bay Shore		687
Gambino, James & Irene, 718 South 9th Street, Lindenhurst	226-3003	158
Ganzi, Victor F. & Patricia, 303 Captains Way, West Bay Shore	666-0387	20377
Gardner, Donald W. & Elizabeth, 14 North Brewster Lane, Bellport	286-1396	403
Gauch, Federick & June, 41 Connetquot Drive, Oakdale	589-1684	73
Geraghty, Joseph E., Jr. & Mary Lynne, 96 Stuart Ave., Amityville	691-0672	678
Gillespie, Frank & Barbara, 116 Montauk Hwy., Islip	581-7014	150
Gilmartin, John F. & Joyce Ann, 66 Sylvia Drive, West Islip	587-1312	334
Glinick, Robert H., M.D. & Norma, 811 Main Street, Islip	581-3991	108
Glover, Herbert B., Jr. & Carol, 28 Kingsland Place, Babylon	669-8115	98
Glynn, James J. & Suzy, 48 Foster Lane, Babylon	587-4868	2890
Goldsmith, Michael T., 51 Berger Avenue, Amityville	598-0167	230
Goldsmith, Morris & Judith, 25 Fairwater Avenue, Massapequa	541-1656	203
Golfman, Arnold W., M.D. & Joan C., 308 Woodland Drive, Brightwaters	665-5462	2521
Goodale, James O. & Ruth, 281 Bayview Avenue, Massapequa	541-2774	164
Goodman, Michael & Gail, 158 Sequams Lane West, West Islip	587-2550	395
Goodwin, Harold E. & Betty, 154 Greystone Road, Rockville Centre	764-7160	232
Goodwin, Roger F. & Genni, 2267 Arby Court, Bellmore	826-4626	1770
Gotard, Thomas & Joyce, 372 Hickory Street, Massapequa	541-2805	2180
Gottwald, Heinz W. & Josephine, 175 Peninsula Drive, Babylon	587-4722	113
Graham, Dick T. & Pat, 11 Haide Place, East Islip	581-5412	297
Grauer, William & Jeannette, 116 The Crescent, Babylon	587-8799	1121
Griffiths, Millard F. & Jessica, 55 Sequams Lane West, West Islip	669-0846	280
Groffman, Stanley & Leatrice, 89-45 201st St., Hollis	*479-7667	791
Grover, James R., Jr. & Mary, 185 Woodsome Road, Babylon	669-6891	813
Gschwind, Arthur V. & Inez, One Beech Road, Islip	277-1124	1020
Gunther, John & Barbara, 3 Cele Court, Sayville	567-1355	567

\*Outside 516 Telephone Area

# MEMBERS — South Bay Cruising Club — 1980 (Cont'd.)

Members, Address	Phone No.	Sail No.
Hack, Alfred G. & Jane, 31 Oak Neck Lane, West Islip	661-9359	365
Hack, Joseph, 260 East Shore Drive, Massapequa		16
Hamstra, J. Howard & Elizabeth, 1 Harbour Road, Babylon	669-1387	62
Hangarter, Theodore, M.D. & Judy, 300 Willets Lane, West Islip		102
Harris, Colin & Eunice, 121 Montgomery Avenue, North Babylon	587-3648	469
Hartzell, Claude R. & Doris, 87 Pittsburgh Ave., Massapequa	798-5097	322
Heacock, James A. & Eleanor, 59 Neil Drive Smithtown	724-0030	422
Heckel, Alfred H. & Stasia, 207 Captains Way, Bay Shore	666-9572	242
Heckel, Nancy, 108 Grassmere Ave., Oakdale		243
Heess, Fred A. & Mary, 9 Harbour Road, Babylon	661-1185	68
Heiduck, Hans W. & Kathryn, 145 Herzel Boulevard, North Lindenhurst	888-2171	1874
Heim, Paul K. & Mary, 3985 Hudson Ave., Seaford	785-6063	429
Heller, Mortimer B., 66 Tardy Lane, Wantagh	221-2439	282
Henkel, E. Eugene, 57 Park Avenue, Bay Shore	666-6166	299
Henry, Thomas E. & Barbara, 40 Trask Lane, Babylon	669-0719	22
Herman, Irving, Box 418, 98 Cutter Mill Rd., Great Neck	487-7503	466
Herman, Seymour J. & Bunny, 146 Island Parkway North, Island Park	431-2091	271
Herrforth, Carl & Charlotte, 10 Bunny Lane, Amityville	691-9412	353
Hettinger, Edwin & Florence, 1441 Chapin Ave., North Merrick	379-4991	460
Hollenbach, Craig & Gail, 4 Horizon Road, Fort Lee, N.J.	*224-9653	324
Holler, Howard I. & Joan, 8529-102nd Street, Richmond Hill	*846-5167	149
Hollis, John M. & Rose, 53 Briarcliff Drive, Merrick	623-4766	468
Hollis, Robert L. & Betty, 142 Tahlulah Lane, West Islip	669-6749	180
Holwell, F.S. & Joyce, 727 Purdy Lane, Amityville		23
Holzmacher, Robert G. & Ardith, 176 Peninsula Dr., Babylon	661-0294	122
Homestead, Robert T., 86 Lakeland Ave., Sayville	589-1335	13178
Horbert, Phillip R. & Denise, 10 Woodland Terrace, Merrick	379-8011	179
Horn, Frederick L. & Bobby, 461 Green Avenue, Sayville	589-2759	335
Horowitz, Richard & Clare, 4 Randy Lane, Plainview	938-5302	402
Horwitz, Bert S., M.D. & Dawn, 51 Woodland Dr., Brightwaters	665-8952	667
Howell, Rogers & Mary, 20 Dorset Lane, Babylon	669-3140	Power
Hyvonen, Ray & Jean, 471 East Wood Road, Rockville Centre	223-6980	377
Istel, John L. & Dorothy, 502 Rockrimmon Rd., Stamford, Conn.	*322-7799	1128
Iurillo, Dolf & Mary Lee, 100 Wampum Lane, West Islip	587-2878	276
Johansen, Harold A. & Mary Anna, 53 Tide Court, Oakdale	567-3442	4817
John, William, Jr. & Barbara, 17 Laurel Road, Oakdale	567-0525	449
Johnson, Edward S. & Betty, 256 Denton Avenue, Lynbrook	593-5767	4242
Johnston, William & Annette, 1084 Cassel Avenue, Bay Shore	665-9098	312
Jonas, Steven, M.D. & Linda, 107 Randall Ave., Port Jefferson	473-3010	131
Kachel, Walter & Diana, 6 Willis Ave., Amityville	691-6810	4495
Kaiser, Edmund A. & Grace, 160 Frankin Road, Oakdale	589-8474	219
Kallman, Bill & Dorothy, 862 Village Drive, Hauppauge	724-1490	444
Kelly, Patricia, 41 Willow Avenue, Islip	277-4683	333
Kenny, Harry W. & Judith, 17 Cambridge Drive, Babylon	669-2738	5021
Kennedy, Bruce & Melissa, 7 Bayside Ave., Amityville	598-0751	320
Kennelly, Edward J. & Carole, 165 Paulanna Avenue, Bayport	472-0923	165
Kerstin, Charles & Cleopha, 15 Skipper Dr., West Islip	422-0586	1109

\*Outside 516 Telephone Area

## MEMBERS — South Bay Cruising Club — 1980 (Cont'd.)

Members, Address	Phone No.	Sail No.
Ketcham, Donald F., 15 Morris Street, Amityville	264-5411	464
Ketcham, Paul T. & Muriel, 62 New Point Place, Amityville	264-1040	87
Kind, Volker & Andrea, 17 Blanchard Street, W. Babylon	661-4070	822
King, Dave & Marie, 399 Green Avenue, Sayville	567-0821	1530
Kissenberth, Erwin & Gertrude, 48 Stuart Street, Lynbrook	593-9438	648
Klarmann, Charles & Alice, 26 Bayview Lane, Amityville	691-1879	315
Kleisler, Wilfred B. & Kathleen, 22 Cockonoe Avenue, Babylon	587-2899	96
Klesick, August, 51 Barberry Court, Amityville	264-0846	Power
Knife, Dennis & Suzanne, 41-14 247 St., Douglaston	*224-7631	2101
Knott, Peter J. & Shirley Mae, 203 Melbury Road, Babylon	587-9098	347
Koller, A. Stephen & Margaret, 45 Argyle Road, W. Hempstead	481-2939	417
Kondor, Kenneth A. & Lynn, 102 Jackson Avenue, Rockville Centre	536-3213	99
Konz, William T. & Eunice, 596 Broadway, Lynbrook	887-1421	Power
Koster, John & Jo Anna, 4 Seaward Court, Stony Brook	751-8603	3454
Kraker, John F. & Anita, 75 Strong Avenue, Babylon	669-7581	90
Kramer, Paul, M.D. & Nikki, 3082 Riverside Drive, Wantagh	781-6108	719
Krug, Dennis & Adriana, 25 Harkin Lane, Hicksville	433-3452	452
Kumpf, Rudolph & Irene, 1325 N. Windsor Avenue, Bayshore		313
Kuzenko, Michael T. & Edith, 20 Secatogue Lane East, West Islip	661-5698	496
LaBella, Richard J. & Diane, 282 Timberpoint Road, East Islip	277-4725	14867
Labenow, Harvey & Gayle, 100 Peninsula Drive, Babylon	661-4183	Power
Lacy, Jim & Amy, 890 Grant Place, North Bellmore	826-5694	192
Lampe, Norman W. & Marilyn, 35 Dollard Drive, N. Babylon	667-4672	361
Lampe, Richard A. & Gerda, 104 Lighthouse Road, Babylon	669-3568	104
Langley, Rev. Harold, 1921 Old Mill Rd., North Merrick	379-1356	388
Larmor, J. Dever & Andrea, 79 Nassau Avenue, Islip	277-4397	
LaMorell, Frank O. & Marie, 1384 Pea Pond Road, North Bellmore	781-2194	781
Layden, John J. & Lynn, 127 Grand Blvd., Massapequa Park	799-4469	139
Layton, Jack E. & Kathi, 156 Cross Road, Oakdale	589-9206	625
Licari, Thomas B., Esq. & Joannie, 249 Connetquot Ave., East Islip	581-0203	33047
Linker, Philip B. & Ingke, 74 Oak Road, Bayport	472-3170	660
Locke, Clyde, R., M.D. & Adrienne, 38-04 28th Avenue, Long Island City	*278-3800	862
Lund, Rev. Richard W. & Shirley, 136 Linden Avenue, Rockville Centre	678-5396	530
Lundegard, Loyal G. & Doris, 7 S. Howell's Point Rd., Bellport	286-3343	804
Lupo, Carmine & Jane, 37 Whaler's Cove, Babylon	587-0045	830
Lynn, Robert W. & Marylou, 103 Atlantic Avenue, West Sayville	589-5943	720
MacGill, Bruce E. & Ethel, 39 Stuart Avenue, Amityville	598-1050	300
Madigan, Thomas B. & Elizabeth, 68 Shirley Court, Commack	543-4465	450
Magovern, John J. & Rose, 26 Chestnut Street, Garden City	741-2052	244
Marino, Ray & Sue, 6 Comet Road, Selden	698-5477	889
Maud, Dwight, M.D., 4 Buscher Court, Brookhaven	286-1111	447
Max, Boyd C. & Dottie, 11 Clearwater Avenue, Massapequa	541-4860	1
McCarthy, Rev. Thomas, 215 W. Santa Barbara Rd., Lindenhurst	226-5945	549
McClone, Thomas A., Jr. & Christine, 74 Sequams Lane West, W. Islip	669-5769	930
McClure, Dean & Joan, 30 Bethune Street, New York City	*989-1098	118
McCormick, Jack & Doris, 10 Maple Ave., Bellport	286-3362	401
McGinnis, Paul J. & Nancy, 327 Sunset Blvd., Massapequa	799-0295	381

\*Outside 516 Telephone Area

## MEMBERS — South Bay Cruising Club — 1980 (Cont'd.)

Members, Address	Phone No.	Sail No.
McInerney, John, P.O. Box P-510, Bay Shore	589-1454	281
McKeen, Joseph & Susan, 11 Cutter Court, West Islip	422-1729	739
McPherson, David L. & Gracie, 19 Montrose Avenue, Babylon	587-2085	116
McTeague, Hugh T. & Mable, 44 Hemlock Lane, Bay Shore	665-1894	2859
Menger, William M. & Beryl, 416 Fire Island Avenue, Babylon	587-4930	117
Merklin, Frank & Jacquelyn, 2502 Aron Drive West, Seaford	826-7448	226
Mielenhausen, Albert & Anne, 50 Suffolk Lane, East Islip	277-5777	622
Miller, Edward E. & Jacquelyn, 26 Little East Neck Road S., Babylon	661-4862	665
Mills, Donald L. & Gen, 2 Tile Lane, Hicksville	938-3156	10521
Moore, John R. & Midge, 25 Davison La. W., West Islip	669-9016	548
Moreland, Lee & Mary, 39 Hollister Lane, Islip	277-0079	319
Morris, John H. & Marian, 48 South Montgomery Avenue, Bay Shore	666-4023	2001
Muchmore, Wayne & Jane, 155 Sequams Lane East, W. Islip	587-9878	888
Mulle, Anthony H. & Antionette, 42 Thompson Ave., Babylon	669-7969	360
Murphy, Dennis R. & Charlene, 66 Bayview Ave., Bayport	472-2075	2263
Murray, Earl W., Jr. & Trudy, Box 205, Great River	277-3928	2484
Neale, Edmund J., Jr. & Janet, 42 Indianhead Drive, Sayville	589-3940	421
Nehring, Richard C. & Jinie, 163 Clocks Boulevard, Massapequa	795-4154	668
Nielsen, Warren J. & Jill, 25 Birch Road, East Islip	277-2152	169
Nolan, Gerrard J. Capt. & Joan, P.O. Box F, Callao, Virginia		2378
Nonnon, Eugene J. & Evelyn, 275 Longfellow Ave., N. Babylon	661-6382	294
Norwalk, Harry R. & Susan, 2 Saxon Court, Glen Cove	735-1097	20261
Novak, Robert & Cathy, 118 South Bay Avenue, Brightwaters	666-4087	20233
O'Connell, Thomas F. & Susan, 30 Frederick Avenue, Babylon	587-7375	1195
Olsen, Robert W. & Carole, 631 Peter Paul Dr. W. Islip	669-8371	669
Orr, Louis H., Jr. & Libby, 157 Sequams Lane, West Islip	669-2841	983
Pagliaro, John J. & Gerry, 15 Jennings Court, Woodbury	921-7842	425
Pallotta, John A. & Sigrid, 28 Garner Lane, Bay Shore	665-8892	918
Palmaro, John, 275 South Broadway, Lindenhurst	226-3983	370
Palmer, John & Grace, 165 Lake Dr. North, W. Islip	669-5552	304
Parillo, Louis F. & Marisa, 123 Harbour St., West Islip	586-8063	586
Parker, Charles W. & Linda M., 105 Cleveland St., Bay Shore	968-8632	419
Parker, Rev. Richard & Grace, 639 West 173 St., New York, N.Y.	*927-4891	77
Pasch, Robert & Fran, 42 Dundee Avenue, Babylon	669-7882	46
Patin, Paul J. & Priscilla, 40 Regina Dr., Sayville	589-8330	4882
Pawloski, Raymond & Kathleen, 33 Ewell Street, Babylon	587-3769	1276
Pearson, Alex & Ann, 6 Flower Hill Lane, Bay Shore	665-0908	78
Penny, Stanley G. & Catherine, 155 South Ocean Avenue, Bayport	472-0559	405
Perry, Jack R. & Joan, 78 Gillette Avenue, Sayville	589-7199	215
Peterson, Ronald B. & Jean, 344 Seville Blvd., Sayville	567-9436	21674
Petroske, Edward & Joan, 34 Dartmouth Drive, Deer Park	586-9509	1776
Pfrunder, Ernst & Barbara, 138 Ocean Ave., Amityville	264-6181	264
Piechnik, Robert & Carol, 31 Richmar Drive, Sayville	589-0237	955
Pless, John A. & Helene, St. Mark's Lane, Islip	277-3216	110
Polk, Irving & Natalie, 236 Jayne Avenue, Patchogue	475-8971	184
Pollen, Larry, 131 Wavecrest Drive, Mastic Beach	281-4717	3419
Portnoy, Melvin, Dr. & Joan, 1 Brandywine Drive, Setauket	751-8760	416

\*Outside 516 Telephone Area

MEMBERS — South Bay Cruising Club — 1980 (Cont'd.)

Members, Address	Phone No.	Sail No.
Post, Henry A.V. & Marguerite, 44 Davison Lane East, West Islip	669-5655	86
Poulos, Thomas J. & Bernadette, 171 Driftwood Dr., West Islip	661-4143	146
Pressler, Robert B., 739 Newbridge Road, North Bellmore	432-7698	350
Radeka, Veljko & Lela, 29 Academy Lane, Bellport	286-0854	571
Ramsdell, Roger & Isabelle, 28 Walnut Avenue, Rockville Centre	766-2294	24
Raskin, Edward S. & Rochelle, 4 Norgate Drive, Sayville	567-2025	710
Reardon, Eugene M., 31 West Lane, Bay Shore	665-1277	5174
Reed, Richard L. & Claire, 6 Deering Wood Lane, Babylon	661-4899	802
Regan, John J. & Peggy, 3 Chase Lane, Sayville	567-1549	155
Reichel, David K. & Judie, 18 Radcliff La., S. Farmingdale	249-4638	384
Reilly, James C. & Ethel, 92 Johnson Avenue, Sayville	589-2358	266
Reimer, Richard R., 103 Farmingdale Rd., W. Babylon	422-1342	515
Rein, Mark & Frances, 378 West End Avenue, New York City		211
Reinhard, Albert & Sue, 2 Delta Rd., Massapequa	799-3066	901
Reiser, Paul H. & Marie, 77 Stillwater Avenue, Massapequa	798-9564	105
Rieger, John R. & Dore, 138 Anchorage Drive, West Islip	587-6042	2823
Rising, Albert E., Jr. & Niel, 103 West Concourse, Brightwaters	665-6712	182
Robb, Jack & Virginia, 522 DeWitt Avenue, Babylon	586-1015	2191
Robertson, Norman & Doris, 67 Bayway Ave., Bay Shore	666-4429	288
Rosen, Jules & Rita, 456 Lombardy Blvd., Brightwaters	665-3771	666
Rosenberg, Bud & Harriet, 377 6th Ave. North, Tierra Verde, FL	*867-2772	156
Rosensweig, Paul S. & Sara, 11 Cow Path, Brookville	626-3299	
Ross, John S. & Dorothy, 9 Hayes Rd., Amityville	842-2419	Power
Rottkamp, Bill & Ellen, 768 Silver Lake Place, Baldwin	623-6229	1699
Rubin, David S. J. & Florence, 7 Damin Circle, St. James	724-3875	21036
Russo, Benjamin D. & Charron J., 73 Benson Ave., Sayville	589-6196	589
Ryan, Jack R. & Peggy, 2 High Noon Road, Weston, Connecticut	*226-9757	111
Sabbeth, Edgar, 27 East Harrison Ave., Babylon	661-3765	344
Saccio, Philip W. & Donna, 36 Perriwinkle Dr., Bohemia	567-5678	
Saganic, Romeo & Rosemary, 191 Wampum Lane, West Islip	587-3564	138
Sagarese, Charles & Concetta, 1 Mast Lane, West Islip	587-8675	382
Sagarese, Frank M. & Rosemarie, 50 Cedar Point Dr., West Islip	669-9163	1279
Sailor, Vance L. & Marguerite, 100 Durkee Lane, East Patchogue	475-9294	153
Savoca, Paul & Gina, 66 The Helm, East Islip	277-0805	121
Saxe, John R. & Kathleen, 16 Elder Road, Islip	581-1291	4744
Schaefer, Laurence A. & Doris, 120 Wampum La., W. Islip	669-0374	308
Schaefer, Robert & Nonette, 172 West Islip Road, W. Islip	669-6751	64
Schafer, Andrew P. & Gisela, 3167 Oceanside Road, Oceanside	536-0695	218
Schapiro, Robert D. & Sue, 11 Coppertree Lane, Babylon	661-3948	712
Scharr, Ralph & Harriet, 3 Ridgewood Lane, Ft. Salonga	757-3253	237
Schecker, Edward J. & Beatrice, 606 Higbie Lane, West Islip	587-4645	371
Schmahl, Wolfgang G. & Hertha, 21 Harbor Court, Copiague	842-9354	20126
Schnapp, Arthur C. & Blanche, 807 Maine Ave., Bay Shore	273-2125	273
Schneider, Joseph B. & Lorraine, 3516 Surele Road, Wantagh	221-5891	558
Schnell, James & Laura, 38 Colton Ave., Sayville	589-7619	619
Schultz, Robert D. & Vi, 1 Eastgate Drive, Sayville	589-4175	457
Schultz, Russell H. & Doris, 249 Shadybrook La., West Islip	669-7682	337

\*Outside 516 Telephone Area

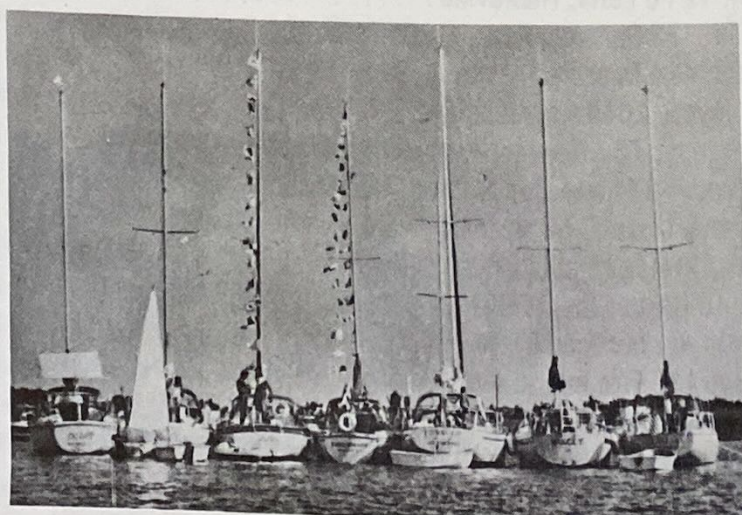
## MEMBERS — South Bay Cruising Club — 1980 (Cont'd.)

Members, Address	Phone No.	Sail No.
Schuster, Herman & Jean, 185 Secatogue Lane West, West Islip	422-0134	136
Schwarting, Theodore & Mary, 108 Argyle Dr., East Islip	277-2013	742
Schwartz, Julian & Marion, 108 The Helm, East Islip	665-7071	4358
Schwartz, Robert, Dr. & Diane, 160 West Bayberry Rd., Islip	277-0330	917
Schultz, Robert & Vi, 1 Eastgate Drive, Sayville	589-4175	457
Seidenberg, Everett & Teddy, 61 South Carll Avenue, Babylon	669-4930	Power
Serra, Chuck & Rose Marie, 20 Frank Avenue, Farmingdale	249-8437	420
Shadoff, Sander & Elaine, 51 Camp Road, Massapequa	799-3094	1762
Shappell, Stephen, Dr. & Carmen, 375 East Main Street, Bay Shore	360-3632	363
Shea, John & Karla, 107-2B Richmond Blvd., Ronkonkoma	981-6544	624
Sheppard, Robert J. & Carole, 167 Paulanna Avenue, Bayport	472-0099	200
Sherwood, Richard B. & Dianne, 99 Ballpark Lane, Hicksville	681-7595	443
Silbert, Mitchell, Dr. & Shirley, 141 Anchor La., W. Bay Shore	666-2055	2020
Smith, Hale & Claire, 6 Alden Road, East Rockaway	593-4427	346
Smith, Merrit & Janet, 169 Sequams Lane Center, West Islip	661-2786	
Smith, Michael G. & Virginia, 446 Heathcote Rd., Lindenhurst	957-8222	159
Smith, Robert O. & Mary, 119 Lagoon Boulevard, Massapequa	798-3395	2156
Smith, Soren T. & Eleanor, 848 East Bay Drive, West Islip	669-3143	93
Snyder, Robert & Laura, 190 West Islip Road, West Islip	587-7740	161
Spatenga, Hugo & Patricia, 50 Sunset Drive, Sayville	589-6863	1184
Spieß, Newton E., & Dess, 46 Fernwood Ave., Oakdale	589-4491	109
Spivack, Boris M. & Lois, 84 Handsome Avenue, Sayville	589-3629	442
Stammnitz, Jens & Jutta, 64 Griffing Ave., Amityville	691-0504	796
Stearns, Clyde E. & Milly, 25 Durkee Lane, East Patchogue	475-0841	114
Steinert, Joachim & Renate, 19 Flicker Drive, Middle Island	924-5181	482
Steinhard, Walter & Evelyn, 155 Freemont Street, Peekskill, N.Y.		
Stephani, Dmitri & Helen, 174 Sears Road, West Islip	669-9202	430
Stephens, Richard & Barbara, 80 Vanderbilt Boulevard, Oakdale	589-5826	318
Stott, Mark L. & Karen Lee, 1450 5th St., West Babylon	587-0152	535
Stoye, Carl & Grace, 65 Paulanna Ave., Bayport	472-1299	Power
Stuhler, Robert E. & June, 22 Brightwater Place, Massapequa	799-4457	Power
Sweeney, Brian, 4 Larkin Street, South Huntington	421-1083	10054
Symons, William & Ricki, 312 South Clocks Boulevard, Amityville	264-6330	174
Tarantino, John & Helen, 179 Kingston Boulevard, Island Park	432-8933	112
Tauby, William & Lynn, 12 Po Lane, Hicksville	935-1672	427
Taussig, Fred F. & Julie, 133 Palisade Ave., Englewood, N.J.	*568-2080	2790
Teta, Michael & Virginia, 414 Deer Park Avenue, Babylon	587-3450	303
Thayer, M. Whiting & Joyce, 2045 Keystone Blvd., Miami, FL	*891-5213	45
Thomas, William E. & Nancy, 75 Stillwater Avenue, Massapequa	798-2349	Power
Thompson, Ralph W. & Joy, 37 Leewater Avenue, Massapequa	799-7672	799
Thomson, Robert Cooper & Marcia, 68 Norman Avenue, Amityville	264-0753	154
Tilden, Henry G. & Ruth, 114 Peninsula Drive, Babylon		19
Titterington, J. & Ann, 40 Harbor Beach Road, Miller Place	473-8677	94
Tonkiss, Ace & Maria, 94 Anchorage Dr., W. Islip	587-9397	631
Torrey, William H. & Joy, 112 Fire Island Ave., Babylon	669-4339	
Trihy, James R., 190 Ketcham Ave., Amityville	691-5575	339
Turner, Eugene E. & Margaret, 84 South Carll Ave., Babylon	669-5271	270

\*Outside 516 Telephone Area

## MEMBERS — South Bay Cruising Club — 1980 (Cont'd.)

Members, Address	Phone No.	Sail No.
Turner, Peter G., & Judy, 18 Bay 2nd St., Islip	277-0959	890
Underhill, Thomas & Katie, 14 White Birch Drive, Babylon		Power
Vaclavik, Allan & Mary Ann, 9 Epson Course, Brookhaven	286-3654	221
Van Nostrand, David, 156 Oak Street, Amityville	691-6112	2808
Van Nostrand, Roy & Peggy, 66 E. Lake Drive, Amityville	691-6151	120
Van Tassel, Robert & Judi, 25 Kingsland Place, Babylon	669-7344	356
Van Vliet, Jetse, M.D. & Johanna, 6 Tuthill St., Bellport	286-0832	404
Wainwright, Philip B. & Lydia, 6 Braham Avenue, Amityville	264-2571	2627
Walsh, George F. & Joyce, 35 Tide Court, Oakdale	567-1288	123
Wangner, Ronald & Linda, 29 Euston Rd., Garden City	483-6816	483
Warner, William H. III, & Kathy, 55 Concourse West, Brightwaters	666-7812	1453
Weinstein, Robert, 17 Overton Place, Babylon	669-6069	1181
Wendt, Robert L. & Ruth, Hillcrest Lane, Woodbury	692-6998	170
Werner, Loraine F., 4 Dixie Lane, East Islip	581-0526	157
Westhoff, Kelly, 454 Sayville Blvd., Sayville	567-5207	10551
Wieda, Alfred & Florence, 186 Clocks Boulevard, Massapequa	795-5246	331
Wiedersum, Frederic & Fairfax, 214 Captains Way, Bay Shore	665-8982	3813
Wiehl, Jurgen & Marlene, 27 Cutter Ct., W. Islip	587-7342	413
Wills, Richard & Anna Mae, 24 Smith Street, Babylon		Power
Wirth, John & Doris, 61 Broadway Rm. 3012, New York	*344-1500	195
Wissman, Robert & Charlotte, 104 Concourse East, Brightwaters	666-8340	66
Wittman, Ralph & Lynn, 53 Grand Central Ave., Amityville	264-4043	128
Wolf, Joseph & Elaine, 1327 Surrey Lane, Rockville Centre	764-7049	375
Wood, David, Jr. & Pat, 26 Secatogue Lane East, West Islip	661-4400	89
Woodhull, Richard M. & Virginia, 241 Durkee Lane, East Patchogue	475-3930	241
Woodward, John & Nona, 4098 Beach Dr., South East, St. Petersburg, FL		40
Wrage, George E. & Dorothy, 29 Braham Avenue, Amityville	691-8506	212
Wragge, John B. & Caroline, 27 Bayview Lane, Amityville	264-0111	35
Yaxis, Alexander G. & Vi, 29 Hamilton Street, Amityville	264-2153	125
Zangle, Francis W. & Annette, 14 Deeringwood Lane, Babylon	587-3789	2701
Zimmer, Donald J. & Laurette, 3470 Homestead Avenue, Wantagh	785-5246	222
Zimmerman, Frederick F. & Barbara, 33 Eaton Lane, West Islip	669-4547	10



## SOUTH BAY CRUISING CLUB FLEET — SAILING AUXILIARIES

<u>No.</u>	<u>Yacht</u>	<u>Owner</u>	<u>Rig</u>	<u>LOA</u>	<u>Draft</u>	<u>Model</u>
1	Climax	B. Max	Sloop	38	3.8	Morgan
10	Teezim Too	F. Zimmerman	Ketch	32	3.5	Dickerson
12	Filibuster	W. Brayshaw	Sloop	30	3.5	Morgan
16	Periwinkle	J. Hack	Sloop	36		P-36
19	Whistler	H. Tilden	Sloop	36	4.2	Whistler
22	Ishtar	T. Henry	Ketch	32	3.6	Grampian
23	Mañana II	F. Holwell	Sloop	22		Delorie
24	Black Petrel	R. Ramsdell	Cutter	31	3.4	Irwin
35	Sea Jay	J. Wragge	Sloop	27	3.4	Tartan
40	Golden Days	J. Woodward	Cutter	33	3.11	CSY 33
45	Skylark	W. Thayer	Ketch	40	3.0	Motor Sailor
46	Sparkling Waters	R. Pasch	Sloop	30	3.5	Morgan
53	Lady Lou V	J. Beinert	Cat	22	2.5	Sweisguth
60	Ariel	C. Bernichon	Sloop	42	2.6	Catamaran
62	Slim	H. Hamstra	Sloop	27	3.4	Tartan
64	Decatur	R. Schafer	Sloop	30	3.5	Morgan
66	Force 10	R. Wissman	Sloop	38	3.8	Morgan
68	Memory	F. Heess	Sloop	33	3.7	Swiftsure
73	Antigua	F. Gauch	Ketch	33	3.0	H.G. Smith
77	Charisma	R. Parker	Sloop	32	3.6	Bristol
78	Buccaneer	A. Pearson	Sloop	35	4.8	Morgan
86	Yankee Doodle	H. Post	Sloop	25	2.6	Bayfield
87	Betty	P. Ketcham	Sloop	18		P. Ketcham
89	Patty Wagon	D. Wood	Sloop	31	3.3	Irwin
90	Doppalong	J. Kraker	Sloop	28	2.7	Menemsha 24
93	Nordlys	S.T. Smith	Sloop	25	2.0	Catalina
94	Twilight	J. Titterington	Ketch	44		Cherubini
96	Valhalla	W. Kleisler	Sloop	29	4.0	Valkyrie
98	Cirrus	H. Glover	Sloop	22	2.0	Prestige
99	Lady Lynn	K. Kondor	Sloop	30	3.6	Wanderer
102	Jeanie	T. Hangarter	Sloop	27	3.3	Hunter
104	Blue Norther	R. Lampe	Yawl	35	3.7	Bristol
105	Glass Slipper	P. Reiser	Sloop	24	2.3	Tylercraft
106	Charron's Ferry	R.Z. Brown	Ketch	38		Colvin
107	Horizon	F. Atwood	Ketch	45		Motor Sailor
108	Reliance	R. Glinick	Ketch	37	3.9	Irwin
109	Diana II	N. Spiess	Sloop	36	4.1	Alden Zephyr
110	Hollandia	J.A. Pless	Yawl	32	3.9	Irwin
111	Polly Bee	J. Ryan	Ketch	34	2.7	Simplissima
112	Ebb Tide	J. Tarantino	Sloop	22	2.0	Herman
113	Ruth II	H. Gottwald	Ketch	35	3.0	Dickerson
114	Respite	C. Stearns	Ketch	37	4.6	Pearson 365
116	Staryker	D. McPherson	Sloop	26	2.4	Polaris
117	Oysterman	W. Menger	Sloop	23	1.8	Oysterman 23
118	Magic	D. McClure	Schooner	36		Chapelle-Colvin
119	Sara Jane	N. Berhannan	Cat	18	1.5	Marshall
120	Lorna Doone	R. VanNostrand	Sloop	33	3.0	S & S
121	Anache III	P. Savoca	Sloop	37	4.0	Irwin

**SOUTH BAY CRUISING CLUB FLEET —  
SAILING AUXILIARIES (Cont'd.)**

<u>No.</u>	<u>Yacht</u>	<u>Owner</u>	<u>Rig</u>	<u>LOA</u>	<u>Draft</u>	<u>Model</u>
122	Wanderlust	R. Holzmacher	Schooner	32	2.8	Herman
123	Endless Summer	G. Walsh	Ketch	45	5.2	Hardin 45
125	Vi	A. Yaxis	Ketch	28	3.5	H-28
128	Lynn W.	R. Wittman	Sloop	31	1.8	Oysterman
131	Dialectics	S. Jonas	Sloop	30	3.6	O'Day
133	Chantey	M. Barton	Yawl	33	3.0	Tavana
136	H.M.S. Bel Ami	H. Schuster	Sloop	28	3.0	Morgan
138	Windrose	R. Saganic	Sloop	25	2.9	Bayfield
139	Lady Lynn II	J. Layden	Sloop	25	2.6	Buccaneer
140	Artifact	F. Becker	Cat	18	1.5	Unknown (1906)
141	Marshmallow World	T. Bolger	Ketch	30	4.2	Seawind
142	Nor'Easter	R. Boyd	Yawl	34		Charles Mower
145	Flighty Miss	H. Colleran	Sloop	39	4.8	Pearson
146	First Edition	T. Poulos	Cutter	23	1.6	Venture
147	Illusion	B. Flegenheimer	Sloop	23	2.3	Seafarer
148	Valkyrie	E. Farrell	Sloop	30	4.0	Valkyrie
149	Misty II	H. Holler	Ketch	36.5	4.5	Pearson
150	Sly Fox	F. Gillespie	Sloop	35.5	3.9	Bristol
151	Abnaki	N. Bickford	Sloop	29	3.4	Bristol
153	Jan Maat	V. Sailor	Sloop	30	5.0	Dutch Maid
154	Sea Hawk	R. Thomson	Sloop	35	3.8	Pearson
155	Pony Tail	J. Regan	Sloop	24	2.0	Venture
156	Orca	B. Rosenberg	Sloop	36	4.1	Alden Zephyr
157	Charisma	L. Werner	Sloop	28	3.0	Irwin
158	Whileaway	J. Gambino	Ketch	40	4.6	Cheoy Lee
159	Sundowner	M. Smith	Sloop	27	4.0	Catalina
161	Resolute	R. Snyder	Sloop	30	3.6	Wanderer
164	Tammy Norie	J. Goodale	Sloop	23	2.3	Seafarer
165	Mallard II	E. Kennelly	Sloop	32		Fales
166	Xanadu	E. Fischer	Sloop	27	3.4	Watkins
169	(No Name)	W. Nielsen	Sloop	25	4.0	Seidelmann
170	Awiki II	R. Wendt	Sloop	28	2.9	Soverel
172	Shamrock	T. Burke	Sloop	26	3.0	Westerly
174	Deliana	W. Symons	Sloop	30	1.5	Iroquois Mk II
176	Resistance	R. Dunlop	Sloop	30	3.6	Wanderer
179	Privateer	P. Horbert	Sloop	27	3.1	Bristol
180	B & B	R. Hollis	Sloop	26	3.0	Snapdragon
182	Vela II	A. Rising	Sloop	30	3.6	Wanderer
184	Sea Chantey	I. Polk	Sloop	28	2.9	Soverel
190	Salty C's	J. Canning	Yawl	35	3.8	Pearson
192	Nova	J. Lacy	Sloop	26	2.6	Snapdragon
195	(No Name)	J.A. Wirth	Sloop	26	2.4	Polaris
199	Kismet	J. Berdolt	Sloop	38	3.8	Morgan
200	Magic	R. Sheppard	Sloop	33	4.0	Pearson
203	Barcarolle	M. Goldsmith	Sloop	41	4.2	Morgan
204	White Cloud	J. Cahill	Sloop	28	3.0	Morgan
211	Bones Apart II	M. Rein	Sloop	28	3.0	Morgan
212	Puffin	G. Wrage	Sloop	25	2.9	Irwin

**SOUTH BAY CRUISING CLUB FLEET —  
SAILING AUXILIARIES (Cont'd.)**

<u>No.</u>	<u>Yacht</u>	<u>Owner</u>	<u>Rig</u>	<u>LOA</u>	<u>Draft</u>	<u>Model</u>
214	Isabel	B. Benith	Ketch	26.5	3.6	Atkin
215	Integrity	J. Perry	Sloop	33	3.3	Swiftsure
218	Gisela R.	A.P. Schafer	Sloop	25	4.3	Friendship Sloop
219	Red Baron	E. Kaiser	Sloop	30	4.0	Easterly
220	Merry Ann	W. Cook	Sloop	35.5	3.10	Bristol
221	Blue Moon	A. Vaclavik	Sloop	25	3.0	O'Day
222	Utopia	D. Zimmer	Sloop	34	3.3	Morgan
226	Jackie M.	F. Merklin	Sloop	25	2.3	O'Day
227	Gray Ghost	W. Cook, Jr.	Sloop	24	4.0	C & C
230	ULLr	M. Goldsmith	Ketch	32.5	4.0	Irwin
232	Good Wind	H. Goodwin	Sloop	31	3.1	Columbia
234	Reverie	W. Cummins	Yawl	38	4.0	Alden Challenger
237	Rakama II	R. Scharr	Cutter	23	1.6	Venture
238	Butterfly	J. Alberi	Sloop	24	2.8	Dolphin
241	Windrifter	R. Woodhull	Sloop	35	3.9	Pearson
242	Falcon	A. Heckel	Sloop	35.5	3.9	Bristol
243	Happiness Is	N. Heckel	Sloop	22	2.3	Sailmaster
244	Miramar	J. Magovern	Sloop	27	3.4	Tartan
247	Windhover	W. Cervený	Ketch	28	3.0	Colvin
251	Aeolus III	P. Dauzickas	Yawl	32	3.6	Bristol
253	Yellow Brick Road	B. Braverman	Sloop	30	5.6	Seidelman
254	Lady Lee	W. Cosgrove	Sloop	30	3.3	Grampian
256	Hephzibah	O. Davidson	Schooner	32	2.8	Herman Lazy Jack
260	Harrier	E.A. Brooks	Sloop	31	3.5	Corvette
263	Rehbock	J.H. Bogan	Sloop	25	2.3	O'Day
264	Chasseur	E. Pfrunder	Sloop	27	3.3	Hunter
265	Mariah	D. Reichel	Sloop	28	3.4	Bristol
266	Queen E	J.C. Reilly	Sloop	31	3.3	Corvette
270	Independence	E. Turner	Sloop	27	3.4	Tartan
271	Panacea	S. Herman	Sloop	28	3.0	Soverel
273	Blanche L III	A. Schnapp	Sloop	30	4.0	Hunter
276	Venus	D. Iurillo	Sloop	33	3.6	Swiftsure
277	Sumaka IV	F. Eggerstedt	Sloop	27	3.4	Tartan
279	Windsong	A. Bertapelle	Sloop	30	3.5	Creekmore
280	Gem	M. Griffiths	Ketch	26	2.0	Brby
281	Ellen	J. McInerney	Sloop	31	3.3	Corvette
282	Batyam	M. Heller	Sloop	26	2.8	Sailstar Courier
288	Quintessence	N. Robertson	Sloop	30	4.0	Sabre
292	Feather	T.E. Dauch, Jr.	Sloop	24	3.4	Corsair
294	Starduster	E. Nonnon	Sloop	27	4.0	O'Day
295	Psyche IV	J. Chasas	Sloop	38	3.8	Morgan
297	Aeolus	R. Graham	Sloop	30	3.6	Wanderer
299	Sea Fever	E. Henkel	Ketch	38	4.0	West Indies
300	Merri Mac	B. MacGill	Sloop	24	3.4	Corsair
301	Good Tern	I. Buxton	Sloop	28	3.6	Morgan O.I.
303	Cayenne	W.M. Teta	Sloop	27	3.0	Catalina
304	Salteen	J. Palmer	Ketch	32	4.0	Triangle
308	(No Name)	L. Schaefer	Sloop	27	3.3	Hunter

**SOUTH BAY CRUISING CLUB FLEET —  
SAILING AUXILIARIES (Cont'd.)**

<u>No.</u>	<u>Yacht</u>	<u>Owner</u>	<u>Rig</u>	<u>LOA</u>	<u>Draft</u>	<u>Model</u>
309	Pooka	M. Fishman	Sloop	31	3.3	C & C
312	Apocalypse	W. Johnston	Sloop	27	3.4	Watkins
313	Wanderlust III	R. Kumpf	Sloop	26		Cross Trima.
314	Sagwa	D. Bernard	Sloop	31	3.3	Corvette
315	Marigold	C. Klarmann	Sloop	27	2.4	American
318	Windquest	R. Stephens	Sloop	34	3.3	Morgan
319	Mary Lee	L. Moreland	Sloop	34	3.3	Morgan
320	'Glas Menagerie	B. Kennedy	Sloop	31	3.3	Corvette
322	At Last	C. Hartzell	Sloop	23	2.3	O'Day
324	Misty	C. Hollenbach	Sloop	25	3.5	Bristol
331	Sea Sprite	A. Wieda	Sloop	32		Motor Sailor
333	Banshee	P. Kelly	Sloop	28	4.0	Newport
334	Laura Joy	J. Gilmartin	Sloop	21	2.0	Bayliner
335	Colleen	F. Horn	Sloop	27	2.7	Irwin
337	Dawn Treader	R. Schultz	Sloop	35	3.9	Pearson
339	Tacktics	J. Trihy	Sloop	25	2.3	O'Day
344	Strawberry Fields	E. Sabbeth	Ketch	31	3.9	Mariner
345	Therapy	B.L. Cohn	Sloop	27	4.0	Catalina
346	Sunriser	H. Smith	Sloop	22.5	2.0	Tanzer
350	Ganymede	R. Pressler	Sloop	26	3.0	Westerly
353	Sea Wish	C. Herrforth	Sloop	28	3.0	Irwin
355	Cut Up	F. Feldman	Sloop	28	4.0	Triton
356	Judi	R. Van Tassel	Cutter	30	3.3	Grampian
358	Windsong	A. Champagne	Sloop	27	3.4	Tartan
360	Wild Blue II	A. Mulle	Ketch	30	4.0	Allied
361	Lynoro	N. Lampe	Sloop	30	4.0	Newport
363	Sunshine	S. Shappell	Sloop	24	2.5	Paceship
365	Eventide	A. Hack	Yawl	33		Seafarer
368	Phragmite	C. Frederick	Cat	18	1.6	Sanderling
370	Allegro II	J. Palmaro	Sloop	37	5.8	Knutson
371	Horizons	E. Schecker	Yawl	35	3.9	Bristol
372	Perseverance	J. D'Aleo	Sloop	23	2.0	O'Day
373	Y Knot	R. Degenhardt	Sloop	27.8	2.10	Lancer
375	Wherewolf	J. Wolf	Sloop	25	2.3	O'Day
377	Land-S-Cape	R. Hyvonen	Sloop	24.9	3.5	Corsair
381	Full House	P. McGinnis	Sloop	25	2.4	O'Day
382	Don Quixote	C. Sagarese	Sloop	28	4.0	Newport
383	Xanadu	P. Colombo	Sloop	34		Seafarer
388	Quadrant	H. Langley	Sloop	22	2.0	Herman 20
395	J'aime	M. Goodman	Sloop	25.9	2.7	Seafarer
401	Puma III	J. McCormick	Sloop	30	5.6	Westphal
402	Medusa	R. Horowitz	Sloop	27	3.3	Hunter
403	Loki	D. Gardner	Sloop	28	3.0	Irwin
404	Greit	J. Van Vliet	Sloop	25	3.0	Cape Dory
405	Charisma	S. Penny	Sloop	30	4.7	Newport
413	Karma	J. Wiehl	Sloop	35	3.9	Pearson
416	Troubadour	M. Portnoy	Sloop	38	3.9	Morgan
417	Sark	A. Koller	Ketch	35	4.0	Dickerson

**SOUTH BAY CRUISING CLUB FLEET —  
SAILING AUXILIARIES (Cont'd.)**

<u>No.</u>	<u>Yacht</u>	<u>Owner</u>	<u>Rig</u>	<u>LOA</u>	<u>Draft</u>	<u>Model</u>
418	Roundtripp III	D. Browne	Sloop	25.9	2.7	Seafarer
419	Char-Lyn	C. Parker	Sloop	27	3.4	Watkins
420	Gypsy Rose	C. Serra	Sloop	32	3.6	Bristol
421	Godspeed II	E. Neale, Jr.	Sloop	27	3.4	Tartan
422	Jimel	J. Heacock	Sloop	24	2.8	Yankee Dolphin
423	Sea Dream	W. Dunleavy	Sloop	28	4.2	Newport
425	Serendipity	J. Pagliare	Sloop	30	3.6	O'Day
427	Shaw-nise	W. Tauby	Sloop	25	3.0	Cape Dory
429	Tangerine	P. Heim	Sloop	25	2.3	O'Day
430	Lena	D. Stephani	Sloop	27	3.4	Tartan
433	LaPaix II	D. Boyd	Ketch	33	3.7	Cheoy Lee
435	Tradition	J. Brown	Sloop	23	2.9	Aquarius
437	Blithe Spirit	P. Knott	Sloop	26	3.8	Pearson
442	Wilde Thyme	B. Spivack	Sloop	27	3.4	Tartan
443	Whisper	R. Sherwood	Sloop	29.9	3.6	Bristol
444	Windhover	B. Kallman	Sloop	24	2.4	Carter
447	Bay Fox	D. Maud	Cutter	32	3.9	Bayfield
449	Bee-Jay	W. John	Sloop	26	3.0	Grampian
450	Shorebird	T. Madigan	Sloop	26	4.0	Pearson
452	Kariana	D. Krug	Sloop	27	3.3	Hunter
457	Fairwind	R. Schultz	Sloop	35	3.9	Pearson
459	Forager	P. Kramer	Yawl	35	3.8	Pearson
460	Phase Three	E. Hettinger	Sloop	28	3.10	Sabre
463	Euphoria	P. Aries	Sloop	28.5	3.0	Irwin
464	Reliance	D. Ketcham	Cutter	32	5.0	West sail
466	Shelley	I. Herman	Sloop	28	4.0	Triton
468	Jolly Jack	J. Hollis	Sloop	26	3.0	Snapdragon
469	Arctic Tern	C. Harris	Sloop	28	3.0	Irwin
482	Coppelia	J. Steinert	Sloop	26	4.0	Pearson
483	Windsong	R. Wangner	Sloop	27	2.6	Buccaneer
496	Golden Flyer	M. Kuzenko	Sloop	26	2.3	Essex
515	Myriah	R. Reimer	Sloop	32	3.6	Endeavour
521	KCB	C. Becker	Sloop	25	2.4	O'Day
528	Chuckle	R. Folks	Sloop	19.6	2.9	Sail Star
530	Spindrift	R. Lund	Sloop	26	2.3	Essex
532	Heather	D. Davies	Sloop	27	3.4	Tartan
535	Nugget	M. Stott	Sloop	27	4.3	Newport
540	Snoflake	K. Dahl	Sloop	24	4.0	C & C
544	Proteus	H. Freudenthal	Schooner	32	2.5	Herman
548	Starward	J. Moore	Yawl	40	4.3	Block Island
549	Exeter	T. McCarthy	Sloop	27	3.4	Tartan
555	Renarde	W.M. Aubin	Sloop	33	3.6	Swiftsure
558	Gone With The Wind	J. Schneider	Sloop	22	3.5	Sailstar
567	Shawn B II	J. Gunther	Sloop	30	3.6	Bristol
571	Bora	V. Radeka	Sloop	22	2.3	Kestrel
586	Partenope	L. Parillo	Sloop	24	4.0	C & C
587	Fantasia	V. Desimone	Yawl	34.9	3.9	Bristol
589	Compulsion	B. Russo	Sloop	32	3.6	Endeavor

**SOUTH BAY CRUISING CLUB FLEET —  
SAILING AUXILIARIES (Cont'd.)**

<u>No.</u>	<u>Yacht</u>	<u>Owner</u>	<u>Rig</u>	<u>LOA</u>	<u>Draft</u>	<u>Model</u>
619	Sunchaser	J. Schnell	Sloop	28	3.0	Irwin
622	Esoterica	A. Mielenhausen	Sloop	24	4.0	J-24
624	Tessa	J. Shea	Sloop	24	3.0	Seafarer
625	Honyak	J. Layton	Sloop	30	4.2	C & C
631	Tizona	A. Tonkiss	Sloop	27	3.4	Tartan
648	Flying Cloud	E. Kissenberth	Sloop	25	3.5	Bristol
660	Nellie Bly	P. Linker	Sloop	26	2.6	Bombay Express
665	Bandersnatch	E. Miller	Sloop	28	4.0	Triton
666	Dulcinea	J. Rosen	Sloop	30	3.6	Wanderer
667	Aurora	B. Horwitz	Sloop	30	3.6	Wanderer
668	Sanderling	R. Nehring	Sloop	33	3.6	Swiftsure
669	Kittiwake	R. Olsen	Sloop	30	4.0	Hunter
678	Caprice	J. Geraghty	Ketch	41	4.2	Morgan
687	Daddy's Toy	A. Fuchs	Sloop	24	3.6	Bristol
689	C-Bob	R. Coleman	Sloop	23	3.5	Tanzer
701	Dotty Ann	R. Benedict	Sloop	26	3.0	Grampian
702	Figures 111	W. Ceilly	Cutter	31	3.2	Sumnercraft
705	Zephyr	A. Feldman	Sloop	29.9	3.6	Bristol
708	Kalaki	R. Belfield	Sloop	23	2.3	Seafarer
710	Amy Gail II	E. Raskin	Sloop	26	3.0	Grampian
712	Kelmscott Chaucer	R. Schapiro	Sloop	27	4.0	Catalina
718	Draco	F. Fitzpatrick	Cutter	35	5.0	Jason
720	Amigo	R. Lynn	Sloop	29	2.1	Tylercraft
724	Evening Star	R.T. David	Schooner	42	4.6	Barnes
725	Windance	R. Brink	Sloop	27	4.3	Newport
732	Busman's Holiday	S. Brice	Sloop	30	3.5	O'Day
739	Cherrio	J. McKeen	Sloop	30	3.5	Morgan
742	Friendly Persuasion	T. Schwarting	Sloop	30	4.0	Newport
773	Times Square	L. Cyr	Sloop	33	3.10	Morgan O.I.
774	Raggedy Ann	D..Cantor	Sloop	30		Iroquois Mk II
776	Tachyon	D. Cameron	Sloop	29.9	3.6	Bristol
777	Just-Us	P. Ades	Sloop	38	3.6	Morgan
781	De Ja Vo	F. LaMorell	Sloop	28	3.0	Irwin
787	Relyc	B. Bernstein	Sloop	26	2.7	Paceship
791	Joie de Vivre	S. Groffman	Sloop	27	3.3	Hunter
796	Capriole	J. Stammnitz	Sloop	30	3.6	Bristol
799	Misty	R. Thompson	Sloop	30	3.11	Newport
802	Sea Reed	R. Reed	Sloop	34	3.3	Morgan
804	Ni-Ro	L. Lundegard	Sloop	22	1.8	Catalina
808	Sur Mer	W. Dobbelaer	Sloop	28	3.0	Morgan
813	Aerie	J. Grover, Jr.	Sloop	30	3.6	Morgan
818	Jacqueline II	R. Forman, Jr.	Sloop	38	3.8	Morgan
822	Sunshine	V. Kind	Sloop	25	3.8	C & C
830	Daisey	C. Lupe	Sloop	24	4.0	C & C
862	Happy Sneezy & Doc	C. Locke	Sloop	22	1.5	Continental
888	Liebchen	W. Muchmore	Sloop	27	3.0	Morgan
889	Avanti	R. Marino	Sloop	27	4.0	Catalina
890	Charlotte J.	P. Turner	Sloop	27	4.0	Catalina

## SOUTH BAY CRUISING CLUB FLEET — SAILING AUXILIARIES (Cont'd.)

<u>No.</u>	<u>Yacht</u>	<u>Owner</u>	<u>Rig</u>	<u>LOA</u>	<u>Draft</u>	<u>Model</u>
901	Mouette	A. Reinhard	Sloop	33	3.5	Swiftsure
903	Ms. Adventure	B. Blossom	Sloop	19	2.8	Cape Dory
913	Atlas	A. Brant	Sloop	22	3.2	Columbia
917	Pisces II	R. Schwartz	Sloop	34	3.9	Tartan
918	Sigrid	J. Pallotta	Sloop	37	4.3	Tartan
930	Curragh	T. McClone	Sloop	27	3.4	Tartan
955	Summer Breeze	R. Piechnik	Sloop	25	2.8	Catalina
983	Loon	L. Orr, Jr.	Sloop	33	3.6	Swiftsure
1020	Aloha Kai	A. Gschwindt	Cutter	33	3.0	Cox Trimaran
1101	Rena T	A. Falik	Sloop	25	2.5	Westerly Windrush
1109	Sea Fox	C. Kerstin	Sloop	24		Seafarer
1121	Ailanthus	W. Grauer	Sloop	26	4.0	Pearson
1124	South Bay Princess	M. Coller	Sloop	25	2.8	Catalina
1125	Wild Rover	B. Brownyard	Sloop	27	3.9	Erickson
1128	Juniper	J. Istel	Sloop	35	3.8	Pearson
1134	Ceyx	S. Culviner	Sloop	28	3.0	Irwin
1181	Peregrine	R. Weinstein	Sloop	25	3.11	Hunter
1184	Rainmaker	H. Spatenga	Yawl	38	4.3	Tripp Custom
1195	Lucky Bark II	T. O'Connell	Sloop	21.6	1.8	Catalina
1258	Chiripa	R. de Murias	Sloop	35	3.9	Seabreeze
1276	Chaconne	R. Pawloski	Sloop	27	3.9	Ericson
1279	Running Free	F. Sagarese	Sloop	26	4.0	C & C
1403	Firefly	T. David	Sloop	22	1.11	O'Day
1453	Tara	W. Warner	Sloop	26	4.0	Pearson
1457	Li'l Cher	R. Davison	Sloop	21	4.5	Irwin
1530	Nimark	D. King	Sloop	28	3.0	Irwin
1699	Sail "R"s	B. Rottkamp	Sloop	22	1.8	Catalina
1714	Wind Call	E. Dew, Jr.	Sloop	34.3	4.0	Irwin
1759	Aw-Gust	B. August	Sloop	25		Coronado
1762	Perrezozo	S. Shadoff	Sloop	25	2.8	Catalina
1770	Nephele	R. Goodwin	Sloop	30	3.6	Wanderer
1776	Jubilation	E. Petroske	Sloop	34	3.8	Seafarer
1874	Flicka	H. Heiduck	Sloop	27	3.10	Albin
2001	Alpha	J. Morris	Ketch	38	2.5	Trimaran
2020	Golden Days	M. Silbert	Sloop	35	4.0	Bristol
2101	Synergy	D. Knife	Sloop	30	1.5	Catamaran
2156	Maryanne	R.O. Smith	Sloop	35	3.9	Pearson
2180	Cygnus	T. Gotard	Sloop	28	3.0	Irwin
2191	Haf "N" Haf	J. Robb	Sloop	26	4.0	Clipper
2263	Dova II	D. Murphy	Sloop	25	2.3	O'Day
2377	Kandy Bar	W. Dwyer	Sloop	31	3.3	Corvette
2378	Joanie Girl	G. Nolan	Sloop	25	3.11	Hunter
2404	Yellowbird	A. Baroni	Sloop	40	4.5	C & C
2420	Whisper	D. Brown	Sloop	30	3.5	Morgan
2483	Aisha	D. Aiken	Sloop	30	3.5	Morgan
2484	Sinn Fein	E. Murray	Sloop	39	4.8	Pearson
2521	Allegro	A. Golfman	Sloop	30	3.6	Wanderer

**SOUTH BAY CRUISING CLUB FLEET —  
SAILING AUXILIARIES (Cont'd.)**

<u>No.</u>	<u>Yacht</u>	<u>Owner</u>	<u>Rig</u>	<u>LOA</u>	<u>Draft</u>	<u>Model</u>
2627	Duchess	P. Wainwright	Sloop	30	3.6	Wanderer
2700	Destiny	J. French	Yawl	35	3.9	Seabreeze
2701	Blue Moon	F. Zangle	Sloop	31	3.3	Corvette
2712	Carolina	A. Davies	Sloop	30	3.6	Wanderer
2790	Thursday's Child	F. Taussig	Ketch	51	4.5	S&S Motor Sailer
2808	Gliding Gull	D. Van Nostrand	Sloop	31	3.3	C & C
2823	Free Flight	J. Rieger	Sloop	35	3.9	Pearson
2859	Deirdre-L	H. McTeague	Yawl	43	6.0	Pearson
2885	Tuxn	G. Boulukos	Sloop	40	4.7	Columbia
2890	Snow Goose	J. Glynn	Sloop	31	3.3	Corvette
3131	Cygnets	R. Finta	Sloop	27	3.4	Tartan
3419	Elusive	L. Pollen	Sloop	19		Mariner
3454	Patience	J. Koster	Sloop	27	3.0	Catalina
3663	West Wind	L. Deutsch	Sloop	31	3.3	Corvette
3765	Cheers	S. Driscoll	Sloop	34	3.3	Morgan
3813	Courageous	F. Wiedersum	Sloop	34	4.0	C & C
3924	Loralee	L. Fring	Sloop	27	3.5	Catalina
4242	Easy Jigs	E. Johnson	Sloop	35	3.9	Pearson
4271	Chanson	G. Baldwin, Jr.	Sloop	30	3.5	Morgan
4358	Wandelaar	J. Schwartz	Sloop	35	3.8	Pearson
4495	Eramia	W. Kachel	Sloop	32	3.5	Irwin
4744	Mandalay	J. Saxe	Sloop	30	3.6	Wanderer
4817	Challenger	H. Johansen	Sloop	26	4.0	Pearson
4882	Le Nid de Courbeau	P. Patin	Sloop	27	3.6	Tartan
5021	Impulse	H. Kenny	Sloop	21	3.6	Catalina
5174	Manatuck	E. Reardon	Sloop	44	4.5	Mercer 44
5763	Caliente	J. Becker	Sloop	21	1.8	Catalina
10054	Dreamer	B. Sweeney	Sloop	28	3.0	Morgan
10207	Tranquilizer	R.M. Daytz	Sloop	38	3.8	Morgan
10521	Sea Plus	D. Mills	Yawl	35	3.7	Pearson
10551	Mischief	K. Westhoff	Sloop	24	2.8	Yankee Dolphin
11588	Thunder Cloud	J. Classen	Sloop	27	4.6	C & C
12776	Bacchus	G. Bundy	Sloop	22	3.8	Coronado
13178	Kim	R. Homestead	Sloop	23	3.6	Ranger
14347	Massochist	W. Ciocys	Sloop	24		Carlson Custom
14867	Blaze	R. LaBella	Sloop	25	3.8	C & C
20126	Odin	W. Schmahl	Sloop	33	4.8	C & C
20233	Freewind	R. Novak	Sloop	33	4.5	C & C
20261	Valkyrie	H. Norwark	Sloop	28	4.6	Newport
20377	Ragamuffin	V. Ganzi	Sloop	20	3.3	Newport
21036	Mystique	D. Rubin	Sloop	37	4.2	Tartan
21674	Solitude	R. Peterson	Sloop	35	3.9	Pearson
22101	Warlock	S. DeLise	Sloop	36	4.5	C & C
33047	Joannie P.	T. Licari	Sloop	24	4.0	C & C

## MEMBER YACHTS ALPHABETICALLY (Including Power Vessels)

<u>Yacht</u>	<u>No.</u>	<u>Radio</u>	<u>Owner</u>	<u>Yacht</u>	<u>No.</u>	<u>Radio</u>	<u>Owner</u>
Abnaki	151	VHF	N. Bickford	Caliente	5763	—	J. Becker
Aeolus III	251	VHF	P. Dauzickas	Caprice	678	VHF	J. Geraghty
Aeolus	297	—	R. Graham	Capriole	796	VHF	J. Stammnitz
Aerie	813	VHF	J. Grover, Jr.	Carolina	2712	VHF	A. Davies
Ailanthus	1121	—	W. Grauer	Cayenne	303	VHF	W.M. Teta
Aisha	2483	VHF	D. Aiken	C-Bob	689	—	R. Coleman
Allegro	2521	VHF	A. Golfman	Ceyx	1134	VHF	S. Culviner
Allegro II	370	VHF	J. Palmaro	Chaconne	1276	VHF	R. Pawloski
Aloha Kai	1020	VHF	A. Gschwind	Challenger	4817	—	H. Johansen
Alpha	2001	VHF	J. Morris	Chanson	4271	VHF	G. Baldwin
Amigo	720	VHF	R. Lynn	Chantey	133	—	M. Barton
Amy Gail II	710	VHF	E. Raskin	Charisma	77	—	R. Parker
Anache III	121	—	P. Savoca	Charisma	157	VHF	L. Werner
Antigua	73	VHF	F. Gauch	Charisma	405	—	S. Penny
Apocalypse	312	—	W. Johnston	Char-Lyn	419	—	C. Parker
Arctic Tern	469	VHF	C. Harris	Charlotte J.	890	—	P. Turner
Ariel	60	VHF	C. Bernichon	Charron's Ferry	106	—	R.Z. Brown
Artifact	140	—	F. Becker	Chasseur	264	—	E. Pfrunder
At Last	322	—	C. Hartzell	Cheers	3765	VHF	S. Driscoll
Atlast	913	—	A. Brant	Cherrio	739	—	J. McKeen
Aurora	667	—	B. Horwitz	Chiripa	1258	—	R. deMurias
Avanti	889	—	R. Marino	Chuckle	528	—	R. Folks
Aw-Gust	1759	—	B. August	Cirrus	98	—	H. Glover
Awiki II	170	VHF	R. Wendt	Climax	1	—	B. Max
Bacchus	12776	—	G. Bundy	Colleen	335	—	F. Horn
Bandersnatch	665	—	E. Miller	Compulsion	589	VHF	B. Russo
Banshee	333	—	P. Kelly	Coppelia	482	VHF	J. Steinert
Barcarolle	203	VHF	M. Goldsmith	Courageous	3813	VHF	F. Wiedersum
Batyam	282	VHF	M. Heller	Curlew	353	—	C. Herrforth
Bay Fox	447	VHF	D. Maud	Curragh	930	VHF	T. McClone
B & B	180	VHF	R. Hollis	Cut-Up	355	VHF	F. Feldman
Bee-Jay	449	VHF	W. John	Cygnat	3131	VHF	R. Finta
Betty	87	—	P. Ketcham	Cygnus	2180	—	T. Gotard
Black Petrel	24	VHF	R. Ramsdell	Daddy's Toy	687	—	A. Fuchs
Blanche L. III	273	—	A. Schnapp	Daisey	830	VHF	C. Lupo
Blaze	14867	VHF	R. LaBella	Dawn Treader	337	VHF	R. Schultz
Blithe Spirit	347	—	P. Knott	Decatur	64	VHF	R. Schafer
Blue Moon	221	VHF	A. Vaclavik	Deirdre-L	2859	VHF	H. McTeague
Blue Moon	2701	VHF	F. Zangle	De Ja Vu	781	VHF	F. LaMorell
Blue Norther	104	VHF	R. Lampe	Deliana	174	—	W. Symons
Bones Apart II	211	VHF	M. Rein	Destiny	2700	VHF	J. French
Bora	571	—	V. Radeka	Dialectics	131	—	S. Jonas
Buccaneer	78	—	A. Pearson	Diana	109	VHF	N. Spiess
Busman's				Don Quixote	382	—	C. Sagarese
Holiday	732	—	S. Brice	Doppalong	90	—	J. Kraker
Butterfly	238	—	J. Alberi				

MEMBER YACHTS ALPHABETICALLY  
(Continued)

<u>Yacht</u>	<u>No.</u>	<u>Radio</u>	<u>Owner</u>	<u>Yacht</u>	<u>No.</u>	<u>Radio</u>	<u>Owner</u>
Dotty Ann	701	—	R. Benedict	Golden Flyer	496	—	M. Kuzenko
Dova II	2263	—	D. Murphy	Gone With The Wind	558	—	J. Schneider
Draco	718	VHF	F. Fitzpatrick	Good Tern	301	VHF	I. Buxton
Dreamer	10054	—	B. Sweeney	Good Wind	232	VHF	H. Goodwin
Dulcinea	666	VHF	J. Rosen	Gray Ghost	227	—	W. Cook, Jr.
Easy Jigs	4242	VHF	E. Johnson	Griet	404	—	J. Van Vliet
Ebb-Tide	112	—	J. Tarantino	Gypsy Rose	420	VHF	C. Serra
Ellen	281	VHF	J. McInerney	Haf 'N Haf	2191	—	J. Robb
Elusive	3419	—	L. Pollen	Happiness Is	243	—	N. Heckel
Endless Summer	123	VHF	G. Walsh	Happy, Sneazy & Doc	862	—	C. Locke
Eramia	4495	VHF	W. Kachel	Harrier	260	—	E.A. Brooks
Esoterica	622	VHF	A. Mielenhausen	Heather	532	VHF	D. Davies
Euphoria	463	—	P. Aries	Hephzibah	256	VHF	O. Davison
Evening Star	724	VHF	R.T. David	H.M.S. Bel Ami	136	VHF	H. Schuster
Eventide	365	—	A. Hack	Hollandia	110	—	J.A. Pless
Exeter	549	VHF	T. McCarthy	Honyak	625	—	J. Layton
Fairwind	457	—	R. Schultz	Horizon	107	—	F. Atwood
Falcon	242	—	A. Heckel	Horizons	371	VHF	E. Schecker
Fantasia	587	VHF	V. Desimone	Illusion	147	—	B. Flegenheimer
Feather	292	—	T.E. Dauch	Impulse	5021	—	H. Kenny
Figures 111	702	VHF	W. Ceilly	Independence	274	VHF	E. Turner
Filibuster	12	VHF	W. Brayshaw	Integrity	215	—	J. Perry
Firefly	1403	—	T. David	Isabel	214	—	B. Benith
First Edition	146	VHF	T. Poulos	Ishtar	22	VHF	T. Henry
Flicka	1874	—	H. Heiduck	Jackie M.	226	VHF	F. Merklin
Flighty Miss	145	VHF	H. Colleran	Jacqueline II	808	—	R. Forman
Flying Cloud	648	VHF	E. Kissenberth	J'aime	395	—	M. Goodman
Forager	459	VHF	P. Kramer	Jan Maat	153	VHF	V. Sailor
Force 10	66	VHF	R. Wissman	Jeanie	102	—	T. Hangarter
Free Flight	2823	VHF	J. Rieger	Jimel	422	—	J. Heacock
Freewind	20233	VHF	R. Novak	Joanie Girl	2378	—	G. Nolan
Friendly Persuasion	742	VHF	T. Schwarting	Joannie P	33047	—	T. Licari
Full House	381	—	P. McGinnis	Joie de Vivre	791	—	S. Groffman
Ganymede	350	VHF	R. Pressler	Jolly Jack	468	VHF	J. Hollis
Gem	280	—	M. Griffiths	Jubilation	1776	VHF	E. Petroske
Gisela R	218	—	A.P. Schafer	Judi	356	VHF	R. Van Tassel
'Glas Menagerie	320	—	B. Kennedy	Juniper	1128	VHF	J. Istel
Glass Slipper	105	—	P. Reiser	Just-Us	777	VHF	P. Ades
Gliding Gull	2808	—	D. Van Nostrand	Kalaki	708	—	R. Belfield
Godspeed II	421	VHF	E. Neale, Jr.	Kandy Bar	2377	VHF	W. Dwyer
Golden Days	40	VHF	J. Woodward				
Golden Days	2020	VHF	M. Silbert				

## MEMBER YACHTS ALPHABETICALLY (Continued)

<u>Yacht</u>	<u>No.</u>	<u>Radio</u>	<u>Owner</u>	<u>Yacht</u>	<u>No.</u>	<u>Radio</u>	<u>Owner</u>
Kariana	452	VHF	D. Krug	Miramar	244	—	J. Magovern
Karma	413	VHF	J. Wiehl	Mischief	10551	—	K. Westhoff
KCB	521	—	C. Becker	Misty	799	VHF	R. Thompson
Kelmscott				Misty II	149	VHF	H. Holler
Chaucer	712	VHF	R. Schapiro	Misty	324	VHF	C. Hollenbach
Kim	13178	—	R. Homestead	Mouette	901	—	A. Reinhard
Kismet	199	—	J. Berdolt	Ms. Adventure	903	—	B. Blossom
Kittiwake	669	VHF	R. Olsen	Myriah	515	VHF	R. Reimer
				Mystique	21036	VHF	D. Rubin
Lady Lee	254	—	W. Cosgrove				
Lady Lou V	53	—	J. Beinert	Nordlys	93	VHF	S.T. Smith
Lady Lynn	99	—	K. Kondor	Nova	192	VHF	J. Lacy
Lady Lynn II	139	VHF	J. Layden	Nellie Bly	660	—	P. Linker
Land-S-Cape	377	—	R. Hyvonen	Nephele	1770	VHF	R. Goodwin
La Paix II	433	VHF	D. Boyd	Nimark	1530	—	D. King
Laura Joy	334	VHF	J. Gilmartin	Ni-Ro	804	—	L. Lundegard
Lena	430	VHF	D. Stephani	Nor'Easter	142	—	R. Boyd
Le Nid				Nugget	535	—	M. Stott
De Corbeau	4882	—	P. Patin				
Liebchen	888	VHF	W. Muchmore	Odin	20126	—	W. Schmahl
Li'l Cher	1457	—	R. Davison	Orca	156	VHF	B. Rosenberg
Loki	403	—	D. Gardner	Oysterman	117	—	W. Menger
Loon	983	—	L. Orr, Jr.				
Loralee	3924	—	L. Fring	Panacea	271	VHF	S. Herman
Lorna Doone	120	—	R. VanNostrand	Partenope	586	—	L. Parillo
Lucky Bark II	1195	—	T. O'Connell	Patience	3454	—	J. Koster
Lynn W.	128	—	R. Wittman	Patty Wagon	89	—	D. Wood
Lynoro	361	—	N. Lampe	Peregrine	1181	VHF	R. Weinstein
				Periwinkle	16	—	J. Hack
Magic	118	—	D. McClure	Perrezozo	1762	—	S. Shadoff
Magic	200	—	R. Sheppard	Perseverance	372	—	J. D'Aleo
Mallard II	165	—	E. Kennelly	Phase Three	460	VHF	E. Hettinger
Mañana II	23	—	F. Holwell	Phragmite	368	—	C. Frederick
Manatuck	5174	VHF	E. Reardon	Pisces II	917	—	R. Schwartz
Mandalay	4744	VHF	J. Saxe	Polly Bee	111	VHF	J. Ryan
Mariah	265	VHF	D. Reichel	Pony Tail	155	—	J. Regan
Marigold	315	—	C. Klarmann	Pooka	309	—	M. Fishman
Marshmallow				Privateer	179	—	P. Horbert
World	141	VHF	T. Bolger	Proteus	544	—	H. Freudenthal
Maryanne	2156	VHF	R.O. Smith	Psyche IV	295	—	J. Chasas
Mary Lee	319	VHF	L. Moreland	Puffin	212	—	G. Wrage
Masochist	14347	—	W. Ciocys	Puma III	401	VHF	J. McCormick
Medusa	402	—	R. Horowitz				
Memory	68	—	R. Heess	Quadrant	388	VHF	H. Langley
Merri Mac	300	—	B. MacGill	Queen E	266	—	J. Reilly
Merry Ann	220	—	W. Cook	Quintessence	288	—	N. Robertson

MEMBER YACHTS ALPHABETICALLY  
(Continued)

<u>Yacht</u>	<u>No.</u>	<u>Radio</u>	<u>Owner</u>	<u>Yacht</u>	<u>No.</u>	<u>Radio</u>	<u>Owner</u>
Ragamuffin	20377	—	V. Ganzi	Slim	62	—	H. Hamstra
Raggedy Ann	774	VHF	D. Cantor	Sly Fox	150	VHF	F. Gillespie
Rainmaker	1184	—	H. Spatenga	Snoflake	540	—	K. Dahl
Rakama II	237	—	R. Scharr	Snow Goose	2890	—	J. Glynn
Red Baron	219	VHF	E. Kaiser	Solitude	21674	VHF	R. Peterson
Rehbock	263	VHF	J.H. Bogan	South Bay Princess	1124	VHF	M. Collier
Reliance	108	—	R. Glinick	Sparkling Waters	46	—	R. Pasch
Reliance	464	VHF	D. Ketcham	Spindrift	530	—	R. Lund
RELYC	787	VHF	B. Bernstein	Starduster	294	VHF	E. Nonnon
Renarde	555	—	W.M. Aubin	Starward	548	—	J. Moore
Rena-T	1101	—	A. Falik	Staryker	116	—	D. McPherson
Resistance	176	VHF	R. Dunlop	Strawberry Fields	344	VHF	E. Sabbeth
Resolute	161	VHF	R. Snyder	Sumaka IV	277	—	F. Eggerstedt
Respite	114	VHF	C. Stearns	Summer Breeze	955	VHF	R. Piechnik
Reverie	234	VHF	W. Cummins	Summer Wind	66	VHF	R. Wissman
Roundtripp III	418	—	D. Browne	Sunchaser	619	VHF	J. Schnell
Running Free	1279	VHF	F. Sagarese	Sundowner	159	—	M. Smith
Ruth II	113	—	H. Gottwald	Sunriser	346	—	H. Smith
Sagwa	314	—	D. Bernard	Sunshine	363	VHF	S. Shappell
Sail "R"s	1699	—	B. Rottkamp	Sunshine	822	—	V. Kind
Salteen	304	—	J. Palmer	Sur Mer	808	VHF	W. Dobbelaer
Salty C's	190	VHF	J. Canning	Synergy	2101	—	D. Knife
Sanderling	668	VHF	R. Nehring	Tachyon	776	—	D. Cameron
Sara Jane	119	VHF	N. Berhannan	Tactics	339	—	J. Trihy
Sark	417	—	A. Koller	Tammy Norie	164	—	J. Goodale
Sea Chantey	184	VHF	I. Polk	Tangerine	429	—	P. Heim
Sea Dream	423	VHF	W. Dunleavy	Tara	1453	—	W. Warner
Sea Fever	299	VHF	E. Henkel	Teezim Too	10	VHF	F. Zimmerman
Sea Fox	1109	VHF	C. Kerstin	Tessa	624	VHF	J. Shea
Sea Hawk	154	—	R. Thomson	Therapy	345	—	B. Cohn
Sea Jay	35	VHF	J. Wragge	Thunder Cloud	11588	VHF	J. Classen
Sea Plus	10521	VHF	D. Mills	Thursday's Child	2790	VHF	F. Taussig
Sea Reed	802	VHF	R. Reed	Times Square	773	VHF	L. Cyr
Sea Sprite	331	VHF	A. Wieda	Tizona	631	—	A. Tonkiss
Sea Wish	353	VHF	C. Herrforth	Tradition	435	—	J. Brown
Serendipity	425	VHF	J. Pagliaro	Tranquilizer	10207	VHF	R.M. Daytz
Shamrock	172	VHF	T. Burke	Troubadour	416	VHF	M. Portnoy
Shawn B II	567	—	J. Gunther	Tuxn	2885	—	G. Boulukos
Shaw-nise	426	—	W. Tauby	Twilight	94	—	J. Titterington
Shelley	466	VHF	I. Herman	ULLr	230	—	M. Goldsmith
Shore Bird	450	VHF	T. Madigan	Utopia	222	VHF	D. Zimmer
Sigrid	918	VHF	J. Pallotta				
Sinn Fein	2484	VHF	E. Murray				
Skylark	45	—	W. Thayer				

## MEMBER YACHTS ALPHABETICALLY (Continued)

<u>Yacht</u>	<u>No.</u>	<u>Radio</u>	<u>Owner</u>	<u>Yacht</u>	<u>No.</u>	<u>Radio</u>	<u>Owner</u>
Valhalla	96	—	W. Kleisler	Wind Call	1714	VHF	E. Dew, Jr.
Valkyrie	148	—	E. Farrell	Windhover	247	—	W. Cerveny
Valkyrie	20261	VHF	H. Norwark	Windhover	444	—	B. Kallman
Vela II	182	—	A. Rising	Windrifter	241	VHF	R. Woodhull
Venus	276	VHF	D. Iurillo	Windrose	138	VHF	R. Saganic
Vi	125	VHF	A. Yaxis	Windsong	279	—	A. Bertapelle
Wandelaar	4358	—	J. Schwartz	Windsong	358	VHF	A. Champagne
Wanderlust	122	—	R. Holzmacher	Windsong	483	VHF	R. Wangner
Wanderlust III	313	—	R. Kumpf	Windquest	318	VHF	R. Stephens
Warlock	22101	—	S. DeLise	Xanadu	383	—	P. Colombo
West Wind	3663	VHF	L. Deutsch	Xanadu	166	VHF	E. Fischer
Wherewolf	375	VHF	J. Wolf	Yankee Doodle	86	—	H. Post
Whileaway	158	VHF	J. Gambino	Yellowbird	2404	VHF	A. Baroni
Whisper	443	—	R. Sherwood	Yellow Brick Road	253	VHF	B. Braverman
Whisper	2420	VHF	D. Brown	Y Knot	373	—	R. Degenhardt
Whistler	19	—	H. Tilden	Zephyr	705	VHF	A. Feldman
White Cloud	204	—	J. Cahill	No Name	145	—	J. Wirth
Wild Blue II	360	VHF	A. Mulle	No Name	169	—	W. Nielsen
Wild Rover	1125	VHF	B. Brownyard				
Wild Thyme	442	VHF	B. Spivack				
Windance	725	—	R. Brink				

### POWER VESSELS

Alice V	—	T. Underhill	Old Salt III	—	R. Carl	
Fang	VHF	H. Labenow	Old Squaw	—	D. Davison	
First Light	—	R. Stuhler	Pontus	VHF	R. Howell	
Isdon	—	A. Klesick	Ruddy Duck	VHF	R. Davison	
Island Woman	—	E. Seidenberg	South Wind	951	VHF	W. Konz
Lief The Lucky	—	R. Wills	Tamb	950	VHF	W. Bracco
Lovely Lady	VHF	J. Ross	Watersport	—	W. Thomas	
Morning Star	001	VHF	C. Stoye			

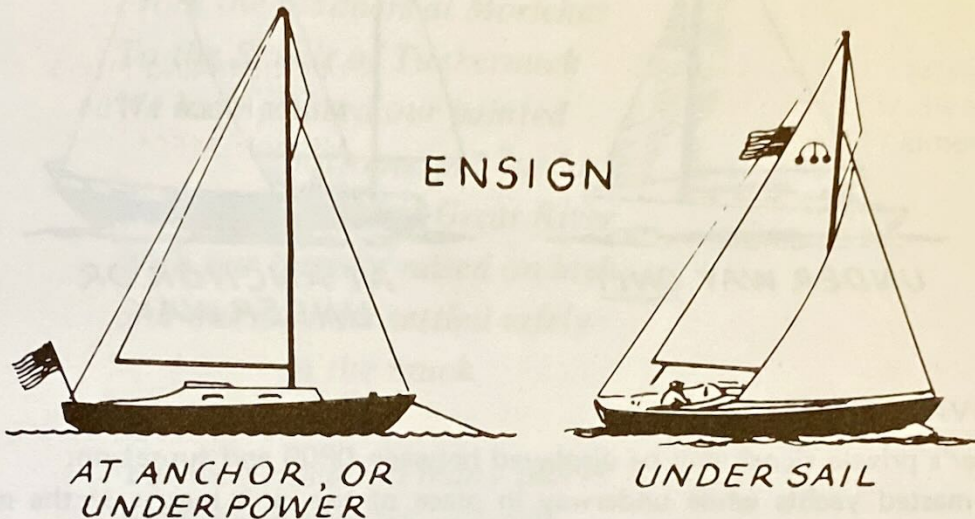
## MEMBERS' ZIP CODES

Amityville 11701	Lindenhurst 11757
Babylon 11702	Long Island City 11103
Baldwin 11510	Lynbrook 11563
Bayport 11705	Massapequa 11758
Bay Shore 11706	Mastic Beach 11951
Bellmore 11710	Merrick 11566
Bellport 11713	Miami, FL 33181
Berkeley Heights, NJ 07922	Middle Island 11953
Blue Point 11715	Miller Place 11764
Bohemia 11716	Mineola 11501
Brentwood 11717	New Rochelle 10804
Brightwaters 11718	New York City, Note Below
Brookhaven 11719	North Babylon 11703
Brookville 11545	Oakdale 11769
Callas, VA 22435	Old Bethpage 11804
Central Islip 11722	Patchogue 11772
Cliffside Park, NJ 07010	Peekskill 10566
Commack 11725	Plainview 11803
Deer Park 11729	Port Jefferson 11777
Dix Hills 11746	Richmond Hill 11418
Douglaston 11363	Rockville Centre 11570
East Islip 11730	Ronkonkoma 11779
East Patchogue 11772	St. Petersburg, FL 33705
East Rockaway 11518	San Diego, CA 92109
Englewood, NJ 07631	Sayville 11782
Farmingdale 11735	Seaford 11783
Flushing 11366	Selden 11784
Fort Lee, NJ 07024	Setauket 11733
Freeport 11520	Smithtown 11787
Ft. Salonga 11788	South Huntington 11747
Garden City 11530	St. James 11780
Glen Cove 11542	Stamford, CT 06903
Great Neck 11021	Stony Brook 11790
Great River 11739	Tierra Verde, FL 33631
Hauppauge 11787	Wantagh 11793
Hicksville 11801	West Babylon 11704
Hollis 11423	West Hempstead 11552
Huntington 11743	West Islip 11795
Island Park 11558	Weston, CT 06880
Islip 11751	Woodbury 11797
Keyport, NJ 07735	Woodmere 11598
Kings Point 11024	

**NOTE:** For Zip Codes in five city Boroughs, refer to telephone Yellow Page Directory for respective Borough.

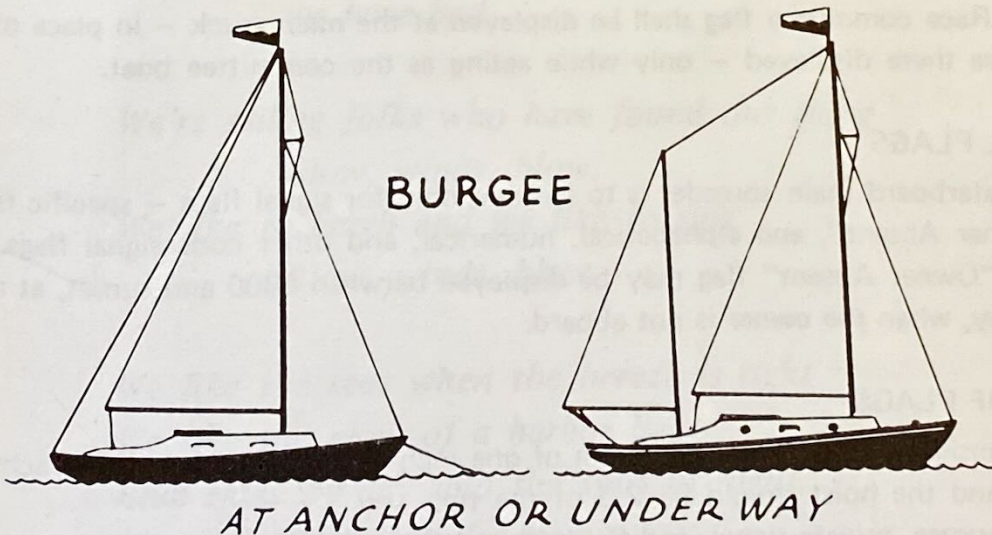
## FLAG ETIQUETTE

The correct display of flags, signals, and ensigns is one of the more obvious marks of a yachtsman. This inflexible code is steeped in the tradition of the sea and promotes uniformity in communication and identification between yachts. The complete flag etiquette of the N.A.Y.R.U. covers ten pages. We offer below a paraphrased version that covers the signals that are used daily on small or medium sized sailing yachts.



### THE ENSIGN

1. The ensign is displayed between 0800 and sunset only.
2. The ensign is displayed at anchor or under power along at a stern staff.
3. The ensign may be displayed under sail at the after peak of gaff-rigged yachts, otherwise 2/3 of the way up the leach of the aftermost sail.

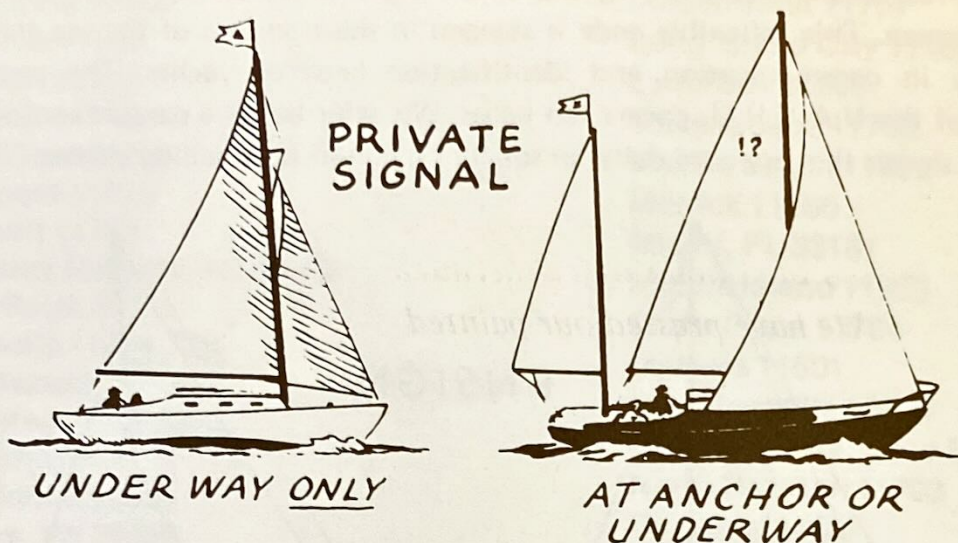


### THE BURGEE

The club burgee is displayed whenever the ensign is displayed, but may also be displayed separately, between 0800 and sunset, while at anchor or underway, on

1. The masthead of single-masted yachts
2. The forward masthead of two-masted yachts
3. NEVER at the spreader

## FLAG ETIQUETTE (Cont'd.)



### THE PRIVATE SIGNAL

The owner's private signal may be displayed between 0800 and sunset on:

1. Single-masted yachts while underway in place of the club burgee at the masthead.
2. Two-masted yachts at the after masthead, at anchor and underway.

### FLAG OFFICERS' FLAGS

A flag officer shall display his flag both day and night in place of and instead of his private signal on two-masted yachts or at the masthead of single-masted yachts.

### RACE COMMITTEE FLAG

The Race committee flag shall be displayed at the main truck — in place of the flag otherwise there displayed — only while acting as the committee boat.

### SIGNAL FLAGS

The starboard main spreader is to be used only for signal flags — specific flags, such as "Owner Absent", and alphabetical, numerical, and other code signal flags.

The "Owner Absent" flag may be displayed between 0800 and sunset, at anchor or underway, when the owner is not aboard.

### SIZES OF FLAGS

The ensign should have a minimum of one inch of fly for each foot of yacht's overall length, and the hoist should be 2/3 of the fly.

The burgee, private signal, and flag officers' flags should have a minimum of 1/2 inch of fly for each foot of height of the highest mast, and the hoist should be 2/3 of the fly.



In memory of those Club Members  
who during 1979  
sailed their last race,  
cruised their last cruise  
and now are with the Almighty,  
sailing in gentle winds,  
on calm seas, under clear skies.

FRED BRADDON

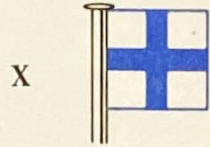
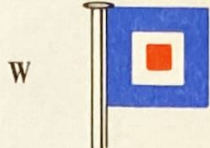
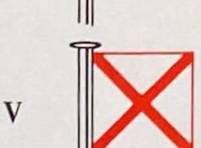
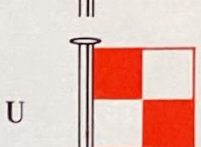
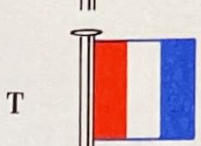
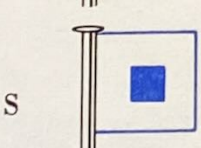
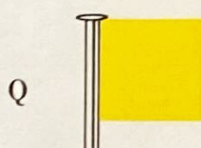
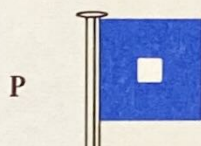
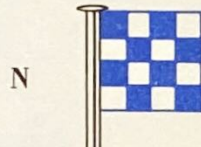
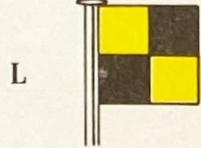
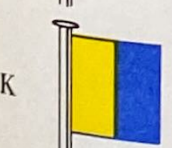
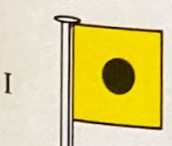
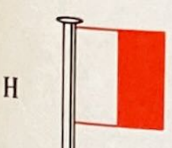
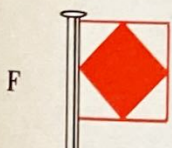
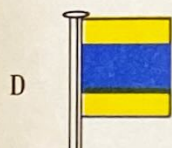
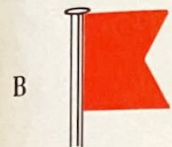
MATTHEW J. SLATTERY

HERVEY G. SMITH

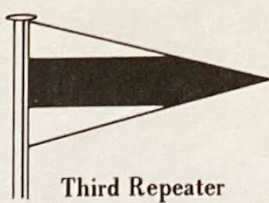
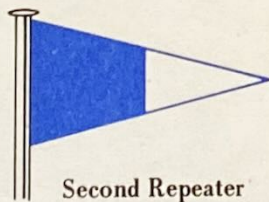
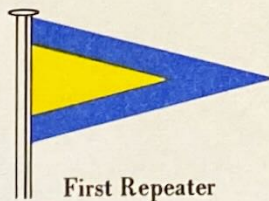
WILLIAM H. SYRETT, JR.

*Requiescat in Pace*

# INTERNATIONAL CODE FLAGS AND PENNANTS



## REPEATERS



## CODE AND ANSWERING PENNANT



## NUMERAL PENNANTS

